

# For Lease

Adjacent to BJ's  
Route 113  
Millsboro, DE 19966

Charles  
Rodriguez

302-674-3400

ccrod1@aol.com



46 South State Street  
Dover, Delaware 19901

302-674-3400

[www.randrcommercialrealty.com](http://www.randrcommercialrealty.com)



## Property Information

- ⇒ Join Sherwin Williams and Starbucks!
- ⇒ 1,100 - 2,898+/- SF Available
- ⇒ 3 Mile Daytime Population: 8,274
- ⇒ 3 Mile Avg. HH Income: \$62,897
- ⇒ 2015 AADT - 27,143
- ⇒ Tax Parcel: 2-33-05.00-115.00
- ⇒ Lease Price: \$28.00 psf NNN

All information contained herein is believed to be accurate, however was obtained from third parties and R & R Commercial Realty, Inc. does not warrant as to the accuracy submitted, subject to changes or modification without notice. Listing Broker represents the sellers interest.

# Retail Space For Lease

Adjacent to Lowes and BJ's, Route 113, Millsboro



R&R Commercial Realty ♦ 46 South State Street, Dover, DE 19901 ♦ 302-674-3400 ♦ [www.randrcommercialrealty.com](http://www.randrcommercialrealty.com)

All information contained herein is believed to be accurate, however was obtained from third parties and R & R Commercial Realty, Inc. does not warrant as to the accuracy submitted, subject to changes or modification without notice. Listing Broker represents the sellers interest.



# Retail Space For Lease

Adjacent to Lowes and BJ's, Route 113, Millsboro



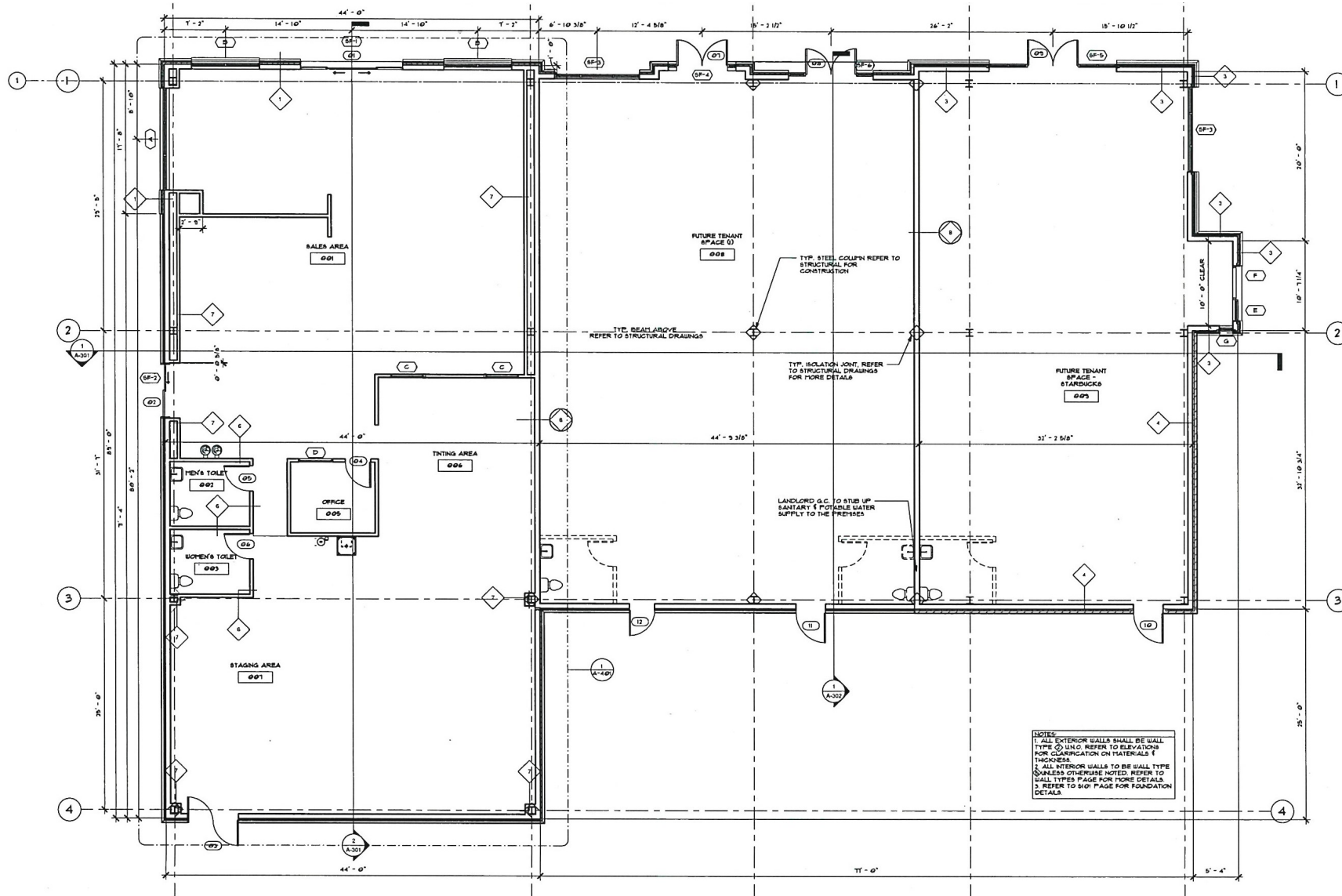
R&R Commercial Realty ♦ 46 South State Street, Dover, DE 19901 ♦ 302-674-3400 ♦ [www.randrcommercialrealty.com](http://www.randrcommercialrealty.com)

All information contained herein is believed to be accurate, however was obtained from third parties and R & R Commercial Realty, Inc. does not warrant as to the accuracy submitted, subject to changes or modification without notice. Listing Broker represents the sellers interest.



# Retail Space For Lease

Adjacent to Lowes and BJ's, Route 113, Millsboro



**FISHER ARCHITECTURE**  
Fisher Architecture, LLC  
1000 North DuPont Highway  
Millsboro, DE 19966  
(410) 691-1234  
FAX: (410) 691-1235  
www.fisherarch.com

**DUPONT PLAZA SHOPPING CENTER**  
2800E DUPONT BLVD.  
MILLSBORO, DE 19966

**SHEET INFO:**

**FLOOR PLAN - DUPONT PLAZA SHOPPING CENTER**

NO.	DATE	DESCRIPTION
1	01.20.2014	Issued for bidding and construction
2	01.14.2014	PERMITS
3	11.06.2013	1st General CIP Review
4	08.05.2013	Review for Permit
5	04.07	REVISIONS

R&R Commercial Realty ♦ 46 South State Street, Dover, DE 19901 ♦ 302-674-3400 ♦ www.randrcommercialrealty.com