

PALISADE NORTH

NWC Highway 7 & I-25, Broomfield, Colorado

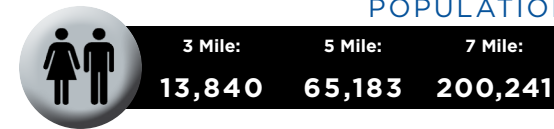


PROPERTY OVERVIEW:

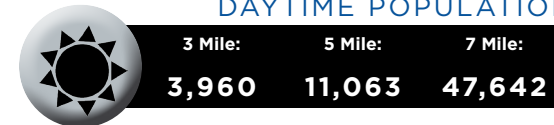
- 77 AC development site
- Great location for retail, showroom, hospitality, distribution
- 50 ft LED monument sign
- 3 additional I-25 monument signs

DEMOGRAPHICS

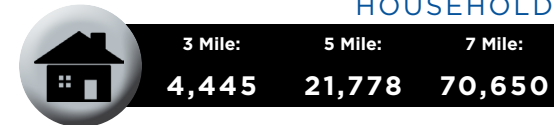
POPULATION



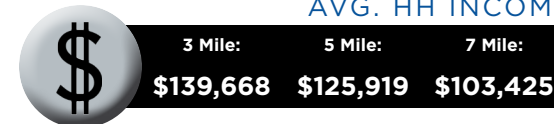
DAYTIME POPULATION



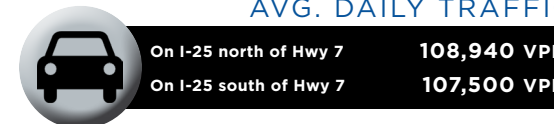
HOUSEHOLDS



AVG. HH INCOME



AVG. DAILY TRAFFIC



For more information:

Scott Crosbie

720-287-6869

scrosbie@creginc.com

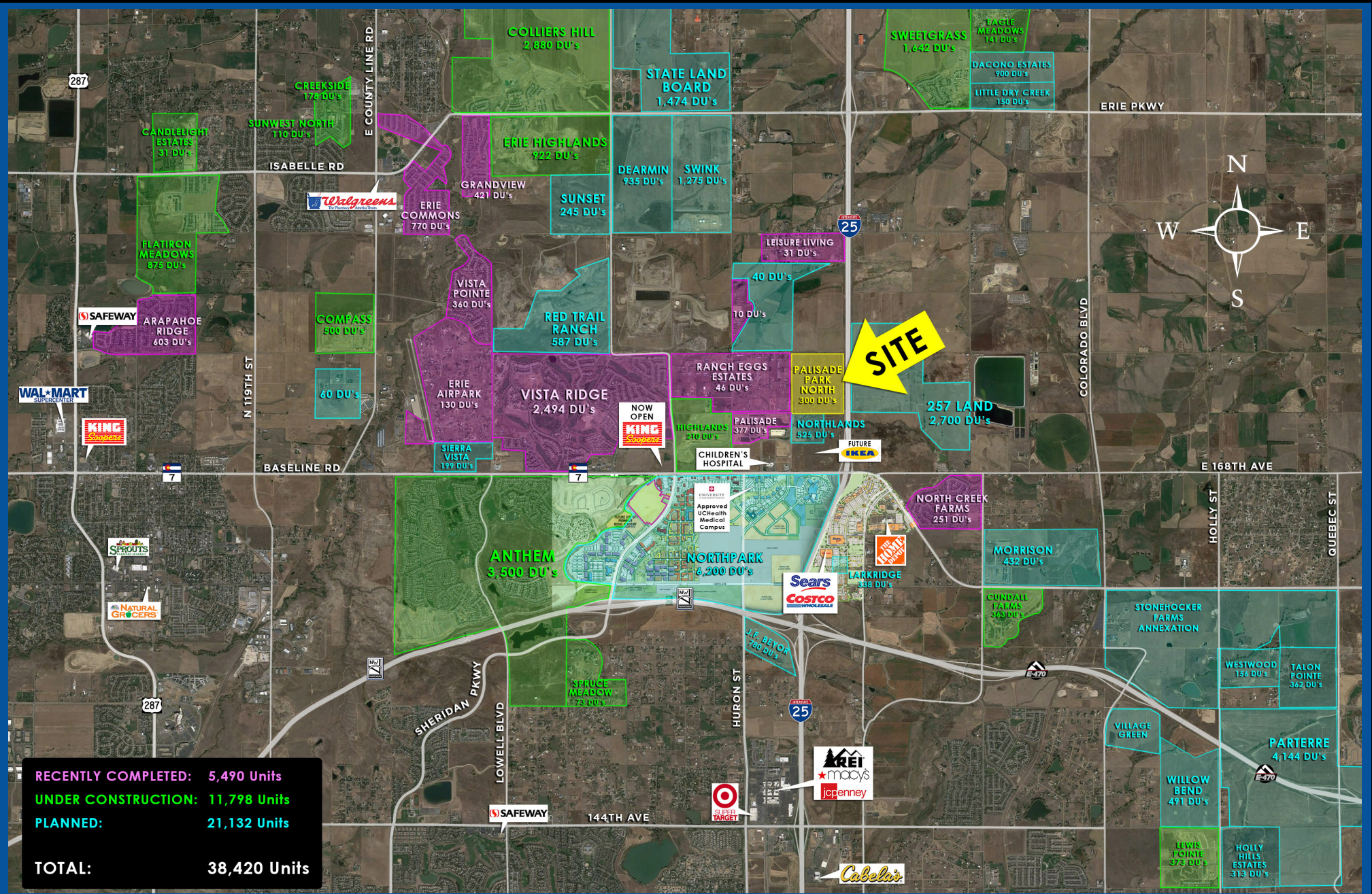
Forrest Hunt

720-598-6049

fhunt@creginc.com

PALISADE NORTH

NWC Highway 7 & I-25, Broomfield, Colorado



Scott Crosbie 720-287-6869 scrosbie@creginc.com
Forrest Hunt 720-598-6049 fhunt@creginc.com

The information contained in this brochure was compiled from reliable sources, however Crosbie Real Estate Group, LLC does not warrant or guarantee the accuracy of the representations herein. Crosbie Real Estate Group, LLC and its broker associates, as listed, are representing the Landlord/Seller of this property. Different brokerage relationships exist.

