



217 W. 9th Street

Wilmington, Delaware 19801

Property Features

- Perfect location for dentist who wants to tap into the growing residential market in Downtown Wilmington!
- Rapidly developing 9th Street corridor
- Easy walk to Downtown Wilmington office and residential buildings
- 1,772 SF
- 5 exam rooms
- Dentist's work area
- X-ray area
- Nice reception area
- Employee lunch room
- \$2,250 per month net of electric and janitorial



For more information:

Jon Hickey

302 322 9500 • C: 302 438 0767 • jonhickey@emoryhill.com

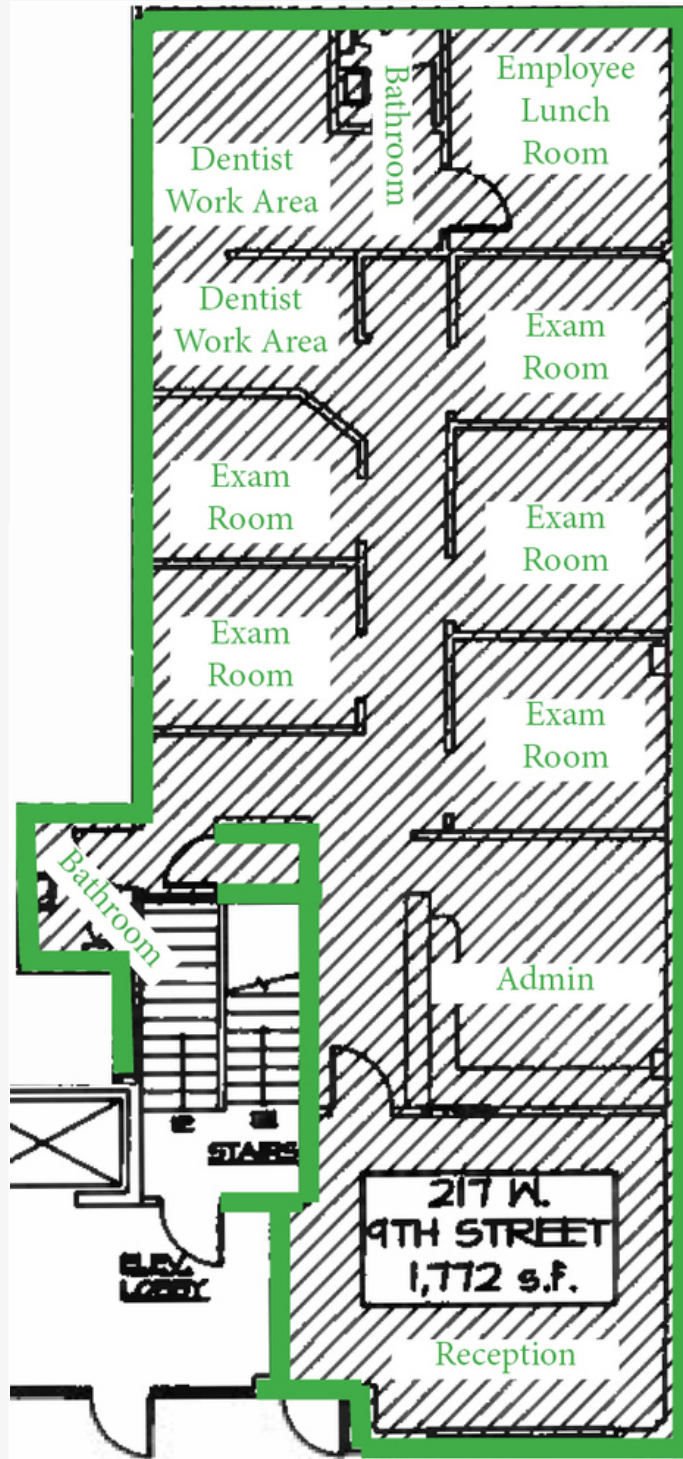
NO WARRANTY OR REPRESENTATION, EXPRESS OR IMPLIED, IS MADE AS TO THE ACCURACY OF THE INFORMATION CONTAINED HEREIN, AND THE SAME IS SUBMITTED SUBJECT TO ERRORS, OMISSIONS, CHANGE OF PRICE, RENTAL OR OTHER CONDITIONS, PRIOR SALE, LEASE OR FINANCING, OR WITHDRAWAL WITHOUT NOTICE, AND OF ANY SPECIAL LISTING CONDITIONS IMPOSED BY OUR PRINCIPALS NO WARRANTIES OR REPRESENTATIONS ARE MADE AS TO THE CONDITION OF THE PROPERTY OR ANY HAZARDS CONTAINED THEREIN ARE ANY TO BE IMPLIED.

Emory Hill Real Estate Services Inc
10 Corporate Circle, New Castle, DE 19720
302 322 9500

naiemoryhill.com

For Lease

Turn Key Dental Office



For Lease
Turn Key Dental Office

