

**Jack**  
in the box  
**UNDER  
CONSTRUCTION**

SHOP LEASE, GROUND LEASE  
OR BUILD TO SUIT



## NEW DEVELOPMENT | Mesa, AZ

- Available: Shop Lease, Ground Lease, or Build to Suit
- **Price: Please Call**
- Located on the hard corner of a grocery anchored intersection
- Close proximity and access to BOTH the Loop 202 & US-60
- Fry's recently completed the expansion of their store and development of a new on-site fuel station due to a long history of strong sales.

**Regan Amato**  
Senior Director  
+1 602 468 8548  
regan.amato@cushwake.com

**Shane Carter**  
Associate  
+1 602 224 4442  
shane.carter@cushwake.com

## Demographics

	1 Mile	3 Mile	5 Mile
Population	15,436	100,686	215,169
Households	6,577	40,131	86,225
AVG. HH Income	\$47,241	\$63,832	\$66,727

ESRI, 2017

## Traffic Counts

North on Ellsworth:  
14,616 VPD

South on Ellsworth:  
25,000 VPD

ESRI, 2017

East on Broadway:  
28,268 VPD

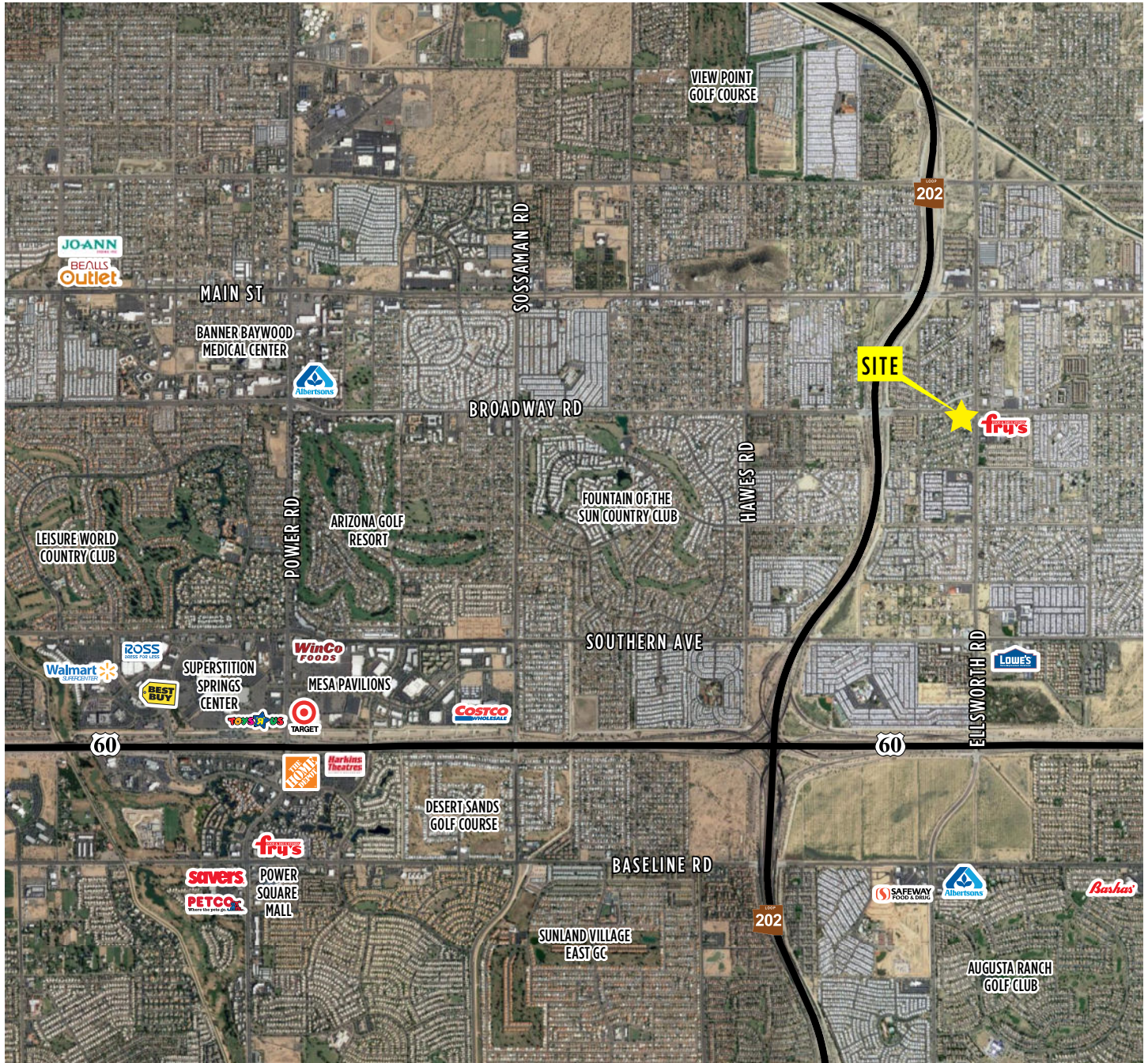
West on Broadway:  
41,400 VPD

2555 E Camelback Rd, Ste 400  
Phoenix, AZ 85016  
main: +1 602 954 9000  
fax: +1 602 253 0528  
**cushmanwakefield.com**





**Aerial Map**



**Regan Amato**  
 Senior Director  
 +1 602 468 8548  
 regan.amato@cushwake.com

**Shane Carter**  
 Associate  
 +1 602 224 4442  
 shane.carter@cushwake.com

2555 E Camelback Rd, Ste 400  
 Phoenix, AZ 85016  
 main: +1 602 954 9000  
 fax: +1 602 253 0528  
[cushmanwakefield.com](http://cushmanwakefield.com)