

# PRINCETON NORTH SHOPPING CENTER

1225 STATE ROAD 206, PRINCETON, NJ

±1,500 SF AVAILABLE FOR LEASE

JOIN

Princeton  
Fitness & Wellness



## property highlights.

- Join: Princeton Fitness & Wellness Center, Burger King, Mr. Tire and more!
- 20,000 vehicles per day on State Route 206
- Full access with traffic light from State Route 206
- Pylon signage available
- \$201,127 Average Household Income within 3 miles

## stats.

2018 DEMOGRAPHICS*	3 MILES	5 MILES	7 MILES
EST. POPULATION	22,549	79,791	158,862
EST. HOUSEHOLDS	8,275	27,721	56,337
EST. AVG. HH INCOME	\$201,127	\$187,625	\$169,505

STATE ROUTE 206 TRAFFIC COUNT: 19,886 VPD \*ESRI 2018

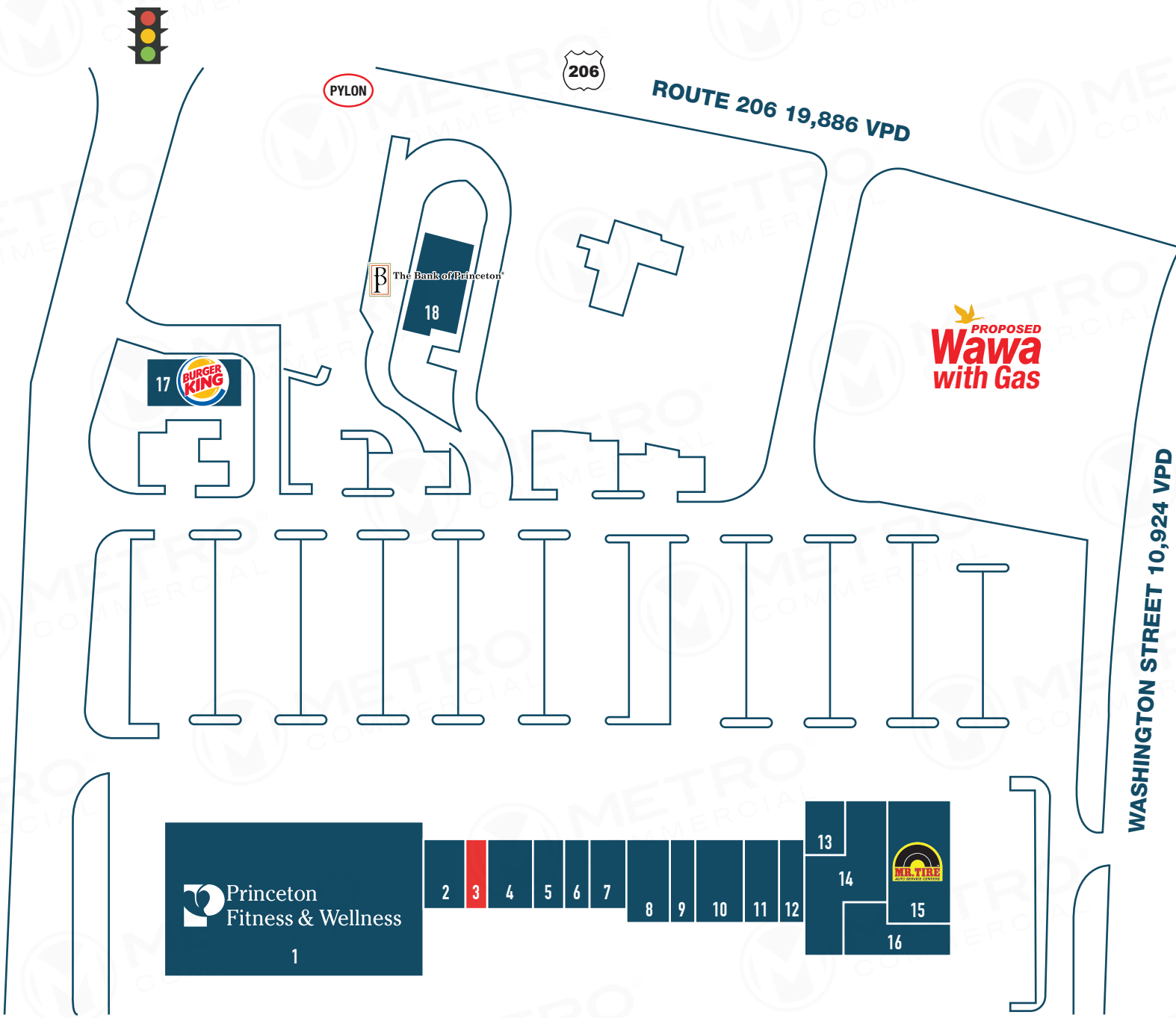


MetroCommercial.com | PHILADELPHIA, PA | PLYMOUTH MEETING, PA | MOUNT LAUREL, NJ | NAPLES, FL | MIAMI, FL

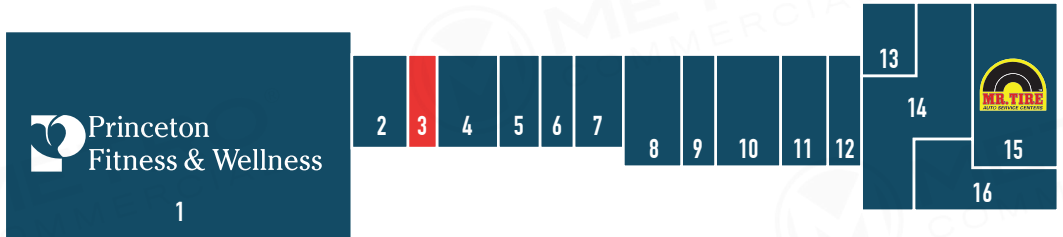
## get in touch.

DAVID JUDD

office 856.866.1900  
direct 856.222.3037  
djudd@metrocommercial.com



- |    |                              |
|----|------------------------------|
| 1  | Princeton Fitness & Wellness |
| 2  | Midori Sushi III             |
| 3  | <b>AVAILABLE - 1,500 SF</b>  |
| 4  | Nuvo Beauty Lounge           |
| 5  | Pizza                        |
| 6  | Subway                       |
| 7  | Dry Cleaners                 |
| 8  | Furniture & Home Decor       |
| 9  | Nail Salon                   |
| 10 | Kickside Martial Arts        |
| 11 | Bagel Barn & Deli            |
| 12 | Hunan Restaurant             |
| 13 | Digital Doc                  |
| 14 | Tumbles                      |
| 15 | Mr. Tire                     |
| 16 | Sweet Gourmet                |
| 17 | Burger King                  |
| 18 | Princeton Bank               |



The information and images contained herein are from sources deemed reliable. However, Metro Commercial Real Estate, Inc. makes no representation whatsoever as to their accuracy or authenticity. Images shown may be modified for illustrative purposes. Images may be out-of-date and not current. 6.05.19

# PRINCETON NORTH SHOPPING CENTER PRINCETON, NJ







MONTGOMERY PROMENADE  
PROPOSED  
WHOLE FOODS  
PROPOSED  
ULTA  
BEAUTY

PROPOSED  
Wawa  
with Gas

Wawa

WASHINGTON STREET 10,924 VPD

206

ROUTE 206 19,886 VPD

BUS STOP

PYLON

BURGER KING

The Bank of Princeton

MR. TIRE  
AUTO SERVICE CENTERS

AVAILABLE  
±1,500 SF  
15'x100'

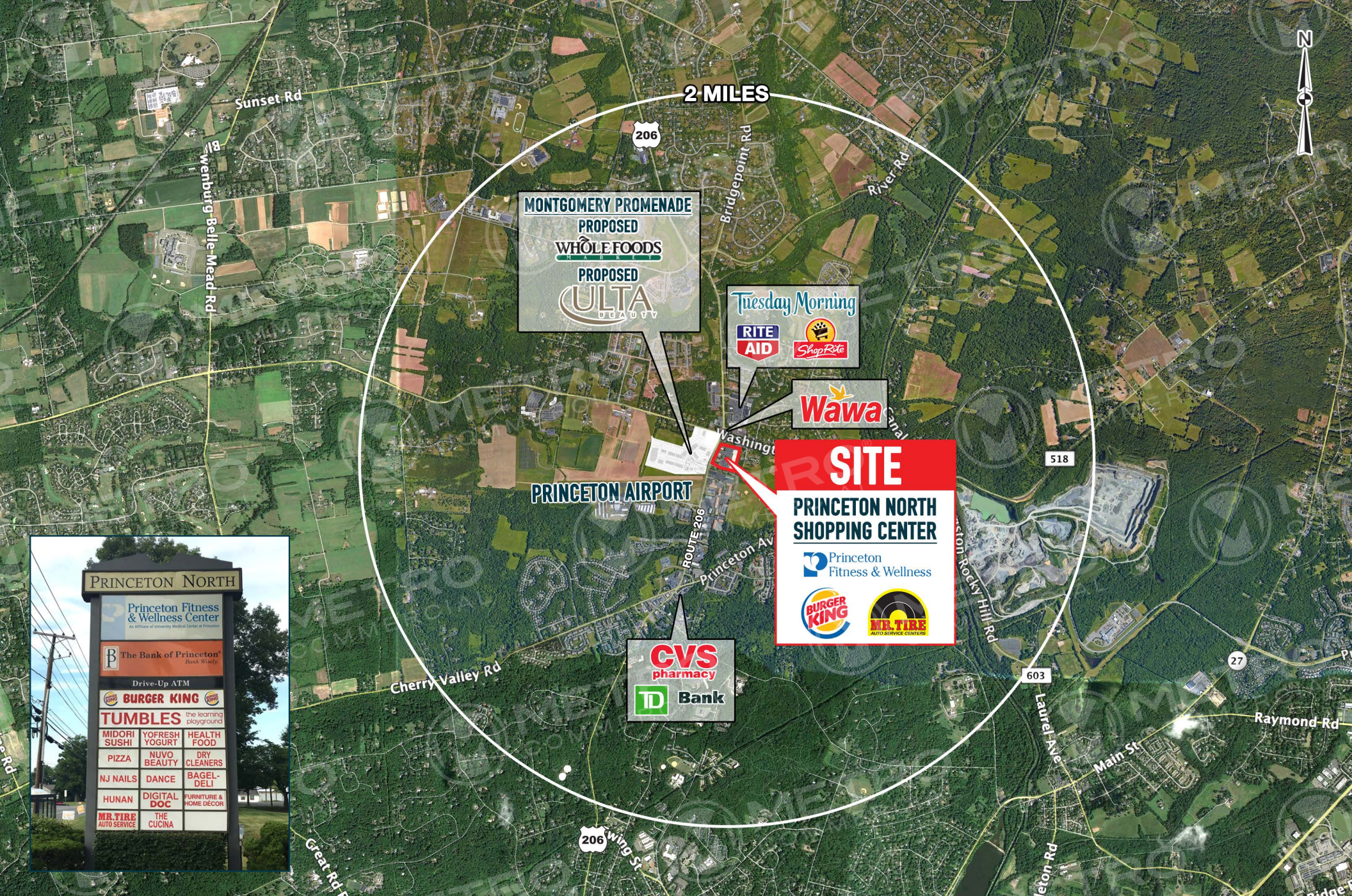
Princeton  
Fitness & Wellness

The information and images contained herein are from sources deemed reliable. However, Metro Commercial Real Estate, Inc. makes no representation whatsoever as to their accuracy or authenticity. Images shown may be modified for illustrative purposes. Images may be out-of-date and not current. 6.05.19

# PRINCETON NORTH SHOPPING CENTER PRINCETON, NJ







The information and images contained herein are from sources deemed reliable. However, Metro Commercial Real Estate, Inc. makes no representation whatsoever as to their accuracy or authenticity. Images shown may be modified for illustrative purposes. Images may be out-of-date and not current. 6.05.19

# PRINCETON NORTH SHOPPING CENTER PRINCETON, NJ





FLEMINGTON

5 MILES

NEW BRUNSWICK

**MONTGOMERY PROMENADE**  
 PROPOSED  
**WHOLE FOODS**  
 PROPOSED  
**ULTA**  
 BEAUTY

Tuesday Morning  
**RITE AID**  
**ShopRite**

**Wawa**

**TARGET**  
**COSTCO**  
 WHOLESALE

MONTGOMERY

**SITE**  
**PRINCETON NORTH SHOPPING CENTER**  
 Princeton Fitness & Wellness  
**BURGER KING**  
**MR. TIRE**  
 AUTO SERVICE CENTERS

**CVS**  
 pharmacy  
**TD Bank**

**THE HOME DEPOT**  
 Proposed  
**ShopRite**

**TARGET**  
**PETSMART**  
**BOB'S FURNITURE**

**NASSAU PARK PAVILION**  
**Michaels**  
**Target**  
**Wegmans**  
**Dick's**  
**Curlington**  
**PETSMART**  
**Kohl's**  
**Walmart**  
**HomeGoods**  
**Raymour & Flanigan**  
**OUTLET**

**BARNES & NOBLE**

**WHOLE FOODS**  
**STAPLES**

**MERCER MALL**  
**JO-ANN**  
 fabric and craft stores  
**BED BATH & BEYOND**  
**ShopRite**  
**TJ-max**  
**ROSS**  
**petco**  
**DSW**  
**rack**  
**REI**  
**JO-ANN**  
 fabric and craft stores  
**Raymour & Flanigan**  
 FURNITURE

**HOBBY LOBBY**

**LOWE'S**  
**TRADER JOE'S**

**QUAKERBRIDGE MALL**  
 OWNER: KRAVCO SIMON  
 GLA: 4,132,342 SF  
 SALES: \$425 PSF  
**macy's**  
**FOREVER 21**  
**H&M**

The information and images contained herein are from sources deemed reliable. However, Metro Commercial Real Estate, Inc. makes no representation whatsoever as to their accuracy or authenticity. Images shown may be modified for illustrative purposes. Images may be out-of-date and not current. 6.05.19

# PRINCETON NORTH SHOPPING CENTER PRINCETON, NJ







The information and images contained herein are from sources deemed reliable. However, Metro Commercial Real Estate, Inc. makes no representation whatsoever as to their accuracy or authenticity. Images shown may be modified for illustrative purposes. Images may be out-of-date and not current. 6.05.19

## PRINCETON NORTH SHOPPING CENTER PRINCETON, NJ

