

FOR LEASE

EAGLE POINTE
1764-1784 S ORTONVILLE ROAD
ORTONVILLE, MI 48462



PROPERTY FEATURES:

- For Lease: 1,500 SF
- Join Little Caesars!
- Freshly renovated center situated at the signalized corner of Ortonville Rd & Glass Rd
- Excellent demographics and strong traffic counts
- Motivated landlord!
- Asking Lease Rate: \$12.95 NNN



FOR MORE INFORMATION PLEASE CONTACT:

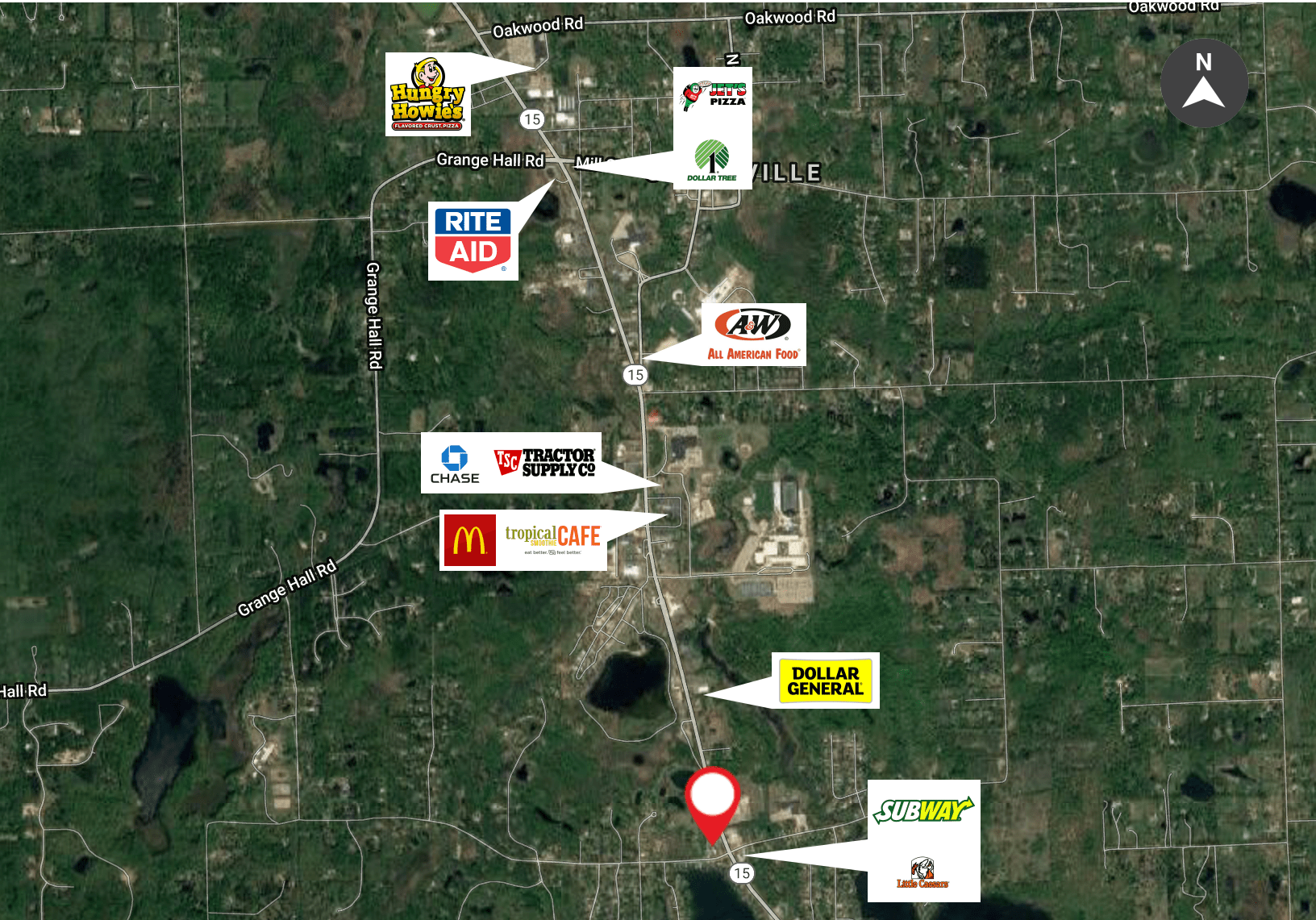
JOEL KESTENBERG
joel.kestenberg@freg.com

248.324.2000

eCODE 835

FOR LEASE

EAGLE POINTE
1764-1784 S ORTONVILLE ROAD
ORTONVILLE, MI 48462



Map data ©2019 Google Imagery ©2019 , CNES / Airbus, DigitalGlobe, Landsat / Copernicus, U.S. Geological Survey, USDA Farm Service Agency

TRAFFIC COUNTS

INTERSECTION	CARS PER DAY
S Ortonville Rd & W Glass Rd	±20,820
S Ortonville Rd & Allen Rd	±21,172
S Ortonville Rd & Elizabeth Rd	±20,995

DEMOGRAPHICS

	1 MILE	5 MILES	10 MILES
Total Households	477	9,181	47,369
Total Population	1,216	26,675	132,833
Average HH Income	\$83,441	\$94,396	\$89,813

FOR MORE INFORMATION PLEASE CONTACT:

JOEL KESTENBERG joel.kestenberg@freg.com

248.324.2000

eCODE 835