

Zoned Multi-Family Development Land

290 Multi-Family Units & 80,000 SF Climate Controlled Storage Facility
SWC Green Hills Road & 152 Highway / Kansas City, MO

[HOME](#)[LAND HIGHLIGHTS](#)[LOCATION AERIAL](#)[SITE/GRADING PLANS](#)[RENDERINGS](#)

For more information, please contact:

Craig Kelly, SIOR
Director
+1 816 412 0279
craig.kelly@cushwake.com

Whitney E. Kerr, Jr., SIOR, CCIM
Managing Director
+1 816 412 0250
whitney.kerrjr@cushwake.com

4600 Madison Avenue, Suite 800
Kansas City, MO 64112
Main +1 816 221 2200
Fax +1 816 842 2798
cushmanwakefield.com

Land Highlights

- 27± acres zoned and ready for development
- Zoned for 290 multi-family units and a two story 80,000 SF climate controlled storage facility
- Located at Green Hills Road north of the river in Kansas City, MO
- Established Autumn Ridge neighborhood - Tiffany Ridge Elementary/Park Hill School District
- All utilities available
- Immediate access to KCI, Zona Rosa, Boardwalk Square, St. Luke's North Hospital, Menards, Costco and HyVee
- Immediately west of new Menards
- Sale Price: \$3,500,000

Demographics

	1 Mile	3 Miles	5 Miles
Population	7,913	40,841	115,690
AVG. HH Income	\$82,462	\$82,297	\$85,595

Traffic Counts

On 152 Highway	51,761 Cars Per Day
On Green Hills Road	990 Cars Per Day

For more information, please contact:

Craig Kelly, SIOR
Director
+1 816 412 0279
craig.kelly@cushwake.com

Whitney E. Kerr, Jr., SIOR, CCIM
Managing Director
+1 816 412 0250
whitney.kerrjr@cushwake.com

4600 Madison Avenue, Suite 800
Kansas City, MO 64112
Main +1 816 221 2200
Fax +1 816 842 2798
cushmanwakefield.com

SWC Green Hills Road & 152 Highway Kansas City, MO

[HOME](#)[LAND HIGHLIGHTS](#)[LOCATION AERIAL](#)[SITE/GRADING PLANS](#)[RENDERINGS](#)

For more information, please contact:

Craig Kelly, SIOR
Director
+1 816 412 0279
craig.kelly@cushwake.com

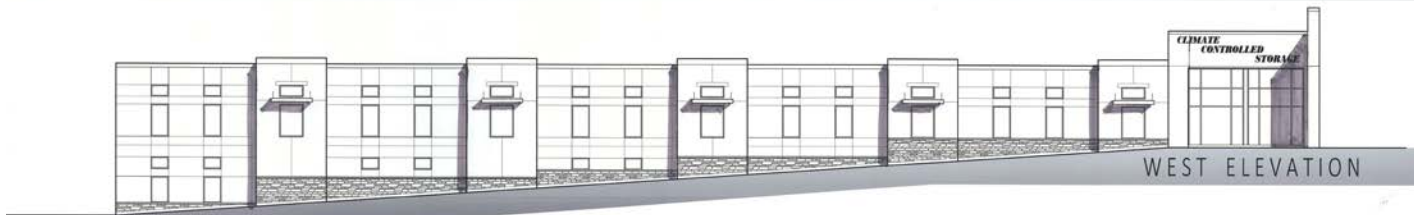
Whitney E. Kerr, Jr., SIOR, CCIM
Managing Director
+1 816 412 0250
whitney.kerrjr@cushwake.com

4600 Madison Avenue, Suite 800
Kansas City, MO 64112
Main +1 816 221 2200
Fax +1 816 842 2798
cushmanwakefield.com

SWC Green Hills Road & 152 Highway Kansas City, MO

[HOME](#)[LAND HIGHLIGHTS](#)[LOCATION AERIAL](#)[SITE/GRADING PLANS](#)[RENDERINGS](#)

NORTH ELEVATION



WEST ELEVATION



SOUTH ELEVATION



MATERIAL PALETTE



STONE VENEER



EIFS - DRYVIT



EIFS - DRYVIT

View next
rendering



For more information, please contact:

Craig Kelly, SIOR
Director
+1 816 412 0279
craig.kelly@cushwake.com

Whitney E. Kerr, Jr., SIOR, CCIM
Managing Director
+1 816 412 0250
whitney.kerrjr@cushwake.com

4600 Madison Avenue, Suite 800
Kansas City, MO 64112
Main +1 816 221 2200
Fax +1 816 842 2798
cushmanwakefield.com

SWC Green Hills Road & 152 Highway Kansas City, MO

[HOME](#)[LAND HIGHLIGHTS](#)[LOCATION AERIAL](#)[SITE/GRADING PLANS](#)[RENDERINGS](#)

View next
rendering



MATERIAL PALETTE



STONE VENEER



PAINT - HORIZ LAP SIDING



PAINT - ACCENT / SHAKE SIDING



PAINT - ROOF BRACKETS

For more information, please contact:

Craig Kelly, SIOR
Director
+1 816 412 0279
craig.kelly@cushwake.com

Whitney E. Kerr, Jr., SIOR, CCIM
Managing Director
+1 816 412 0250
whitney.kerrjr@cushwake.com

4600 Madison Avenue, Suite 800
Kansas City, MO 64112
Main +1 816 221 2200
Fax +1 816 842 2798
cushmanwakefield.com

SWC Green Hills Road & 152 Highway Kansas City, MO



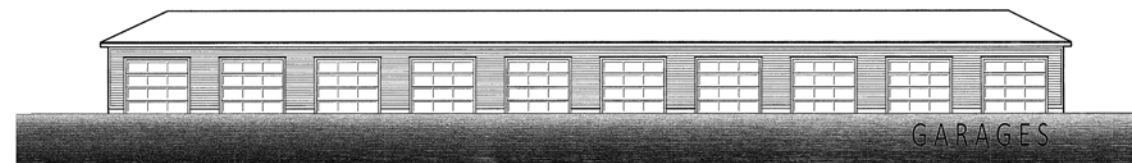
HOME

LAND HIGHLIGHTS

LOCATION AERIAL

SITE/GRADING PLANS

RENDERINGS



For more information, please contact:

Craig Kelly, SIOR
Director
+1 816 412 0279
craig.kelly@cushwake.com

Whitney E. Kerr, Jr., SIOR, CCIM
Managing Director
+1 816 412 0250
whitney.kerrjr@cushwake.com

4600 Madison Avenue, Suite 800
Kansas City, MO 64112
Main +1 816 221 2200
Fax +1 816 842 2798
cushmanwakefield.com