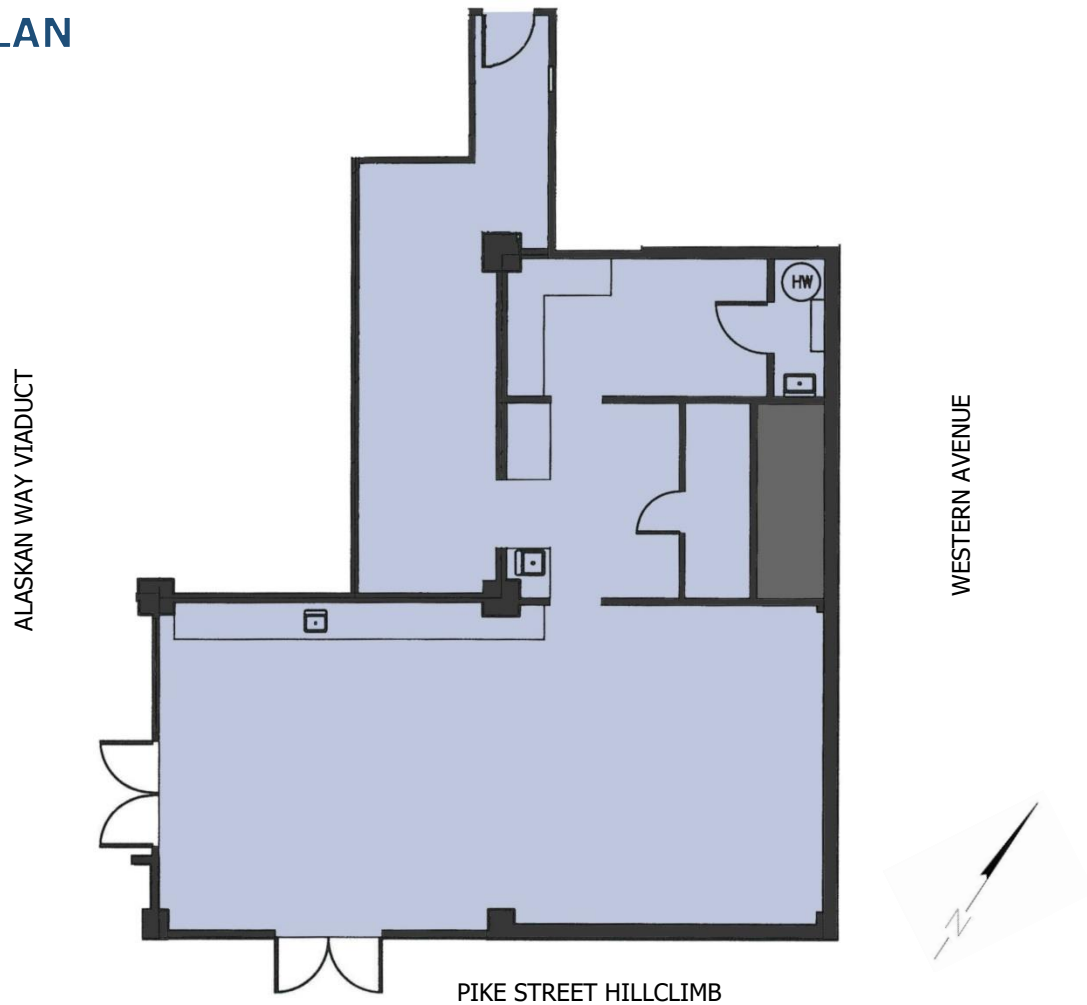


## AVAILABLE SPACE – MADORE BUILDING

**Suite 300.** Retail or restaurant space, approximately 1,681 rentable square feet, with current layout featuring seating area, workspace, food prep room, and storage room. Direct access to outdoor patio on the Pike Hillclimb offers al fresco dining experience to customers.

### FLOOR PLAN



### EXTERIOR VISUALS

