

S/SEC HWY 347 & EDISON RD

MARICOPA, AZ



FAST & FRIENDLY
EXPRESS CAR WASH



NOT TO SCALE

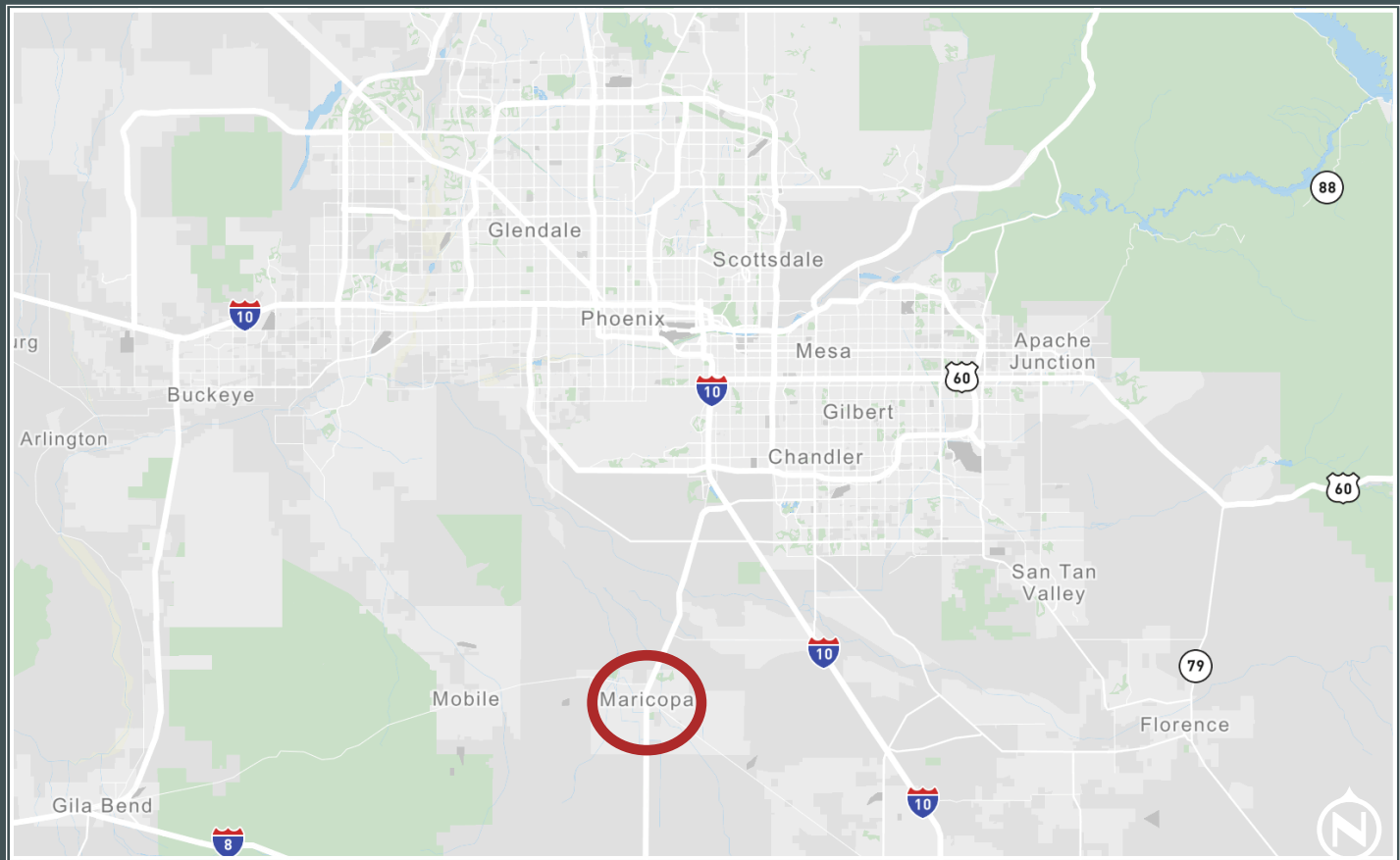
S/SEC HWY 347 & EDISON ST

Maricopa, AZ



Property Highlights

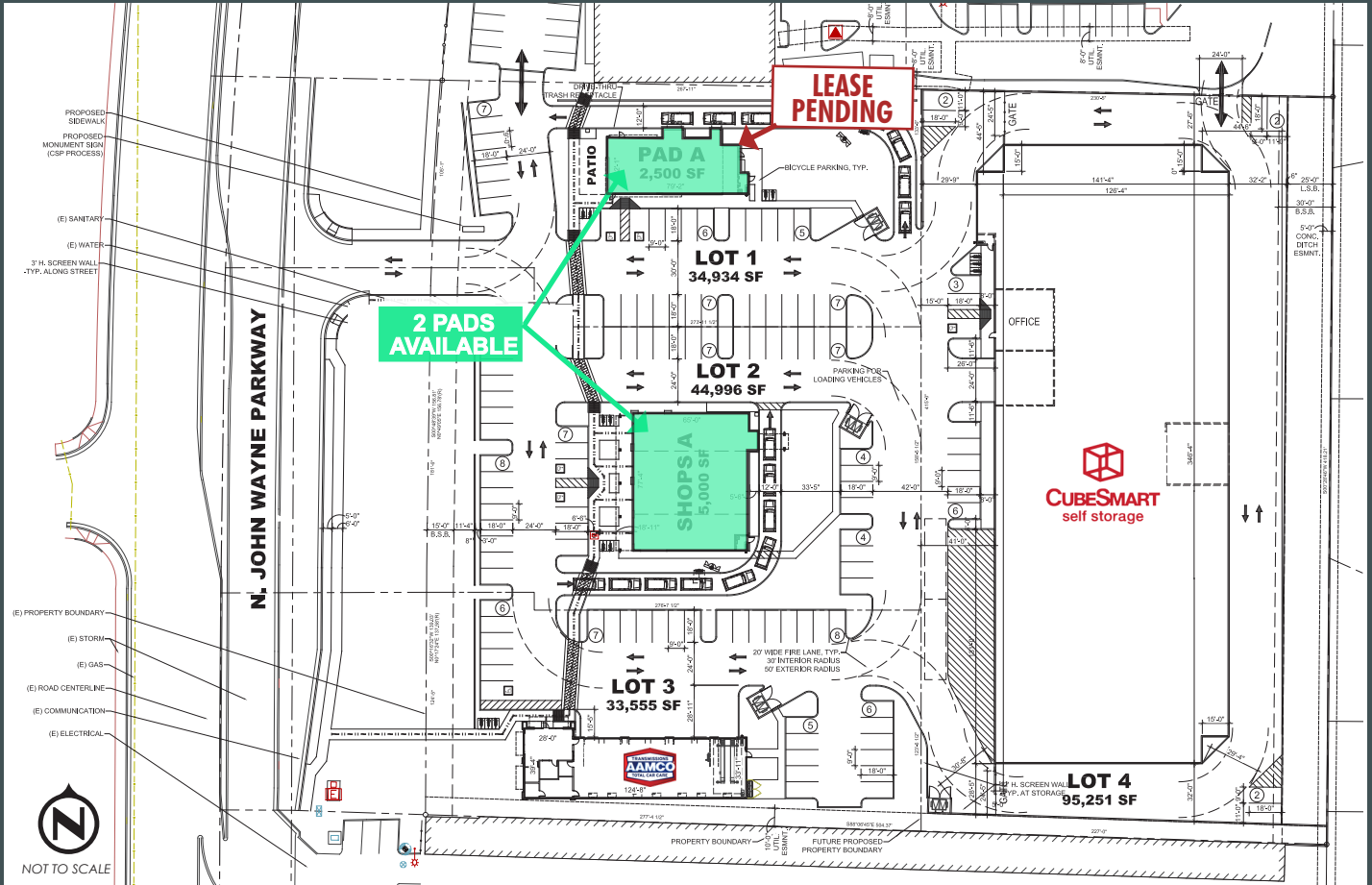
- + Cross access with shopping center to the north
- + Municipality: Maricopa, Arizona
- + Highway 347 Traffic Counts (Source: ADOT)
 - North: ±30,966 VPD
 - South: ±30,874 VPD
- + This site is strategically located within the primary commercial corridor in the City of Maricopa
- + Price: Call for pricing
- + 387 new businesses started in the Maricopa area within the last 3 years
- + The average household income in Maricopa is \$85,000; this is among the highest in the State of Arizona
- + Maricopa has one of the lowest crime rates in Metro Phoenix
- + Maricopa is located on a Union Pacific Railroad line.



NOT TO SCALE

Demographics	±1 Mile	±3 Miles	±5 Miles
2021 Population - Current Year Estimate	12,158	51,666	55,441
2026 Population - Five Year Projection	12,514	55,544	59,947
2021 Households - Current Year Estimate	3,921	17,455	18,722
2026 Households - Five Year Projection	4,031	18,836	20,310
2021 Average Household Income	\$91,757	\$90,670	\$90,725
2026 Average Household Income	\$102,503	\$100,872	\$101,036
2021 Businesses	270	468	498
2021 Employees	2,655	5,114	5,603

Site Plan



Contact Us

Max Bippus
First Vice President
+1 602 735 5518
max.bippus@cbre.com

© 2022 CBRE, Inc. All rights reserved. This information has been obtained from sources believed reliable, but has not been verified for accuracy or completeness. You should conduct a careful, independent investigation of the property and verify all information. Any reliance on this information is solely at your own risk. CBRE and the CBRE logo are service marks of CBRE, Inc. All other marks displayed on this document are the property of their respective owners, and the use of such logos does not imply any affiliation with or endorsement of CBRE. Photos herein are the property of their respective owners. Use of these images without the express written consent of the owner is prohibited.