

CORPORATE PLAZA

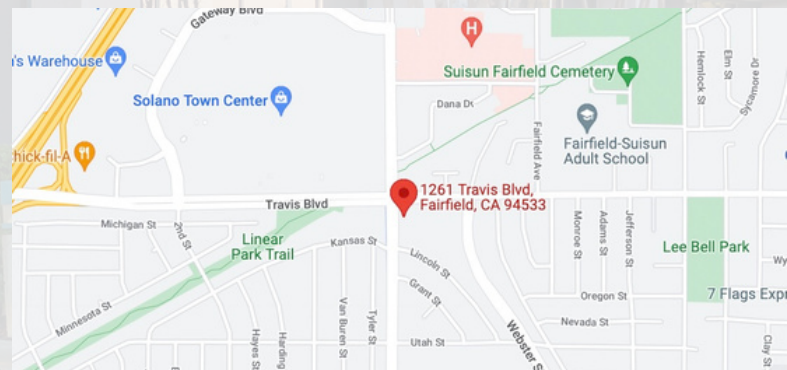
CLASS A OFFICE FOR LEASE

1261 TRAVIS BLVD
FAIRFIELD, CA 94533



PROPERTY OVERVIEW

Corporate Plaza is a marquee Class A office building centrally located in Fairfield and proximate to Solano Town Center, Northbay Medical Center, Kaiser, and the Solano County Courthouse. The building's premium amenities including an elegant lobby, elevator, landscaped balconies, EV charging, and professional management make for an exceptional environment for companies seeking a central location in the North Bay Area.



AVAILABLE SPACES

SUITE #	RENT	SUITE SIZE
Suite 100	Negotiable	500 - 1,589 SF
Suite 170	Negotiable	2,019 SF
Suite 210	Negotiable	1,549 SF
Suite 330	Negotiable	2,000 - 3,938 SF

AMENITIES

- Professional Management
- Elevator Access
- Underground Parking
- Monument Signage
- Security Monitoring
- EV Charging Stations
- Underground Parking

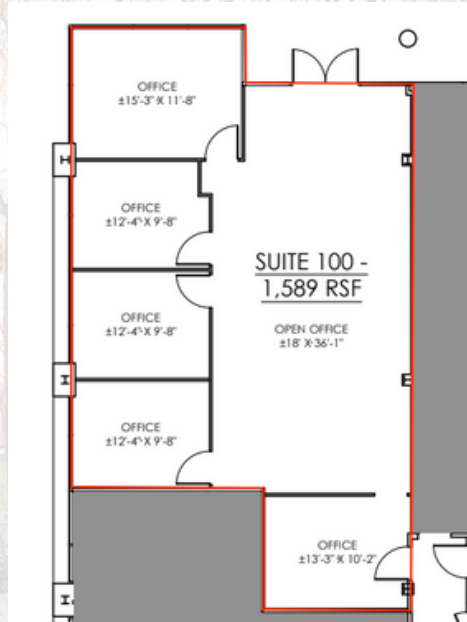
BUILDING SUMMARY

Building Size: 39,026 SF
Available SF: 9,096 SF
Parking: 125 Spaces
Year Built: 1989

AVAILABLE SPACES

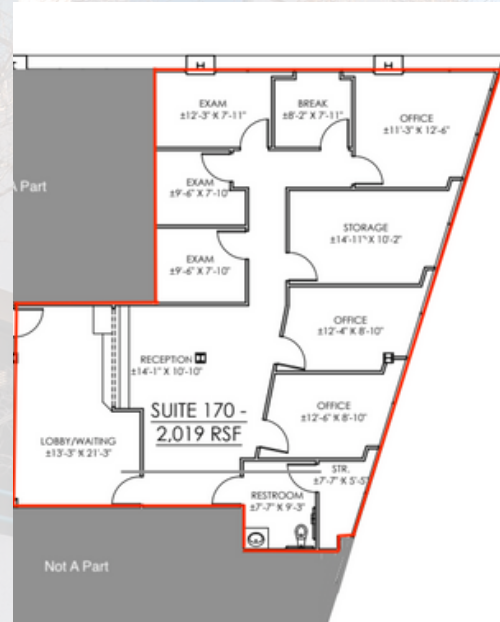
SUITE 100

Suite Size: 1,589 SF
Buildout: Medical Office
Off/Conf Rms: 4 / 1
Notes: Hallway + street entry, premium ground floor location, generous open office



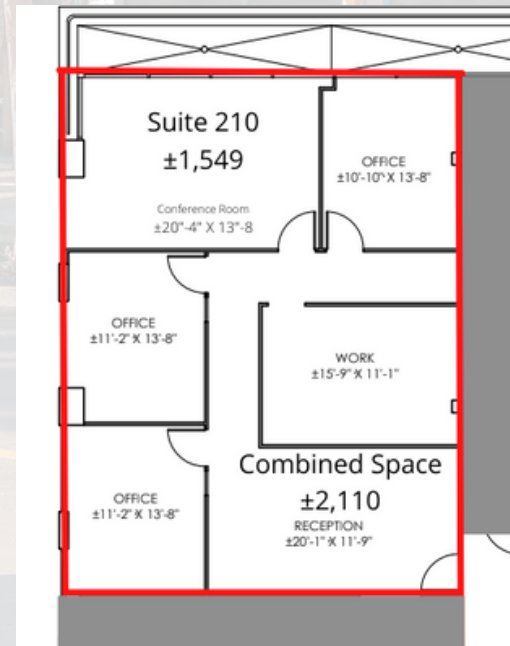
SUITE 170

Suite Size: 2,019 SF
Buildout: Medical Office
Off/Conf Rms: 6 / 1
Notes: In-suite waiting, break and restroom, multiple exam/offices with conference room



SUITE 210

Suite Size: 1,549 SF
Buildout: Office
Off/Conf Rms: 4 / 1
Notes: New carpet, optional server/break room, open reception/waiting room, move in ready



SUITE 330

Suite Size: 3,938 SF
Buildout: Office
Off/Conf Rms: 4 / 1
Notes: Premium penthouse, glass conference room, landscaped balcony, executive office

