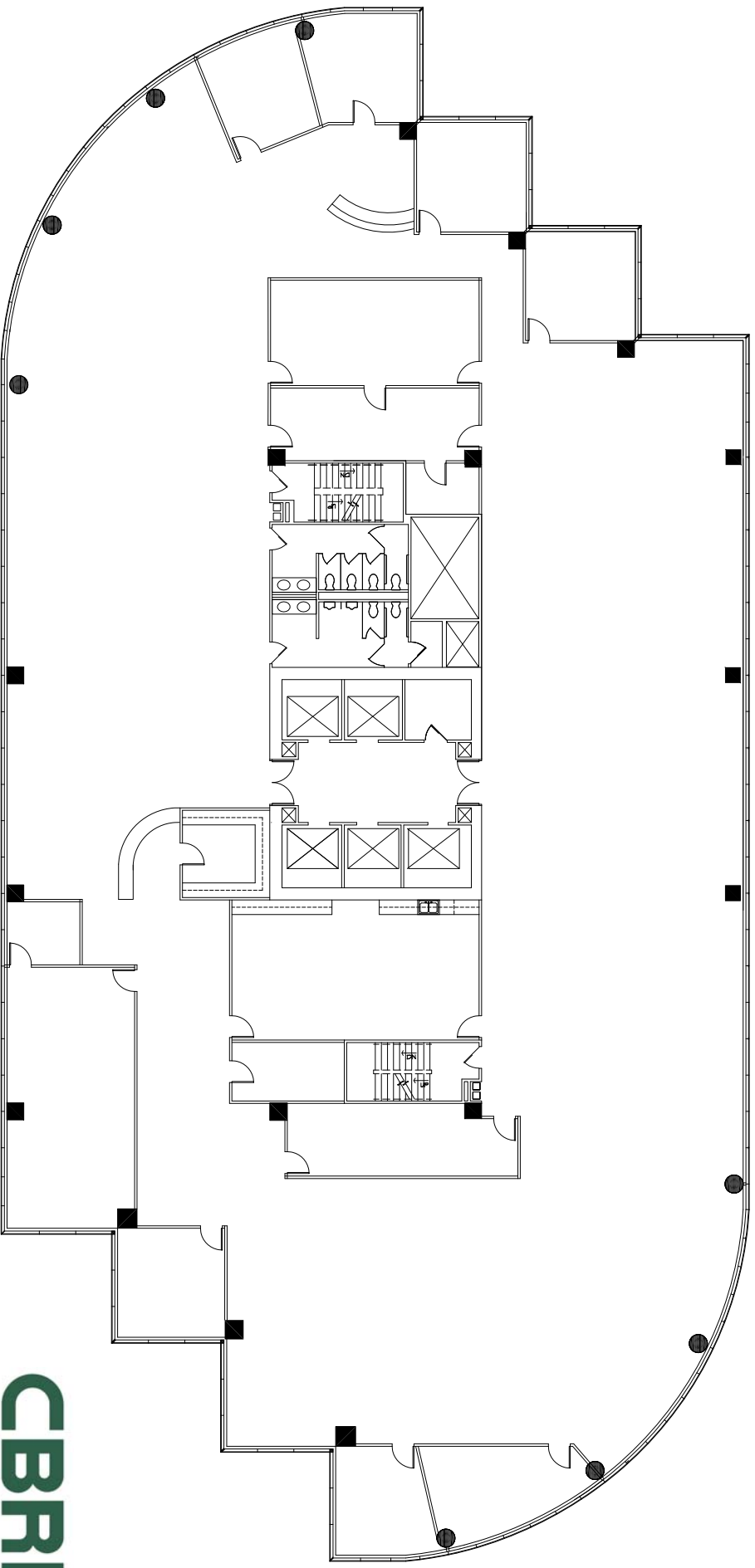


ONE DTC

5251 DTC PARKWAY



SEVENTH LEVEL PLAN

SUITE #700
18,692 R.S.F.

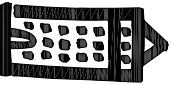


JOE SERIENO

Direct: (303) 628-1702
Joe.Serieno@cbre.com

JOHN MILLER

Direct: (720) 528-6511
John.D.Miller@cbre.com



WARING
ASSOCIATES