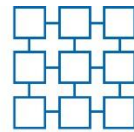


**HIGH PARKING RATIO**



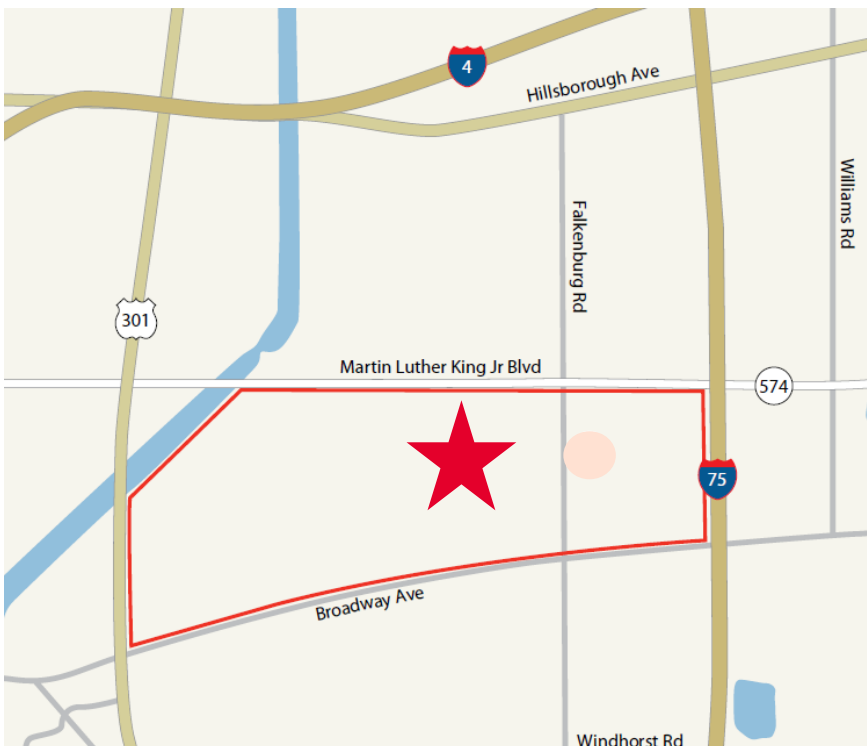
**Property Highlights**

- Newly renovated lobby & common areas
- Efficient floor plate design to accommodate small, medium, and large users
- Available Suites range from 833 RSF to 1,053 RSF
- Two-story lobby with granite flooring
- Ample surface Parking



**THE COLLECTION**

**AT SABAL PARK**



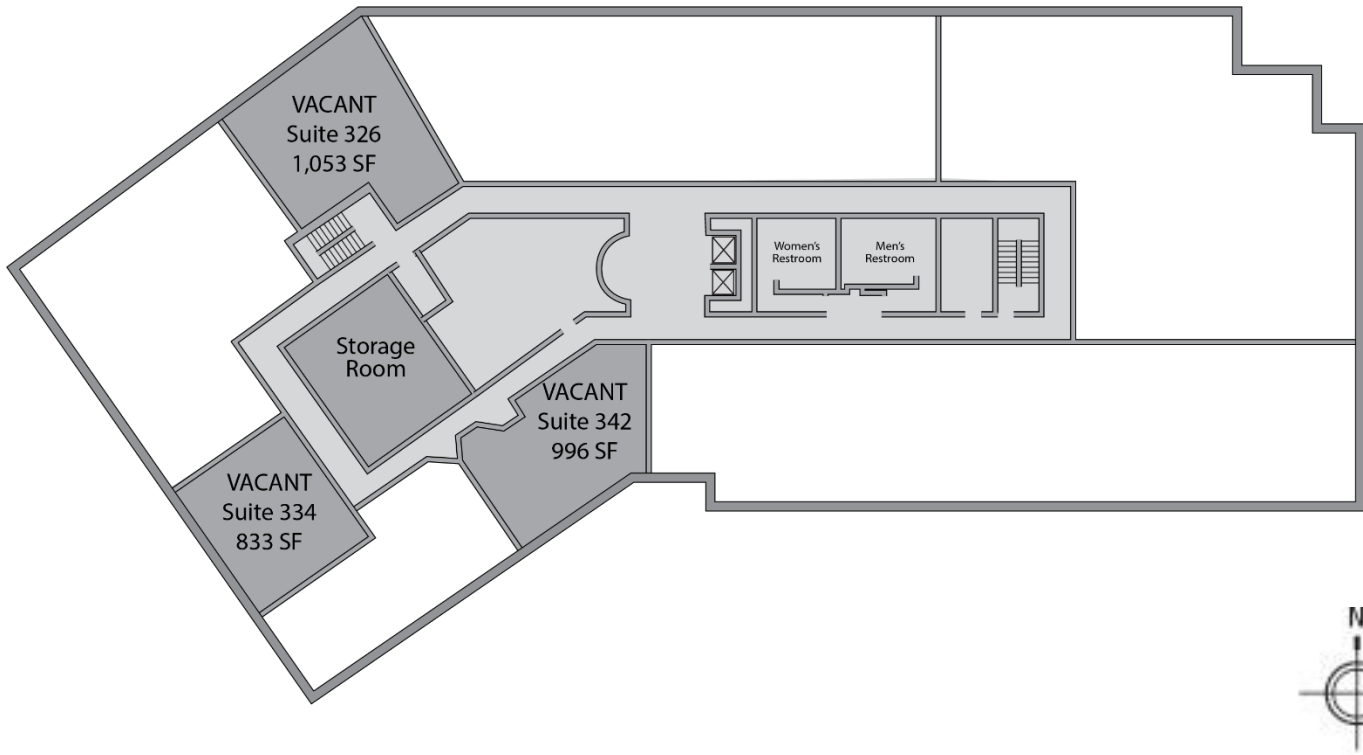
For more information, please contact:

**Mercedes Angell**  
Senior Director  
+1 813 204 5344  
[mercedes.angell@cushwake.com](mailto:mercedes.angell@cushwake.com)

**Lauren Coup**  
Director  
+1 813 204 5342  
[lauren.coup@cushwake.com](mailto:lauren.coup@cushwake.com)

[cushmanwakefield.com](http://cushmanwakefield.com)

## 3<sup>rd</sup> Floor Plate



Building Features	
Total Square Feet	60,790 RSF
Total Available	2,882 RSF
Lease Rate	\$22.00 / RSF Full Service
Parking Ratio	4.66 / 1,000 RSF

Suite	Total RSF	Max Contig.	Available
326	1,053		Immediately
334	833		Immediately
342	996		Immediately