

Medical Office Space For Lease In Conway Regional Medical Park Daniel Building



OFFERING SUMMARY

Lease Rate:	\$7,600.00 per month (MG)
Building Size:	9,014 SF
Available SF:	4,645 SF
Lot Size:	1.15 Acres
Year Built:	2000
Renovated:	2018
Zoning:	O-1
Market:	Central Arkansas
Submarket:	Conway, Arkansas
Traffic Count:	35,000

PROPERTY OVERVIEW

Located in one of the six office buildings in Conway Regional Medical Office Park, this space is set in a campus style setting. Pharmacy, largest family practice clinic in Conway, and 6 specialty clinics are located in Conway Regional Medical Park.

PROPERTY HIGHLIGHTS

- Easy Access to both Conway Regional Medical Center & Baptist Health
- Pharmacy & 6 specialty clinics located in Conway Regional Medical Park
- Banister-Lieblong Clinic, Conway's largest family practice clinic is in CRMP
- Across the street from University of Central Arkansas
- Dave Ward Drive is Conway's main east-west connector

GREG NABHOLZ

O: 501.505.5720

C: 501.329.4468

greg_nabholz@nabprop.com

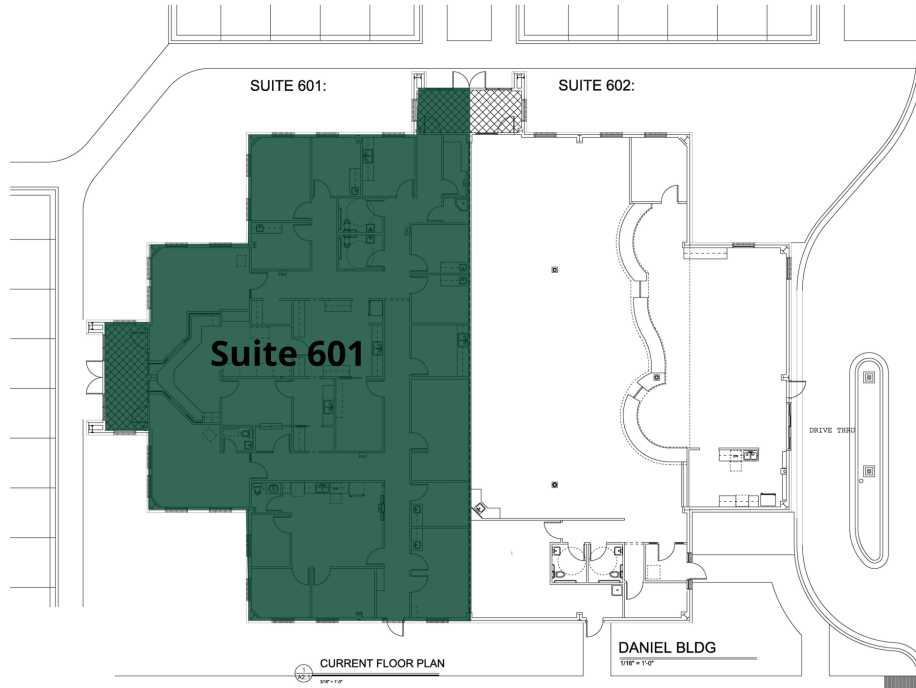
Nabholz Properties | 700 Front Street | Suite 101 | Conway, AR 72032 | 501.505.5720 | nabprop.com

Nabholz Properties Inc. represents the owner of the property represented herein. Although all information furnished regarding property for sale, rental, or financing is from sources deemed reliable, such information has not been verified and no express representation is made nor is any to be implied as to the accuracy thereof and it is submitted subject to errors, omissions, change of price, rental or other conditions, prior sale, lease or financing, or withdrawal without notice.



CONWAY, ARKANSAS
2425 DAVE WARD DRIVE - DANIEL BUILDING

Medical Office Space For Lease In Conway Regional Medical Park Daniel Building



LEGEND

Available

LEASE INFORMATION

Lease Type:	MG	Lease Term:	36 months
Total Space:	4,645 SF	Lease Rate:	\$7,600.00 per month

AVAILABLE SPACES

SUITE	TENANT	SIZE	TYPE	RATE	DESCRIPTION
Suite 601	Available	4,645 SF	Modified Gross	\$7,600 per month	-

GREG NABHOLZ

O: 501.505.5720
C: 501.329.4468
greg_nabholz@nabprop.com

Nabholz Properties | 700 Front Street | Suite 101 | Conway, AR 72032 | 501.505.5720 | nabprop.com

Nabholz Properties Inc. represents the owner of the property represented herein. Although all information furnished regarding property for sale, rental, or financing is from sources deemed reliable, such information has not been verified and no express representation is made nor is any to be implied as to the accuracy thereof and it is submitted subject to errors, omissions, change of price, rental or other conditions, prior sale, lease or financing, or withdrawal without notice.



CONWAY, ARKANSAS
2425 DAVE WARD DRIVE - DANIEL BUILDING

Medical Office Space For Lease In Conway Regional Medical Park Daniel Building



GREG NABHOLZ

O: 501.505.5720

C: 501.329.4468

greg_nabholz@nabprop.com

Nabholz Properties | 700 Front Street | Suite 101 | Conway, AR 72032 | 501.505.5720 | nabprop.com

Nabholz Properties Inc. represents the owner of the property represented herein. Although all information furnished regarding property for sale, rental, or financing is from sources deemed reliable, such information has not been verified and no express representation is made nor is any to be implied as to the accuracy thereof and it is submitted subject to errors, omissions, change of price, rental or other conditions, prior sale, lease or financing, or withdrawal without notice.



CONWAY, ARKANSAS
2425 DAVE WARD DRIVE - DANIEL BUILDING

Medical Office Space For Lease In Conway Regional Medical Park Daniel Building



GREG NABHOLZ

O: 501.505.5720

C: 501.329.4468

greg_nabholz@nabprop.com

Nabholz Properties | 700 Front Street | Suite 101 | Conway, AR 72032 | 501.505.5720 | nabprop.com

Nabholz Properties Inc. represents the owner of the property represented herein. Although all information furnished regarding property for sale, rental, or financing is from sources deemed reliable, such information has not been verified and no express representation is made nor is any to be implied as to the accuracy thereof and it is submitted subject to errors, omissions, change of price, rental or other conditions, prior sale, lease or financing, or withdrawal without notice.



CONWAY, ARKANSAS
2425 DAVE WARD DRIVE - DANIEL BUILDING

Medical Office Space For Lease In Conway Regional Medical Park Daniel Building



GREG NABHOLZ

O: 501.505.5720

C: 501.329.4468

greg_nabholz@nabprop.com

Nabholz Properties | 700 Front Street | Suite 101 | Conway, AR 72032 | 501.505.5720 | nabprop.com

Nabholz Properties Inc. represents the owner of the property represented herein. Although all information furnished regarding property for sale, rental, or financing is from sources deemed reliable, such information has not been verified and no express representation is made nor is any to be implied as to the accuracy thereof and it is submitted subject to errors, omissions, change of price, rental or other conditions, prior sale, lease or financing, or withdrawal without notice.



CONWAY, ARKANSAS
2425 DAVE WARD DRIVE - DANIEL BUILDING

Medical Office Space For Lease In Conway Regional Medical Park Daniel Building



GREG NABHOLZ

O: 501.505.5720

C: 501.329.4468

greg_nabholz@nabprop.com

Nabholz Properties | 700 Front Street | Suite 101 | Conway, AR 72032 | 501.505.5720 | nabprop.com

Nabholz Properties Inc. represents the owner of the property represented herein. Although all information furnished regarding property for sale, rental, or financing is from sources deemed reliable, such information has not been verified and no express representation is made nor is any to be implied as to the accuracy thereof and it is submitted subject to errors, omissions, change of price, rental or other conditions, prior sale, lease or financing, or withdrawal without notice.



CONWAY, ARKANSAS
2425 DAVE WARD DRIVE

Gordy & Taylor Buildings Conway Regional Medical Park



GREG NABHOLZ

O: 501.505.5720

C: 501.329.4468

greg_nabholz@nabprop.com

Nabholz Properties | 700 Front Street | Suite 101 | Conway, AR 72032 | 501.505.5720 | nabprop.com

Nabholz Properties Inc. represents the owner of the property represented herein. Although all information furnished regarding property for sale, rental, or financing is from sources deemed reliable, such information has not been verified and no express representation is made nor is any to be implied as to the accuracy thereof and it is submitted subject to errors, omissions, change of price, rental or other conditions, prior sale, lease or financing, or withdrawal without notice.



CONWAY, ARKANSAS
2425 DAVE WARD DRIVE

Poindexter & Daniel Buildings Conway Regional Medical Park



GREG NABHOLZ

O: 501.505.5720

C: 501.329.4468

greg_nabholz@nabprop.com

Nabholz Properties | 700 Front Street | Suite 101 | Conway, AR 72032 | 501.505.5720 | nabprop.com

Nabholz Properties Inc. represents the owner of the property represented herein. Although all information furnished regarding property for sale, rental, or financing is from sources deemed reliable, such information has not been verified and no express representation is made nor is any to be implied as to the accuracy thereof and it is submitted subject to errors, omissions, change of price, rental or other conditions, prior sale, lease or financing, or withdrawal without notice.



CONWAY, ARKANSAS
2425 DAVE WARD DRIVE

Banister-Lieblong Clinic Conway Regional Medical Park



GREG NABHOLZ

O: 501.505.5720

C: 501.329.4468

greg_nabholz@nabprop.com

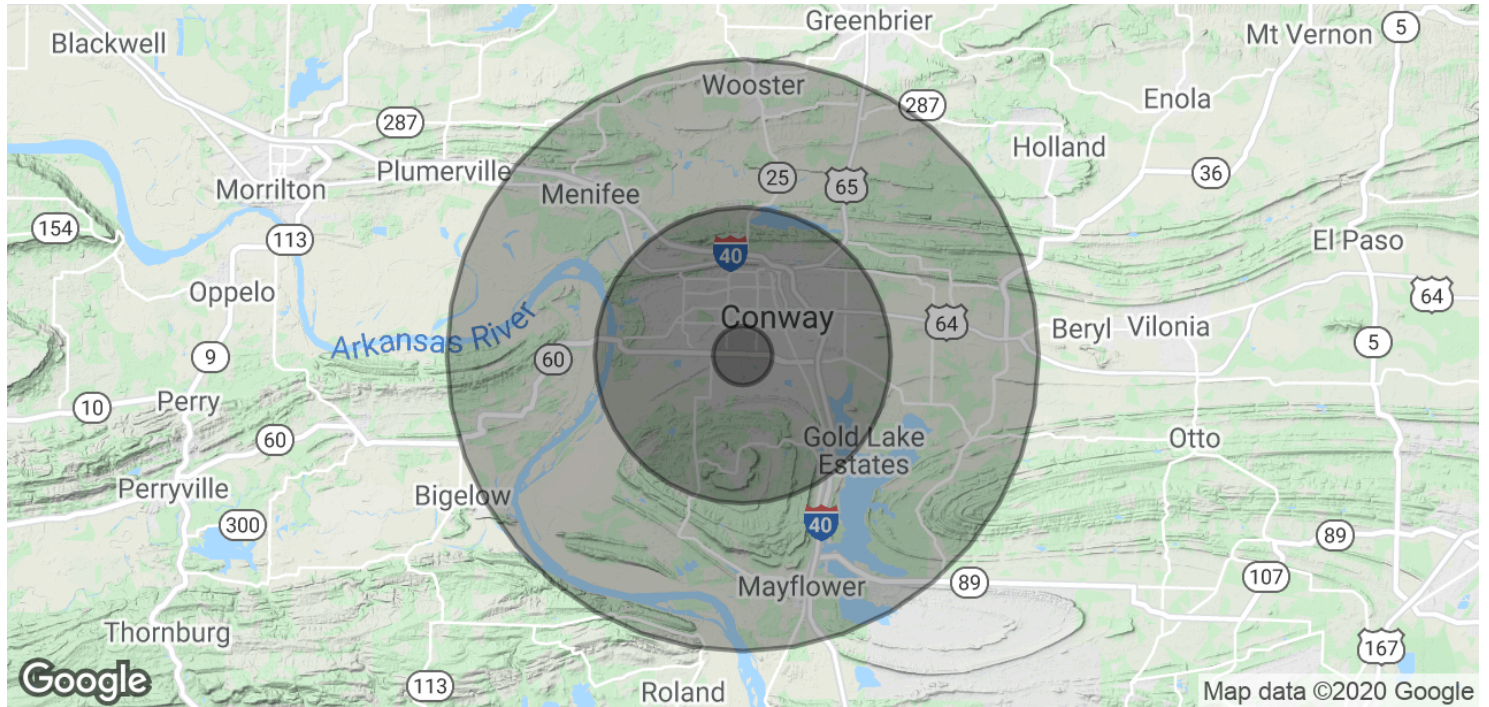
Nabholz Properties | 700 Front Street | Suite 101 | Conway, AR 72032 | 501.505.5720 | nabprop.com

Nabholz Properties Inc. represents the owner of the property represented herein. Although all information furnished regarding property for sale, rental, or financing is from sources deemed reliable, such information has not been verified and no express representation is made nor is any to be implied as to the accuracy thereof and it is submitted subject to errors, omissions, change of price, rental or other conditions, prior sale, lease or financing, or withdrawal without notice.



CONWAY, ARKANSAS
2425 DAVE WARD DRIVE - DANIEL BUILDING

Medical Office Space For Lease In Conway Regional Medical Park Daniel Building



POPULATION	1 MILE	5 MILES	10 MILES
Total Population	4,966	65,981	97,509
Average age	21.7	28.0	30.8
Average age (Male)	21.3	27.3	29.9
Average age (Female)	22.2	28.8	31.7

HOUSEHOLDS & INCOME	1 MILE	5 MILES	10 MILES
Total households	1,439	24,777	36,899
# of persons per HH	3.5	2.7	2.6
Average HH income	\$61,033	\$58,541	\$59,417
Average house value	\$116,908	\$130,499	\$126,218

* Demographic data derived from 2010 US Census

GREG NABHOLZ

O: 501.505.5720
C: 501.329.4468
greg_nabholz@nabprop.com

Nabholz Properties | 700 Front Street | Suite 101 | Conway, AR 72032 | 501.505.5720 | nabprop.com

Nabholz Properties Inc. represents the owner of the property represented herein. Although all information furnished regarding property for sale, rental, or financing is from sources deemed reliable, such information has not been verified and no express representation is made nor is any to be implied as to the accuracy thereof and it is submitted subject to errors, omissions, change of price, rental or other conditions, prior sale, lease or financing, or withdrawal without notice.

