

Site No. : 1532

Site Name : SUNSET MALL

Location : PORTLAND, OR

Date : 07.11.13

Drawn By : SN

# Lease Outline Drawing

NOTE: DIMENSIONS AND CONDITIONS SHOWN ARE A GRAPHIC REPRESENTATION OF THE PROPERTY. SOME EXISTING INTERIOR TENANT IMPROVEMENTS ARE NOT SHOWN. IT IS THE RESPONSIBILITY OF THE TENANT OR HIS AGENT TO FIELD VERIFY ALL DIMENSIONS AND CONDITIONS PRIOR TO DESIGN AND CONSTRUCTION OF TENANT IMPROVEMENTS. THIS DRAWING HAS BEEN ELECTRONICALLY TRANSMITTED.

**±6,175 sf**

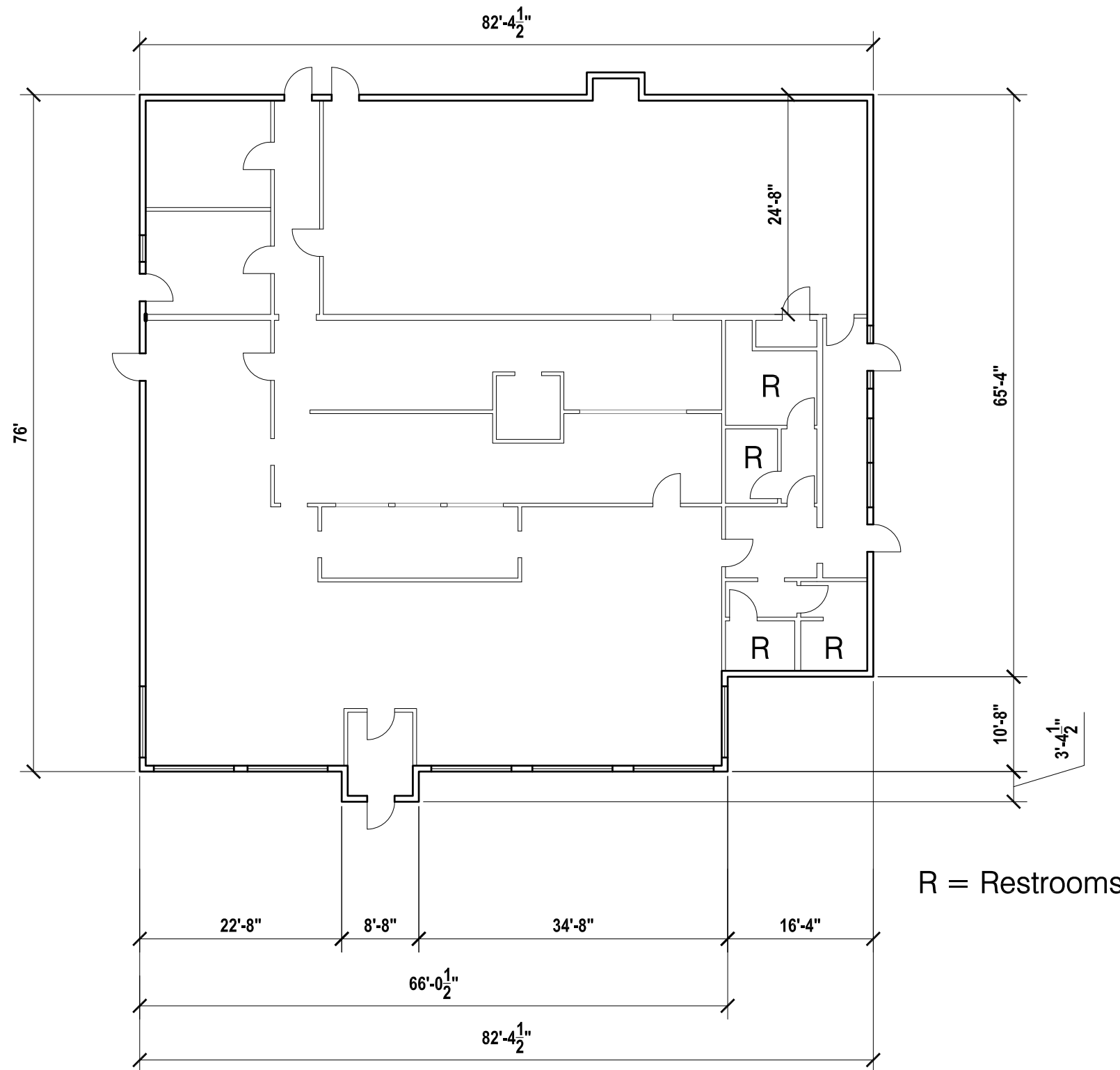
Gross Leasable Area

### ZONING

	CHECKED	NEEDS REVIEW	NOT CHECKED
MUNICIPAL	Zone		
	Use		
	Setbacks		
	Bulk		
ESMIS	Landscape		
	Utility		
	Traffic		
	Leasholds		
SITE	Traffic		
	Retention		
	Floodplain		
UTILITIES	Water		
	Gas		
	Sanitary		
	Electric		

The information presented herein is intended for use by Kimco Realty Corporation, for the purposes of schematic planning only and should not be used as a construction document. Owner, contractor and /or tenant are responsible to verify all dimensions and conditions prior to permit or construction. This information represents a preliminary interpretation of various issues as related to the site under review, and should not be considered a comprehensive report. Information may have been obtained verbally or from other sources including the internet. No testing, surveying, or on-site investigations have been performed as part of this work.

1532\_LOD\_13535-3



### NOTES:

1. Plan and dimension data derived from archive drawings provided by Kimco realty.
2. All interior partitions shown to approximate locations and should be verified in field.



### EXISTING DEMISING PLAN

SCALE: 1" = 15.00'

