



**THE SANTAN**  
NWC ALMA SCHOOL ROAD & LOOP 202

**MIKE GARLICK, SIOR** | Executive Managing Director | 602.952.3825 | mgarlick@ngkf.com  
**MIKE MCQUAID** | Senior Managing Director | 602.952.3824 | mmcquaid@ngkf.com  
**JIMMY HOSELTON** | Associate | 602.952.3862 | jimmy.hoselton@ngkf.com  
**JANEL WANGSNES** | Brokerage Services Specialist | 602.952.3860 | jwangsness@ngkf.com



**JF MCKINNEY & ASSOCIATES**  
OF ARIZONA, LLC





**THREE STORY  
CLASS "A" OFFICE**  
IN A CAMPUS STYLE SETTING



**±178,000  
SQUARE FEET**  
PHASE I OF A  
462,000 SF PROJECT



**ON-SITE  
AMENITIES**  
INCLUDING RETAIL, FITNESS  
CENTER & COLLABORATION PATIO



**TONS OF NEARBY  
RETAIL AMENITIES**  
INCLUDING CHANDLER FASHION  
CENTER & DOWNTOWN CHANDLER



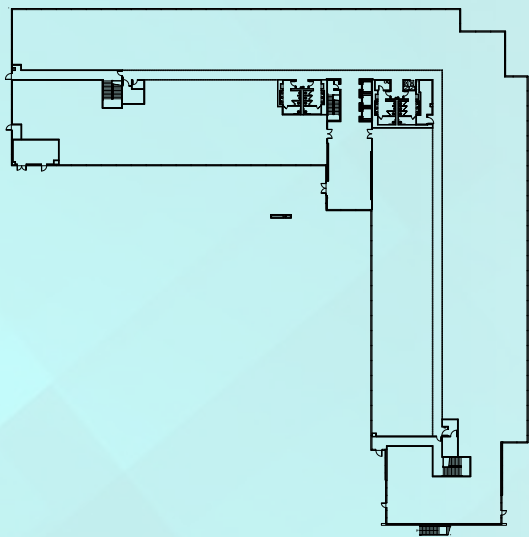
**ALONG LOOP 202  
SAN TAN FREEWAY**  
WITH EXCELLENT VISIBILITY



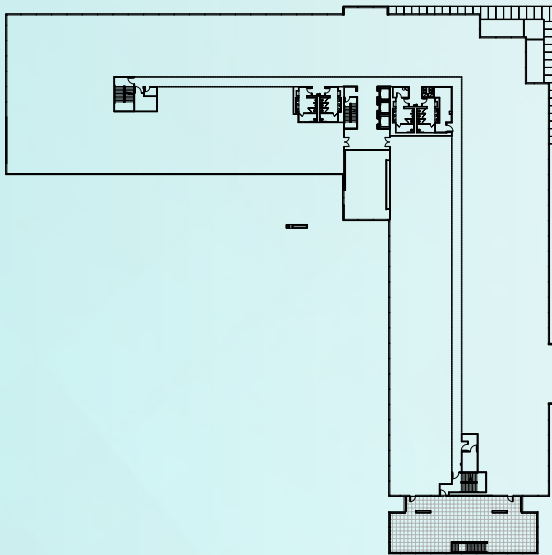
**5.0 / 1000 SF  
PARKING RATIO**  
EXPANDABLE TO 6.0/1000 SF



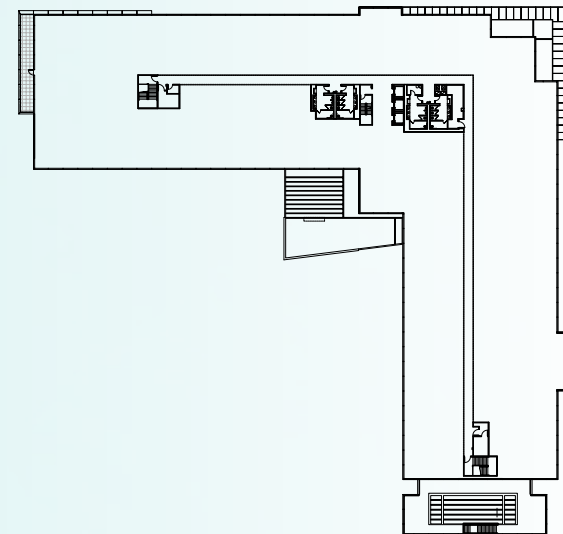




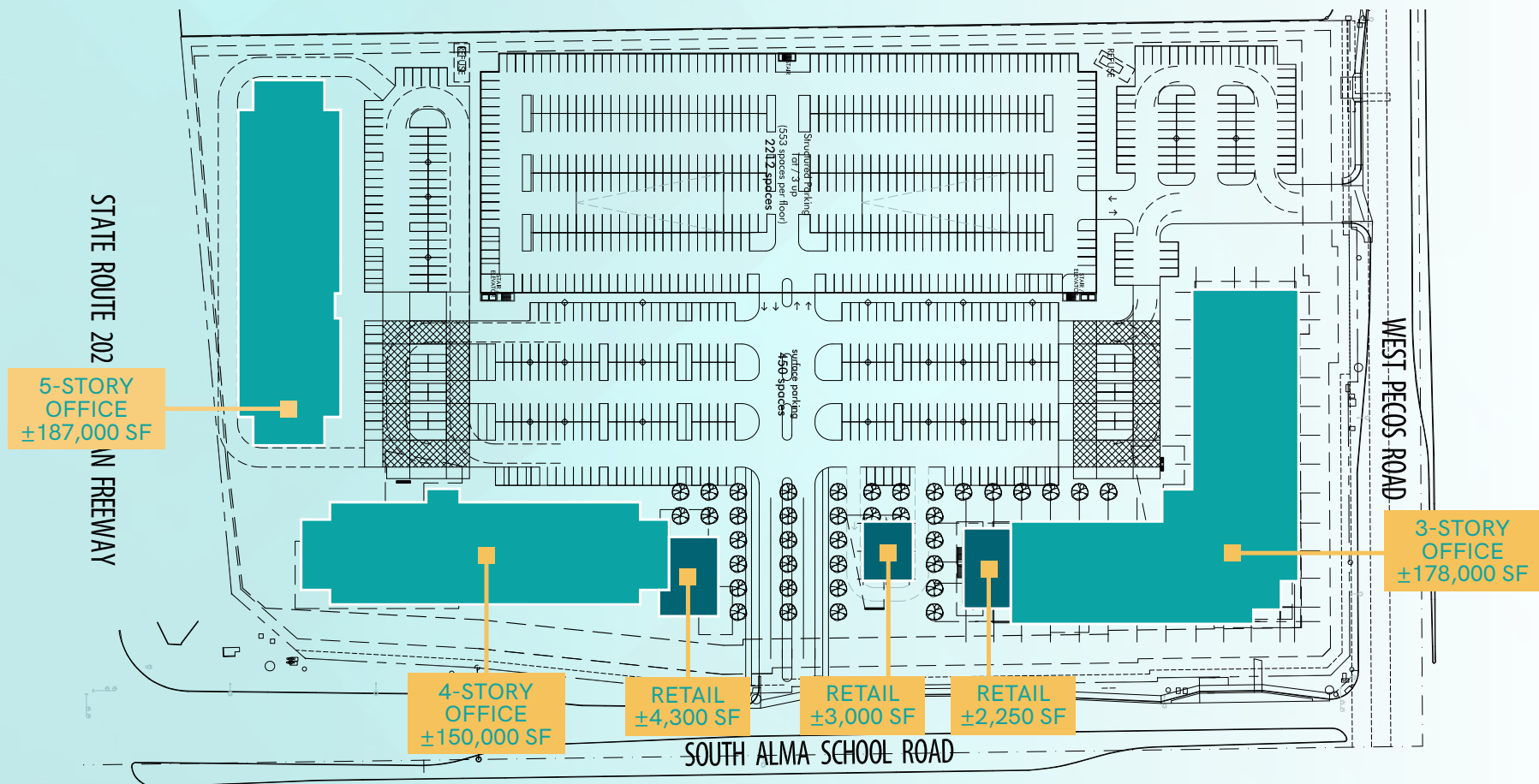
1ST FLOOR: ±59,500 GSF



2ND FLOOR: ±59,500 GSF



3RD FLOOR: ±59,500 GSF





**NWC ALMA SCHOOL ROAD & LOOP 202**

**JF MCKINNEY & ASSOCIATES**  
OF ARIZONA, LLC



**MIKE GARLICK, SIOR** | Executive Managing Director | 602.952.3825 | mgarlick@ngkf.com

**MIKE MCQUAID** | Senior Managing Director | 602.952.3824 | mmcquaid@ngkf.com

**JIMMY HOSELTON** | Associate | 602.952.3862 | jimmy.hoselton@ngkf.com

**JANEL WANGSNESS** | Brokerage Services Specialist | 602.952.3860 | jwangsness@ngkf.com