








456 Johnson Avenue



Building Features

-  Free shared conference rooms
-  For existing Manhattan or out of state tenants we are REAP
-  ELIGIBLE (Relocated Employees Assistance Program)
-  Multiple security cameras
-  Automatic freight elevator
-  24/7/365 Key fob tenant access
-  Intercom for guests, calls tenant's cell or landline

Commercial Space

2nd Floor – 1,000 RSF

- Prebuilt unit available

3rd Floor – 5,695 RSF

- Prebuilt units available from 1,027 - 2,901 RSF

4th Floor – 1,874 RSF

- Prebuilt unit available


EXCLUSIVE LEASING AGENT:


BEN WALLER | Licensed Associate Real Estate Broker
212-400-9515 | bwaller@absre.com


SCOTT MCANNEY | Licensed Real Estate Salesperson
212-400-2341 | smcanney@absre.com





Office Features

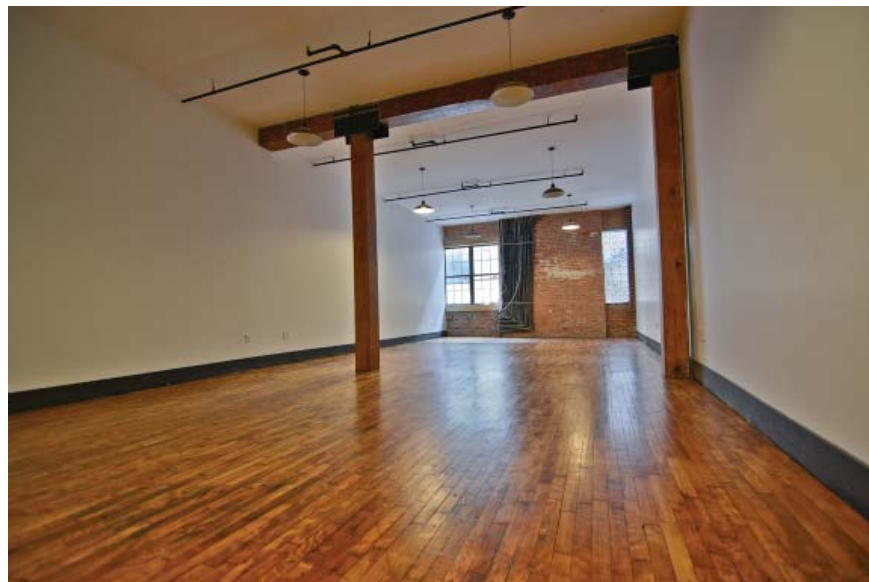
 All new electric, plumbing, windows, elevator, cabling

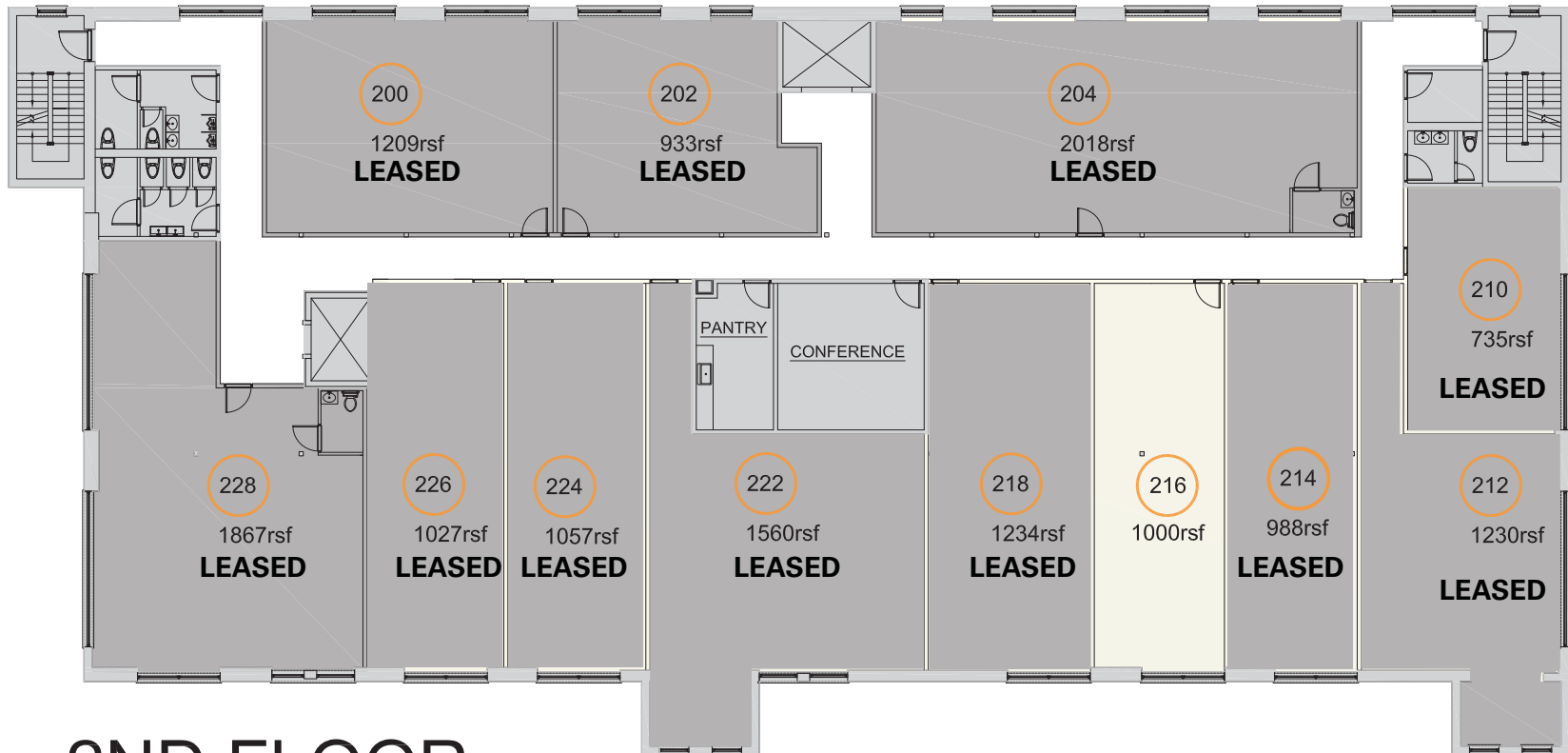
 Restored wood floors

 Tenant controlled heating, ventilating and cooling

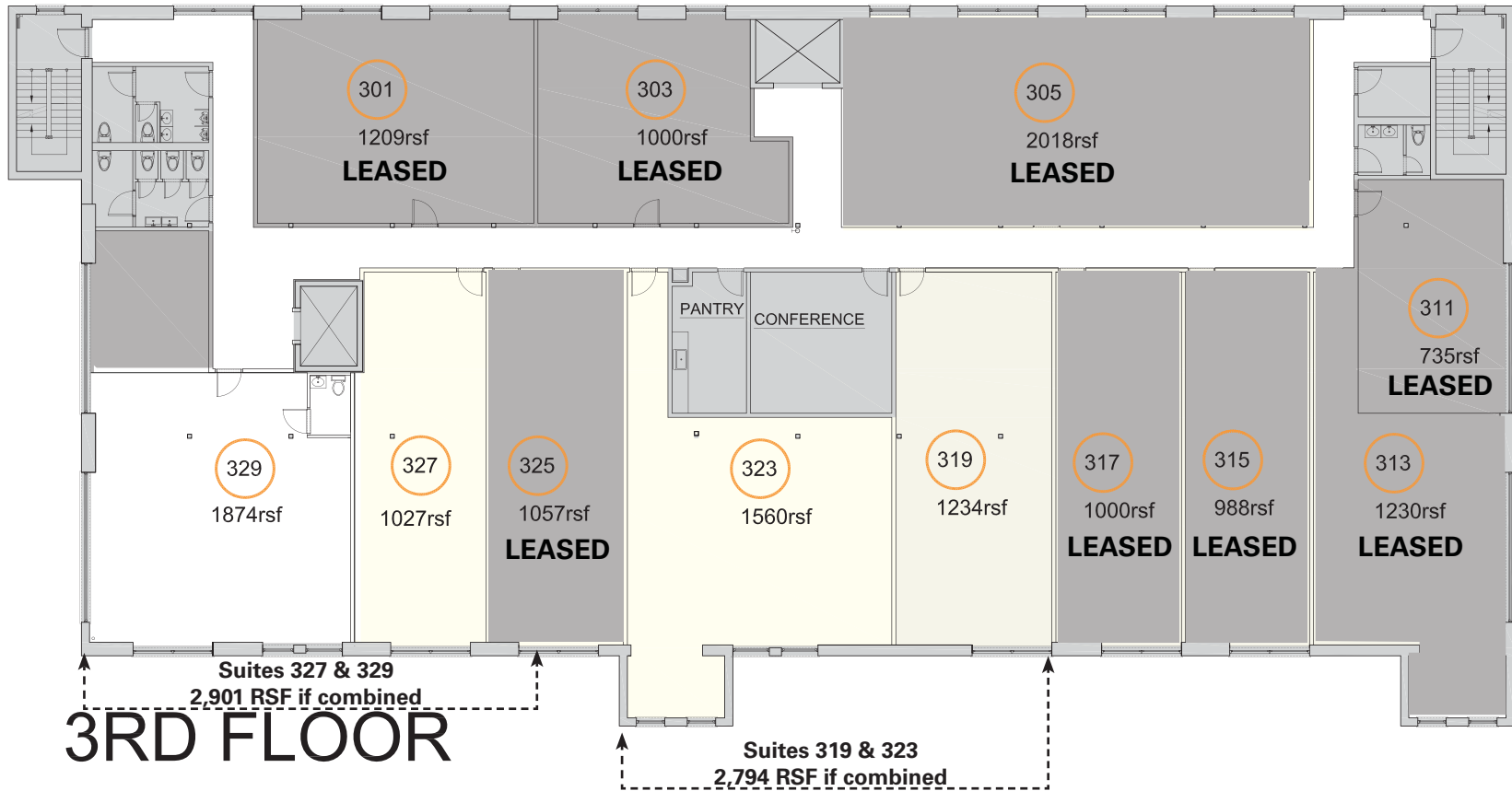
 Light and very bright spaces

 Verizon fios and Spectrum (formerly Time Warner Cable) service





2ND FLOOR





4TH FLOOR

Paper Mill | 456 Johnson Avenue, Brooklyn, NY - Retail Area Map

FOOD & DRINK

- 1 El Cortez
- 2 Roberta's
- 3 Falansai
- 4 Terra Firma
- 5 Forrest Point
- 6 Swallow Cafe
- 7 Tutu's
- 8 Momo Sushi Shack
- 9 983
- 10 Faro
- 11 Fine & Raw
- 12 Supercrown Coffee Roasters
- 13 Sea Wolf
- 14 Ichiran - Ramen
- 15 Guadalupe Inn
- 16 Cape House Clamshack

HOTELS

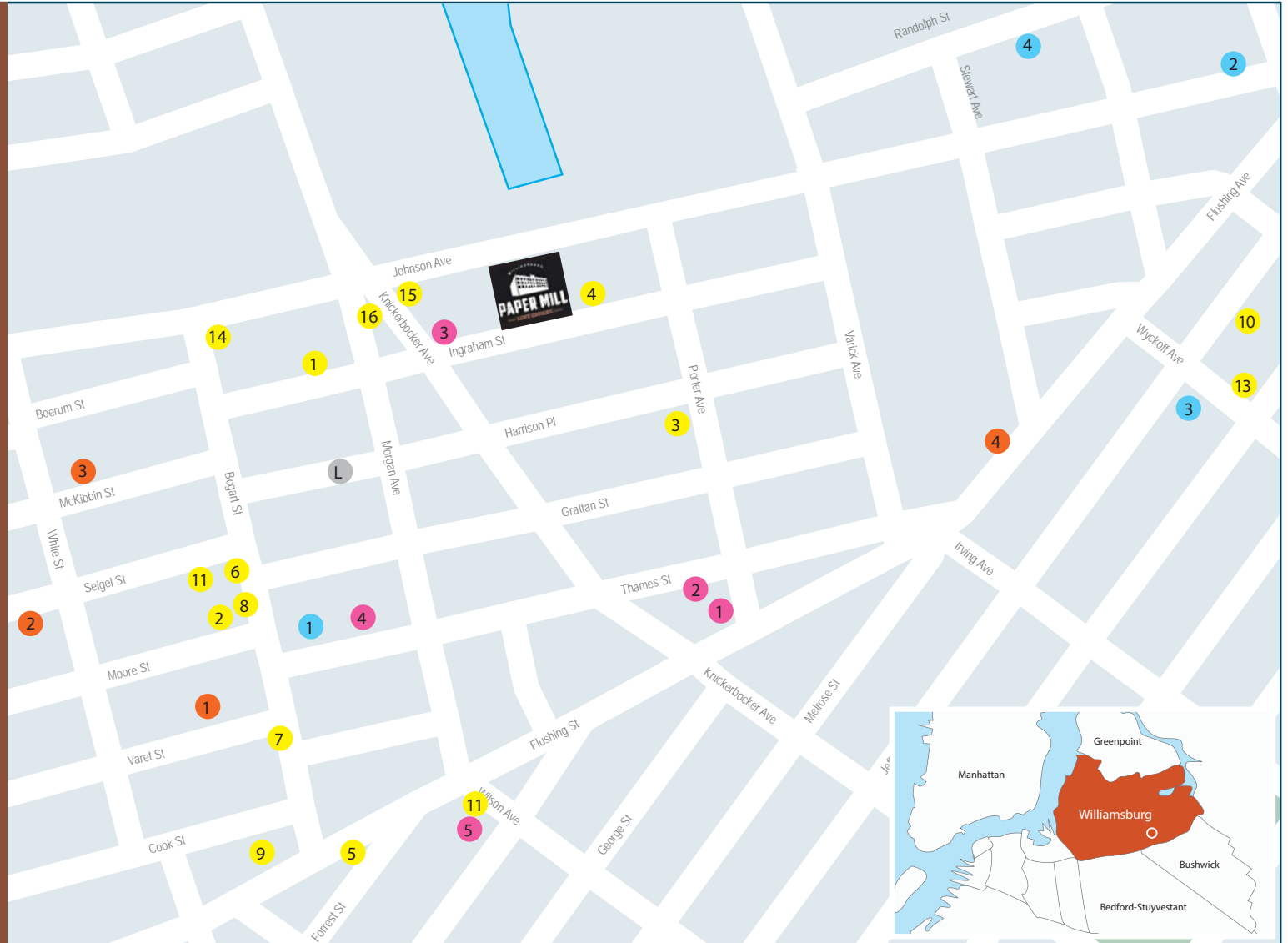
- 1 The New York Loft Hostel
- 2 Bushwick Hotel
- 3 100 Key Hotel @ 71 White St
- 4 140 Key Hotel @ 27 Stuart Ave

MUSIC & ENTERTAINMENT

- 1 Syndicated Bar Theater Kitchen
- 2 Elsewhere (Formerly Glasslands)
- 3 House of Yes
- 4 Bossa Noval Civic Club

LIFESTYLE

- 1 Bushwick Food Coop
- 2 Loom Yoga Center
- 3 Luhring Augustine Gallery
- 4 Tomahawk Salon
- 5 Bushwick Crossfit



EXCLUSIVE LEASING AGENT:

BEN WALLER | Licensed Associate Real Estate Broker
212-400-9515 | bwaller@absre.com

SCOTT MCANNEY | Licensed Real Estate Salesperson
212-400-2341 | smcanney@absre.com

ABS Partners Real Estate, LLC • 200 Park Avenue South, New York, NY 10003 • T 212.400.6060 • F 212.400.6099 www.absre.com

"All information is from sources deemed reliable but is subject to errors or omissions of any magnitude, withdrawal from market, or changes in terms, all without notice. Brokers employment and payment only by written agreement."

