



OFFICE BUILDING FOR LEASE

BEACH MUNICIPAL FEDERAL CREDIT UNION

4164 VIRGINIA BEACH BOULEVARD, VIRGINIA BEACH, VA 23452



BEACH MUNICIPAL FEDERAL CREDIT UNION

4164 VIRGINIA BEACH BOULEVARD, VIRGINIA BEACH, VA 23452

PROPERTY OVERVIEW



OFFERING SUMMARY

Available SF:	1,100 SF
Lease Rate:	\$17.00 SF/yr (Full Service)
Building Size:	22,338 SF

AVAILABLE SPACES **SF**

Suite 100 (Available 1/1/2020)	1,100 SF
--------------------------------	----------

PROPERTY OVERVIEW

This two-story, 18,408-square-foot office building is conveniently located on Virginia Beach Boulevard, near Virginia Beach's Central Business District at Town Center.

PROPERTY HIGHLIGHTS

- Free, on-site parking.
- Easy access to anywhere in Hampton Roads via I-264 and minutes to the Norfolk International Airport.

DEMOGRAPHICS

	1 Mile	3 Miles	5 Miles
Total Households:	5,815	46,545	112,119
Total Population:	13,448	118,218	291,822
Average HH Income:	\$66,577	\$70,650	\$74,996

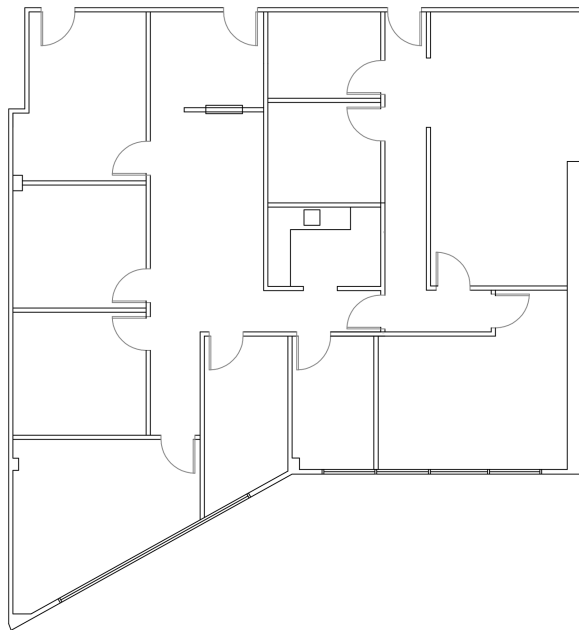
BEACH MUNICIPAL FEDERAL CREDIT UNION

4164 VIRGINIA BEACH BOULEVARD, VIRGINIA BEACH, VA 23452

FLOOR PLANS



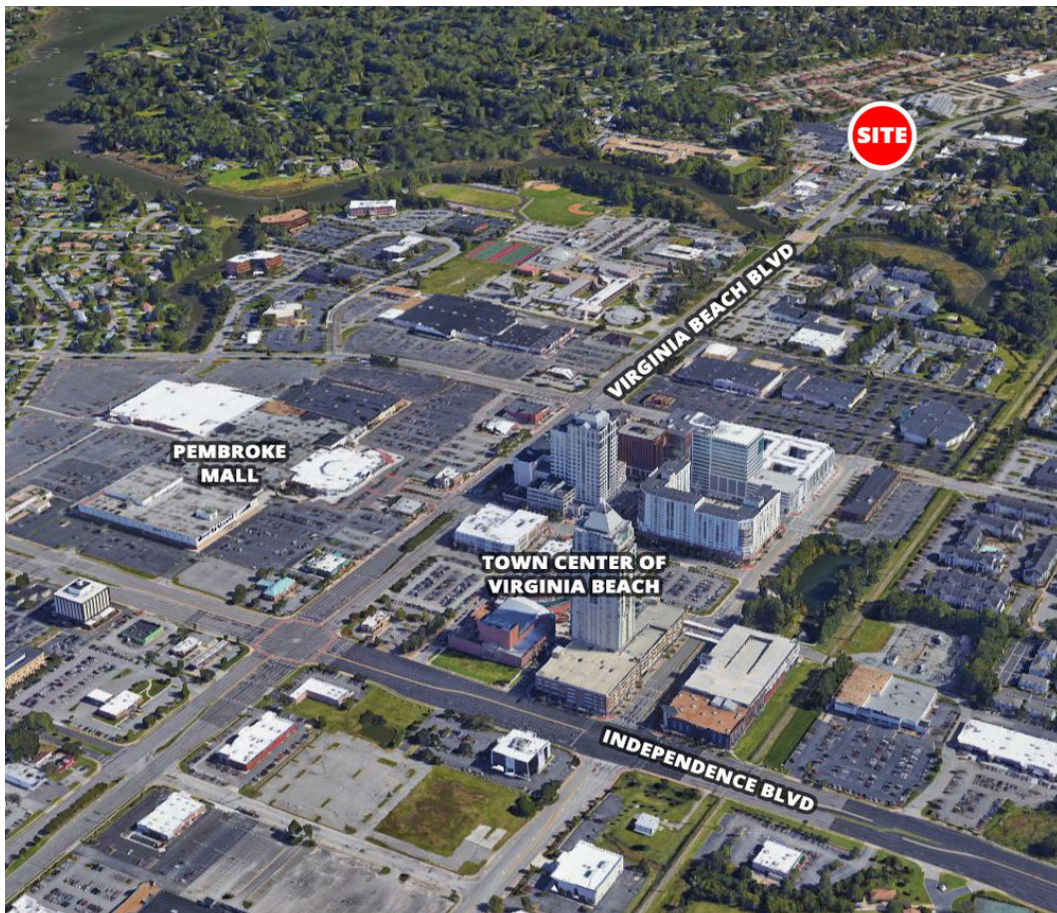
101 SUITE 101
1,978 SQUARE FEET



200 SUITE 200
2,428 SQUARE FEET



Elizabeth C. Paasch
Assistant Vice President
757.333.4322
Epaasch@divaris.com



The information contained herein should be considered confidential and remains the sole property of Divaris Real Estate, Inc. at all times. Although every effort has been made to ensure accuracy, no liability will be accepted for any errors or omissions. Disclosure of any information contained herein is prohibited except with the express written permission of Divaris Real Estate, Inc.