

SUMMARY



LEASE SUMMARY

LEASE RATE: \$8.50 NNN

AVAILABLE SUITES

Suite 101 3,471 SF

PROPERTY INFORMATION

Plenty of parking for each suite
Overhead doors
Warehouse storage space

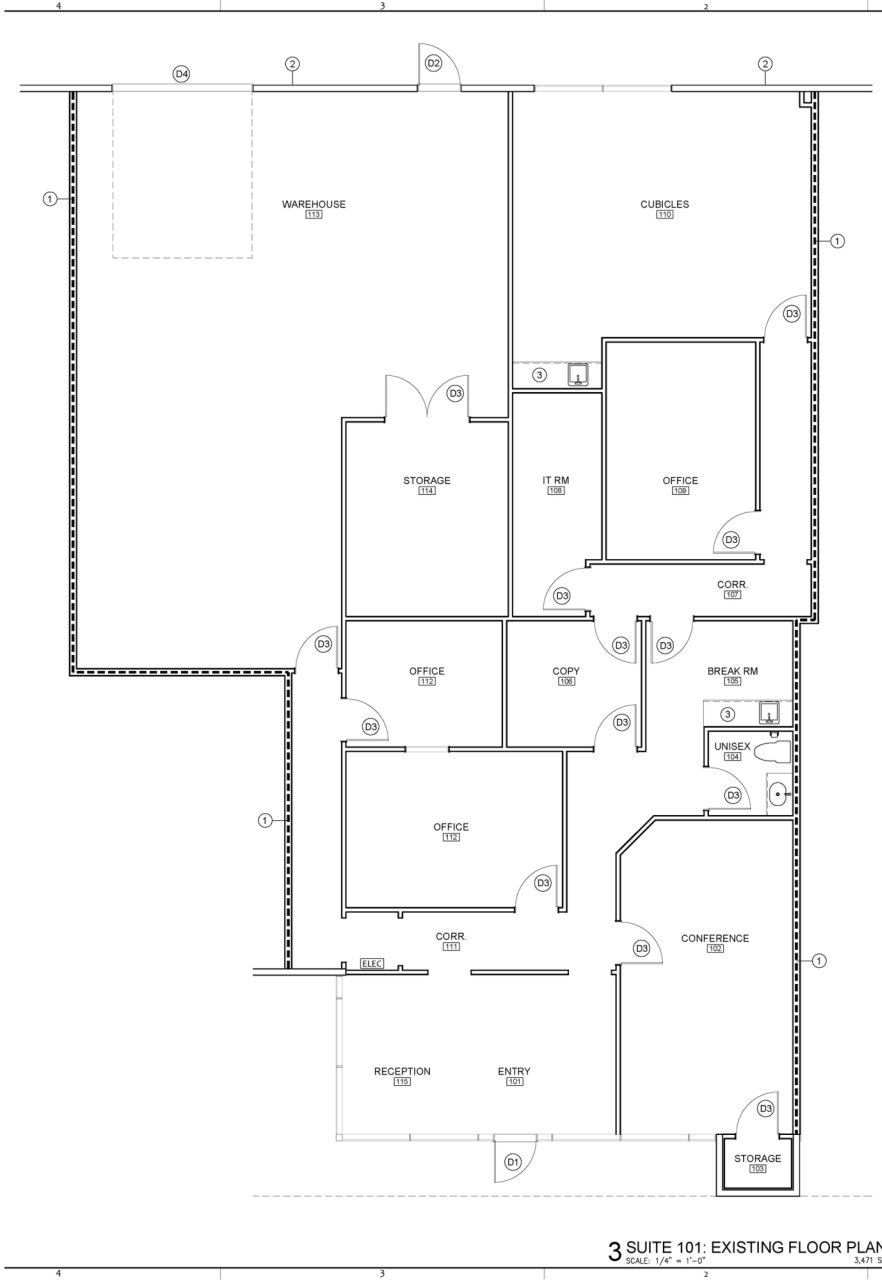
LOCATION

12 min. from the Port of Corpus Christi
8 min. from CC International Airport
6 min. from the refineries

For more information, please contact us at:
P: 361.585.0300
E: INFO@STONEWATERPROPERTIES.COM

FLOOR PLANS

#101



GENERAL NOTES:

- CONTRACTOR TO FIELD VERIFY ALL EXISTING CONDITIONS AND NOTIFY ARCHITECT OF ANY DISCREPANCY, P.T.C.

LEGEND:

- EXTERIOR WALL: MASONRY TILT WALL PANEL
- EXISTING DEMISING WALL - IHR RATED PARTITION: 6" METAL STUDS w/ 5/8" GYP. BOARD BOTH SIDES
- EXISTING INTERIOR WALL - NON-RATED PARTITION: 5 5/8" METAL STUDS w/ 5/8" GYP. BOARD BOTH SIDES

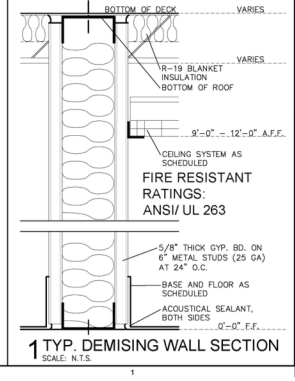
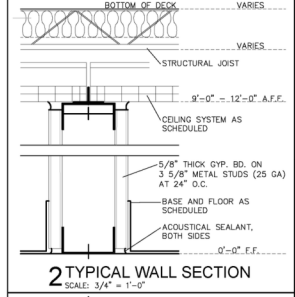
LEGEND:

- D1 3'-0" x 7'-0" GLASS DOOR
- D2 3'-0" x 7'-0" H.M. DOOR
- D3 3'-0" x 7'-0" H.C. DOOR
- D4 10'-0" x 12'-0" OVERHEAD DOOR

KEY NOTES:

- EXISTING DEMISING WALL
- EXISTING MASONRY TILT PANEL
- MILLWORK CABINETS
- STRUCTURAL COLUMN
- AHU

ELECTRICAL:
200 AMP. SERVICE



ACS architecture | asbuilts
multifamily hospitality industrial commercial
1322 Space Park Drive
Suite B-122
Houston • Texas 77058
Info@acs-architecture.com
281.767.9000 voice
Firm Registration No. BR2307

STONEWATER PROPERTIES
ACS.2020.0819

225 S ENTERPRIZE PKWY
CORPUS CHRISTI, TX 78405

© ACS architecture | asbuilts
2021 ACS ARCHITECTURE, LLC DOCUMENTS AND INSTRUMENTS OF SERVICE ARE GIVEN IN CONFIDENCE AND REMAIN THE PROPERTY OF ACS ARCHITECTURE, LLC. THIS DOCUMENT AND THE INFORMATION CONTAINED HEREIN MAY NOT BE DUPLICATED, USED, OR DISCLOSED WITHOUT WRITTEN CONSENT OF ACS ARCHITECTURE, LLC. THIS IS AN UNPUBLISHED SURVEY DOCUMENT OFFERED BY ACS ARCHITECTURE, LLC. IT IS SUBMITTED FOR YOUR PERSONAL USE IN CONNECTION WITH THE CONTRACTED PROJECT PERFORMED BY ACS ARCHITECTURE, LLC. ALL OR ANY PART OF THE SURVEY DOCUMENT (EXCEPTING REGISTERED TRADEMARKS) REMAINS THE PROPERTY OF ACS ARCHITECTURE, LLC.

Revision Date: _____

Issue/Date: _____

ASBUILT FLOOR PLAN 09-09-2021

A2.01
EXISTING FLOOR PLAN
SUITE 101
DOOR SCHEDULE
TYPICAL WALL SECTIONS
GENERAL INFORMATION

For more information, please contact us at:
P: 361.585.0300
E: INFO@STONEWATERPROPERTIES.COM



SUITE PHOTOS

#101



For more information, please contact us at:
P: 361.585.0300
E: INFO@STONEWATERPROPERTIES.COM

SUITE PHOTOS

#101



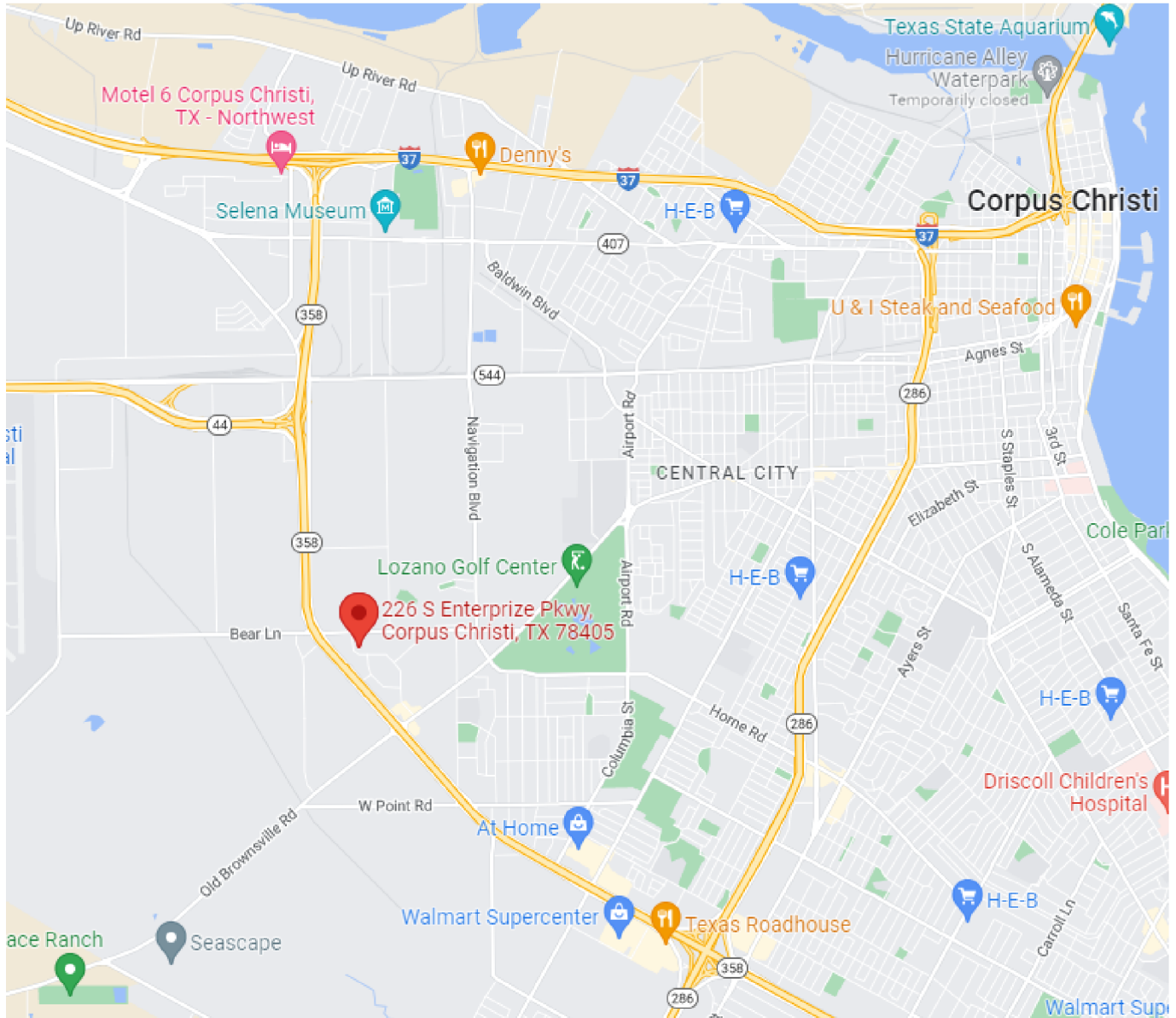
For more information, please contact us at:
P: 361.585.0300
E: INFO@STONEWATERPROPERTIES.COM

PROPERTY PHOTOS



For more information, please contact us at:
P: 361.585.0300
E: INFO@STONEWATERPROPERTIES.COM

LOCATION



For more information, please contact us at:
P: 361.585.0300
E: INFO@STONEWATERPROPERTIES.COM

