

FOR SALE | LEASE 1,800 SF

Anaheim Hills Corporate Park

4879 E. La Palma Avenue, Unit 203, Anaheim, CA

Voit

REAL ESTATE SERVICES

Highly Upgraded Industrial / Office Condo



Property Features:

Upgraded stylish office improvements with designer lighting, air conditioned and carpeted warehouse.

- Part of prestigious Anaheim Hills Corporate Park
- Large conference room with glass and double door entry and built in white board
- 3 private offices
- Coffee area with built in granite counter tops, sink, and garbage disposal
- One (1) handicapped restroom
- One (1) roll up door
- Warehouse area is upgraded with office quality lighting and carpeting (this area is perfect for low cost "Creative" office use)
- 100% Air Conditioned
- 3:1,000 parking, in common
- New roof & air conditioning in 2005
- Building was freshly painted in 2011
- 100 amp power
- Fully sprinklered
- Close to 91, 57, 241, 71, 55 Freeways
- Available Now
- Low Monthly Association Dues of \$0.15 PSF

Jack Faris, SIOR | Senior Vice President | Lic #00912766 | 714.978.7880 | jfaris@voitco.com

3500 W. Orangewood Ave., Orange, CA 92868 • 714.978.7880 • 714.978.9431 Fax • Lic #01333376 | www.voitco.com

Real People. Real Solutions.®

FOR SALE | LEASE 1,800

Anaheim Hills Corporate Park

4879 E. La Palma Avenue, Unit 203, Anaheim, CA

Site Map



Jack Faris, SIOR

Senior Vice President

Lic #00912766

714.978.7880

jfaris@voitco.com

Voit

REAL ESTATE SERVICES

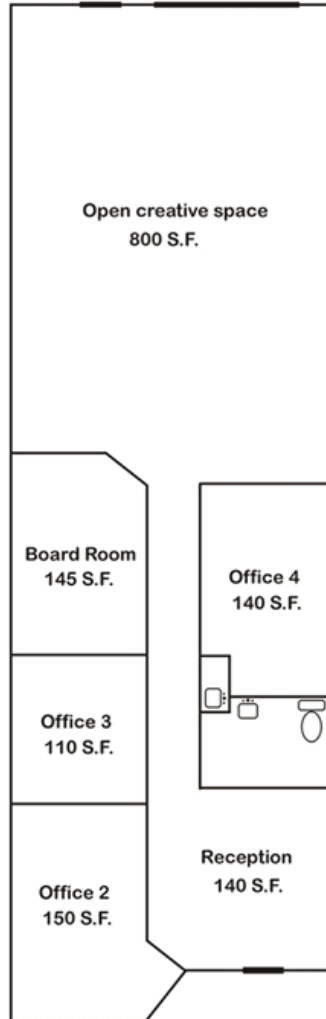
3500 W. Orangewood Ave., Orange, CA 92868 • 714.978.7880 • 714.978.9431 Fax • Lic #01333376 | www.voitco.com

FOR SALE | LEASE 1,800

Anaheim Hills Corporate Park

4879 E. La Palma Avenue, Unit 203, Anaheim, CA

Floor Plan



Jack Faris, SIOR

Senior Vice President

Lic #00912766

714.978.7880

jfaris@voitco.com

Voit

REAL ESTATE SERVICES

3500 W. Orangewood Ave., Orange, CA 92868 • 714.978.7880 • 714.978.9431 Fax • Lic #01333376 | www.voitco.com