

# Prologis Cobb Place

980 Cobb Place Blvd., Suite 150A

Kennesaw, GA USA 30144



## 19,205 Square Feet Industrial Space For Lease



### location

- Frontage on Cobb Place Boulevard
- Conveniently located off I-75 with great proximity to Barrett Parkway amenities.
- Close to FedEx facility

### facility

- 19,205 sf available
- 147,262 sf in building size
- 1,736 sf office
- Rear load
- Six (6) dock high doors
- One (1) drive in door
- 24' clear height
- Tilt-up construction
- 160' Building depth
- 200 amp, 480/277 — 3 phase
- ESFR



**Lee & Associates**  
Billy Snowden  
bsnowden@lee-associates.com  
ph +1 404.442.2839  
cell +1 770.354.5981  
fax +1 404.442.2811  
3500 Lenox Road, Suite 200  
Atlanta, GA 30326 USA

**Lee & Associates**  
Tommy Hiles, SIOR  
thiles@lee-associates.com  
ph +1 404.442.2847  
cell +1 404.229.0283  
fax +1 404.442.2811  
3500 Lenox Road, Suite 200  
Atlanta, GA 30326 USA

**Prologis**  
Ryan Hoyt  
rhoyt@prologis.com  
ph +1 404.760.7215  
cell +1 404.200.7737  
fax +1 404.760.7201  
3475 Piedmont Road NE, Suite 650  
Atlanta, GA 30305 USA

# Prologis Cobb Place

980 Cobb Place Blvd., Suite 150A

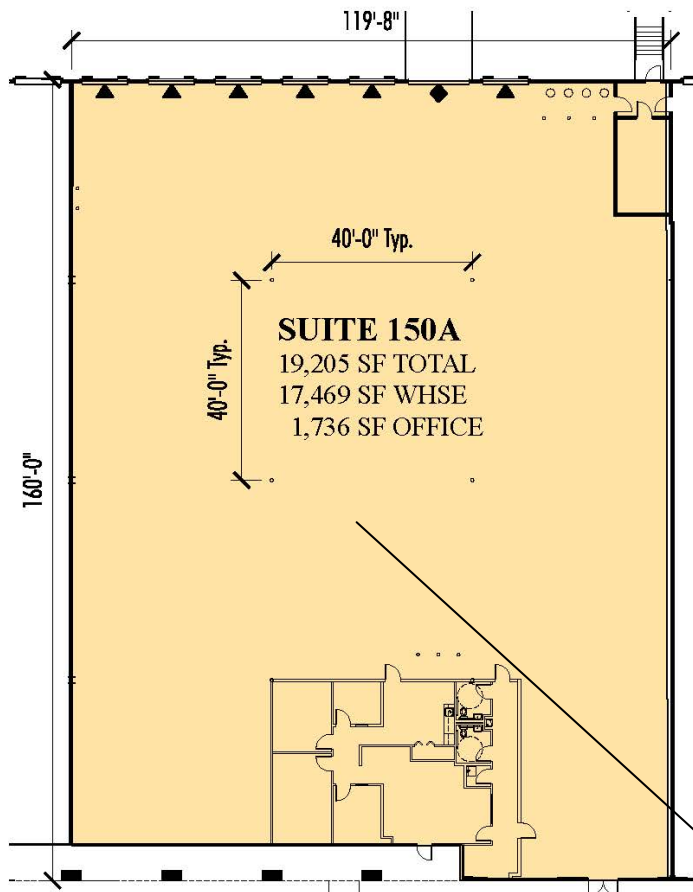
Kennesaw, GA USA 30144



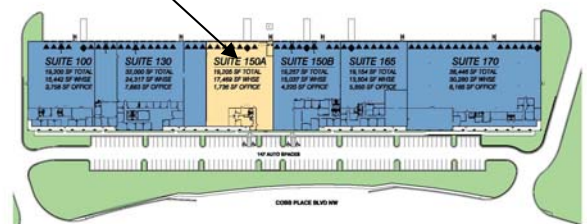
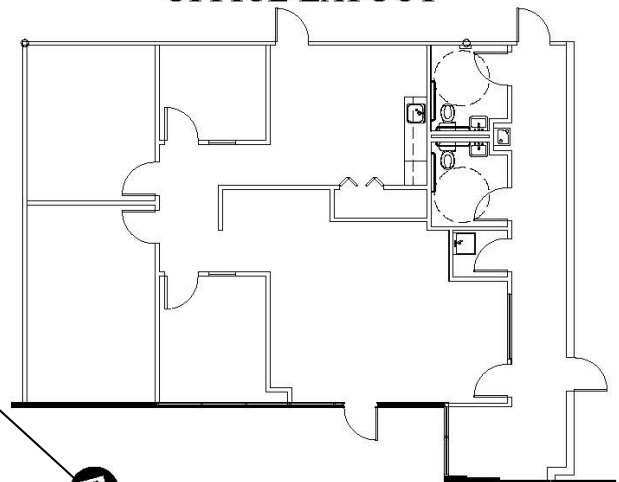
## 19,205 Square Feet Industrial Space For Lease

### LEGEND:

- ▲ DOCK DOOR
- ▲ DOCK DOOR W/LEVELER
- ◆ DRIVE-IN DOOR
- LEASED AREA
- VACANT AREA



### OFFICE LAYOUT



**Lee & Associates**  
Billy Snowden  
bsnowden@lee-associates.com  
ph +1 404.442.2839  
cell +1 770.354.5981  
fax +1 404.442.2811  
3500 Lenox Road, Suite 200  
Atlanta, GA 30326 USA

**Lee & Associates**  
Tommy Hiles, SIOR  
thiles@lee-associates.com  
ph +1 404.442.2847  
cell +1 404.229.0283  
fax +1 404.442.2811  
3500 Lenox Road, Suite 200  
Atlanta, GA 30326 USA

**Prologis**  
Ryan Hoyt  
rhoyt@prologis.com  
ph +1 404.760.7200  
fax +1 404.760.7201  
3475 Piedmont Road NE, Suite 650  
Atlanta, GA 30305

No warranty or representation, expressed or implied, is made as to the accuracy of the information contained herein, and same is submitted subject to error and omissions.