

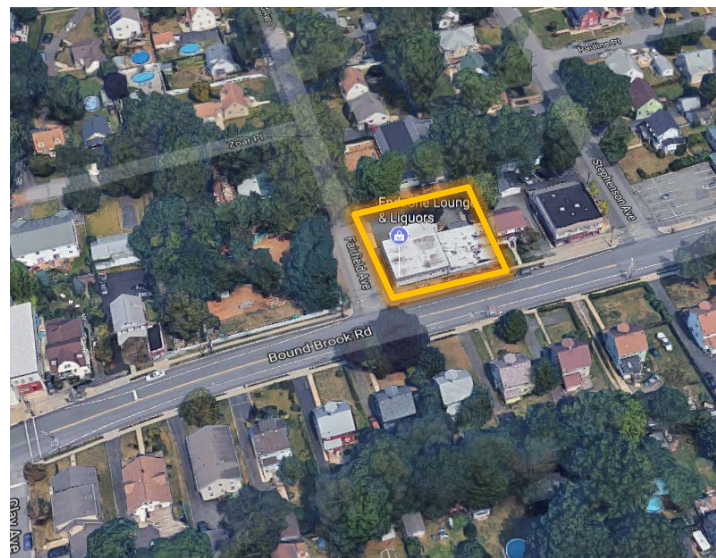


421-425 Bound Brook Rd

Middlesex, New Jersey

Property Features

- Investment Property
- Great Local Center
- Excellent Rental History
- Fully Leased
- 4 Tenant Property with Long Term Tenants
 - 2 Retail Tenants – 1st Fl
 - 2 – 2BR, 1BA Residential Apartments – 2nd Fl
- Abundant parking in rear lot
- Zoned: GB – General Business

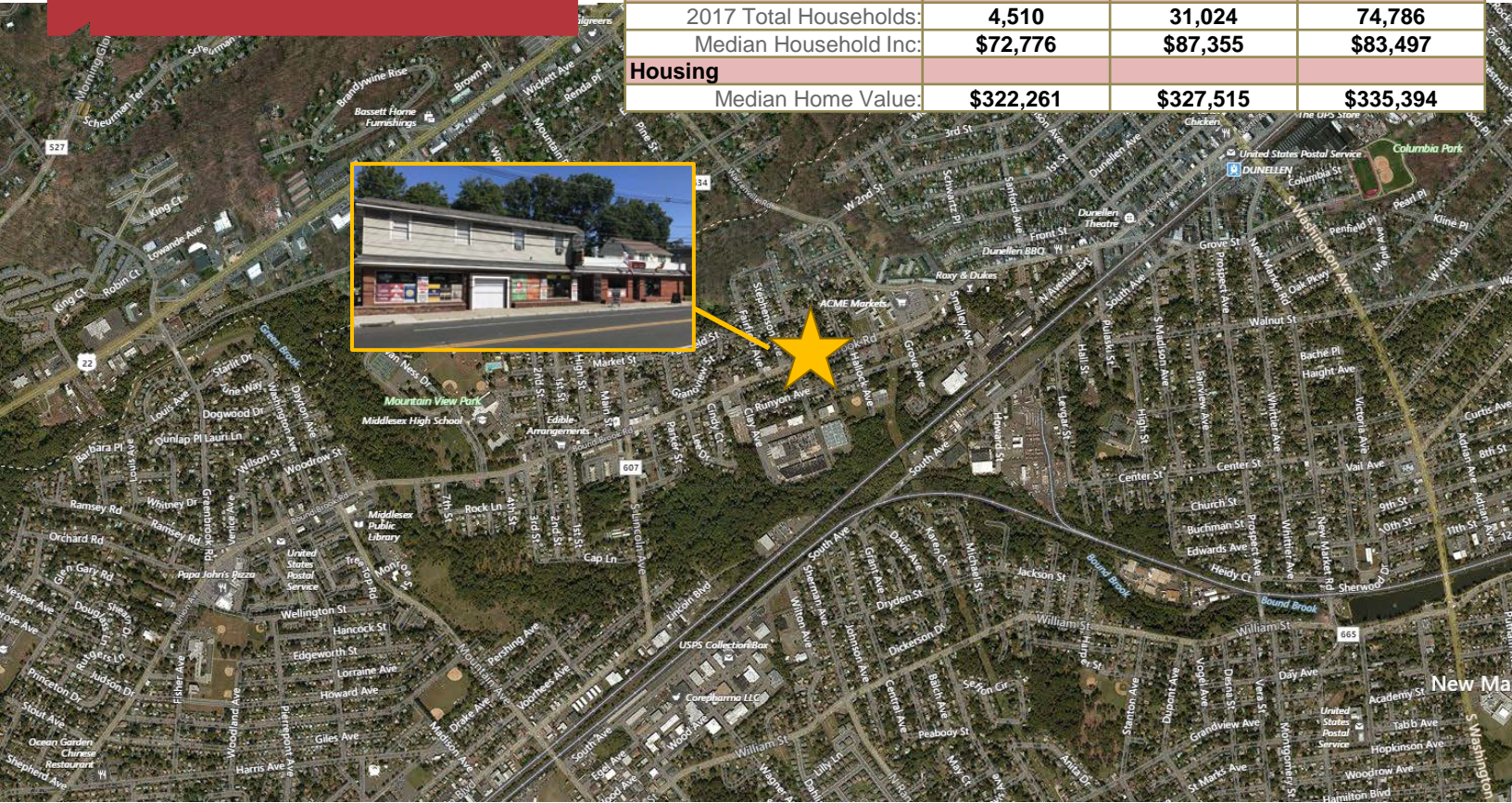


Contact **Exclusive Broker** For more information:

Jeffrey M. Jones, Senior Vice President
732 985 8921 • jjones@naidb.com

FOR SALE
421-425 Bound Brook Rd
Middlesex, NJ

Population	1 Mile	3 Mile	5 Mile
2017 Total Population:	12,880	90,642	225,438
Households			
2017 Total Households:	4,510	31,024	74,786
Median Household Inc:	\$72,776	\$87,355	\$83,497
Housing			
Median Home Value:	\$322,261	\$327,515	\$335,394



Contact Exclusive Broker For more information:

Jeffrey M. Jones
Senior Vice President
 732 985 8921 • jjones@naidb.com

NAIDiLeo-Bram & Co.
 Commercial Real Estate Services, Worldwide.

1315 Stelton Road
 Piscataway, New Jersey 08854
 732 985 3000
naidb.com