

For Lease
1,081-3,896 SF
Office Space

NAI Robert Lynn



17000 N. Dallas Parkway

Dallas, Texas 75248

Available Suites

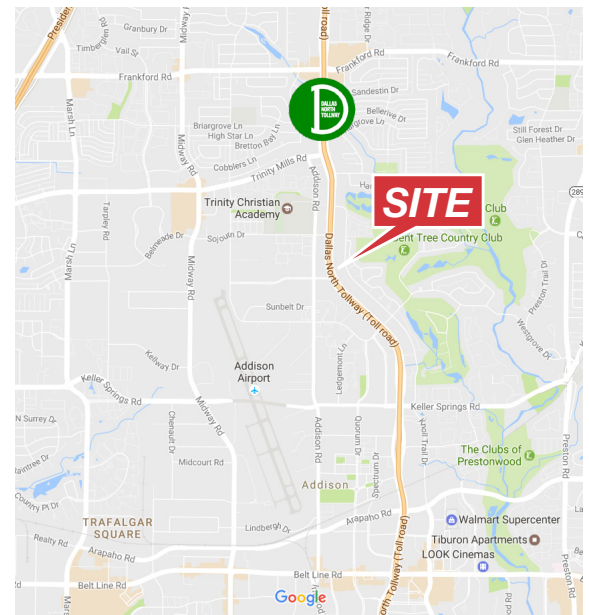
Suite 107	1,081 SF	Suite 219	1,924 SF
Suite 125	2,477 SF	Suite 220	1,929 SF
Suite 200	2,604 SF	Suite 222	1,972 SF
Suite 202	2,387 SF		

James Davis

214 256 7103 • jdavis@robertlynn.com

Tom Lynn, SIOR

214 256 7123 • tlynn@robertlynn.com



4851 LBJ Freeway 10th Floor
Dallas TX 75244
214 256 7100
nairl.com

17000 N. Dallas Pkwy.
Dallas, TX 75248



Property Features & Amenities

Great Location Off The Dallas North Tollway

Move-In Ready Suites

Covered Parking Available

Fiber Connectivity Available

Fiber Available With Speeds Up To 1000Mbps

On-Site Ownership & Management

Card Key Access

3.5:1000 Parking

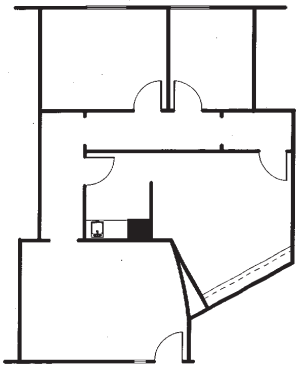
Easy Access From The Dallas N. Tollway & Knoll Trail

Building Signage Available

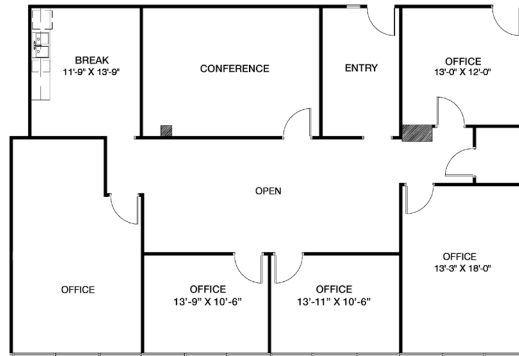
Full Service Rates



Suite 107
1,081 SF



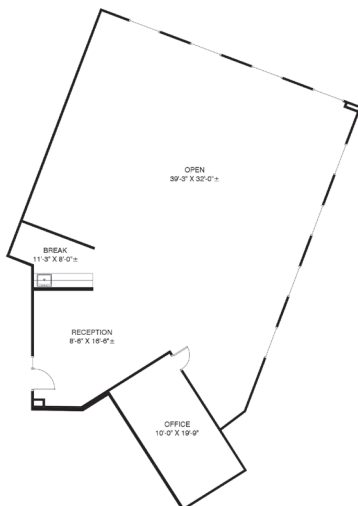
Suite 125
2,477 SF



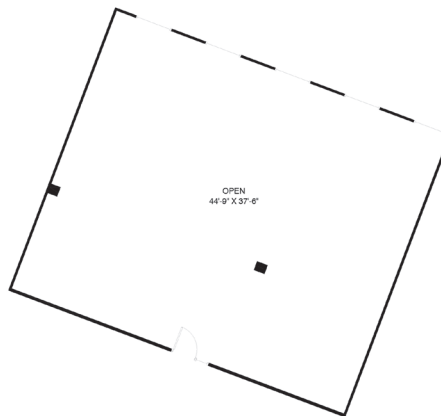
Suite 200
2,604 SF



Suite 202
2,387 SF

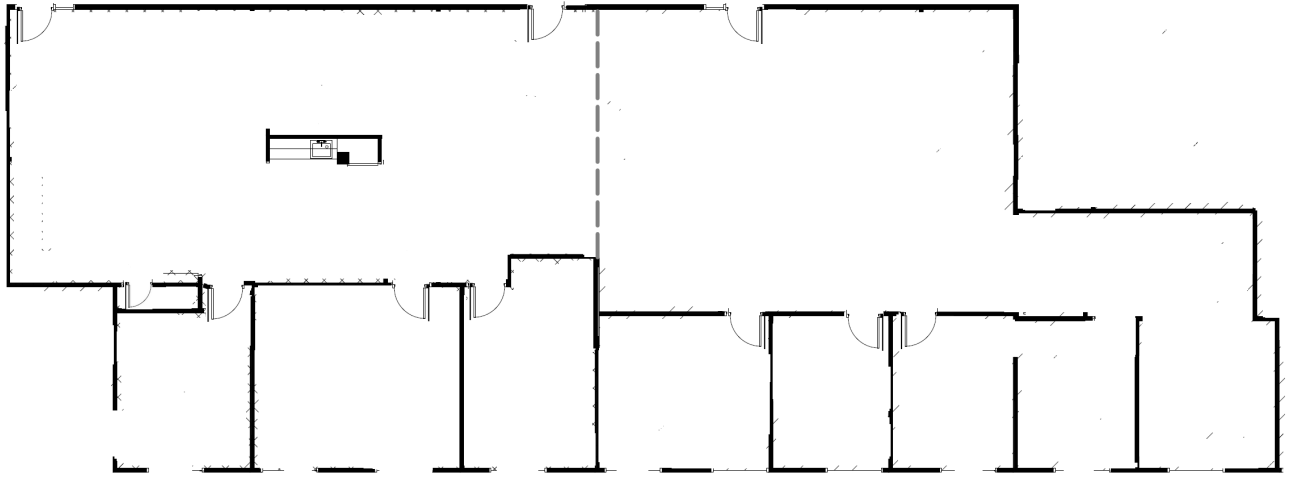


Suite 220
1,929 SF



Suite 219
1,924 SF

Suite 222
1,972 SF



NAI Robert Lynn

 **SIOR**

THE INFORMATION CONTAINED HEREIN HAS BEEN GIVEN TO US BY THE OWNER OF THE PROPERTY OR OTHER SOURCES WE DEEM RELIABLE. WE HAVE NO REASON TO DOUBT ITS ACCURACY, BUT WE DO NOT GUARANTEE IT. ALL INFORMATION SHOULD BE VERIFIED PRIOR TO PURCHASE OR LEASE.