

SCOTTDALE MULTI-FAMILY

Scottdale, Pennsylvania 15683



Scottdale Multi-Family Portfolio
10-Unit Apartment Building and Two Duplexes

**BAKER
YOUNG**
CORPORATION

SCOTSDALE MULTI-FAMILY

Scottsdale, Pennsylvania 15683

- ❖ **716 Pittsburgh Street is an 8,292 SF, 3-story, 10-unit apartment building consisting of the following:**
 - Six 2-bedroom apartments
 - Two 1-bedroom apartments
 - Two efficiency apartments
- ❖ 716 Pittsburgh Street is zoned R-2 Medium Density Residential
- ❖ 716 Pittsburgh Street Parcel ID is 30-02-02-0-041
- ❖ **319-321 S. Broadway Street is a duplex with 4 bedrooms in each unit**
- ❖ 319-321 S. Broadway Street Parcel ID is 30-02-06-0-347
- ❖ **407-409 S. Broadway Street is a duplex with 2 bedrooms in each unit**
- ❖ 407-409 S. Broadway Street Parcel ID is 30-02-06-0-340
- ❖ Many renovated units
- ❖ All properties have parking on premises
- ❖ Low vacancy rates
- ❖ Tenants pay utilities
- ❖ Possible income not realized - higher rent potential
- ❖ **FOR SALE AT \$395,000**

716 PITTSBURGH

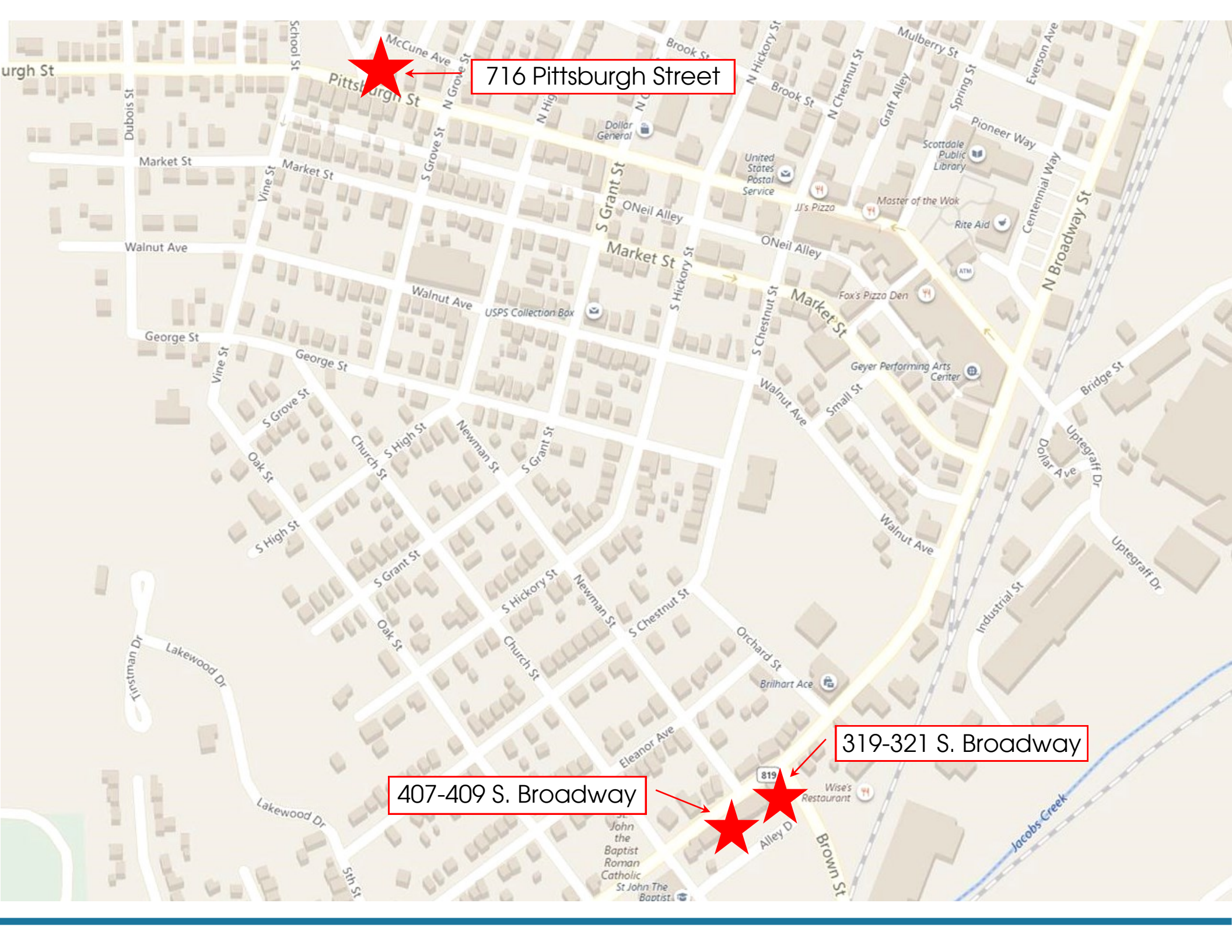


319-321 S. BROADWAY



407-409 S. BROADWAY

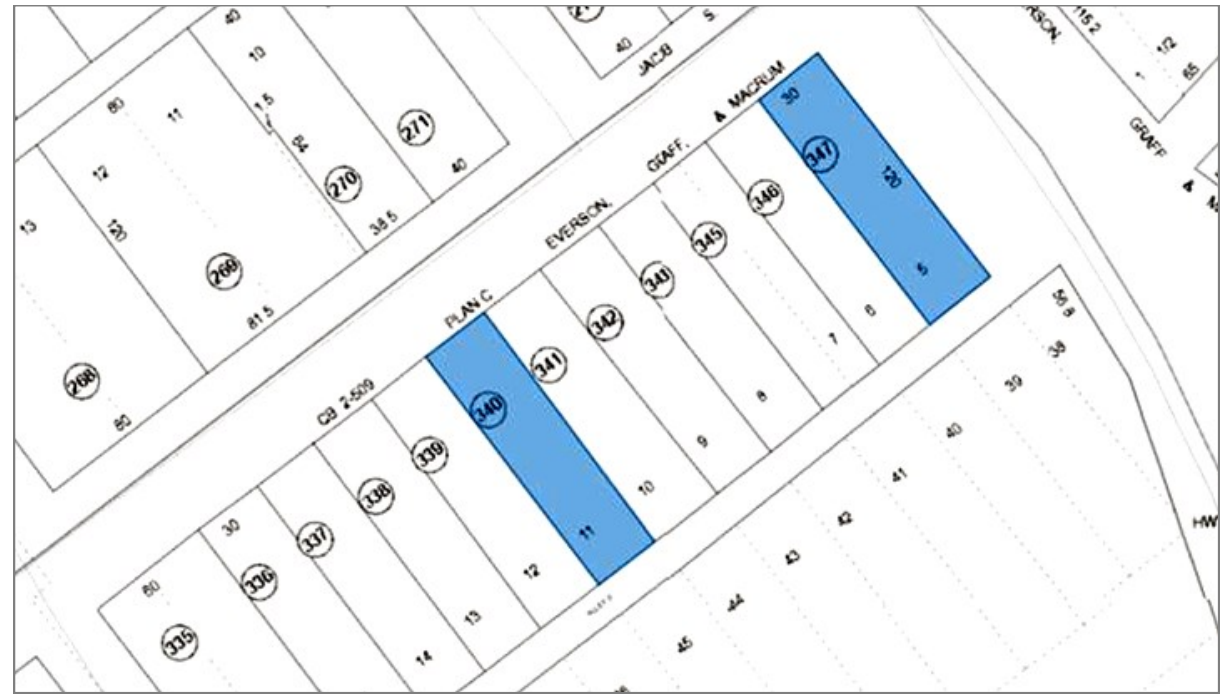




716 Pittsburgh Street

407-409 S. Broadway

319-321 S. Broadway



Alex M. Ruck
 Baker Young Corporation
 One Bigelow Square | Suite 629 | Pittsburgh, PA 15219
 (412) 227-1400 x29
aruck@bakeryoung.com



www.bakeryoung.com

All information furnished regarding this property for sale, rental, or financing is from sources deemed reliable, but no warranty or representation is made as to the accuracy thereof and same is submitted subject to errors, omissions, change of price, rental or other conditions prior to sale, lease or financing or withdrawal without notice. You and your advisors should conduct a careful, independent investigation of the property to determine to your satisfaction the suitability of the property for your needs.