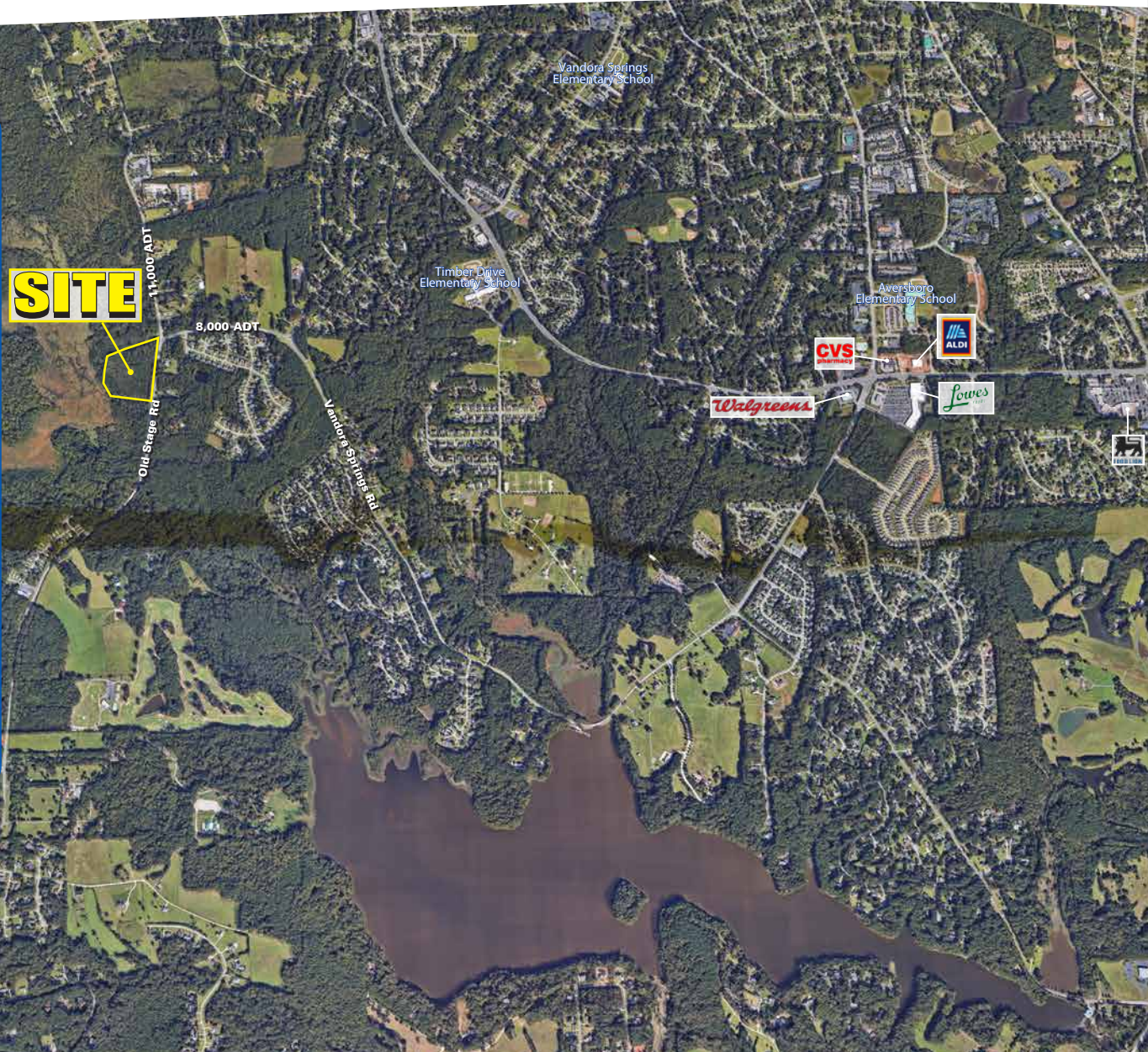


9.9 Acres Available

- 9.9 Acres Available at the corner of Old Stage Rd & Vandora Springs Rd
- Signalized access
- 11,000 ADT on Old Stage Rd & 8,000 ADT on Vandora Springs Rd
- Garner is ideally located along I-40 with close proximity to downtown Raleigh, NC

2018 DEMOGRAPHICS	1 MILE	3 MILE	5 MILE
Population	2,915	32,472	89,046
Med HH Income	\$81,228	\$61,716	\$58,642

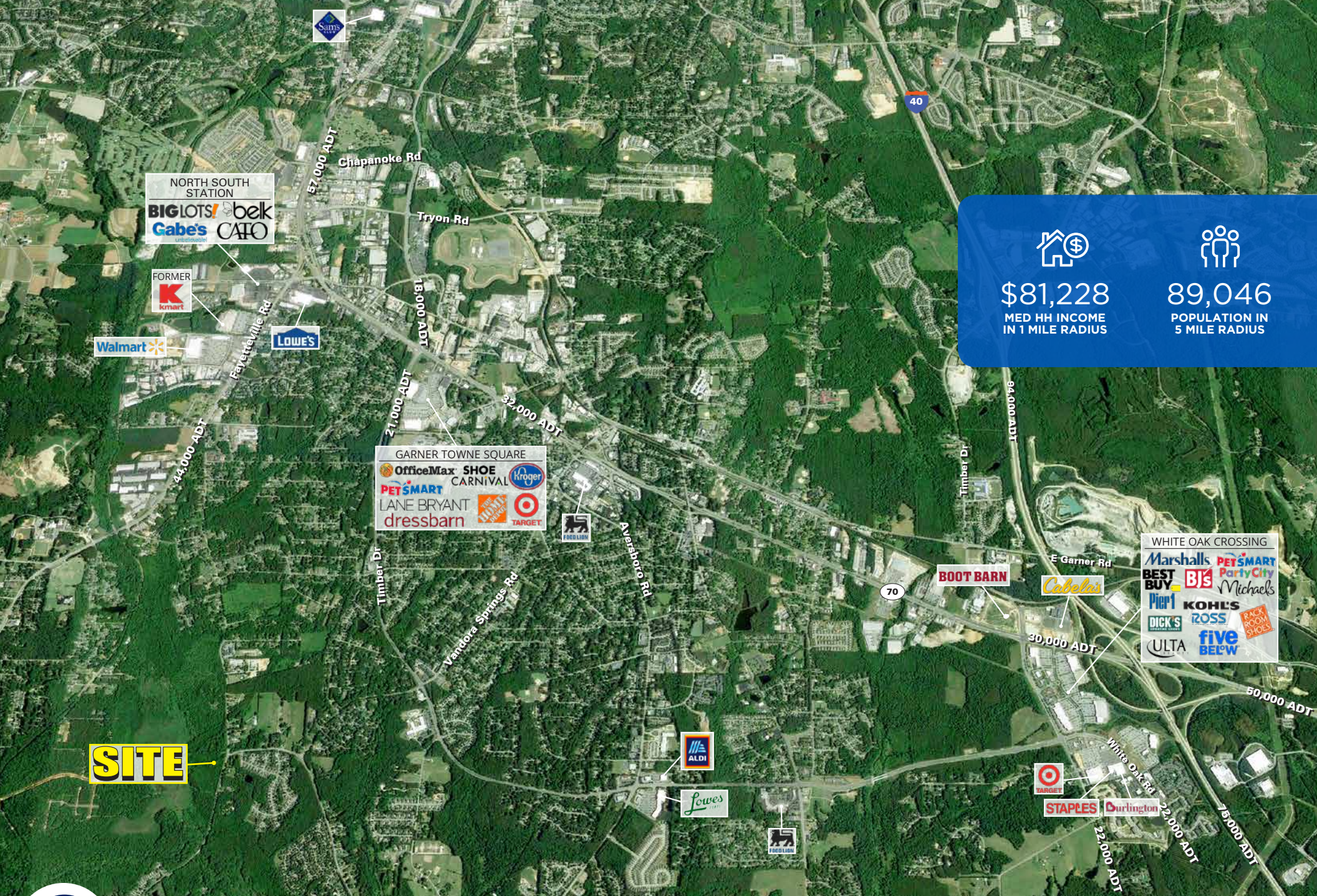




Dan Mullin

704.697.1904
dmullin@atlanticretail.com

Robey Spratt

704.697.1901
rspratt@atlanticretail.com



\$81,228
 MED HH INCOME
 IN 1 MILE RADIUS

89,046
 POPULATION IN
 5 MILE RADIUS

SITE →



GARNER, NC
6800 Old Stage Rd

Dan Mullin
 704.697.1904
 dmullin@atlanticretail.com

Robey Spratt
 704.697.1901
 rspratt@atlanticretail.com