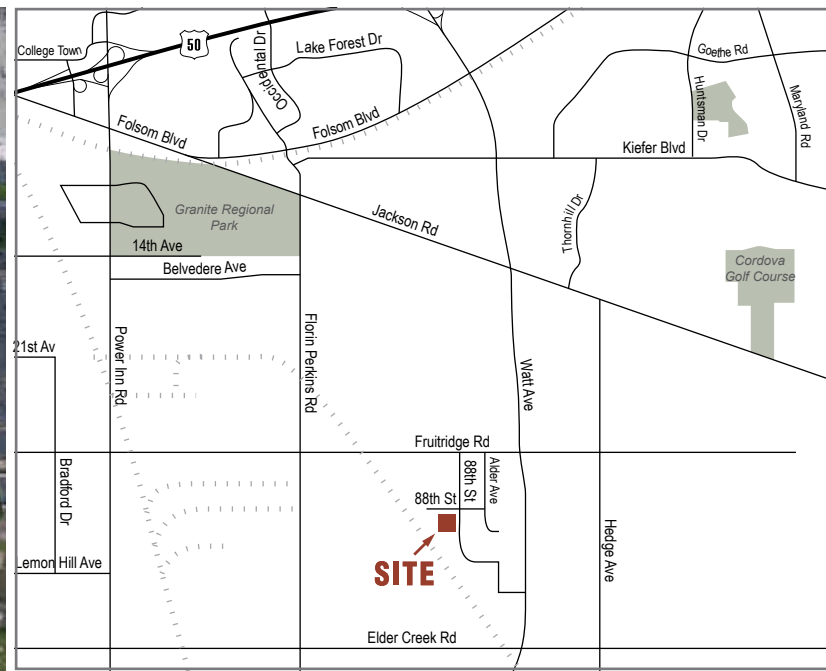


AVAILABLE | 5870 88th Street, Sacramento, CA 95828

**Voit**  
REAL ESTATE SERVICES

**±43,000 SF Total with ± 3,000 SF Office**  
**± 11,400 SF** (Shared Covered Staging Area)



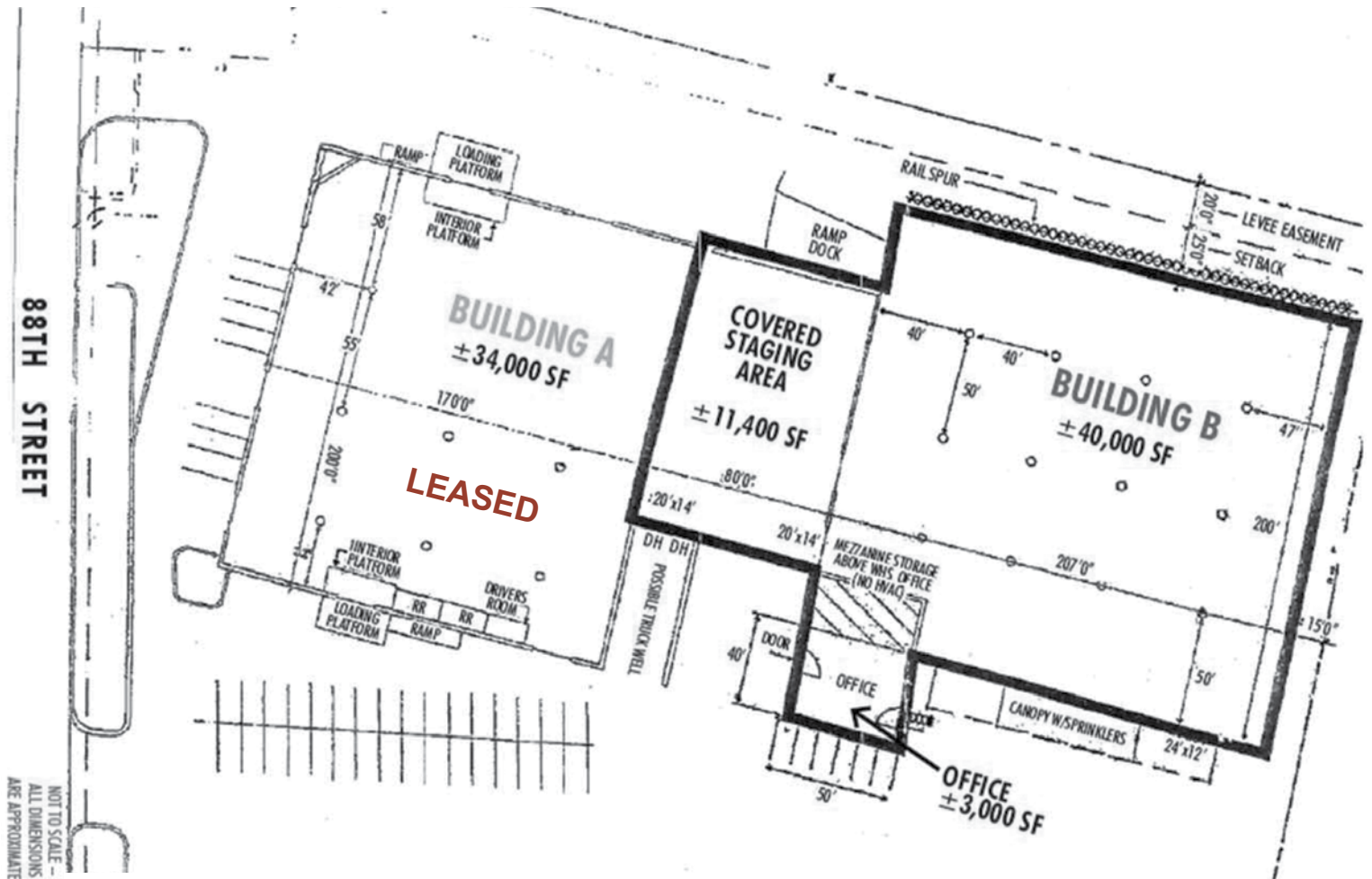
**Bob Keady**  
Vice President  
Lic #00962943  
916.751.3613  
bkeady@voitco.com

2237 Douglas Blvd., Suite 100, Roseville, CA 95661 • 916.772.8648 • 916.848.0205 Fax • Lic #01333376 | www.voitco.com

Real People. Real Solutions.®

±43,000 SF Total with ± 3,000 SF Office

± 11,400 SF (Covered Staging Area)



### Facilities

- Building B: ±43,000 SF Total with ±3,000 SF of Office
- Shared Covered Staging Area: ±11,400 SF
- Multiple Grade Level Doors and Docks
- Fenced Yard Area
- Zoned M-2S

**Bob Keady**  
Vice President  
Lic #00962943  
916.751.3613  
bkeady@voitco.com

**Voit**  
REAL ESTATE SERVICES