

Coming in 4th Quarter 2018!

ACROSS FROM UC DAVIS MEDICAL CENTER
2200 Stockton Blvd, Sacramento, CA



FOR LEASE

Refurbished Historical Building and New Development Coming Soon
Class A Medical Offices and Retail & Restaurant Sites

Kevin Sheehan
916.751.3601
ksheehan@kiddermathews.com
LIC #00936093

Tyler Boyd
916.751.3625
tboyd@kiddermathews.com
LIC #01927167

kiddermathews.com

km Kidder
Mathews

Medical/Retail Development

ACROSS FROM UC DAVIS MEDICAL CENTER
2200 Stockton Blvd, Sacramento, CA

Features

AVAILABLE	47,200 SF Total
FRONTAGE	Stockton Blvd across from UC Davis Medical Center
SIGNAGE	Building signage available
AMENITIES	Covered parking; on-site retail & restaurants
PARKING	Medical & Retail parking on-site
PATIOS	Patios facing Stockton Blvd for restaurant & retail spaces
RATES	\$2.75/SF, NNN (Medical) \$3.50/SF, NNN (Retail)

Availabilities

TOTAL	MEDICAL	RETAIL
47,200 SF	35,000 SF	12,200 SF

All are approximate square footages



Kevin Sheehan

916.751.3601

ksheehan@kiddermathews.com

LIC #00936093

Tyler Boyd

916.751.3625

tboyd@kiddermathews.com

LIC #01927167

kiddermathews.com

km Kidder
Mathews

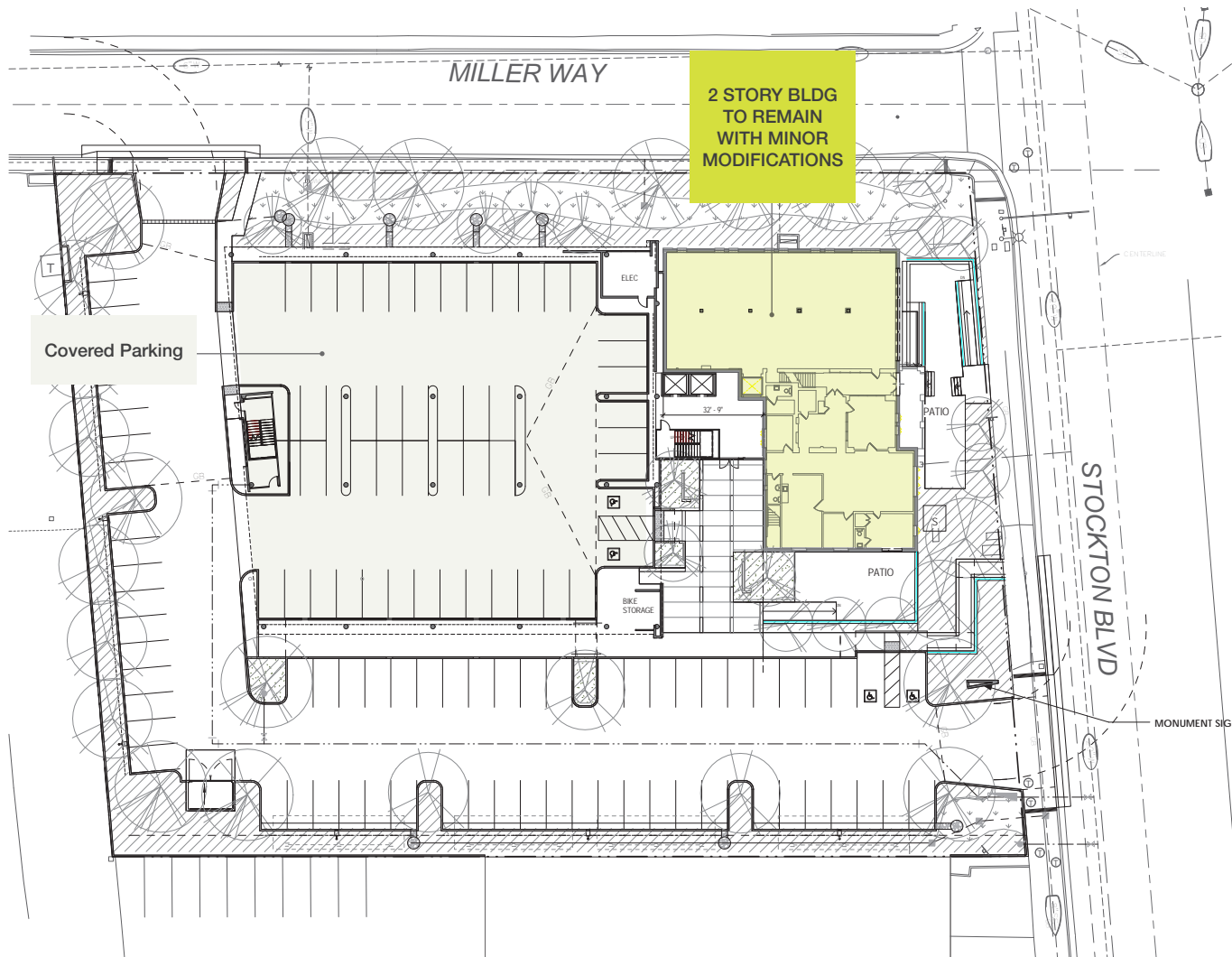
This information supplied herein is from sources we deem reliable. It is provided without any representation, warranty or guarantee, expressed or implied as to its accuracy. Prospective Buyer or Tenant should conduct an independent investigation and verification of all matters deemed to be material, including, but not limited to, statements of income and expenses. Consult your attorney, accountant, or other professional advisor.

Medical/Retail Development

ACROSS FROM UC DAVIS MEDICAL CENTER

2200 Stockton Blvd, Sacramento, CA

Proposed Site Plan - Ground Level



Kevin Sheehan
916.751.3601
ksheehan@kiddermathews.com
LIC #00936093

Tyler Boyd
916.751.3625
tboyd@kiddermathews.com
LIC #01927167

kiddermathews.com

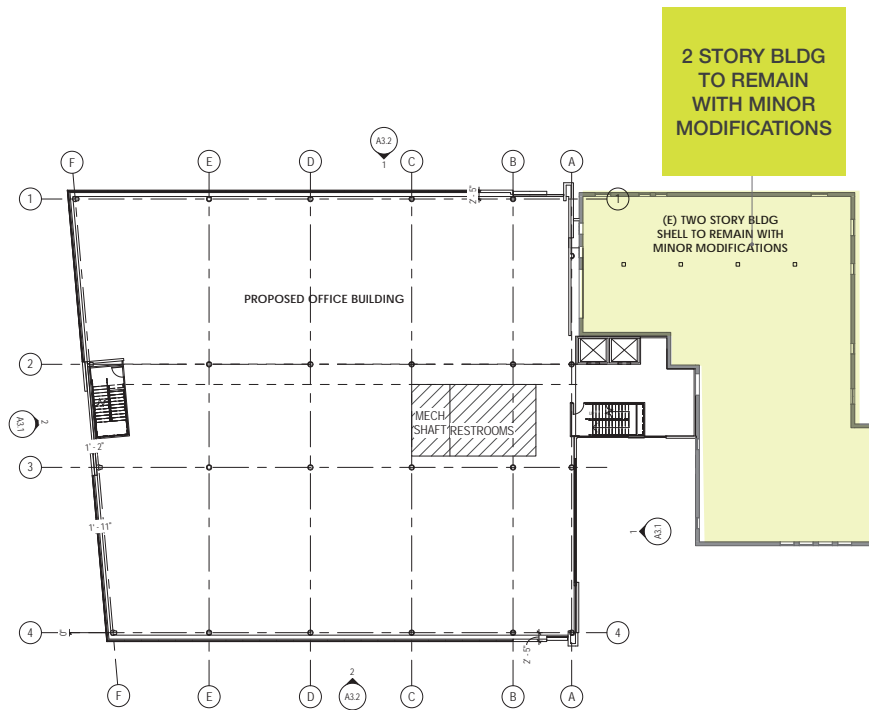


Medical/Retail Development

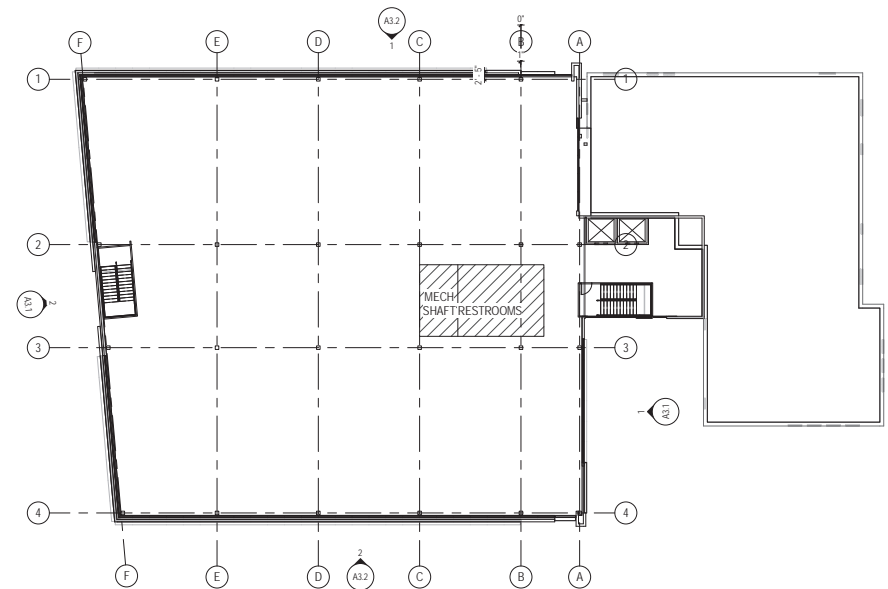
ACROSS FROM UC DAVIS MEDICAL CENTER

2200 Stockton Blvd, Sacramento, CA

Proposed Site Plan - 2nd & 3rd Floors



2ND FLOOR PLAN



3RD FLOOR PLAN

Kevin Sheehan
916.751.3601
ksheehan@kiddermathews.com
LIC #00936093

Tyler Boyd
916.751.3625
tboyd@kiddermathews.com
LIC #01927167

kiddermathews.com



Medical/Retail Development

ACROSS FROM UC DAVIS MEDICAL CENTER

2200 Stockton Blvd, Sacramento, CA

Planned Development

ELEVATIONS



HIGHLIGHTS

Class A medical space,
±35,000 SF total

Rare retail/restaurant space
±12,200 SF total

Combines historical
architecture with modern
functionality

Building and monument
signage with on-site
parking

Kevin Sheehan
916.751.3601
ksheehan@kiddermathews.com
LIC #00936093

Tyler Boyd
916.751.3625
tboyd@kiddermathews.com
LIC #01927167

kiddermathews.com



Medical/Retail Development

ACROSS FROM UC DAVIS MEDICAL CENTER
2200 Stockton Blvd, Sacramento, CA

Planned Development

ELEVATIONS



Kevin Sheehan
916.751.3601
ksheehan@kiddermathews.com
LIC #00936093

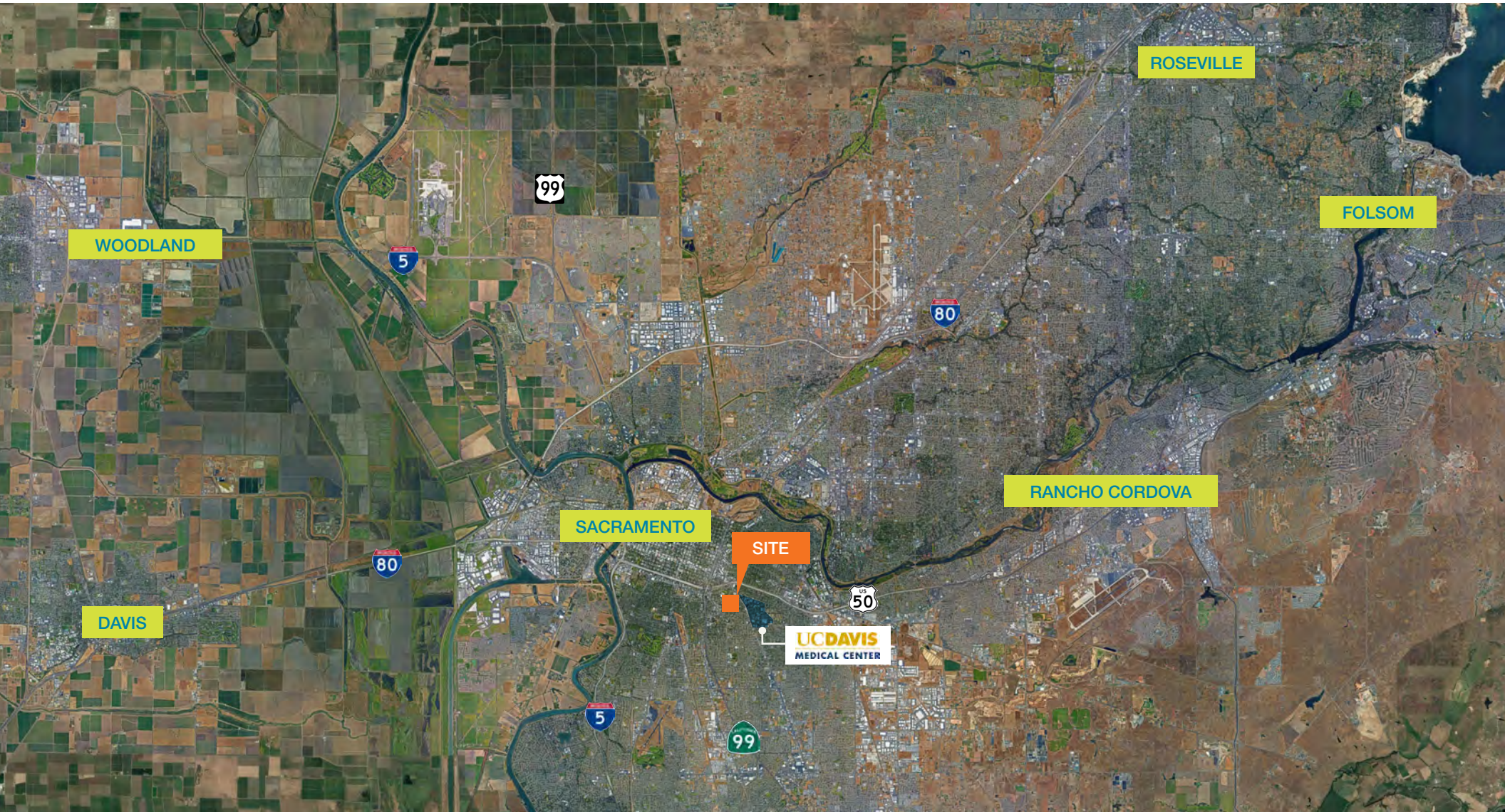
Tyler Boyd
916.751.3625
tboyd@kiddermathews.com
LIC #01927167

kiddermathews.com



Medical/Retail Development

ACROSS FROM UC DAVIS MEDICAL CENTER
2200 Stockton Blvd, Sacramento, CA



Kevin Sheehan
916.751.3601
ksheehan@kiddermathews.com
LIC #00936093

Tyler Boyd
916.751.3625
tboyd@kiddermathews.com
LIC #01927167

kiddermathews.com



This information supplied herein is from sources we deem reliable. It is provided without any representation, warranty or guarantee, expressed or implied as to its accuracy. Prospective Buyer or Tenant should conduct an independent investigation and verification of all matters deemed to be material, including, but not limited to, statements of income and expenses. Consult your attorney, accountant, or other professional advisor.