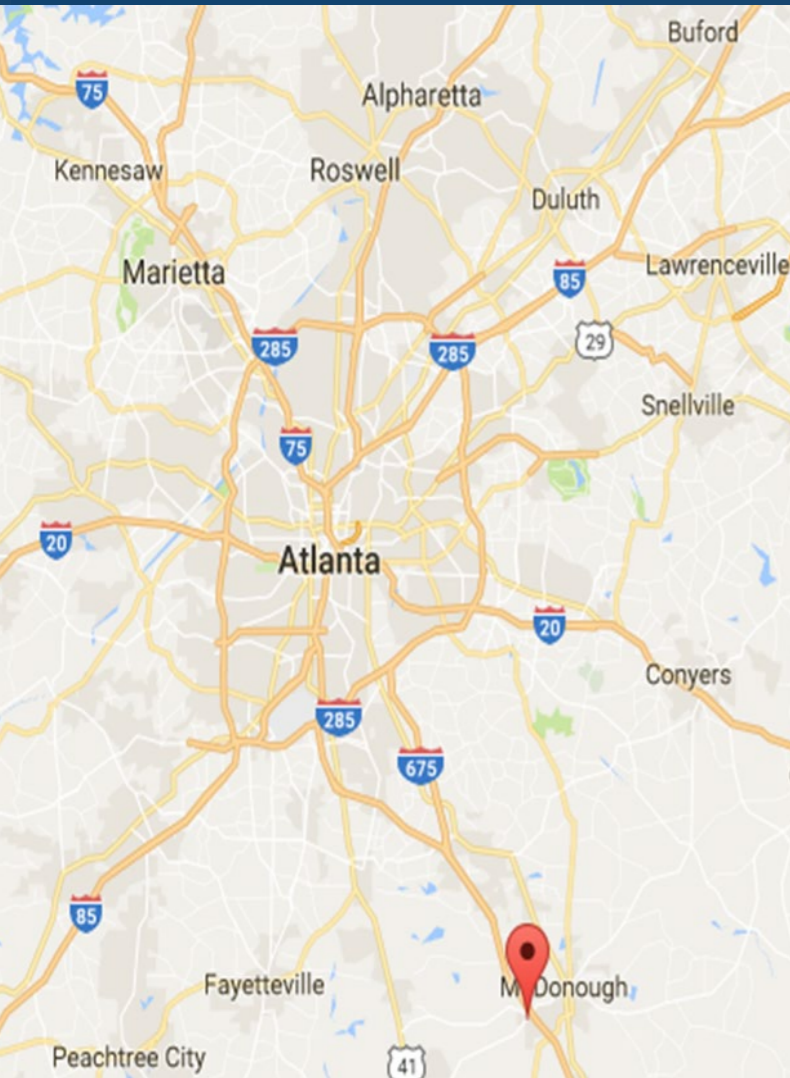


Avalon Village

1044 Avalon Parkway
McDonough, Georgia 30253



Leasing Contacts

Allie Hodge (678) 501-5342

Marrissa Chanin: (678) 501-5341

Email: info@riverwoodproperties.com

Avalon Village is located in Henry County on Highway 20, west of Interstate 75 in McDonough, Georgia. The site is directly across the street from South Point, a regional power center development. Avalon, a 1,900 home residential community as well as a 400 unit apartment complex are located behind the property. Westridge, a multi-use development, is located to the west of the property on Highway 20. This site offers both excellent visibility and access to eastbound and westbound traffic on Highway 20 and Interstate 75.

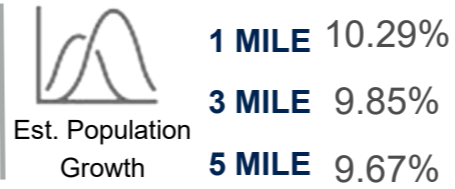
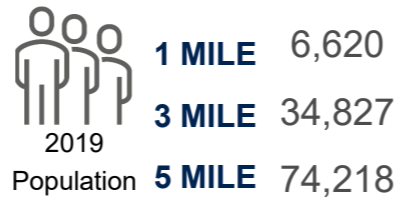
Intersection: Avalon Parkway & Hampton Road

Daily Traffic Counts: 22,720 Vehicles Per Day

Site Access: Property is accessible via two curb cuts on Highway 20 and has access to the traffic signal at Richfield Parkway.

Avalon Village

AREA DEMOGRAPHICS



1040 La Maison Dermesthetics 1,196

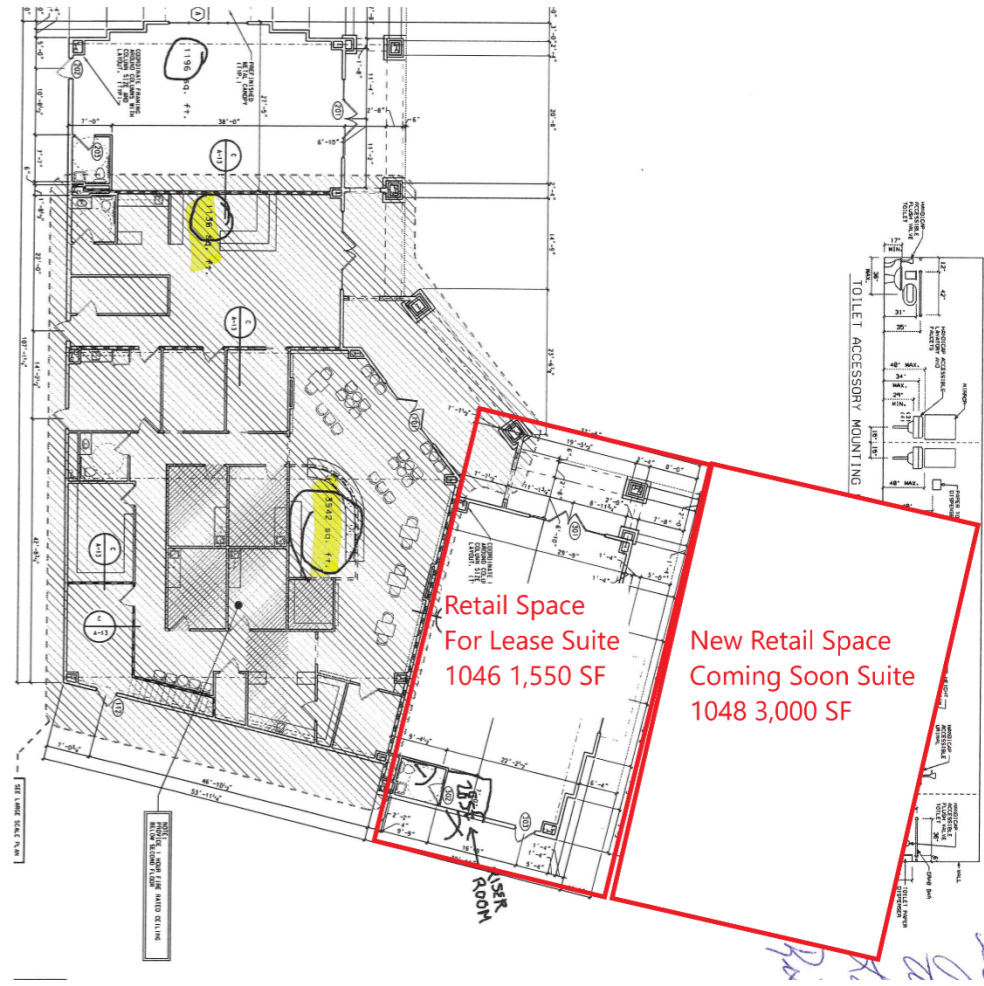
1044 My EyeDr 5,125

1046 Retail Space Available 1,550

1048-1030 New Retail Space Coming Soon 3,000

GLA: 7,871 SF

Availability: 1,550- 3,000 SF



AVALON VILLAGE
Trade Area Overview

