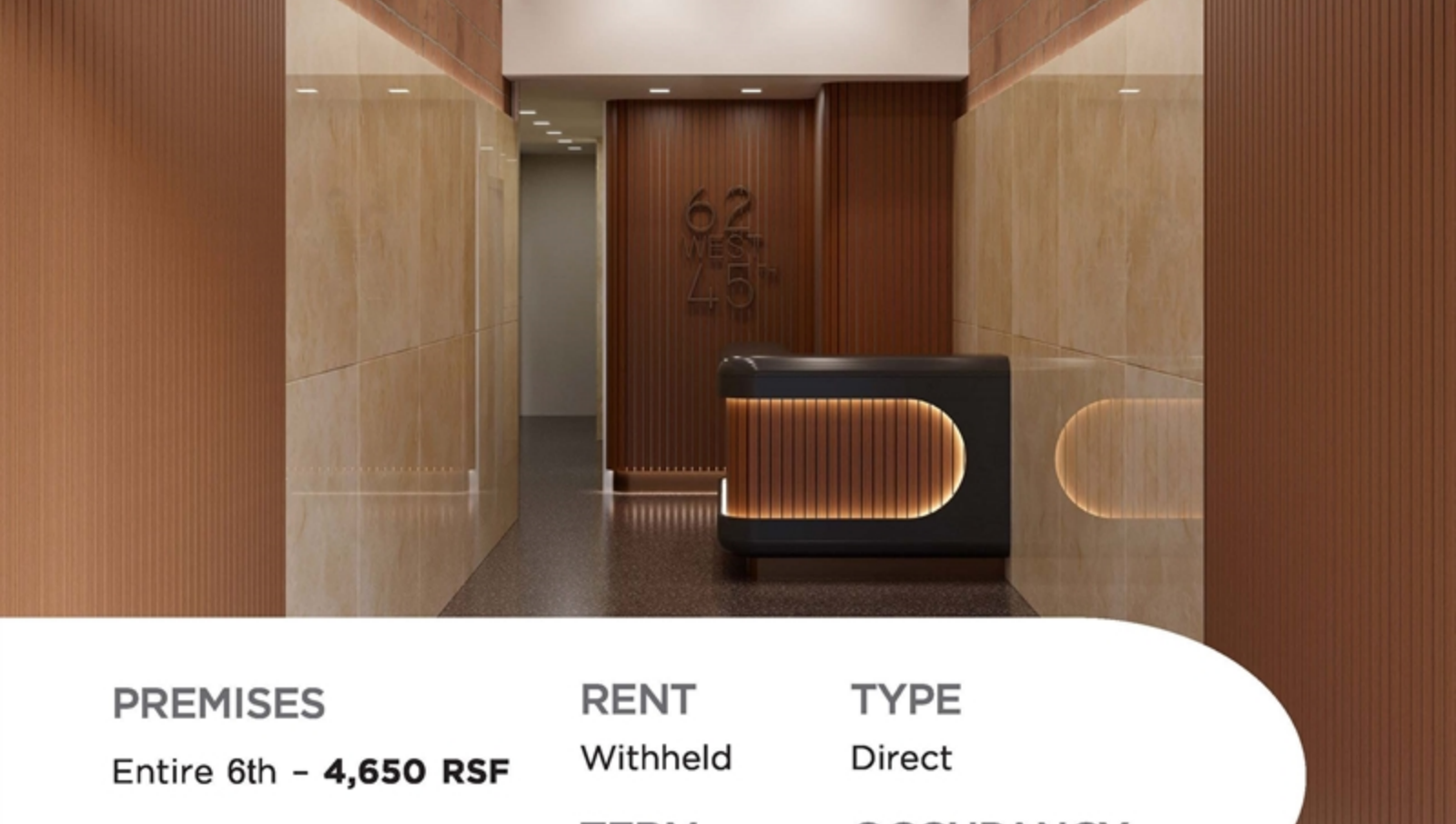




**62W
45TH**

NEWMARK

SOHO LOFTS IN MIDTOWN



PREMISES
Entire 6th - **4,650 RSF**

RENT
Withheld

TYPE
Direct

TERM
Negotiable

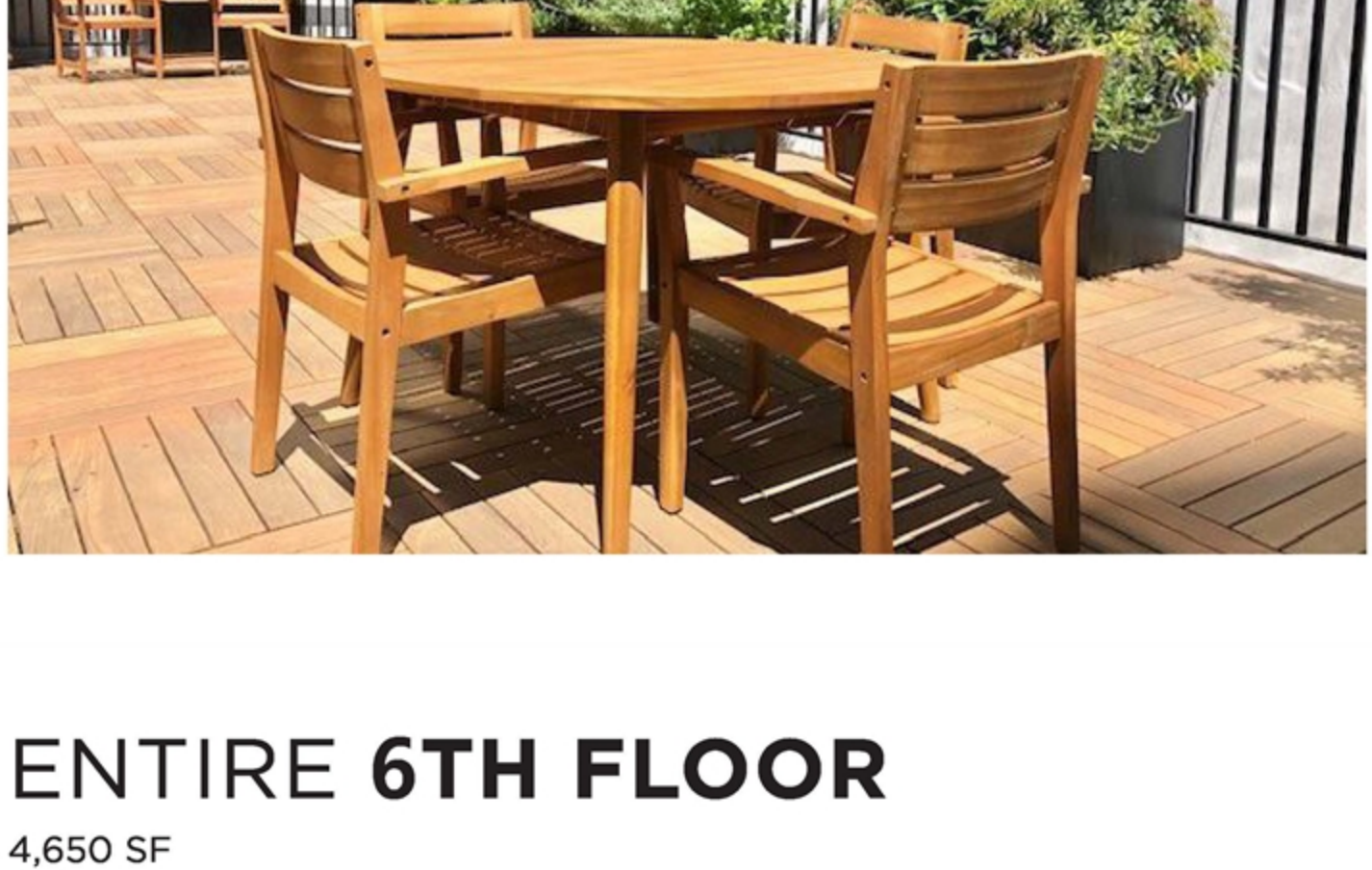
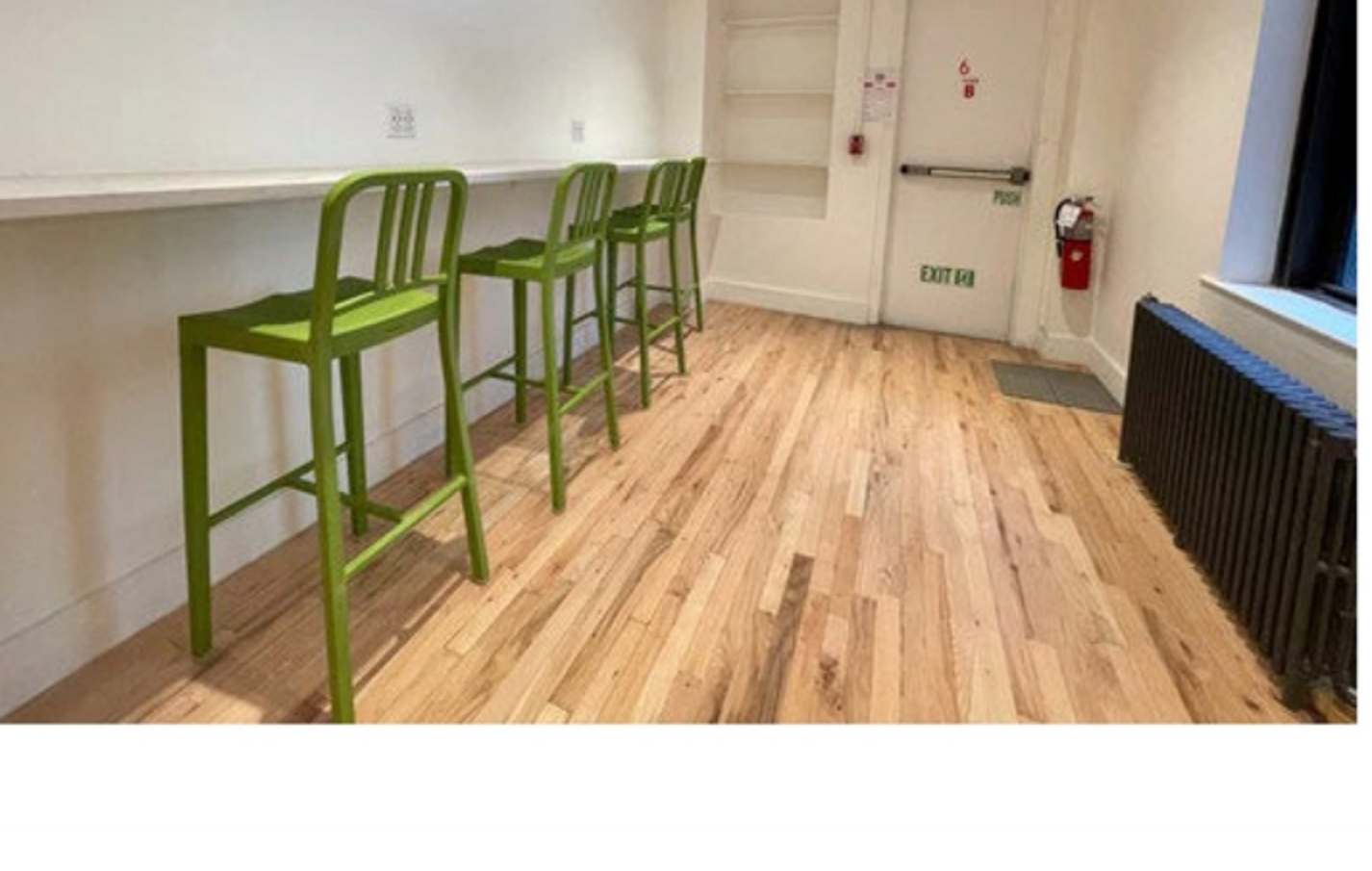
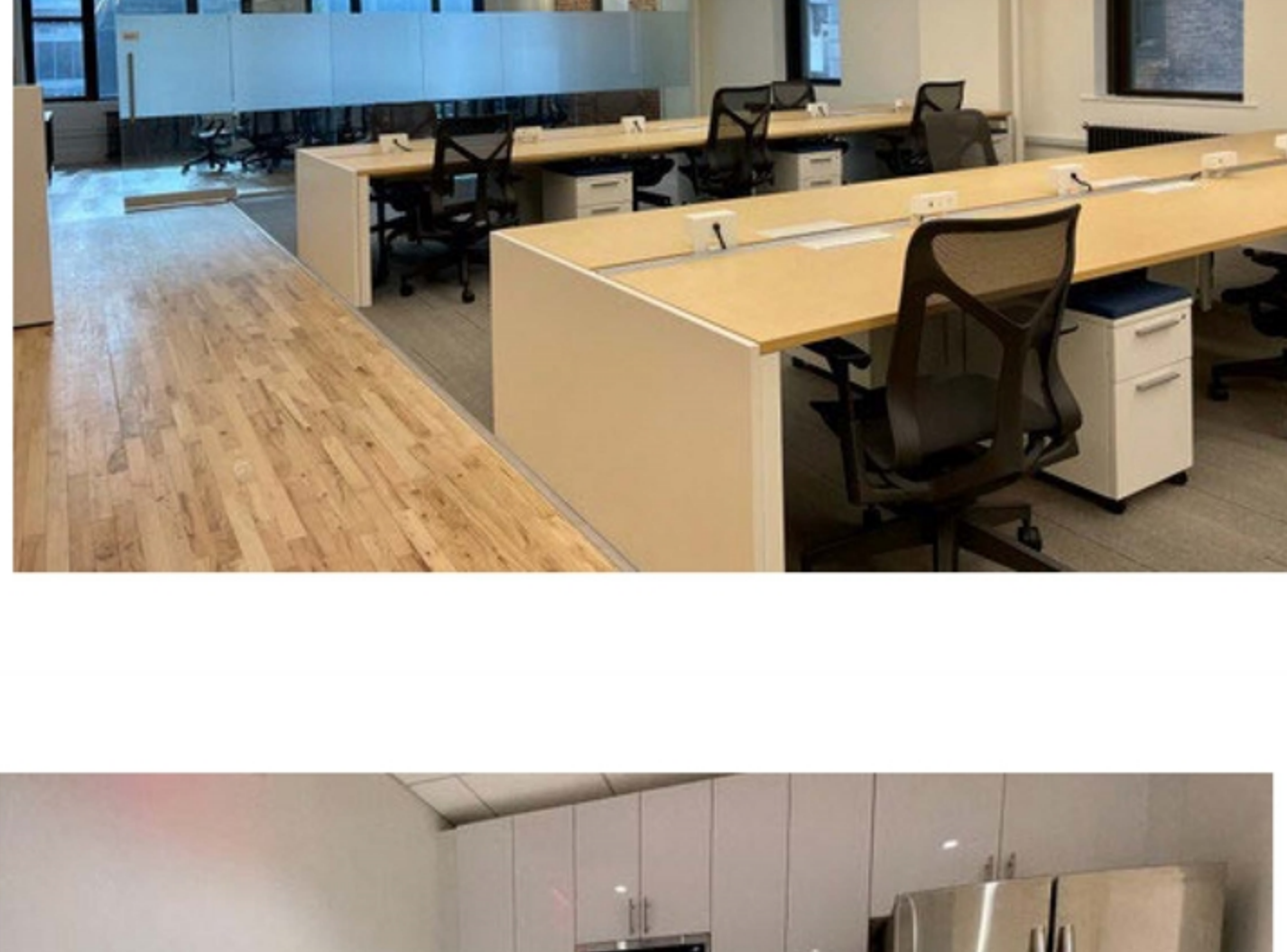
OCCUPANCY
Through June 2026

JARAD WINTER
212-372-2361
jarad.winter@nrmk.com

JD COHEN
212-850-5476
jd.cohen@nrmk.com

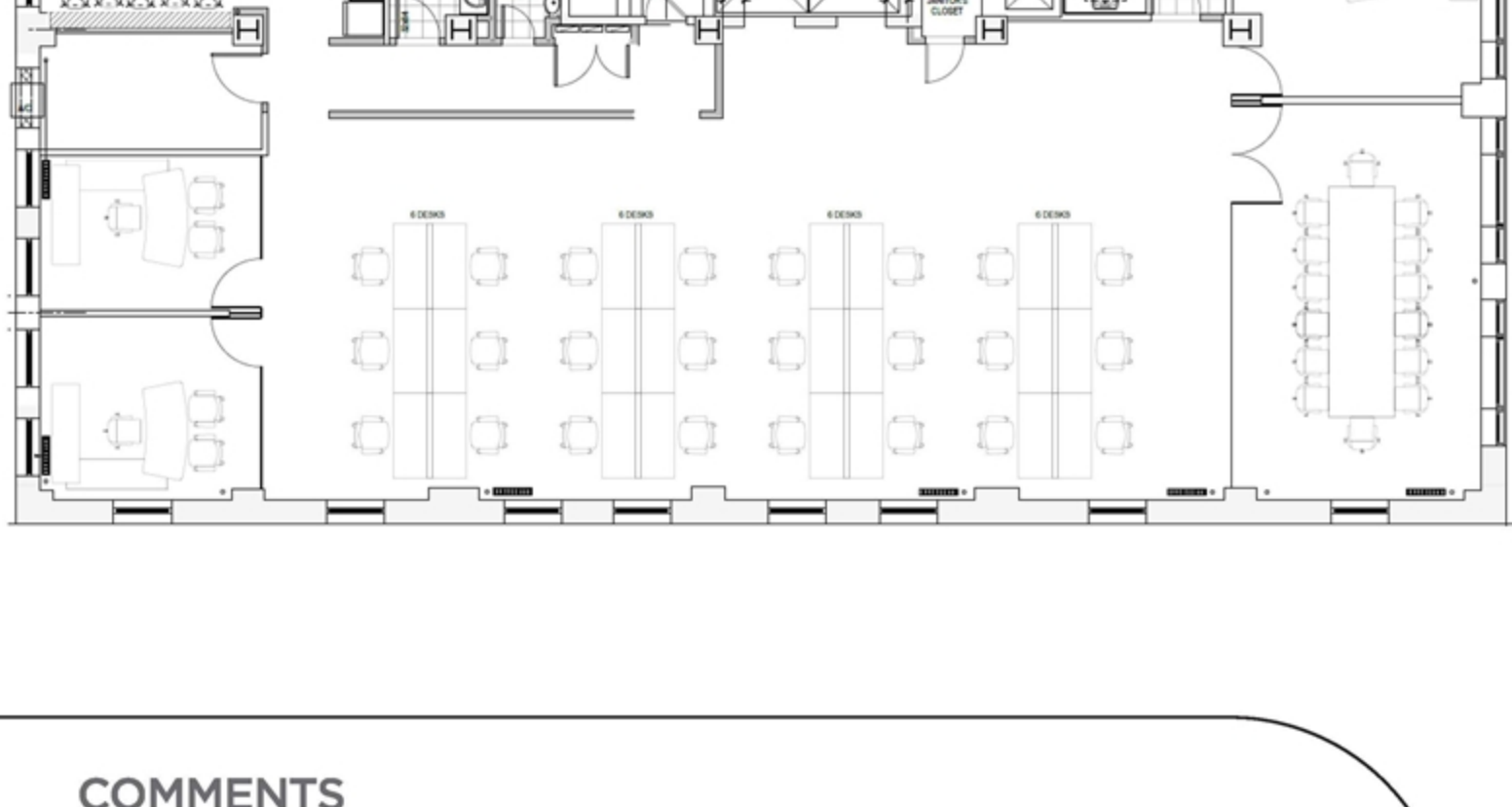
WILLIAM COHEN
212-372-2233
william.cohen@nrmk.com

ARIEL HARWOOD
t 212-372-2077
ariel.harwood@nrmk.com



ENTIRE 6TH FLOOR

4,650 SF



COMMENTS

- Full floor, loft style, luxury office space.
- High, plaster ceilings with tongue-and-groove wood floors.
- Exposed brick.
- Monumental sized windows showcasing park views.
- Modern, all white pantry with stainless steel appliances.
- Luxurious, private restroom facilities on each floor.
- Roof deck for safe outdoor gatherings.
- Key fob tenant-controlled security.

JARAD WINTER
212-372-2361
jarad.winter@nrmk.com

JD COHEN
212-850-5476
jd.cohen@nrmk.com

WILLIAM COHEN
212-372-2233
william.cohen@nrmk.com

ARIEL HARWOOD
t 212-372-2077
ariel.harwood@nrmk.com

**62W
45TH**

JARAD WINTER
212-372-2361
jarad.winter@nrmk.com

JD COHEN
212-850-5476
jd.cohen@nrmk.com

WILLIAM COHEN
212-372-2233
william.cohen@nrmk.com

ARIEL HARWOOD
t 212-372-2077
ariel.harwood@nrmk.com

NEWMARK

The information contained herein has been obtained from sources deemed reliable but has not been verified and no guarantee, warranty or representation, either express or implied, is made with respect to such information. Terms of sale or lease and availability are subject to change or withdrawal without notice.

[DOWNLOAD BROCHURE](#)