

# 18th & Thwop

PILSEN

EXCEPTIONAL RETAIL  
OPPORTUNITY IN ONE OF  
THE WORLD'S COOLEST  
NEIGHBORHOODS

RETAIL LEASING:

MARK FREDERICKS

312.275.3109

mark@baumrealty.com

TREVOR JACK

312.275.3128

trevor@baumrealty.com

 **BAUM**  
REALTY GROUP



# PROPERTY HIGHLIGHTS

**Retail space available** with excellent visibility and accessibility

**Corner location** at 18th & Throop

Retail spaces feature high ceilings and lots of natural light

## AVAILABLE SPACE:

**2,132 SF** space and

**2,181 SF** corner space available

## FRONTAGE:

**Incredible frontage** along 18th Street

## AVAILABILITY:

Immediate Availability



## RETAIL LEASING:

**MARK FREDERICKS**

312.275.3109

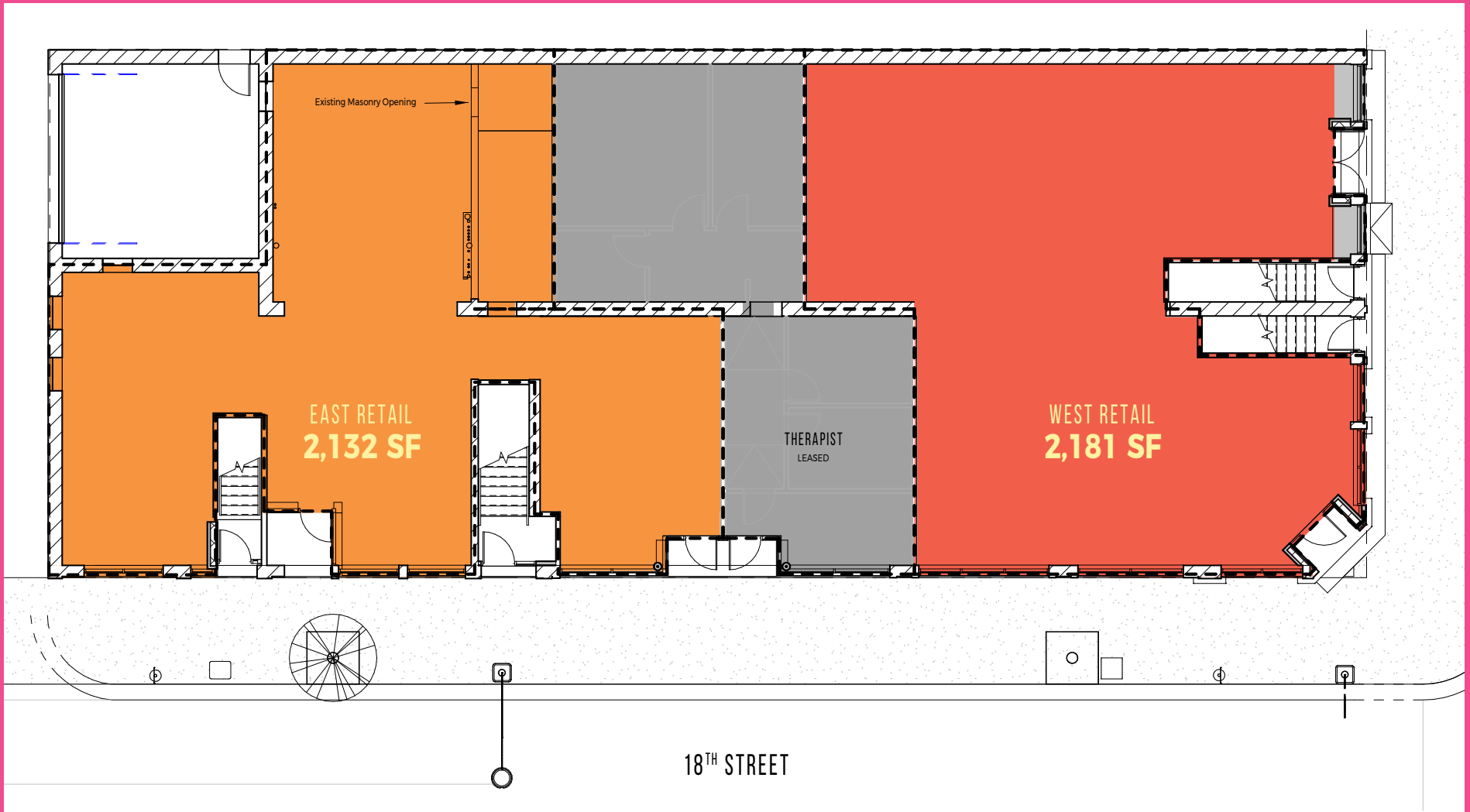
mark@baumrealty.com

**TREVOR JACK**

312.275.3128

trevor@baumrealty.com

# SITE PLAN



**RETAIL LEASING:**

**MARK FREDERICKS**  
312.275.3109  
mark@baumrealty.com

**TREVOR JACK**  
312.275.3128  
trevor@baumrealty.com



# ONE OF THE 12 COOLEST NEIGHBORHOODS IN THE WORLD



Recently named one of the **12 coolest neighborhoods in the WORLD** by **Forbes**, culture thrives in Pilsen.

Bold murals line the walls of the CTA 18<sup>th</sup> Street Pink Line 'L' station and the viaducts along 16<sup>th</sup> Street, on the fronts of homes, along railway overpasses, and wrapped around train platforms. The artful vibe continues within storefront galleries and studios, as well as in the colorful collections of the National Museum of Mexican Art, a highly-regarded cultural institution.

Blended and full of diversity, Pilsen features offbeat vintage shops, galleries, and independent coffee houses alongside world-class restaurants serving everything from authentic Mexican cuisine to high-end restaurants run by award-winning chefs.



BRENDA "KOZMO" LOPEZ  
1449 W. 18<sup>TH</sup> STREET, 2016

**RETAIL LEASING:**

**MARK FREDERICKS**  
312.275.3109  
mark@baumrealty.com

**TREVOR JACK**  
312.275.3128  
trevor@baumrealty.com



# 18th & Throop

PILSEN

CONCEPTUAL RENDERING





# PILSEN HIGHLIGHTS



**588,264**

annual riders at the 18th Street CTA  
Pink Line 'L' station (2017)

**42,815**

Total  
Population

**94**

Walk Score  
Walker's Paradise

**94**

Bike Score  
Excellent bike lanes

**17,900**

Total  
Employees

**"FEATURING STREETS LINED WITH HIP GALLERIES AND WALLS DECORATED WITH COLORFUL MURALS DATING FROM THE 1970s, THE PILSEN NEIGHBORHOOD ON CHICAGO'S LOWER WEST SIDE IS A NEST OF CUTTING-EDGE CULTURE AND ART"**

-Melissa Biggs Bradley - CEO/Founder of Indagare Travel

**RETAIL LEASING:**

**MARK FREDERICKS**

312.275.3109

mark@baumrealty.com

**TREVOR JACK**

312.275.3128

trevor@baumrealty.com





**PLATES, PAINTINGS, & PALETAS**

**S.K.Y.**

**(TOP LEFT)**

LEVE alum Chef Stephen Gillanders's first solo venture named after his wife, Seon Kyung Yuk (S.K.Y). The restaurant serves soulful Asian-inspired small plates and affordable craft cocktails in an airy, industrial-chic space. S.K.Y. was listed as one of Chicago's 50 Best Restaurants by Chicago Magazine and Phil Vettel for the Chicago Tribune. *1239 W. 18<sup>th</sup> Street*

**Next door to 18<sup>th</sup> & Throop**

**16<sup>th</sup> STREET MURALS**

**(BOTTOM LEFT)**

Viaduct along 16<sup>th</sup> Street lined with murals that date over a decade back. Some by internationally known Chicago street artists. Pictured: Hebru Brantley Mural painted in 2013 *W. 16<sup>th</sup> Street*

**2-5 min walk from 18<sup>th</sup> & Throop**

**LA MICHOCACANA PREMIUM**

**(BOTTOM RIGHT)**

Serving delicious, Instagram-worthy paletas in Pilsen since 2015.

*1855 S. Blue Island Avenue*  
**4 min walk from 18<sup>th</sup> & Throop**



**RETAIL LEASING:**

**MARK FREDERICKS**

312.275.3109

mark@baumrealty.com

**TREVOR JACK**

312.275.3128

trevor@baumrealty.com



**PILSEN'S DINING & ENTERTAINMENT MECCA**

Pilsen has long been home to exceptional restaurants and bars, but thanks to a new wave of restaurants along 18<sup>th</sup> Street, Pilsen is morphing into one of the most dynamic areas in the city for food, drink and entertainment.

Standout newcomers include HaiSous, recipient of Michelin's 2018-2019 Bib Gourmand + James Beard Foundation 2018 Semifinalist for "Best New Restaurant"; critically acclaimed S.K.Y.; Tack Room, a hip piano bar; and Furious Spoon's Pilsen outpost.



**RETAIL LEASING:**

**MARK FREDERICKS**

312.275.3109

mark@baumrealty.com

**TREVOR JACK**

312.275.3128

trevor@baumrealty.com



**NOTEWORTHY NEIGHBORS**

**THALIA HALL + DUSEK'S BOARD & BEER + PUNCH HOUSE + TACK ROOM**  
 Restaurant Group 16th on Center has firmly planted their flag along 18<sup>th</sup> Street with one of the city's premier live music venues (Thalia Hall), a high-end pub (Dusek's Board & Beer), a basement bar (Punch House) and a cozy, carriage house turned piano bar (Tack Room) all housed under the same roof.  
 18<sup>th</sup> & Allport  
 2 minute walk from 18<sup>th</sup> & Throop



**RETAIL LEASING:**

**MARK FREDERICKS**  
 312.275.3109  
 mark@baumrealty.com

**TREVOR JACK**  
 312.275.3128  
 trevor@baumrealty.com





**18th &  
Throop**  
PILSEN

## EXCEPTIONAL RETAIL OPPORTUNITY IN CHICAGO'S COOLEST NEIGHBORHOOD

RETAIL LEASING:

**MARK FREDERICKS**

312.275.3109

mark@baumrealty.com

**TREVOR JACK**

312.275.3128

trevor@baumrealty.com

BROKER OWNED



© 2018 All information supplied is from sources deemed reliable and is furnished subject to errors, omissions, modifications, removal of the listing from sale or lease, and to any listing conditions, including the rates and manner of payment of commissions for particular offerings, the terms of which are available to principals or duly licensed brokers. This information may include estimates and projections with respect to future events, and these future events may or may not actually occur. Such estimates and projections reflect various assumptions concerning anticipated results. While we believe these assumptions are reasonable, there can be no assurance that any of these estimates and projections will prove to have been correct. Therefore, actual results may vary materially from these forward-thinking estimates and projections. Any square footage dimensions set forth are approximate.