

# Northridge Fashion Center

CREATIVE OFFICE SPACE

**FOR LEASE**

**9301**

**TAMPA AVENUE**

NORTHRIDGE, CALIFORNIA 91324

**±45,369 RSF**

**FOR MORE INFORMATION, PLEASE CONTACT:**

**TODD WUSCHNIG**  
DIRECTOR  
DIR: 818. 455.8205  
LICENSE #: 01367230

**LAUREN NESMITH**  
ASSOCIATE  
DIR: 818.550.8200 EXT.105  
LICENSE #: 02040126

Charles Dunn

CHARLESDUNN.COM  
LIC#01201641



# PROPERTY INFORMATION & FEATURES



## PROPERTY FEATURES

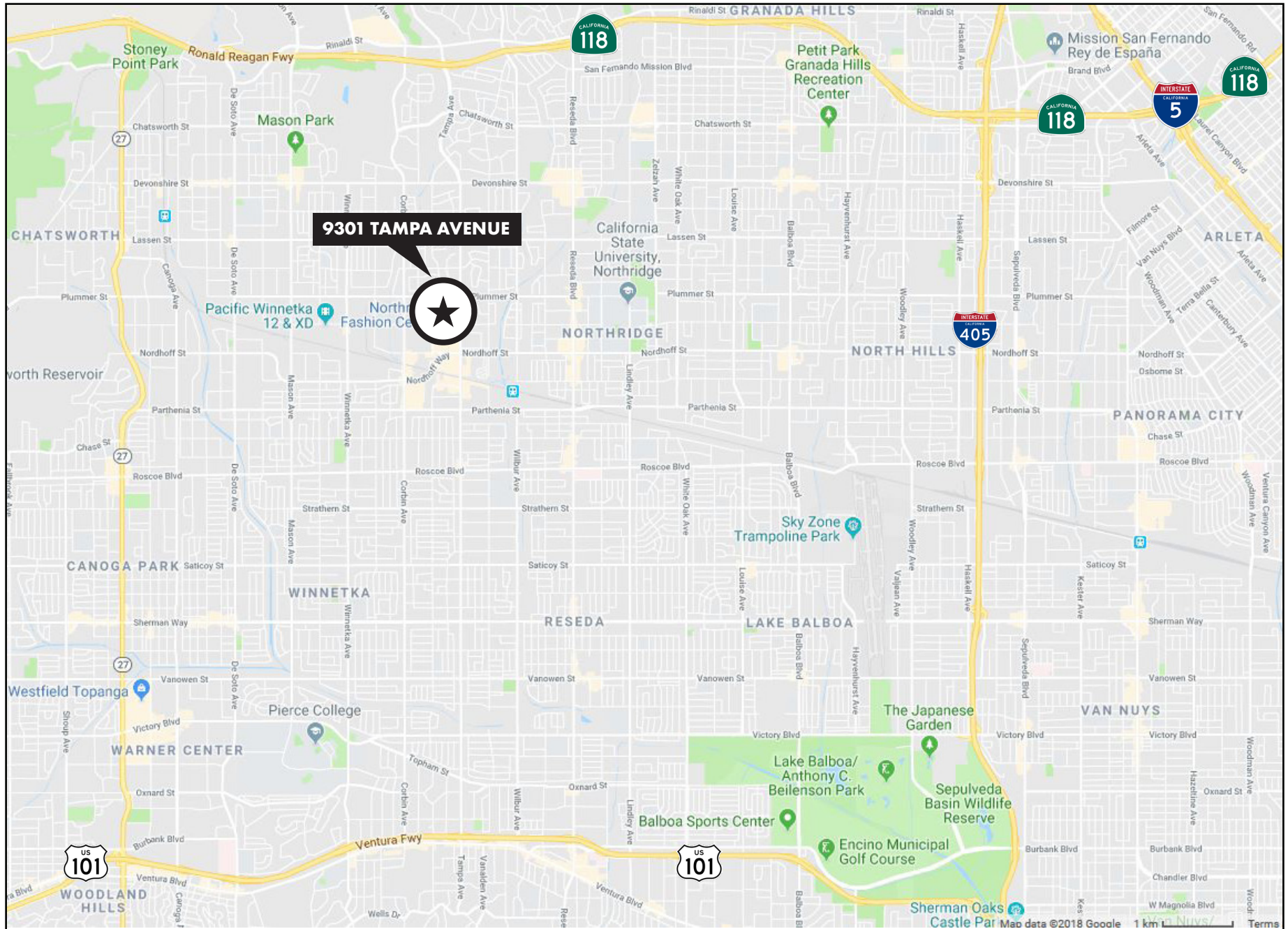
- › Conveniently located along the perimeter of Northridge Fashion Center.
- › Accessible by 405, 101, and 118 freeways.
- › Build to suit opportunity.
- › Private patio with mountain and atrium views, exposed brick, open ceilings, and skylights.

## PROPERTY INFORMATION

<b>Address</b>	9301 Tampa Avenue, Northridge, CA 91324
<b>Level:</b>	Third level of Northridge Fashion Center
<b>Floor Plate:</b>	±45,369 RSF
<b>Rental Rate:</b>	\$2.25 PRSF (Modified Gross Basis)
<b>Parking:</b>	Free parking (electric vehicle charging stations available)
<b>Parking Ratio:</b>	5.00/1,000

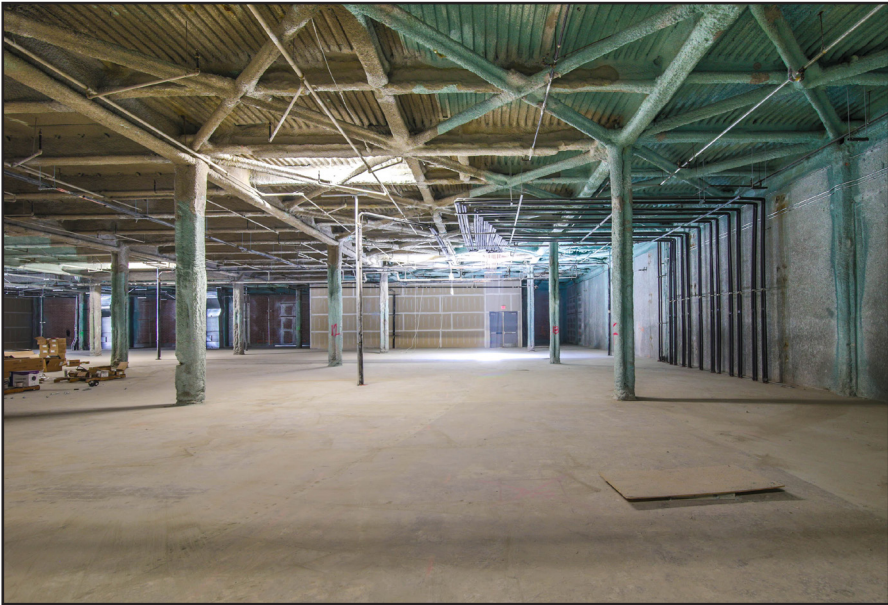


# PROXIMITY MAP



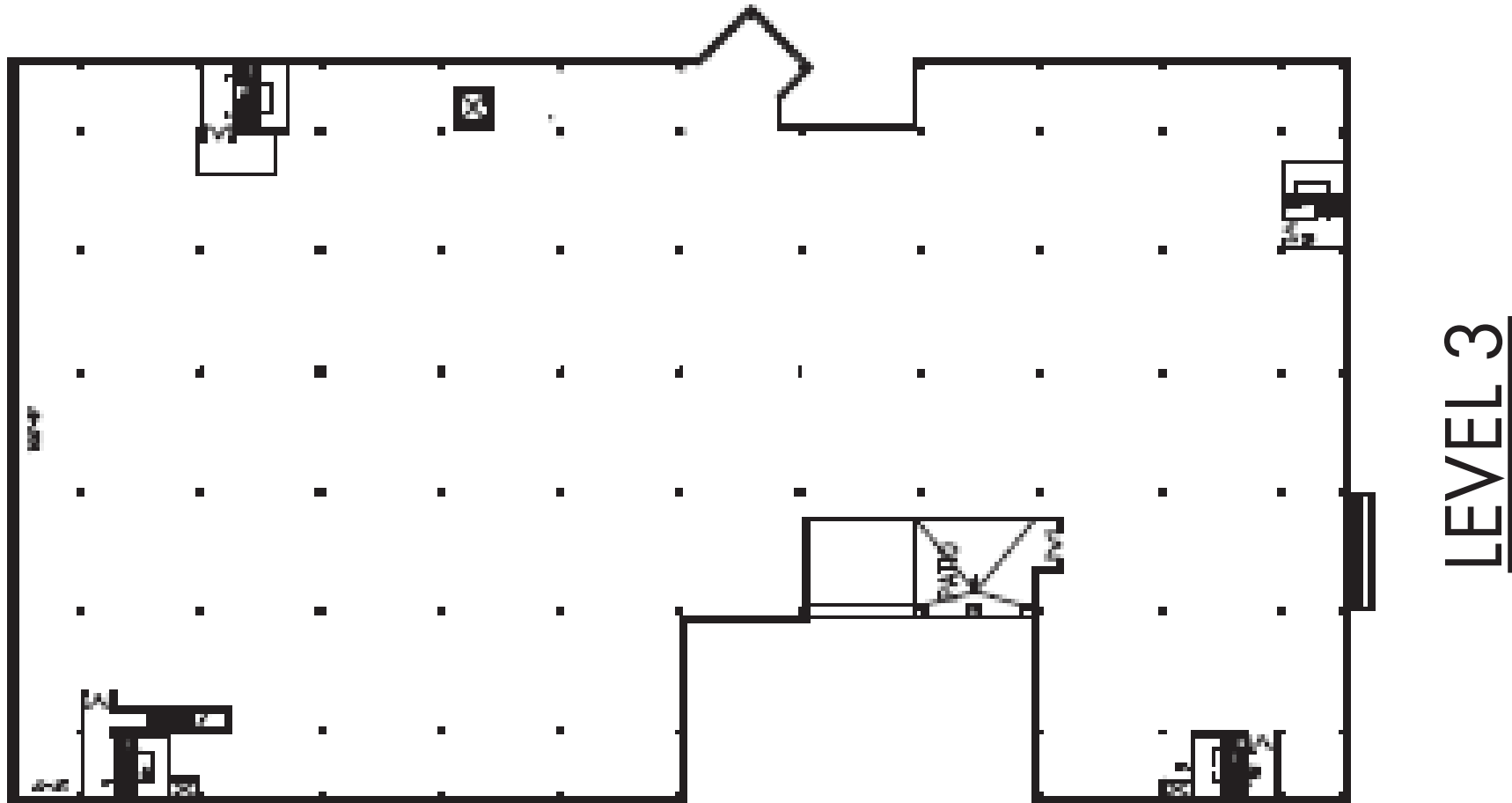


# PROPERTY PHOTOS



# FLOOR PLATE

---

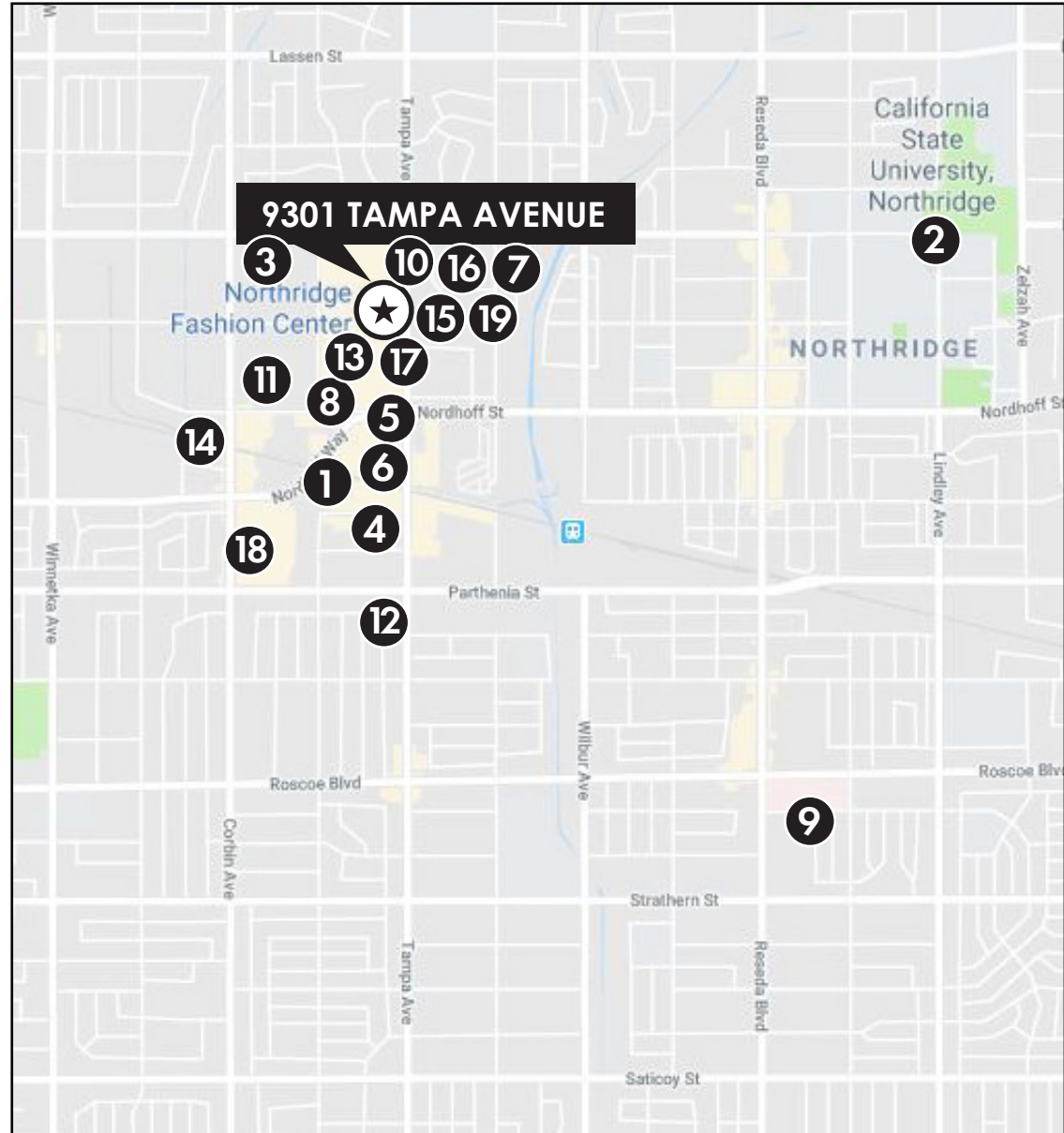


Northridge Fashion Center  
9301 Tampa Avenue Northridge, California  
Approximately 45,369 RSF

# AMENITIES MAP

- › Convenient work, shop, and play location
- › Over 40 dining options within walking distance
- › Weekly Farmer's Market
- › Ample parking

- 1 24 Hour Fitness
- 2 California State University Northridge
- 3 Chase Bank
- 4 Chik-fil-A
- 5 Citibank
- 6 Claim Jumper
- 7 Costco Wholesale
- 8 Dave & Buster's
- 9 Dignity Health Northridge Hospital
- 10 Food Court
- 11 Lowe's Home Improvement
- 12 Marie Calendar's
- 13 Northridge Fashion Center 10 Movie Theatre
- 14 Olive Garden
- 15 Red Robin
- 16 Romano's Macaroni Grill
- 17 Starbucks
- 18 Wells Fargo
- 19 Yard House





# 9301 TAMPA AVENUE

NORTHRIDGE, CALIFORNIA 91324



**FOR MORE INFORMATION, PLEASE CONTACT:**

**TODD WUSCHNIG**

*DIRECTOR*

12925 RIVERSIDE DRIVE, SUITE 201  
SHERMAN OAKS, CALIFORNIA 91423  
DIR: 818.455.8205  
LICENSE #: 01367230  
TWUSCHNIG@CHARLEDUNN.COM

**LAUREN NESMITH**

*ASSOCIATE*

100 WEST BROADWAY, SUITE 510  
GLENDALE, CALIFORNIA 91210  
DIR: 818.550.8200 EXT.105  
LICENSE #: 02040126  
L NESMITH@CHARLEDUNN.COM

Charles Dunn



LIC#01201641

Charles Dunn Company, Inc. These materials are based on information and content provided by others which we believe are accurate. No guarantee, warranty or representation is made by the Charles Dunn Company or its personnel, and all interested parties must independently verify its accuracy and completeness. As well, any projections, assumptions, opinion, or estimates are used for example only and do not represent the current or future performance of the identified property. Your tax, financial, legal and toxic substance advisors should conduct a careful investigation of the property and its suitability for your needs, including land use limitations.