

NW CORNER OF 4TH ST N & 22ND AVE N

425 22nd Ave N | St Petersburg, FL 33704



PROPERTY HIGHLIGHTS:

- 1,916 SF (Suite A) office and 1,371 SF retail available for lease in the highly desirable 4th St Business District
- Former TD Bank branch with double drive-thru lanes
- Excellent building, monument and pylon signage opportunities
- Recent exterior paint and LED light upgrades
- Corner location with access from both 4th St N and 22nd Ave N
- Join Athenian Gardens, Fantastic Sam's, SoHo Juice Company, Serenity Nail & Spa, Sacino's Formalwear and Kitchen Center Plus
- Frontage: 4th St N – 250 LF; 22nd Ave N – 416 LF

KEY DEMOS	1 MILE	3 MILES	5 MILES
POPULATION			
2019 Estimated Population	18,360	109,956	233,330
2019 Estimated Households	9,579	52,259	105,386
INCOME			
2019 Est. Avg HH Income	\$83,635	\$71,427	\$67,031
AGE			
Median Age	43	42	42
DAYTIME DEMOS			
Number of Businesses	884	7,270	11,489
Number of Employees	5,119	63,394	103,779
Total Daytime Population	10,818	100,893	182,679
TRAFFIC COUNTS			
22nd Ave N (E/W)	23,500 AADT		
4th St N (N/S)	33,500 AADT		



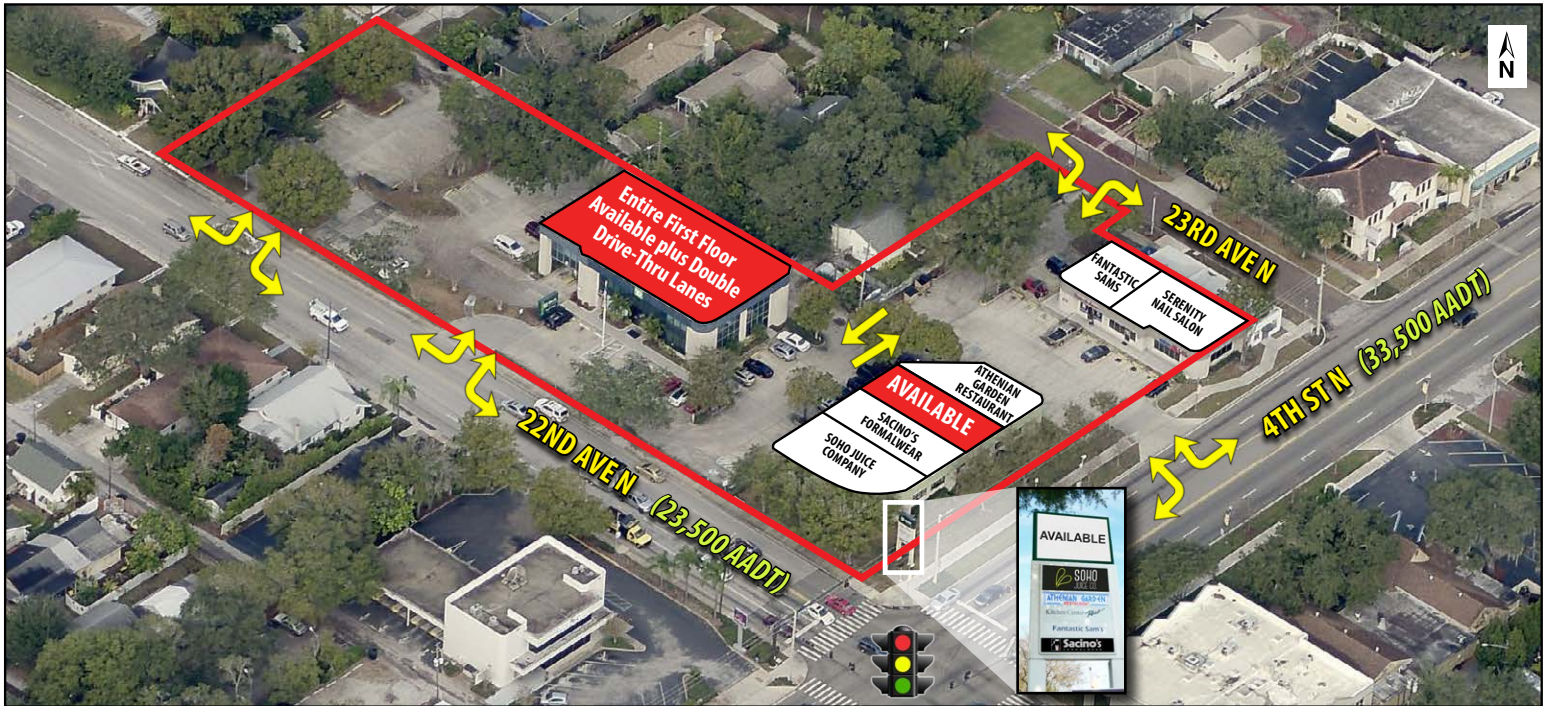
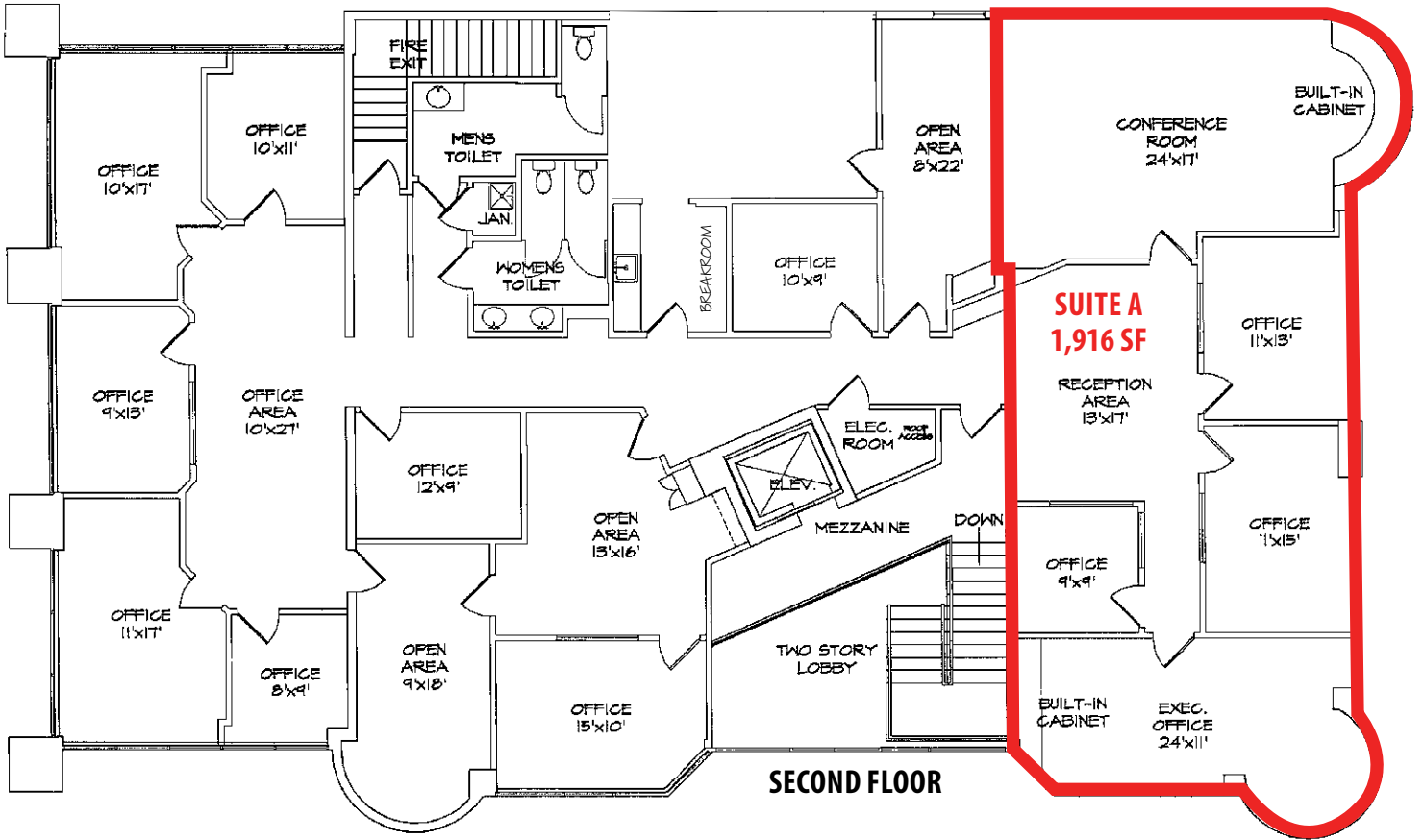
FOR LEASING INFORMATION:

Jason Aprile, CCIM
 813.960.8154 (O) | 813.532.6432 (C)
 japrile@rmcpg.com

8902 N Dale Mabry Hwy
 Tampa, FL 33614
 800.728.5379
 www.RMCPG.com

NW CORNER OF 4TH ST N & 22ND AVE N

425 22nd Ave N | St Petersburg, FL 33704



All information given herein is obtained from sources considered reliable. However, we are not responsible for misstatement of facts, errors, omissions, prior sale, withdrawal from market, modification of mortgage commitment, terms and considerations, or change in price without notice. The information supplied herein is for informational purposes only and shall not contain a warranty or assurance that said information is correct. Any person intending to rely upon the information supplied herein should verify said information independently. **UPDATED: 052819**



FOR LEASING INFORMATION:
Jason Aprile, CCM
813.960.8154 (O) | 813.532.6432 (C)
japrile@rmcpg.com

8902 N Dale Mabry Hwy
Tampa, FL 33614
800.728.5379
www.RMCPG.com