

5338 SE FOSTER ROAD

For Lease



Foster Road: 21,511 vehicles per day!

Iconic Foster-Powell neighborhood retail building offers unparalleled exposure and branding opportunity

FEATURES

4,206 total SF available

2,520 ground floor office/retail with kitchen

1,045 SF 2nd floor office space

641 SF basement/dry storage

Tremendous 2-story exposure for signage, custom mural branding

Lents URA grant program

Zoned CG (Commercial General)

Recently updated MEP

\$3,800/month MG

5338 SE Foster Road, Portland, OR

CONTACT

Mark Piscitelli

Vice President

503.721.2734

markp@kiddermathews.com

kiddermathews.com

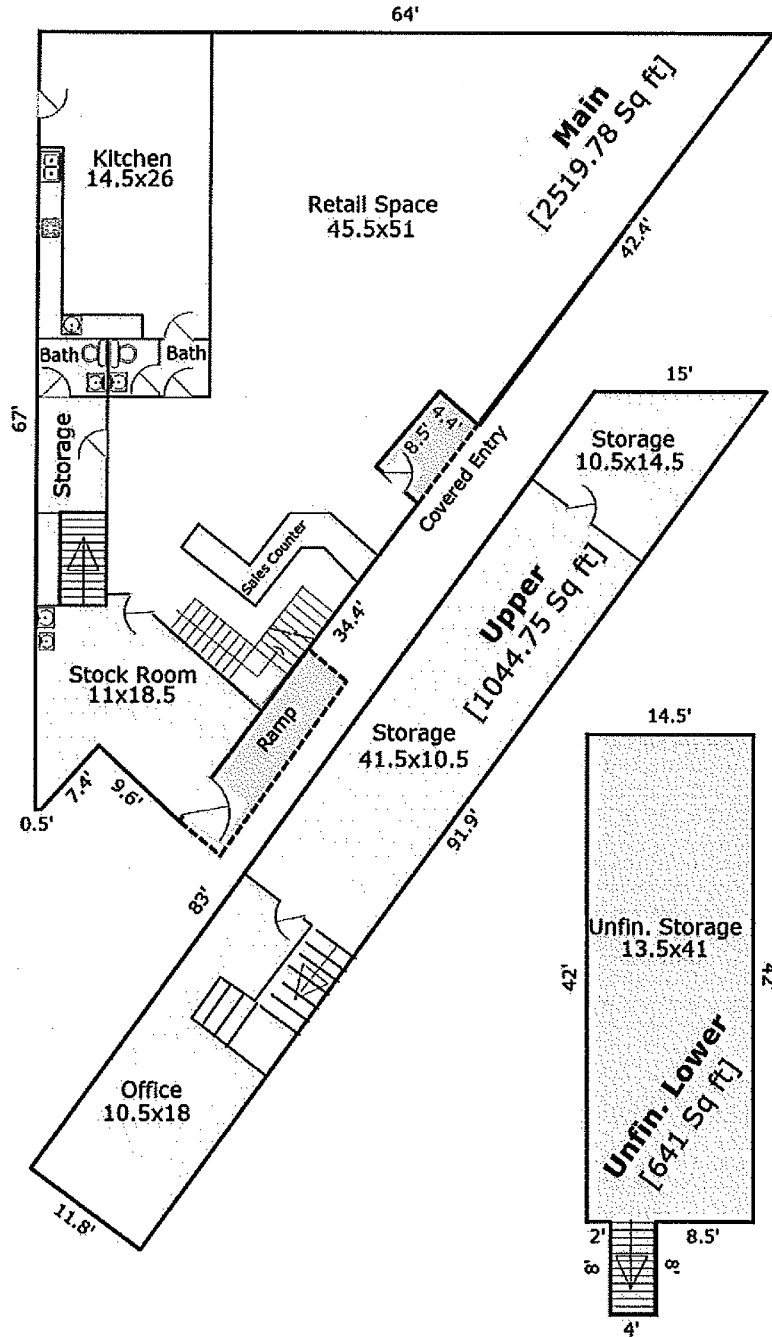
This information supplied herein is from sources we deem reliable. It is provided without any representation, warranty or guarantee, expressed or implied as to its accuracy. Prospective Buyer or Tenant should conduct an independent investigation and verification of all matters deemed to be material, including, but not limited to, statements of income and expenses. Consult your attorney, accountant, or other professional advisor.

km Kidder Mathews

5338 SE FOSTER ROAD

For Lease

LOCATION



CONTACT

Mark Piscitelli | 503.721.2734 | markp@kiddermathews.com | kiddermathews.com

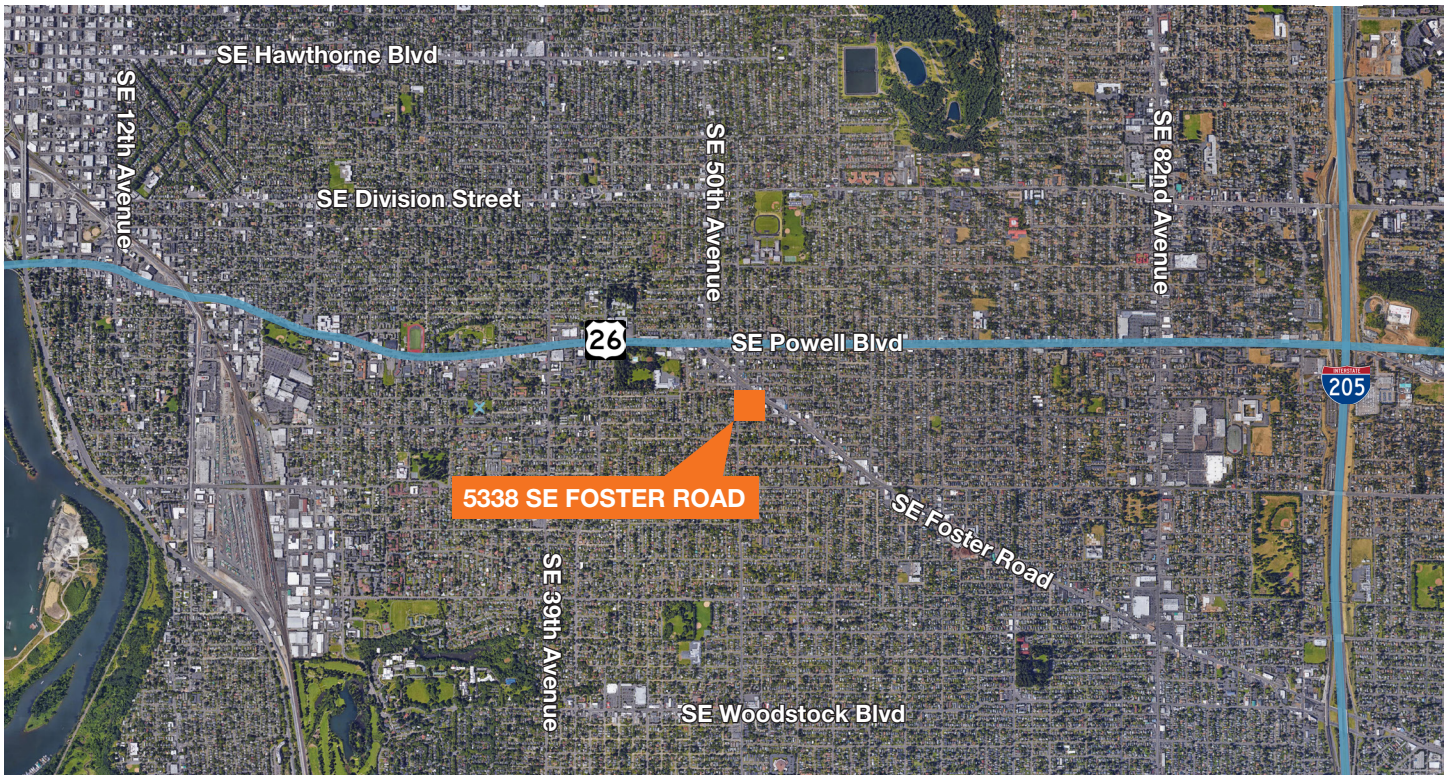
This information supplied herein is from sources we deem reliable. It is provided without any representation, warranty or guarantee, expressed or implied as to its accuracy. Prospective Buyer or Tenant should conduct an independent investigation and verification of all matters deemed to be material, including, but not limited to, statements of income and expenses. Consult your attorney, accountant, or other professional advisor.



5338 SE FOSTER ROAD

For Lease

LOCATION



NEIGHBORHOOD INFORMATION

Foster-Powell is a neighborhood in the Southeast section of Portland, Oregon. The triangular neighborhood is bounded by three major transit arteries: Powell Boulevard to the north, Foster Road to the south, and 82nd Avenue to the east.

In recent years, Portland has seen the potential value of the area and established it as an Urban Renewal Area, which allows the city to bond on future increases in property tax revenues to fund capital projects throughout the Lents Town Center Urban Renewal Area. Many new homes and businesses have been established and more are planned.

DEMOGRAPHICS

	1 mile	3 miles	5 miles
Population (2016)	27,139	198,187	482,086
Households	11,320	84,265	207,400
Est. Population Growth (2021)	28,404	208,876	509,240

CONTACT

Mark Piscitelli | 503.721.2734 | markp@kiddermathews.com | kiddermathews.com