

2111 Eisenhower Avenue Alexandria, VA

OFFICE SPACE AVAILABLE

For Leasing, contact::

Fred Zamer

Vice President, Leasing

E-mail: fzamer@simpsondev.com

Ann Waller

Leasing/Marketing

E-mail: awaller@simpsondev.com

Simpson Properties, Ltd.
2331 Mill Road
Suite 150
Alexandria, VA 22314
Phone: 703-299-0029
Fax: 703-299-0020

Simpson!
Real Estate Services

FEATURES

- **Prime location.** Immediately adjacent to US PTO, US Federal Courthouse, and National Science Foundation
- **10 Minutes to Ronald Reagan National Airport**
- **On-site Café & Bank**
- **Walking distance to Eisenhower & King Street Metro Stations , VRE, Hoffman Center**
- **Property Management On-site**



LOCATION: 2111 Eisenhower Ave.
Alexandria, VA

OFFICE SPACE AVAILABLE: 2nd Floor - 1,636 SF
3rd Floor - 1,532 SF -
3,113 SF

RENTAL RATE: \$26.00 PSF, Full Service

ON-SITE PARKING: 2/1,000 SF Available



2111 Eisenhower Avenue

Alexandria, VA

For Leasing, contact::

Fred Zamer

Vice President, Leasing

E-mail: fzamer@simpsondev.com

Ann Waller

Leasing/Marketing

E-mail: awaller@simpsondev.com

Simpson Properties, Ltd.

2331 Mill Road

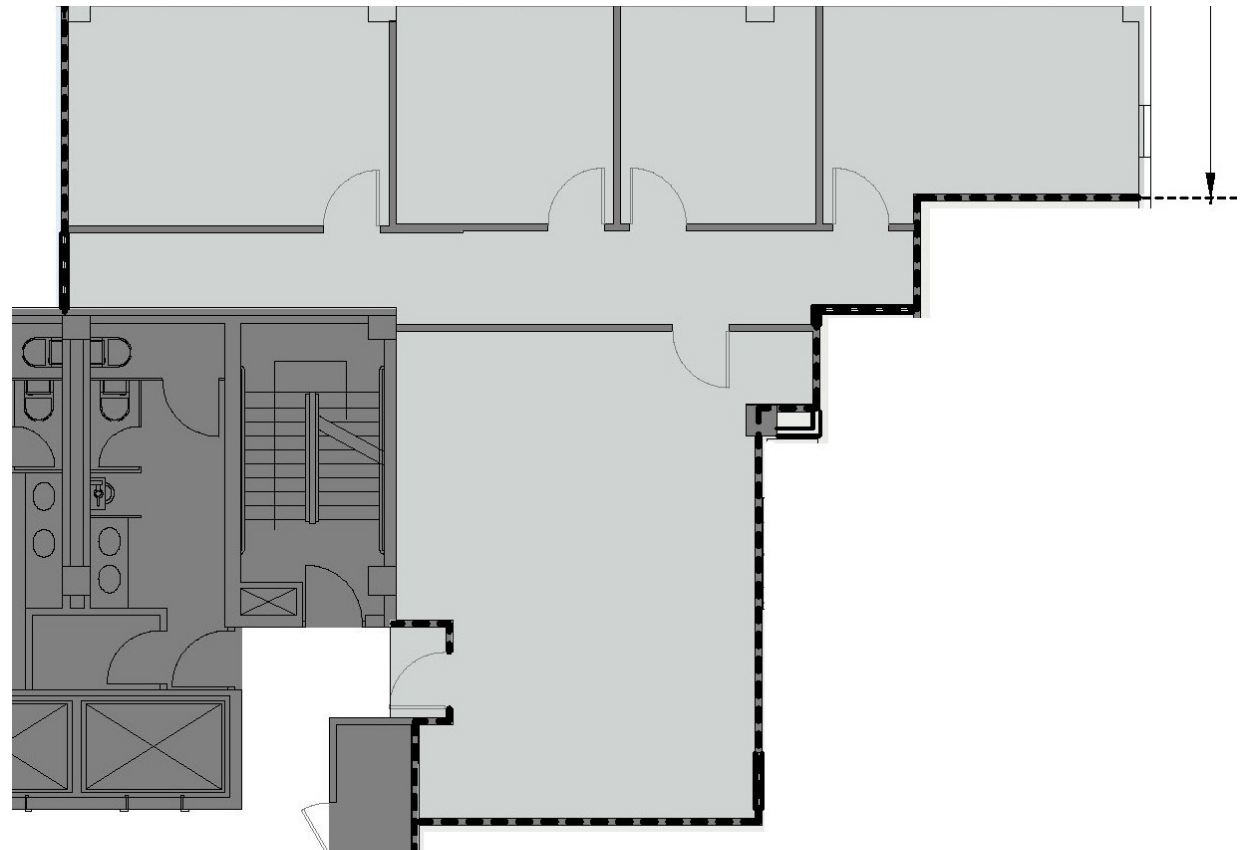
Suite 150

Alexandria, VA 22314

Phone: 703-299-0029

Fax: 703-299-0020

2ND FLOOR - 1,636 SF



2111 Eisenhower Avenue

Alexandria, VA

For Leasing, contact::

Fred Zamer

Vice President, Leasing

E-mail: fzamer@simpsondev.com

Ann Waller

Leasing/Marketing

E-mail: awaller@simpsondev.com

Simpson Properties, Ltd.

2331 Mill Road

Suite 150

Alexandria, VA 22314

Phone: 703-299-0029

Fax: 703-299-0020

3RD FLOOR - 1,532 SF - 3,113 SF

