

KENT EAST OFFICE CORPORATE PARK

FOR LEASE

21612 88TH SOUTH | KENT, WA 98031

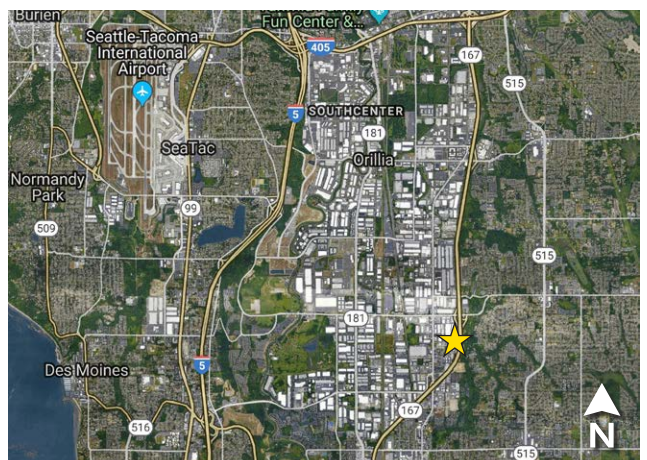
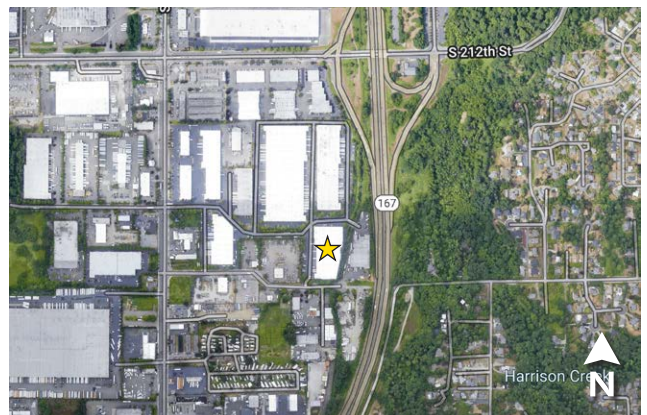


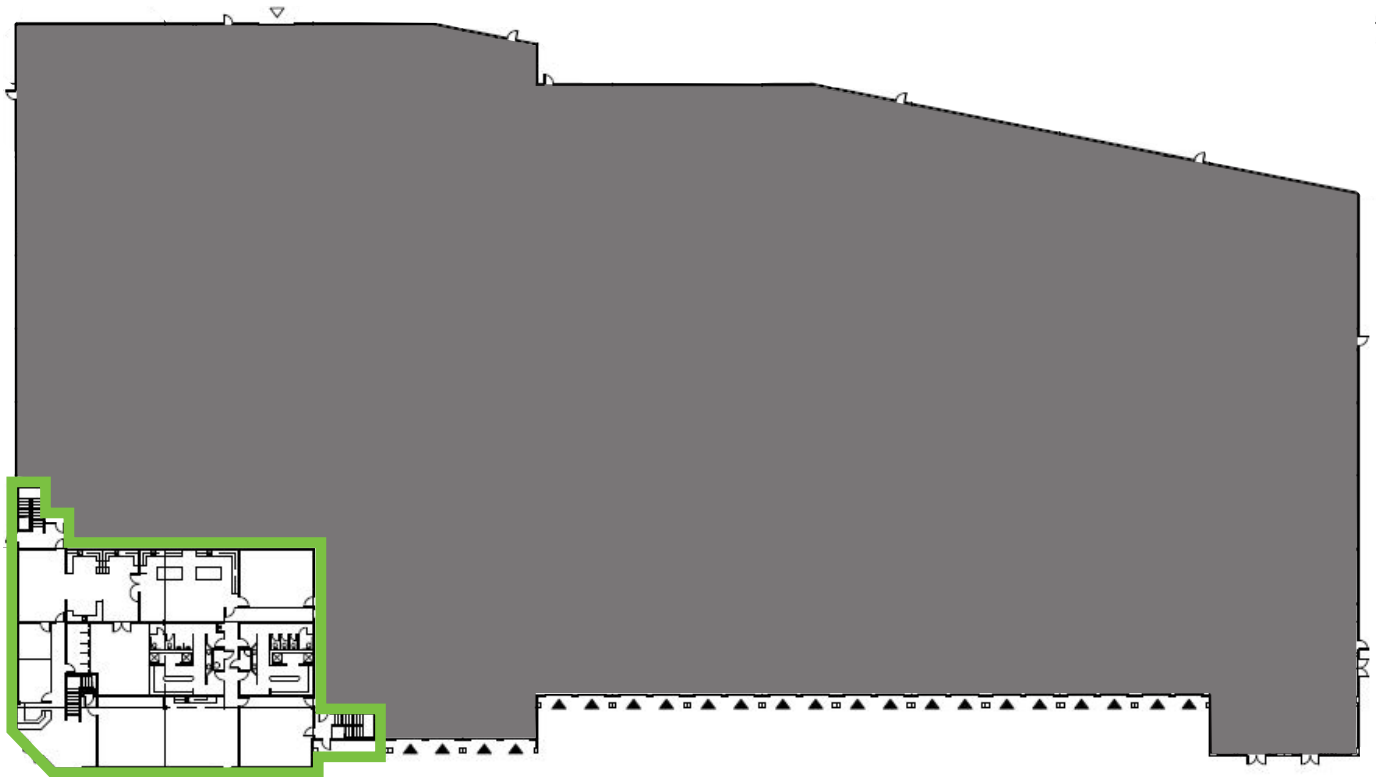


OFFICE HIGHLIGHTS

FOR LEASE

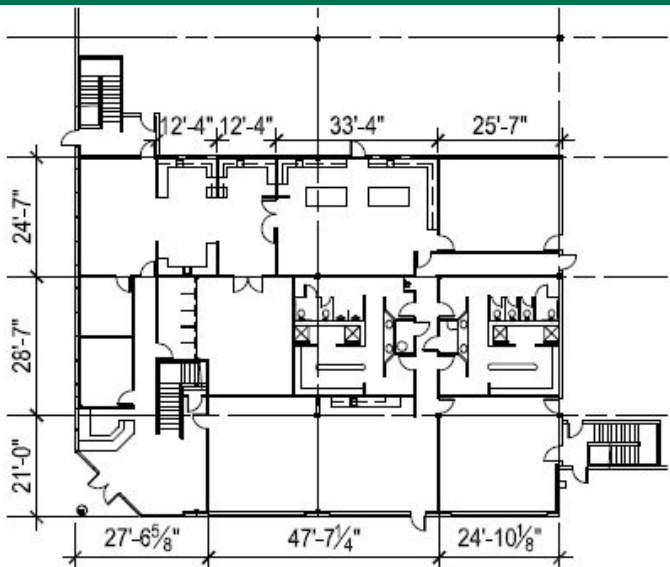
- **Floor Area**
 - 15,765 SF office (two-story)
- **Features**
 - Short term deals available
 - Below Market Rates
 - strong corporate image
 - Abundant Parking
 - Flexible Terms
 - Unbeatable SR
167 access
 - Professionally managed by CBRE





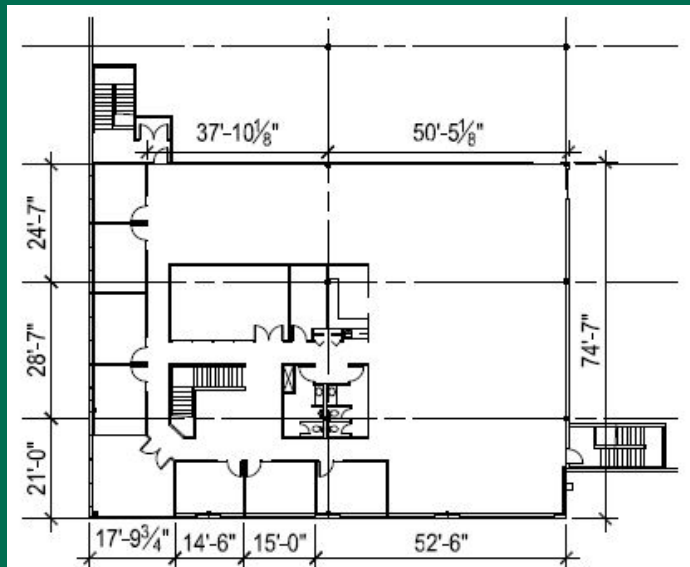
Overall Bldg. Plan

97,438 SQ. FT.



Office Plan

7,882 SQ. FT.



Mezz. Plan

7,883 SQ. FT.



KENT EAST CORPORATE PARK

JOHN GILLILAND

+1 206 442 2745
john.gilliland@cbre.com

ANDREW STARK

+1 206 442 2746
andrew.stark@cbre.com

CBRE, INC.

1420 5th Ave
Suite 1700
Seattle, WA 98101
+1 206 292 1600

CBRE

© 2019 CBRE, Inc. All rights reserved. This information has been obtained from sources believed reliable, but has not been verified for accuracy or completeness. You should conduct a careful, independent investigation of the property and verify all information. Any reliance on this information is solely at your own risk. CBRE and the CBRE logo are service marks of CBRE, Inc. All other marks displayed on this document are the property of their respective owners, and the use of such logos does not imply any affiliation with or endorsement of CBRE. Photos herein are the property of their respective owners. Use of these images without the express written consent of the owner is prohibited. 09.19.19