

# KEY BANK BUILDING

10655 NE 4<sup>TH</sup> STREET • BELLEVUE, WA



For further information please contact exclusive leasing agents:

**MATT SCHRECK**

425.646.5232

[schreck@broderickgroup.com](mailto:schreck@broderickgroup.com)

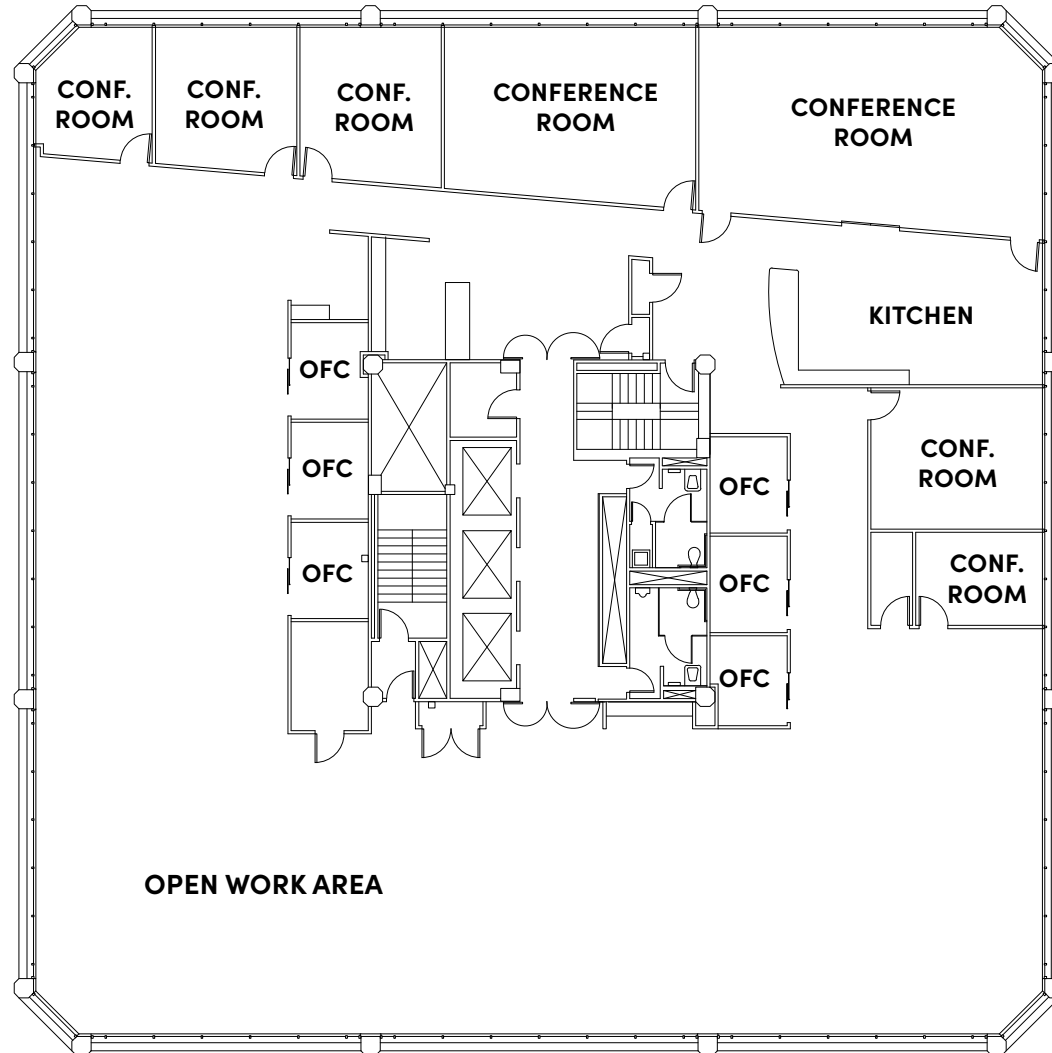
**COLIN TANIGAWA**

425.274.4283

[tanigawa@broderickgroup.com](mailto:tanigawa@broderickgroup.com)



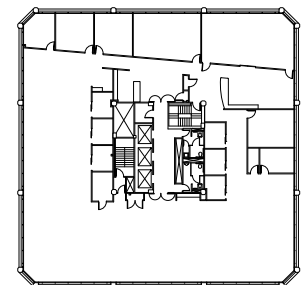
[CLICK TO VIEW VIRTUAL TOUR](#)



## SUITE 400 11,518 SF

- Full Floor Opportunity
- Private offices
- Conference rooms
- Open work area
- Kitchen
- Reception area
- Furniture can be included
- Available Now

[SEE ENLARGED FLOOR PLAN](#)



[↑ BACK TO AVAILABLE](#)

# KEY BANK BUILDING

10655 NE 4<sup>TH</sup> STREET • BELLEVUE, WA



For further information please contact exclusive leasing agents:

**MATT SCHRECK**

425.646.5232

[schreck@broderickgroup.com](mailto:schreck@broderickgroup.com)

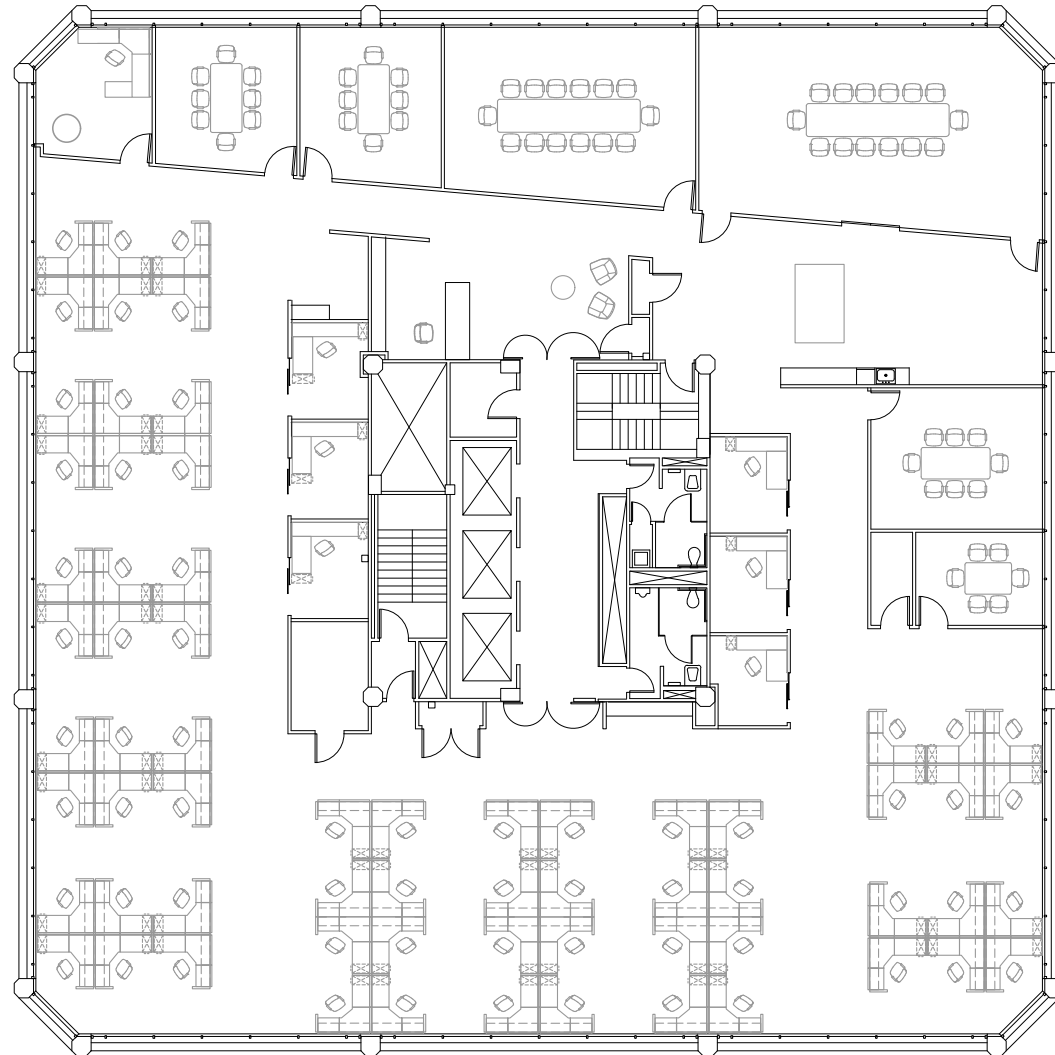
**COLIN TANIGAWA**

425.274.4283

[tanigawa@broderickgroup.com](mailto:tanigawa@broderickgroup.com)



[CLICK TO VIEW VIRTUAL TOUR](#)



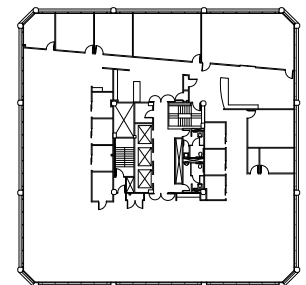
## SUITE 400

11,518 SF

### FURNITURE PLAN

- Full Floor Opportunity
- 66 Workstations
- 7 Conference rooms
- 6 Interior offices
- Furniture can be included

[SEE ENLARGED FLOOR PLAN](#)



[↑ BACK TO AVAILABLE](#)