

Prime Tribeca Store for Lease



Ground: Approx. 2,200rsf

Basement: Approx. 500sf

Term: 5 years

Rent: \$16,000/mo

Possession: Immediate

Description: Former gallery/artist studio. Suitable for dry/quiet use.

Hardwood floors. Approx. 10'6" finished ceilings. C/A/C. Private restrooms and shower in lower level.

Tenant responsible for additional approx. \$750/mo in RET and heat passthroughs.

Nearby galleries include Postmasters, Bortolami, James Cohan, Ortuzar Projects among others. Neighbors include Steven Alan, R&Company modern furniture, Twenty First Gallery, James Perse, Rag & Bone.

Contact:

Nathan Stange 212-343-1909 x13
nathan@susanpenzner.com

Shown by appointment only

Susan Penzner 212-343-1909x11
Susan@susanpenzner.com

89 Franklin Street

SUSAN PENZNER Real Estate Exclusive



No representation is made as to the accuracy of any information furnished. All square footage is approximate and based on gross square footage. Offer subject to errors, omissions, change in price, prior sale, and/or withdrawal without notice.

89 Franklin Street

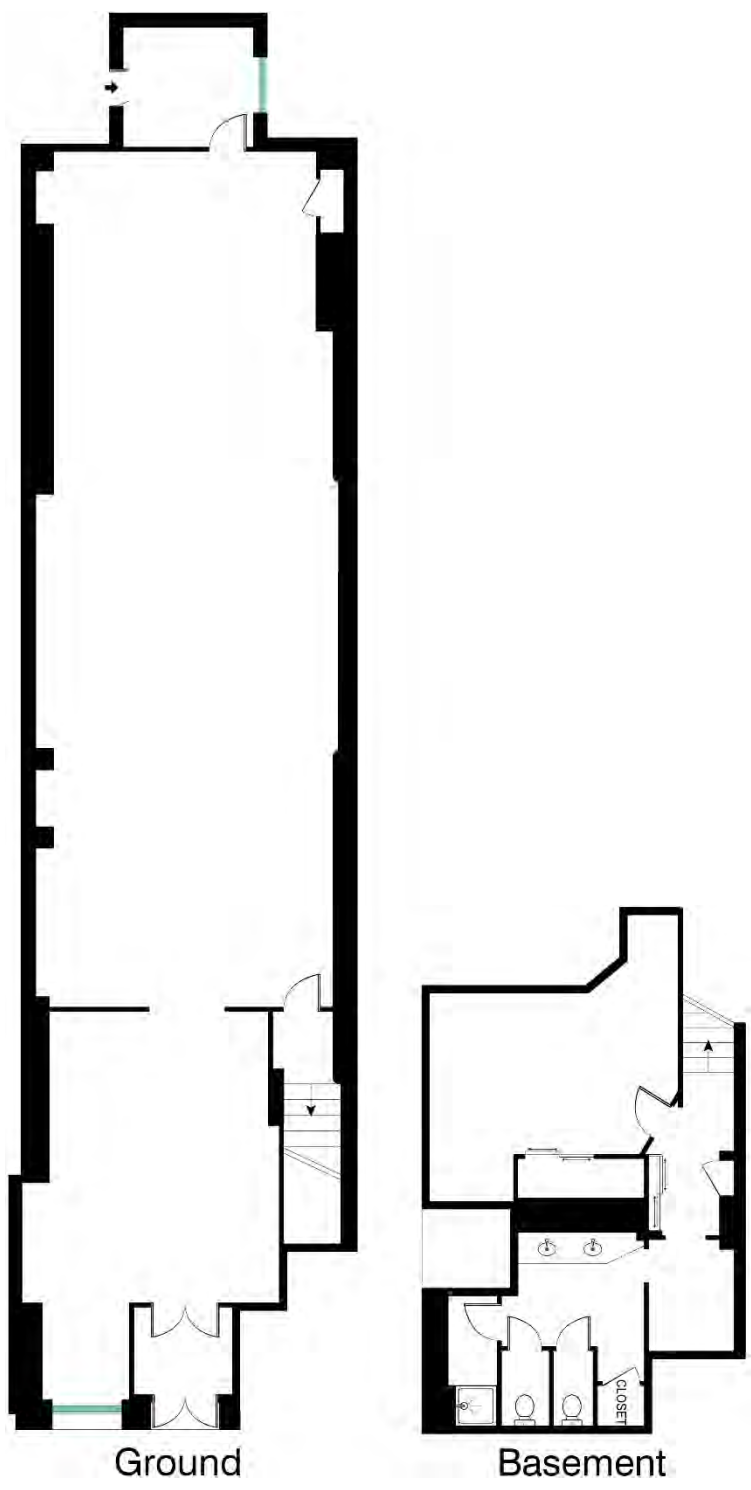
SUSAN PENZNER Real Estate Exclusive



No representation is made as to the accuracy of any information furnished. All square footage is approximate and based on gross square footage. Offer subject to errors, omissions, change in price, prior sale, and/or withdrawal without notice.

89 Franklin Street

SUSAN PENZNER Real Estate Exclusive



No representation is made as to the accuracy of any information furnished. All square footage is approximate and based on gross square footage. Offer subject to errors, omissions, change in price, prior sale, and/or withdrawal without notice.