

OFFICE / WAREHOUSE

FOR LEASE – BUILD TO SUIT

35252 Highway 30, Geismar, LA



20,000 SF Available

12,000 SF Available

Presented by:

Ty Gose, SIOR, CCIM
+1 225 247 3770
ty@latterblum.com

Kelly Allen, NAIOP
+1 225 614 5258
kallen@latterblum.com



Flexitallic

Highway 30

Talon Drive

Carson Drive



**20,000 SF
AVAILABLE**

**12,000 SF
AVAILABLE**

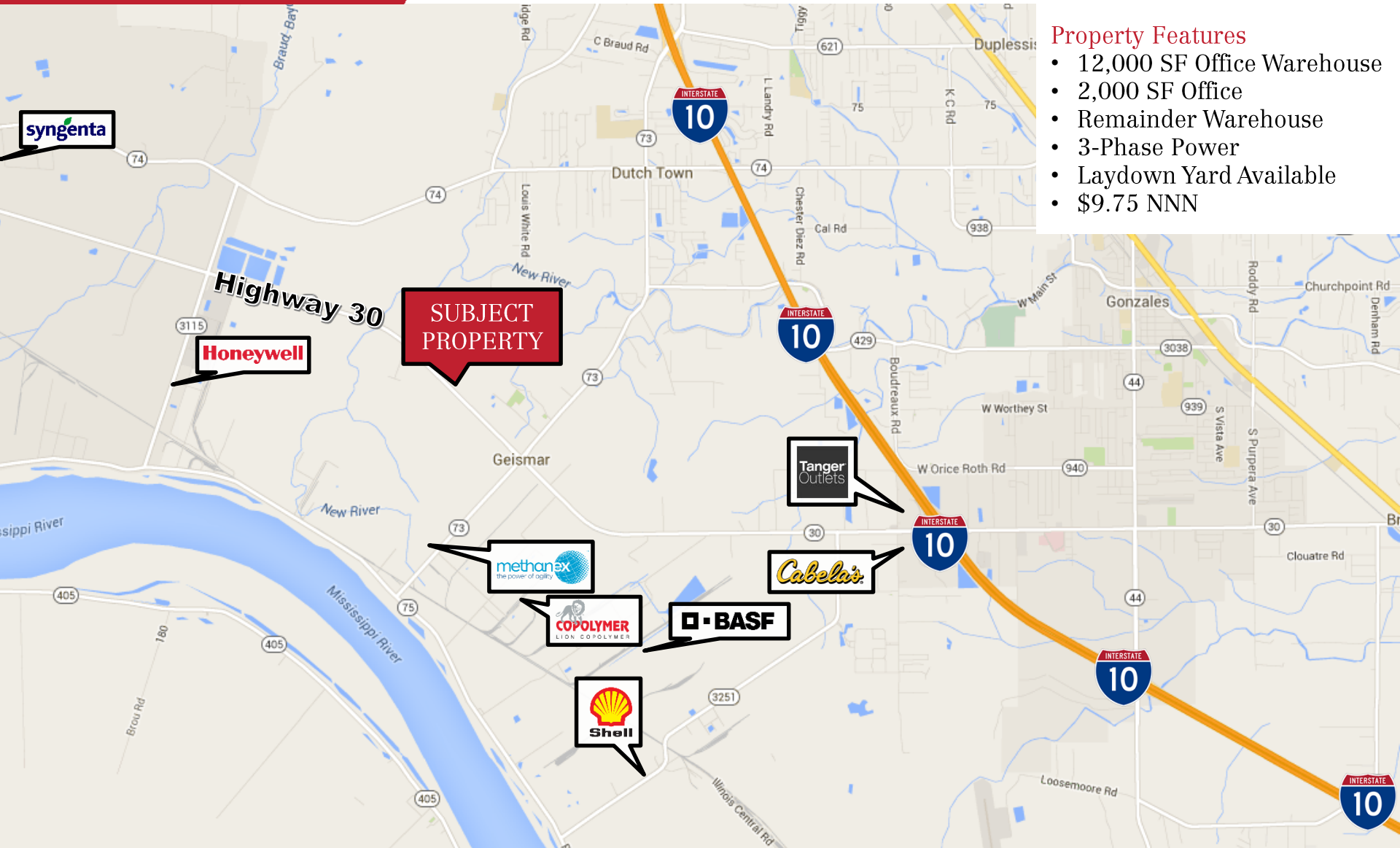


Call
225.247.3770
For More Info

Nal Letter & Blum

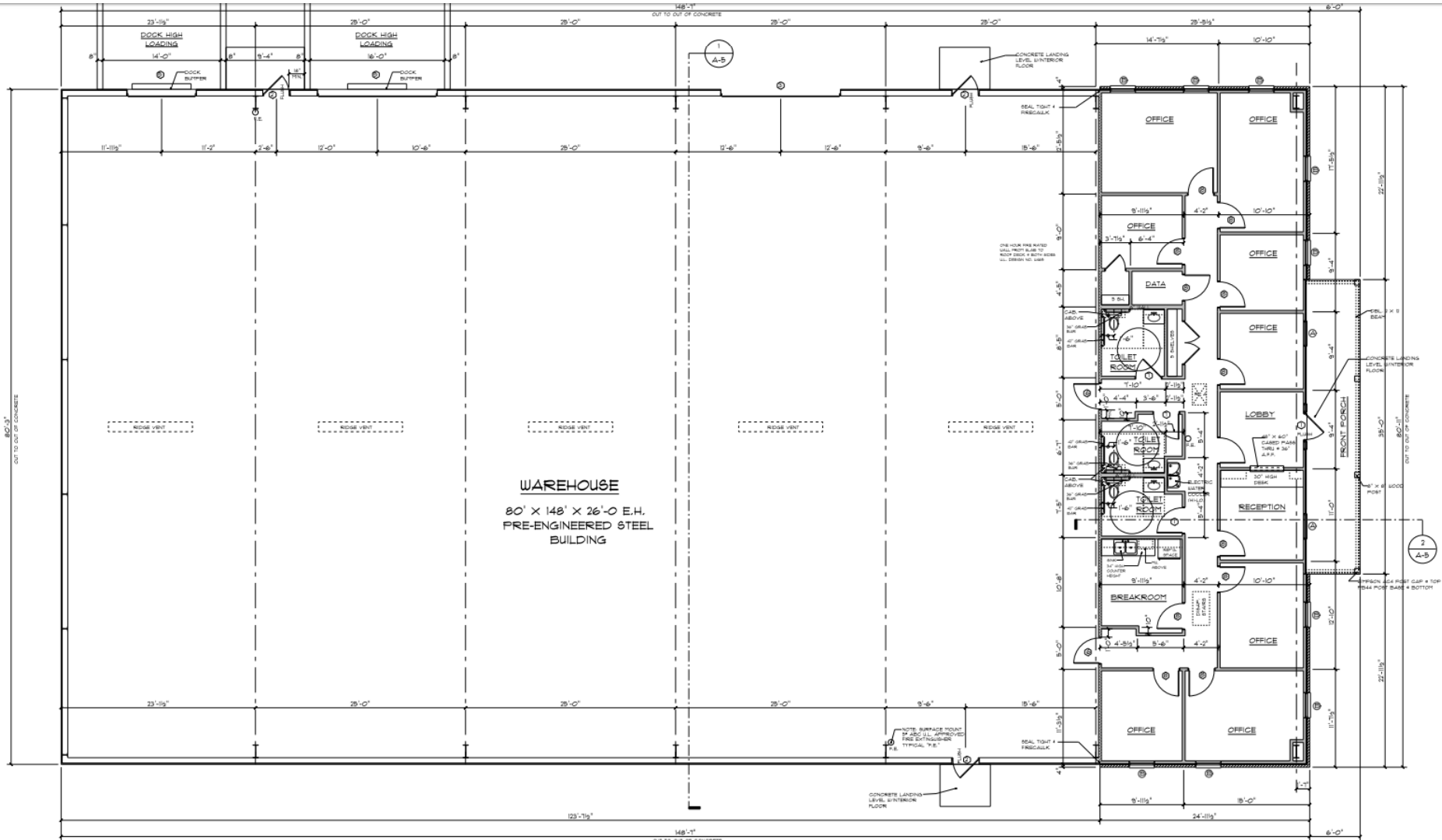
OFFICE / WAREHOUSE
FOR LEASE – BUILD TO SUIT
35252 Highway 30, Geismar, LA

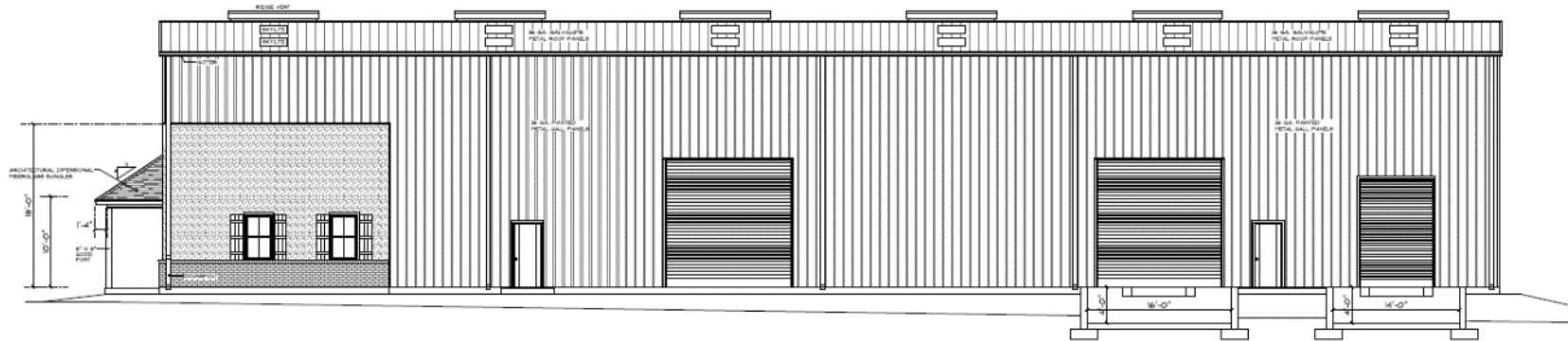
Property Location



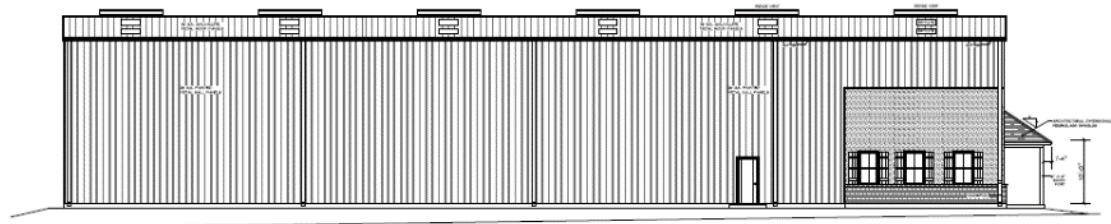
Property Features

- 12,000 SF Office Warehouse
- 2,000 SF Office
- Remainder Warehouse
- 3-Phase Power
- Laydown Yard Available
- \$9.75 NNN





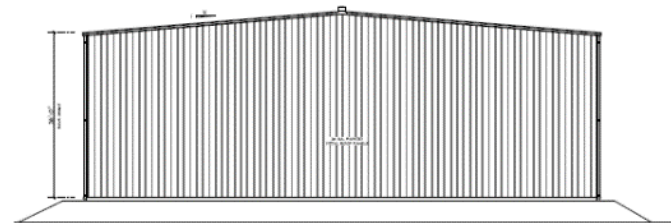
4 RIGHT SIDE ELEVATION
 SCALE: 3/16" = 1'-0"



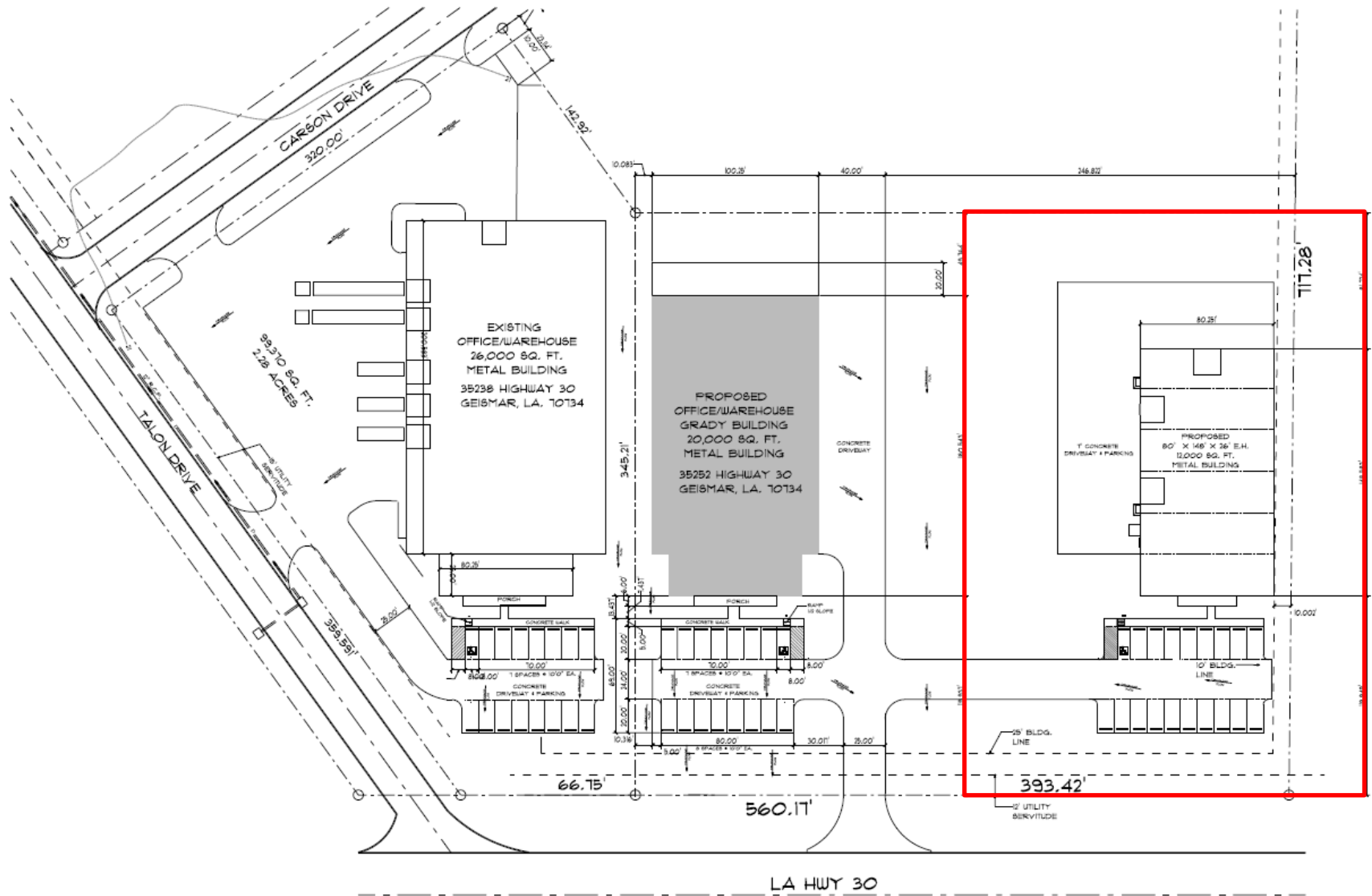
3 LEFT SIDE ELEVATION
 SCALE: 1/8" = 1'-0"



1 FRONT ELEVATION
 SCALE: 3/16" = 1'-0"



2 REAR ELEVATION
 SCALE: 1/8" = 1'-0"





TALON



- Mauser USA
- Flexitallic
- Optimal
- HMT LLC
- ISCO
- Versa



NAILatter & Blum

NAI Latter & Blum
1700 City Farm Drive
Baton Rouge, LA 70806
+1 225 295 0800

Marketing Updated 10/4/2018