



C. BRENNER, INC.

COMMERCIAL REAL ESTATE



Prime Winter Park Retail Site

\$749,000

7651 University Blvd,
Winter Park, FL 32792



- .74 acre fully buildable retail site by fast-growing intersection
- 150' frontage on major 6 lane road (University Blvd = 40,000 cars per day)
- Direct ingress/egress from University Blvd
- Utilities and 30' pylon sign in place
- 1,400 SF drive-thru can be repurposed or expanded
- Join nearby retailers Publix, Target, Lucky's Market, and many others
- Minutes from University of Central Florida and Full Sail University
- Could be combined with adjacent lot for total of 1.48 acres

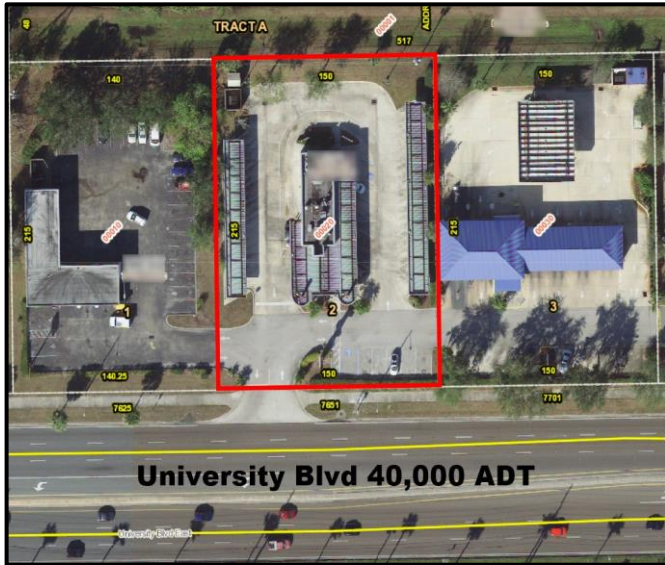
Ben Brenner
Lic. RE Broker
C. Brenner, Inc.



Cell: 407-970-6447
Office: 407-677-1700

Email: bbrenner@cbrenner.com
Website: cbrenner.com

3586 Aloma Ave, Suite 5, Winter Park, FL 32792



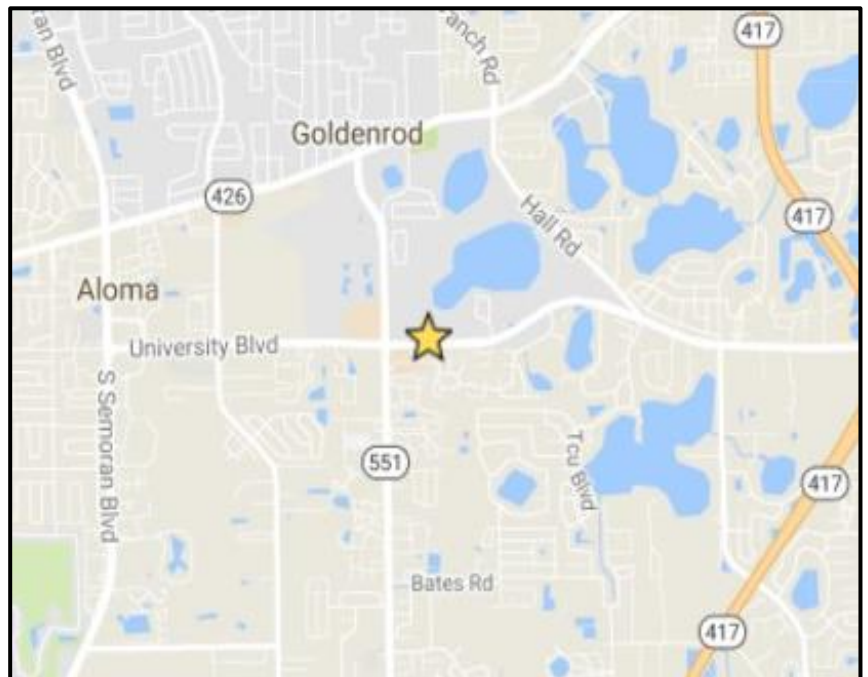
PROPERTY SPECIFICATIONS

Address: 7651 University Blvd, Winter Park, FL 32792
 Lot Size: 0.74 acres (32,250 SF)
 Frontage: 150' University Blvd
 Zoning: C-1
 Utilities: Water, electric, sewer in place
 Retention: Off-site

MARKET PROFILE

3 mile population: 100,626
 5 mile population: 264,493
 5 mile Avg HH income: \$61,238

Call Broker For Sales Price!



Ben Brenner
 Lic. RE Broker
 C. Brenner, Inc.



Cell: 407-970-6447
 Office: 407-677-1700

Email: bbrenner@cbrenner.com
 Website: cbrenner.com

3586 Aloma Ave, Suite 5, Winter Park, FL 32792