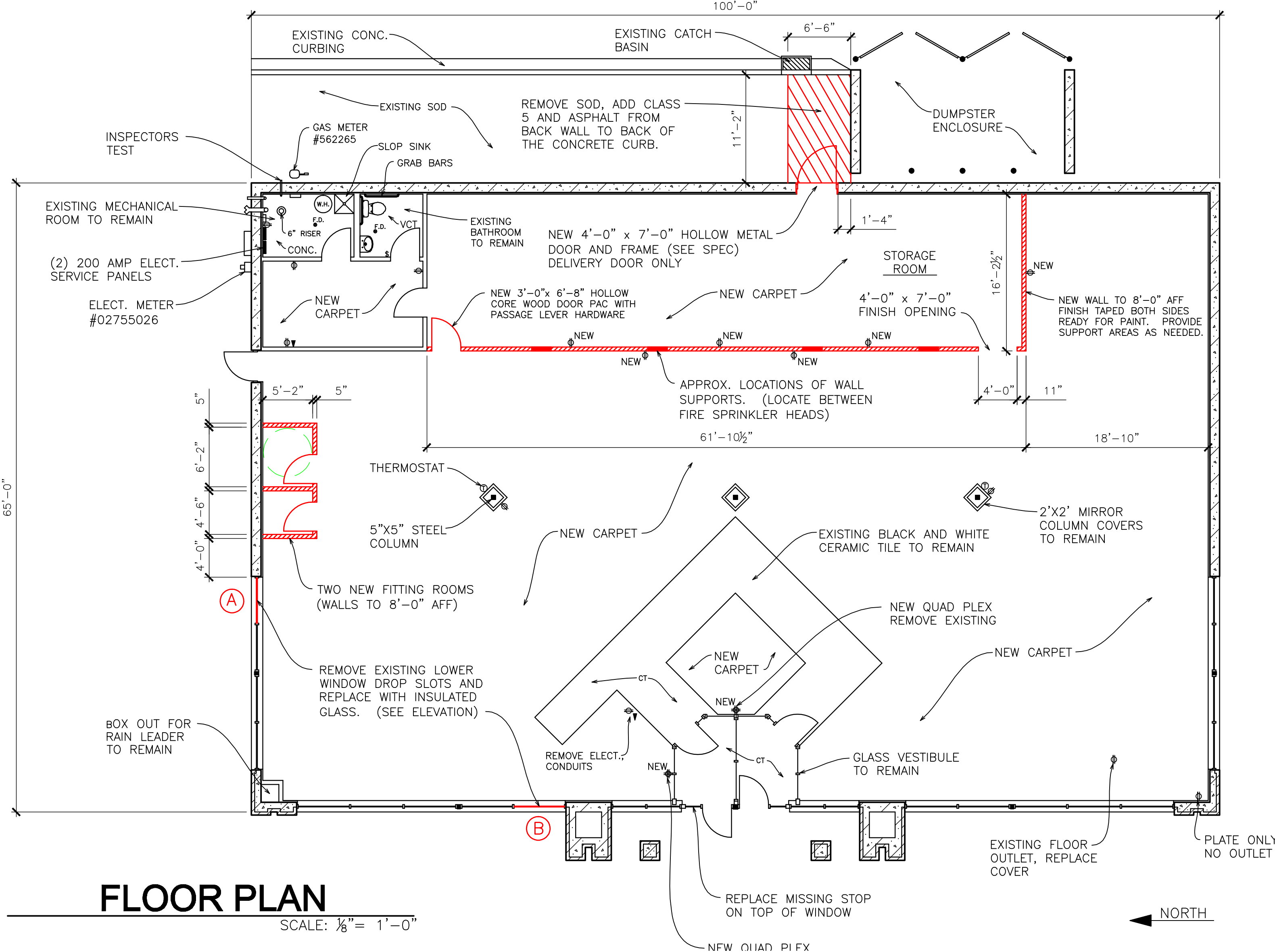


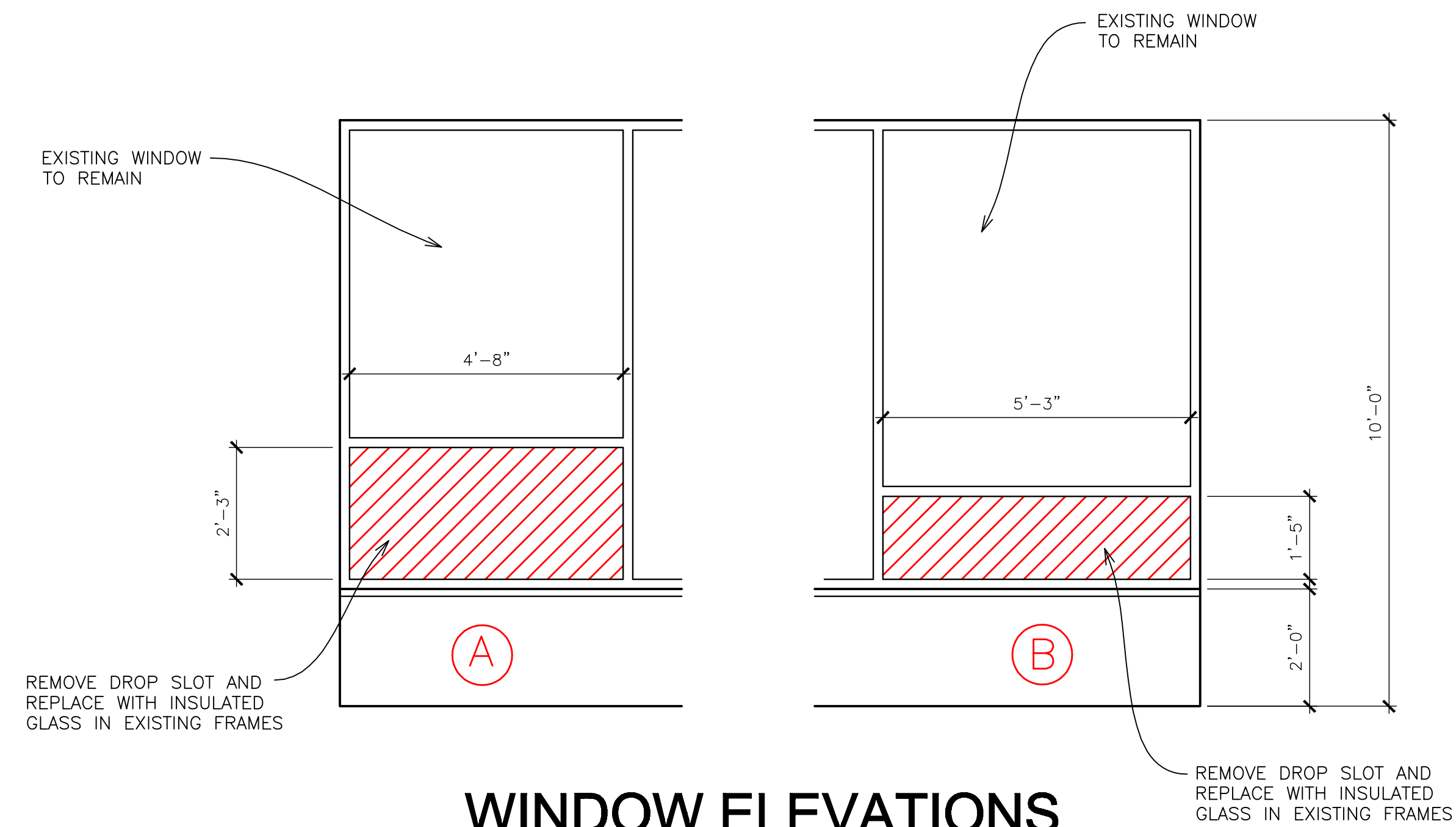
EXISTING CEILING PLAN

SCALE: 1/8" = 1'-0"



FLOOR PLAN

SCALE: 1/8" = 1'-0"



WINDOW ELEVATIONS

SCALE: 1/2" = 1'-0"

DECK HEIGHT
15'-9" AFF

EXCAVATION / PAVING

- FURNISH AND INSTALL NEW BLACKTOP RAMP FROM THE NEW BACK DOOR TO THE EXISTING CONCRETE CURB SHOWN AS HATCHED ON THE FLOOR PLAN. REMOVE THE SOD, ADD CLASS 5 AND PAVING. (APPROX. 12" SLOPE FROM THE CURB TO BUILDING). LAWN SPRINKLER REPAIRS AS NEEDED BY OTHERS.

MASONRY

- FURNISH AND INSTALL A NEW 4'x4"-7'x4" MASONRY OPENING THROUGH THE BLOCK WALL IN THE BACK. INCLUDE STEEL LINTEL WITH REINFORCED JAMBS AS REQUIRED. PATCHING OF CONCRETE AT THE THRESHOLD, DOOR AND FRAME TO BE INSTALLED BY OTHERS.

EXTERIOR DOOR

- FURNISH AND INSTALL A NEW 4'-0" x 7'-0" HOLLOW METAL BACK DOOR WITH A HOLLOW METAL WELDED FRAME WITH 4" HEAD. THE DOOR IS TO HAVE BUTT HINGES, SCHLAGE LEVER KEY ENTRY HARDWARE, DOOR CLOSER, THRESHOLD, SWEEP, AND WEATHERSTRIPPING.

CARPENTRY

- FURNISH AND INSTALL INTERIOR WALL FOR THE NEW STORAGE ROOM TO 8'-0" AFF. USE 3 5/8" STEEL STUDS AT 16" O.C., 5/8" TYPE 'X' SHEET ROCK ON BOTH SIDES FINISH TAPED AND SANDED. INCLUDE ONE 3'-0" x 6'-8" HOLLOW CORE WOOD DOOR PACK WITH A SCHLAGE LEVER PASSAGE HARDWARE. INCLUDE SUPPORTS TO THE GRID OR THROUGH THE CEILING AS SHOWN. VERIFY SUPPORT LOCATIONS PRIOR TO CONSTRUCTION.
- FURNISH AND INSTALL TWO NEW FITTING ROOMS TO 8'-0" AFF AS SHOWN. USE 3 5/8" STEEL STUDS 16" O.C., 5/8" TYPE 'X' SHEET ROCK, FINISH TAPED AND SANDED ON BOTH SIDES. DOORS TO BE 3'-0" x 6'-8" LOUVERED WOOD DOORS WITH LEVER PRIVACY LOCK, DOOR TO START AT 10" +/- ABOVE THE FLOOR, WITH WOOD FRAME.
- FURNISH AND INSTALL PATCHING OF THE INSULATION AND SHEET ROCK AFTER THE NEW BACK DOOR INSTALLATION.

GLAZING

- PROVIDE DEMOLITION OF TWO EXISTING WINDOW DROP SLOTS AND FURNISH AND INSTALL NEW INSULATED GLASS IN EXISTING FRAMES. SEE ELEVATION FOR APPROXIMATE SIZES. THE WINDOW ABOVE EACH LOCATION IS TO REMAIN.
- FURNISH AND INSTALL A NEW ALUMINUM WINDOW STOP FOR THE TOP OF THE WINDOW NEXT TO THE DOOR AS SHOWN.

CARPETING

- FURNISH AND INSTALL NEW CARPETING IN AREAS AS SHOWN. USE PHILADELPHIA, WINCHESTER, 49510 STINGRAY.
- FURNISH AND INSTALL NEW 4" COVE VINYL BASE AT NEW CARPETING AREAS. USE JOHNSONITE 20-CHARCOAL.
- REPLACE TRANSITION STRIP BETWEEN THE CARPET AND THE BLACK AND WHITE CERAMIC TILE IN FRONT.
- ANY FLOOR PREP TO BE DONE AT TIME AND MATERIAL AS APPROVED BY PASTER ENTERPRISES.

ELECTRICAL

- FURNISH AND INSTALL 6 NEW OUTLETS IN NEW WALL AS SHOWN.
- INSTALL 2 QUAD PLEX OUTLETS ON FRONT AND SIDE OF VESTIBULE CLEAN UP EXISTING ELECTRICAL. ALSO REMOVE ELECTRICAL AND CONDUITS ON SIDE OF BLACK AND WHITE TILE AS SHOWN.
- INSTALL A NEW COVER FOR THE EXISTING FLOOR OUTLET IN THE FRONT SOUTH CORNER.

REVISED 6-17-11

PASTER ENTERPRISES
2227 UNIVERSITY AVE.
ST. PAUL, MN 55114

ACCAP THRIFT STORE
9201 SOUTH HWY. DRIVE
LEXINGTON, MN 55014

NORTHWAY SHOPPING CENTER

BY: JRE

DATE: 2-22-11

SCALE: NOTED

1 OF 1