



STUNNING LAKE VIEWS!

CONTACT



AL MARINO SIOR
208.947.0811
al@tokcommercial.com

UPDATED: 11.7.2022

HIGHLIGHTS



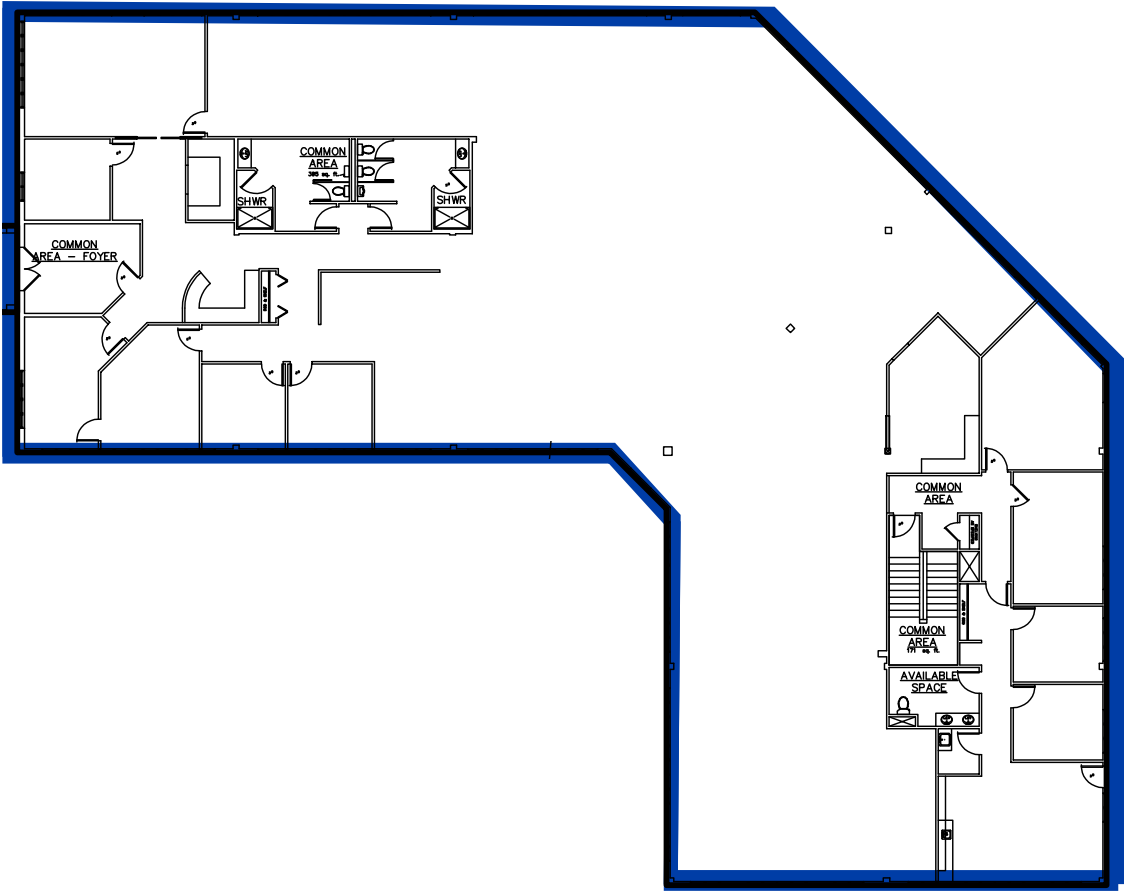
- Extensive renovations including parking lot, pylon signs, exterior paint, walkways, spec interiors, and landscaping.
- Excellent access to Downtown Boise.
- Attractive, well-landscaped building with lake and foothill views.
- Convenient location for employees and clientele.

DETAILS



SUBMARKET:	NORTH BOISE
BLDG TYPE:	OFFICE RETAIL
BLDG SIZE:	76,122 SF
# OF FLOORS:	2
PARKING:	AMPLE
LEASE TERM:	3-5 YEARS
LEASE TYPE:	FULL SERVICE
AVAILABLE:	IMMEDIATELY

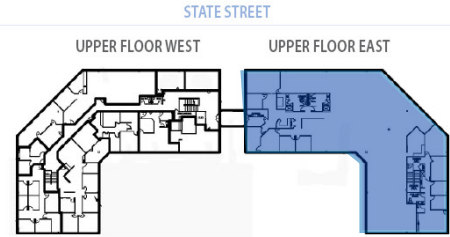
FLOOR PLAN



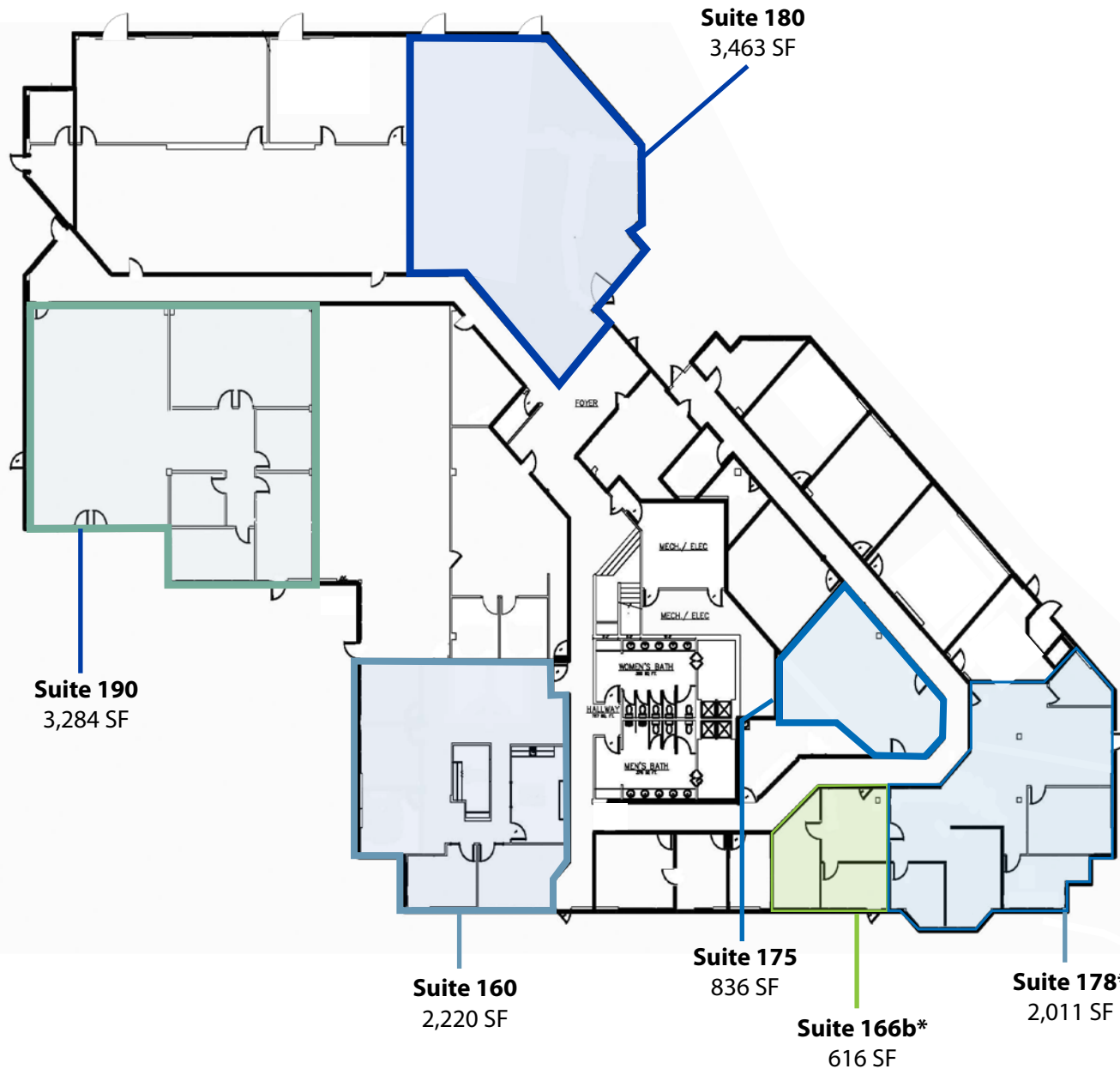
UPPER FLOOR EAST

Space	RSF	Rate
254	13,573 SF	\$18.00/SF

FLOOR LOCATION



FLOOR PLAN

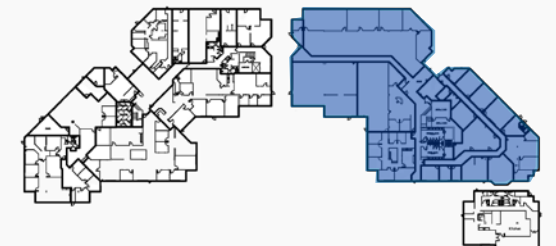


EAST FIRST FLOOR

Space	RSF	Rate
160	2,220 SF	\$18.00/SF
175	836 SF	\$14.00/SF
166b*	616 SF	\$18.00/SF
178*	2,011 SF	\$18.00/SF
180	3,463 SF	\$18.00/SF
190	3,284 SF	\$20.00/SF

* can be combined for 2,627 SF

FLOOR LOCATION





PHOTOS



TOK
COMMERCIAL



PHOTOS

TOKCOMMERCIAL.COM

LAKEHARBOR

SILVER LAKE



EDGEWATER
APARTMENTS

COLLISTER DR

STATE STREET

B'S ACE HARDWARE

COLLISTER CENTER



3.5 MILES
TO 11 MINS
DOWNTOWN