

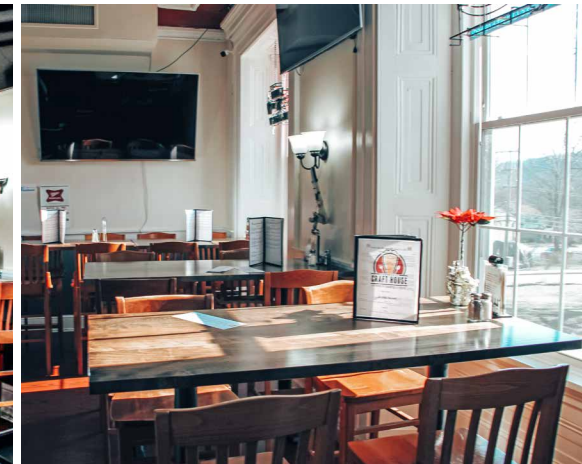
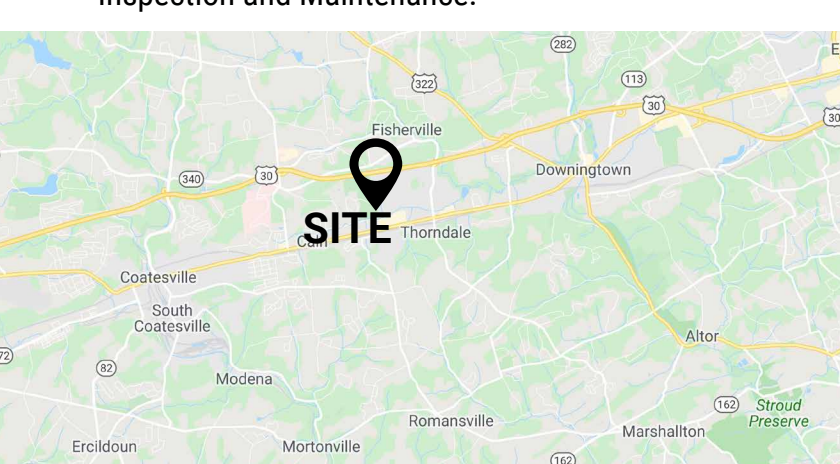
± 12,000 SF TURN-KEY RESTAURANT

300 North Bailey Road | Thorndale, PA 19372

FOR SALE:
\$1,650,000

PROPERTY FEATURES

- ✓ ± 12,000 SF Turn-key Restaurant on ± 3.3 Acres
- ✓ Conveniently Located In Front Of Ingleside Golf Course
- ✓ Building can be subdivided
- ✓ Approx. 234 Seats
- ✓ ± 90 Parking Spaces & Plenty of Outdoor Space
- ✓ All FF&E Included
- ✓ Chester County "R" Liquor License Included
- ✓ HVAC, Roof, Electric, Windows and Security Systems Replaced and/or Updated
- ✓ All Equipment Is In Great Condition with Routine Inspection and Maintenance.



ZOMMICK MCMAHON
COMMERCIAL REAL ESTATE

CONTACT US

JAMES PINCKNEY

Phone: 610.359.1100

Cell: 610.453.2569

Email: jpinckney@zmcre.com

TESS SCOTT

Phone: 610.359.1100

Cell: 610.401.3453

Email: tscott@zmcre.com

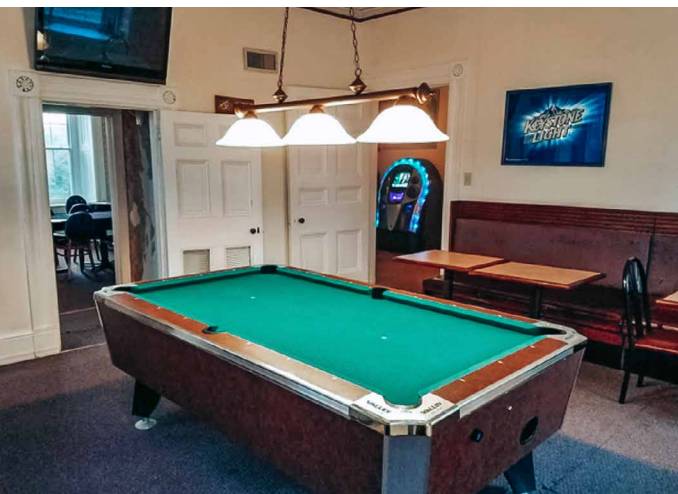
1306 Wilmington Pike, Suite A-2

West Chester, PA 19382

610.359.1100

www.zmcre.com

PROPERTY PHOTOS: 300 NORTH BAILEY ROAD, THORNDALE, PA




ZOMMICK MCMAHON
COMMERCIAL REAL ESTATE

CONTACT US

JAMES PINCKNEY

Phone: 610.359.1100

Cell: 610.453.2569

Email: jpinckney@zmcre.com

TESS SCOTT

Phone: 610.359.1100

Cell: 610.401.3453

Email: tscott@zmcre.com

1306 Wilmington Pike, Suite A-2

West Chester, PA 19382

610.359.1100

www.zmcre.com

MARKET AERIAL: 300 NORTH BAILEY ROAD, THORNDALE, PA



CONTACT US

JAMES PINCKNEY

Phone: 610.359.1100

Cell: 610.453.2569

Email: jpinckney@zmcre.com

TESS SCOTT

Phone: 610.359.1100

Cell: 610.401.3453

Email: tscott@zmcre.com

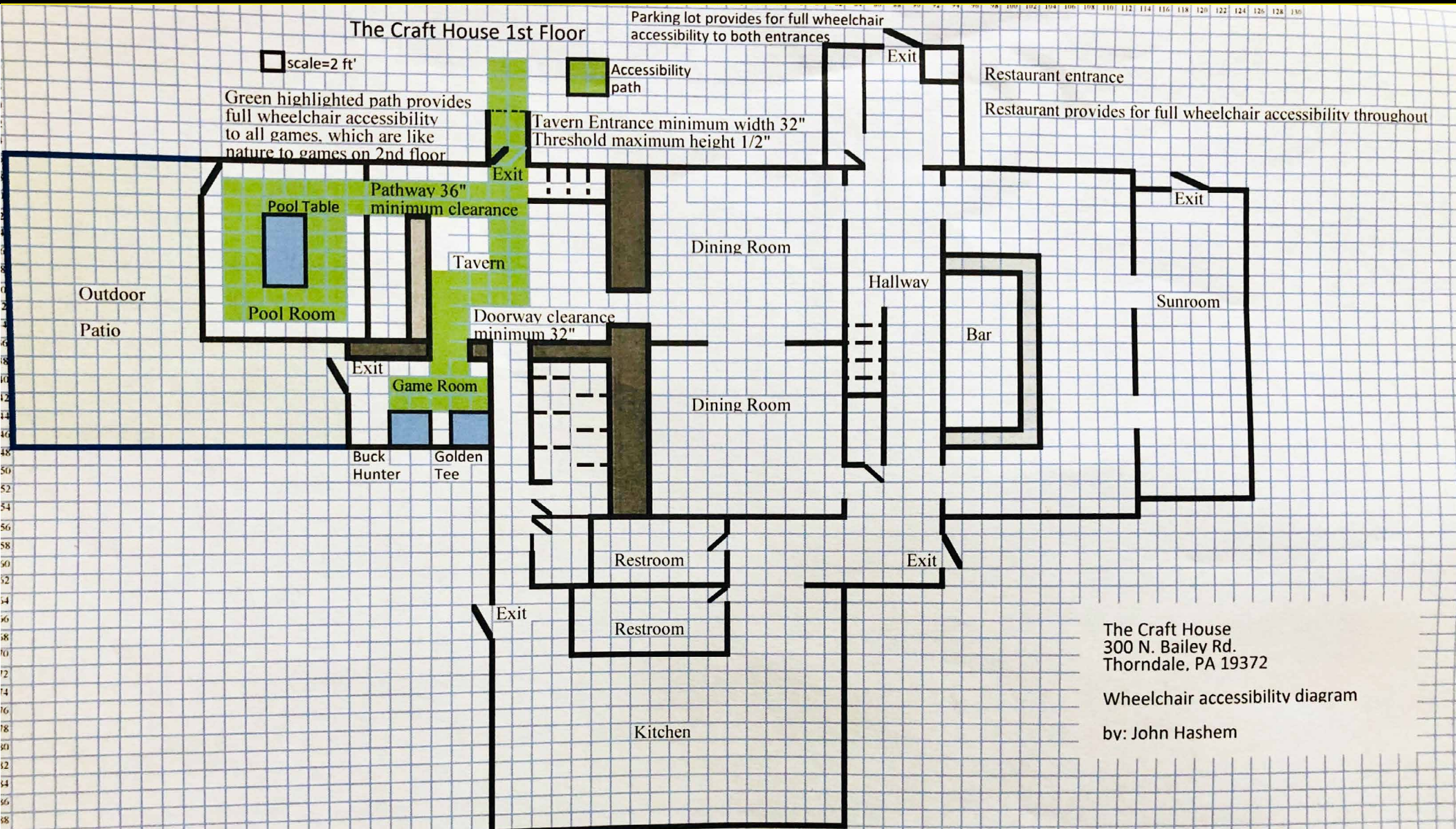
1306 Wilmington Pike, Suite A-2

West Chester, PA 19382

610.359.1100

www.zmcre.com

SITE PLAN - 1ST FLOOR: 300 NORTH BAILEY ROAD, THORNDALE, PA



CONTACT US

JAMES PINCKNEY

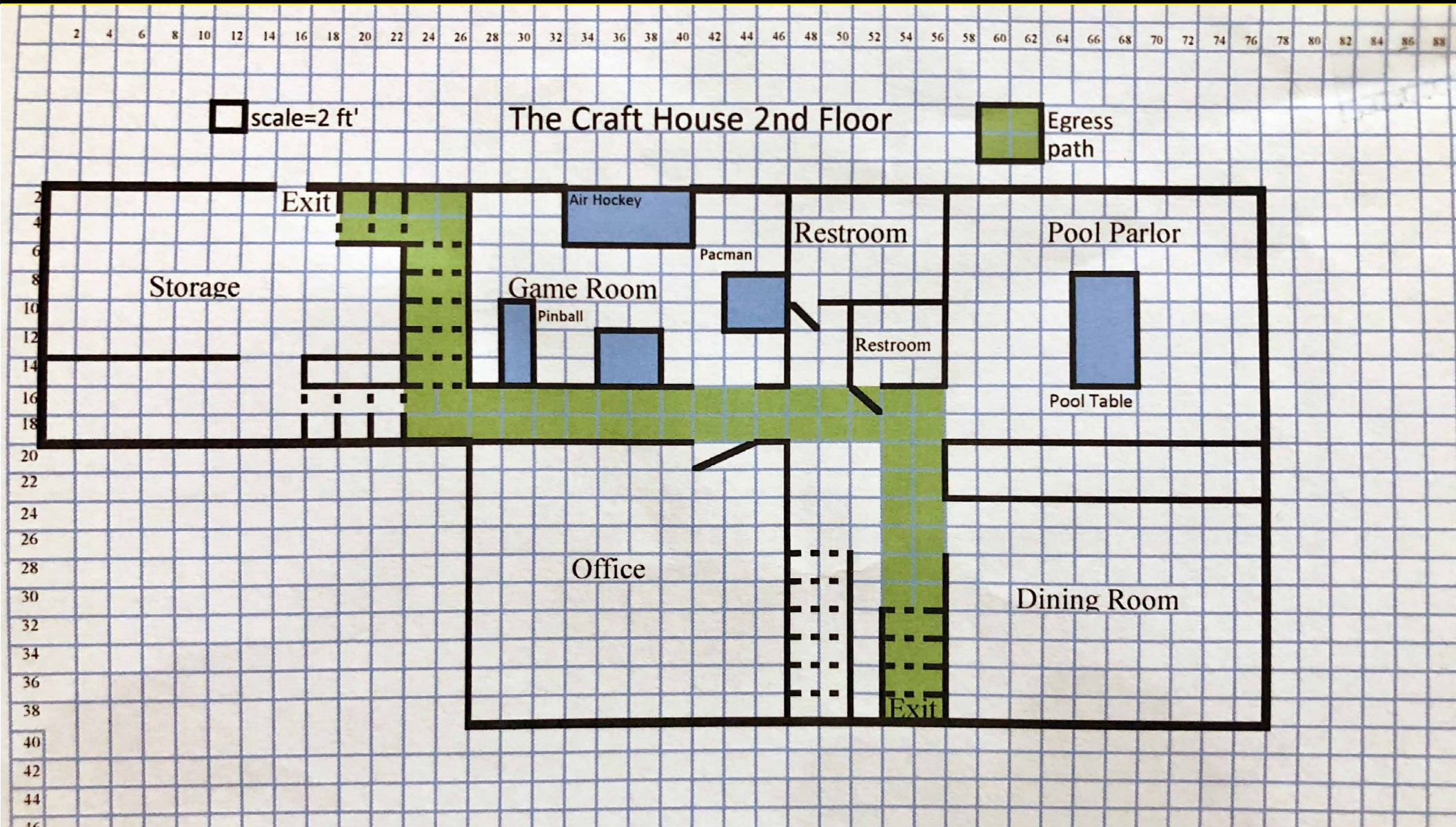
Phone: 610.359.1100
Cell: 610.453.2569
Email: jpinckney@zmcre.com

TESS SCOTT

Phone: 610.359.1100
Cell: 610.401.3453
Email: tscott@zmcre.com

1306 Wilmington Pike, Suite A-2
West Chester, PA 19382
610.359.1100
www.zmcre.com

SITE PLAN - 2ND FLOOR: 300 NORTH BAILEY ROAD, THORNDALE, PA



CONTACT US

JAMES PINCKNEY
Phone: 610.359.1100
Cell: 610.453.2569
Email: jpinckney@zmcre.com

TESS SCOTT
Phone: 610.359.1100
Cell: 610.401.3453
Email: tscott@zmcre.com

1306 Wilmington Pike, Suite A-2
West Chester, PA 19382
610.359.1100
www.zmcre.com

ABOUT ZOMMICK McMAHON COMMERCIAL REAL ESTATE

Zommick McMahon Commercial Real Estate, Inc. has been a Metro Philadelphia Area staple since its inception in 1949. The Company was founded by Joseph Zommick, and continues today with Ryan McMahon and his highly experienced staff, whom are all results-oriented professionals.

SOME OF OUR SATISFIED CLIENTS:



CONTACT US

JAMES PINCKNEY

Phone: 610.359.1100
Cell: 610.453.2569
Email: jpinckney@zmcre.com

TESS SCOTT

Phone: 610.359.1100
Cell: 610.401.3453
Email: tscott@zmcre.com

1306 Wilmington Pike, Suite A-2
West Chester, PA 19382
610.359.1100
www.zmcre.com