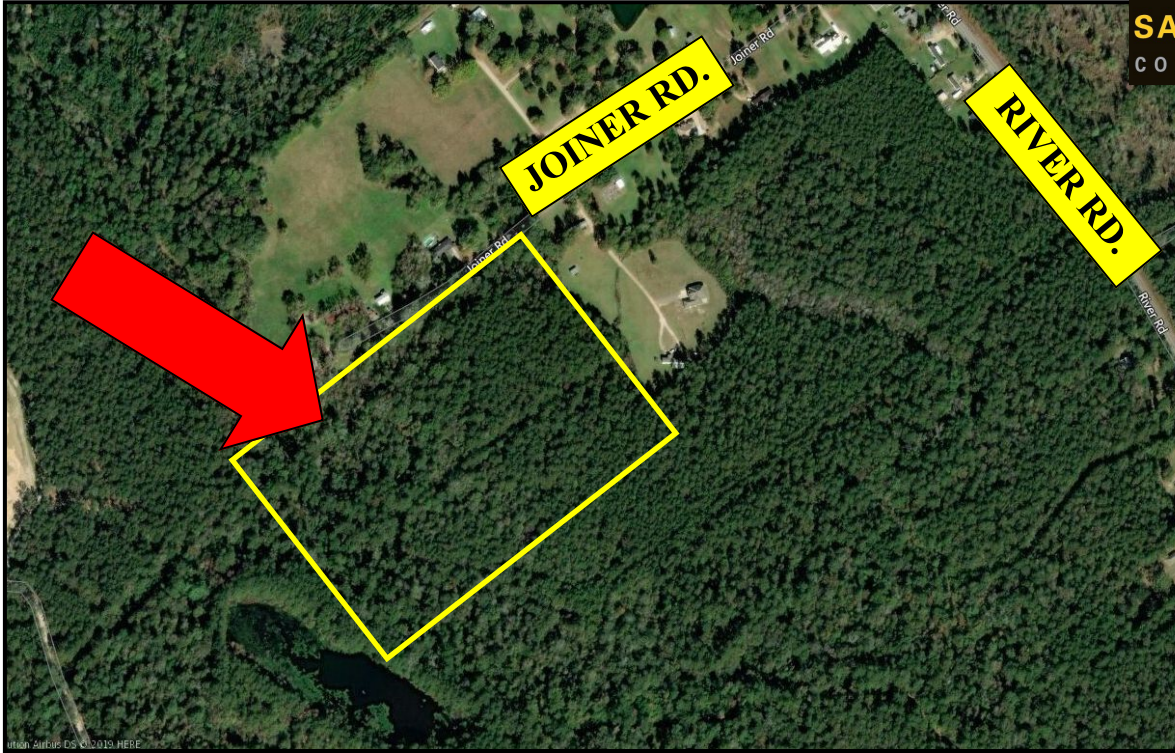


JOINER ROAD, Hammond, LA

FOR SALE



SAURAGE ROTENBERG
COMMERCIAL REAL ESTATE



SYNOPSIS:

- Hammond, LA
- 21.5 Acres
- Just west of River Rd. (Hwy. 1064)
- 500' +/- Frontage
- Flood Zone "X"
- Ideal Uses:
 - Residential
 - Multi-Family
- \$20,000 per acre
- \$450,000.00

Development Land Available 21.5 Acre Tract



CONTACT INFORMATION:

Larry Dietz, CCIM
Associate Broker

225-766-0000 / Office

225-315-7686 / Mobile

Email: larry@SR-CRE.com

Saurage Rotenberg Commercial Real Estate, LLC
5135 Bluebonnet Blvd. Baton Rouge, La 70809
(e) 225.766.0000 (f) 225.766.2229 www.SaurageRotenberg.com



Individual Member

Disclaimer: The information contained herein has either been given to us by property owners or is from sources deemed reliable and is believed to be correct, it is not in any way warranted or guaranteed by Saurage Rotenberg Commercial Real Estate. This information is submitted subject to errors, omissions, changes in price, rental or other conditions, withdrawal without notice, and to any special listing conditions imposed by the principals.