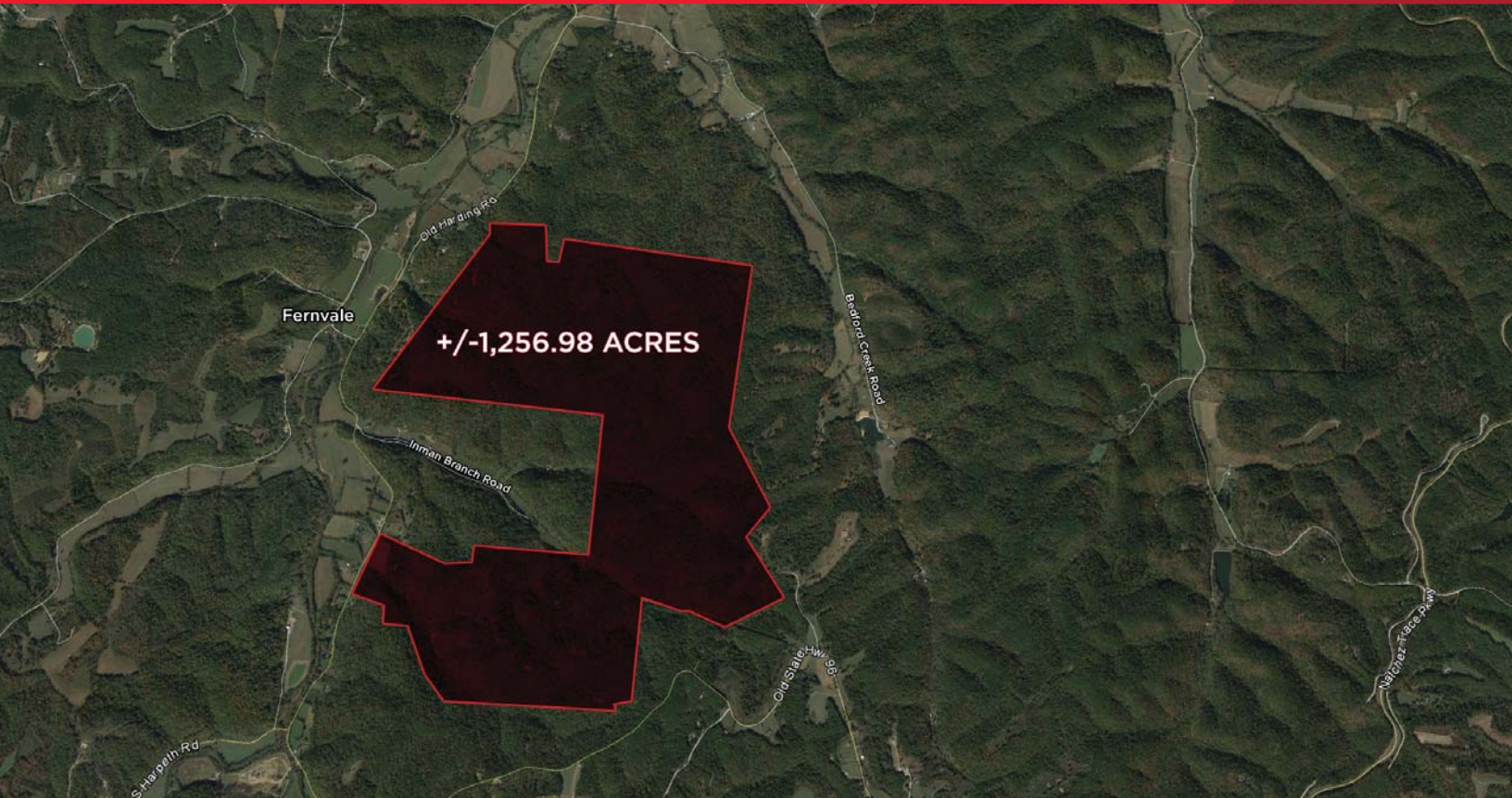




**CUSHMAN &
WAKEFIELD**

FOR SALE

West Williamson County Land

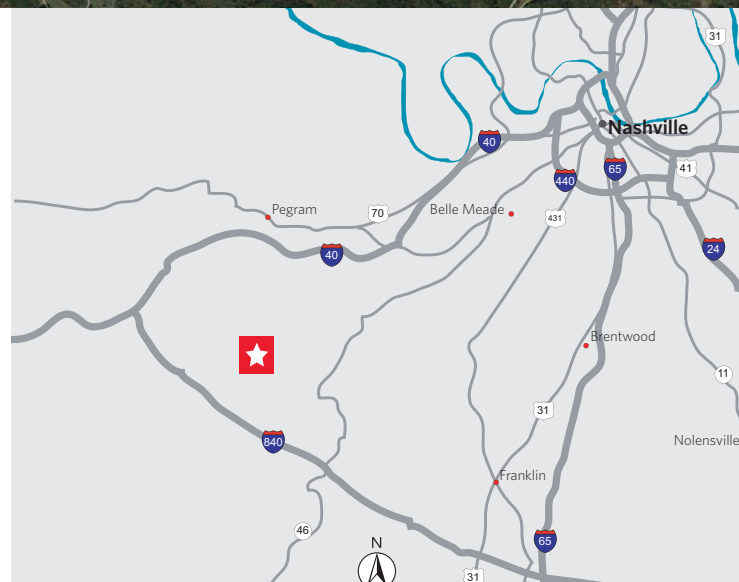


+/- 1,257 Acres in Williamson County

Property Highlights

- Located between Fairview & Franklin in high growth Williamson County
- 1,300' of frontage on Old Hwy 96
- Approximate distance from property:
 - Fairview - 4 Miles
 - Franklin - 10 Miles
 - Nashville - 15 Miles
 - I-840 - 4 Miles
 - I-40 - 8 Miles

For more information, visit www.tnlandservices.com



Fred Kane
+1 615 301 2802
fred.kane@cushwake.com

1033 Demonbreun, Suite 600
Nashville, TN 37203
main +1 615 301 2800
fax +1 615 301 2957
cushmanwakefield.com

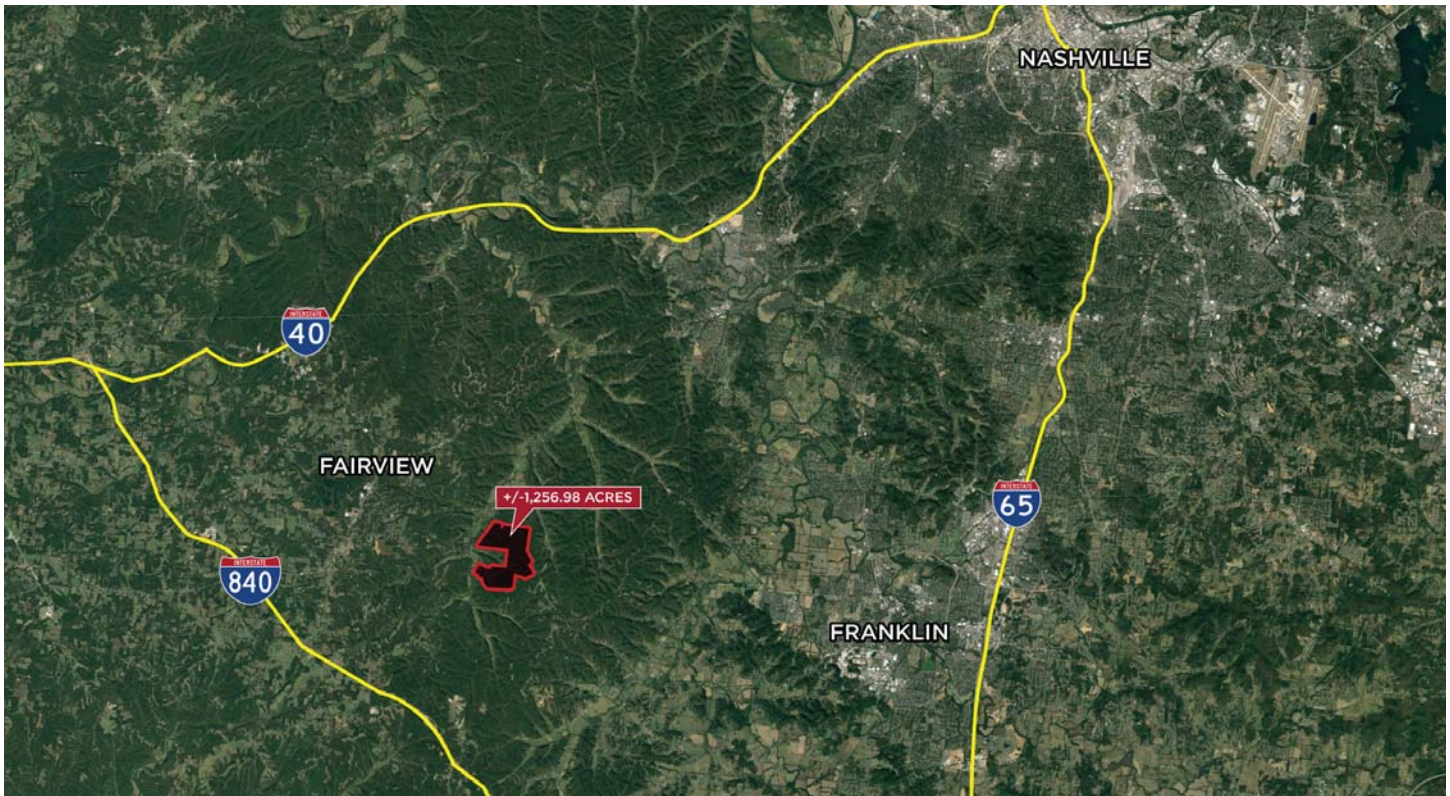


**CUSHMAN &
WAKEFIELD**

FOR SALE

West Williamson County Land

Aerial



Demographics

	1 Mile	3 Mile	5 Mile
Population	593	10,832	42,047
AVG. Households	158	3,003	12,601
AVG. HH Income	\$78,993	\$73,050	\$71,225

Traffic Counts

I-840 16,014 TDOT