

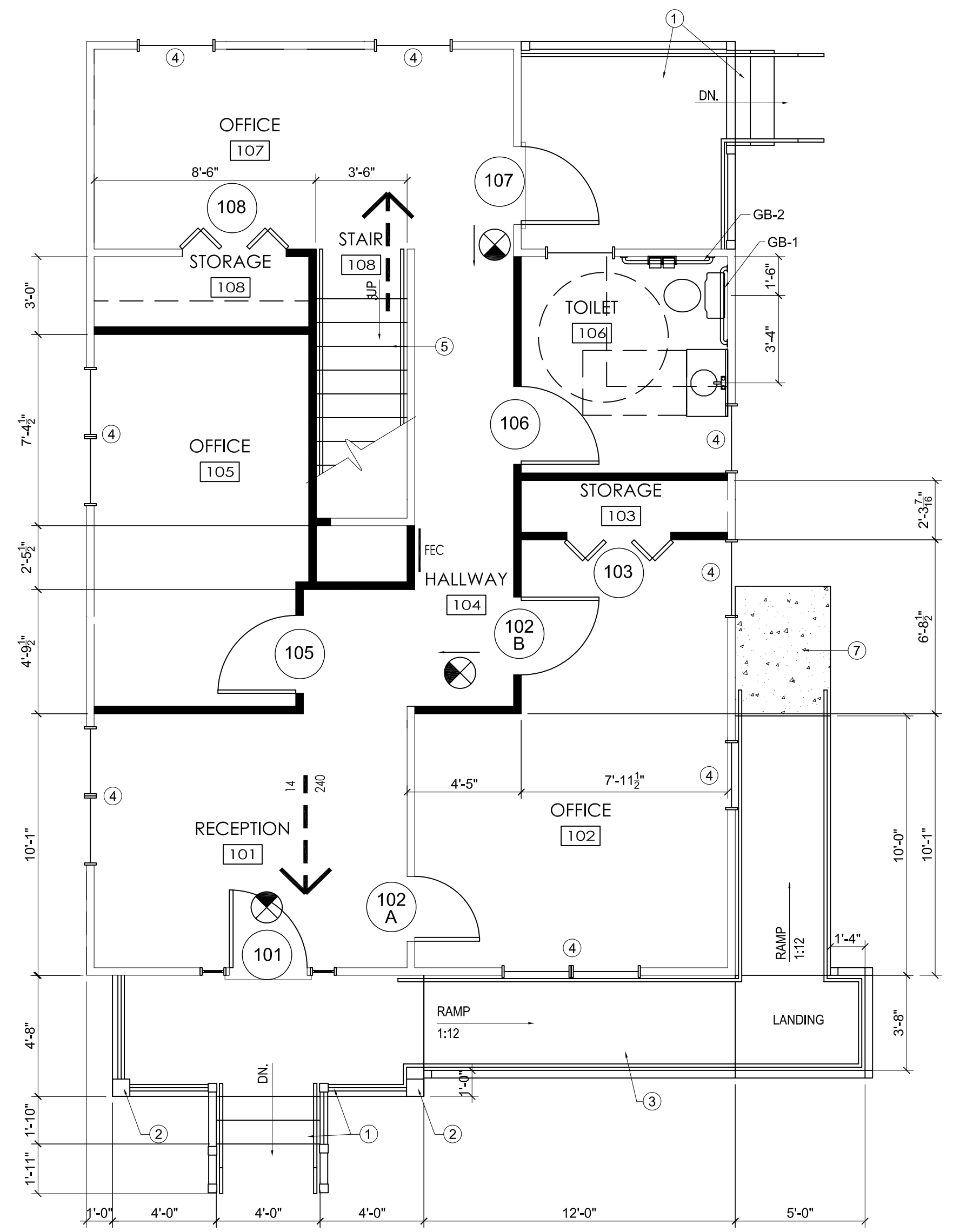
ALL DESIGN DRAWINGS OR SPECIFICATIONS DEPICTED ON THIS SHEET ARE PROPERTY OF KARPUS DESIGN, LLC. COPYRIGHT 2006. ANY USE OR REPRODUCTION OF THESE DOCUMENTS WITHOUT EXPRESS PERMISSION OF KARPUS DESIGN, LLC IS STRICTLY PROHIBITED AND SUBJECT TO LEGAL ACTION. POSSESSION IN ANY FORM CONSTITUTES ACCEPTANCE OF THESE CONDITIONS.

GENERAL NOTES

- ALL INTERIOR WALLS TO BE 2x4 STUDS AT 16" O.C. W/ 5/8" GWB EACH SIDE
- ALL DIMENSIONS TO BE FACE OF STUD

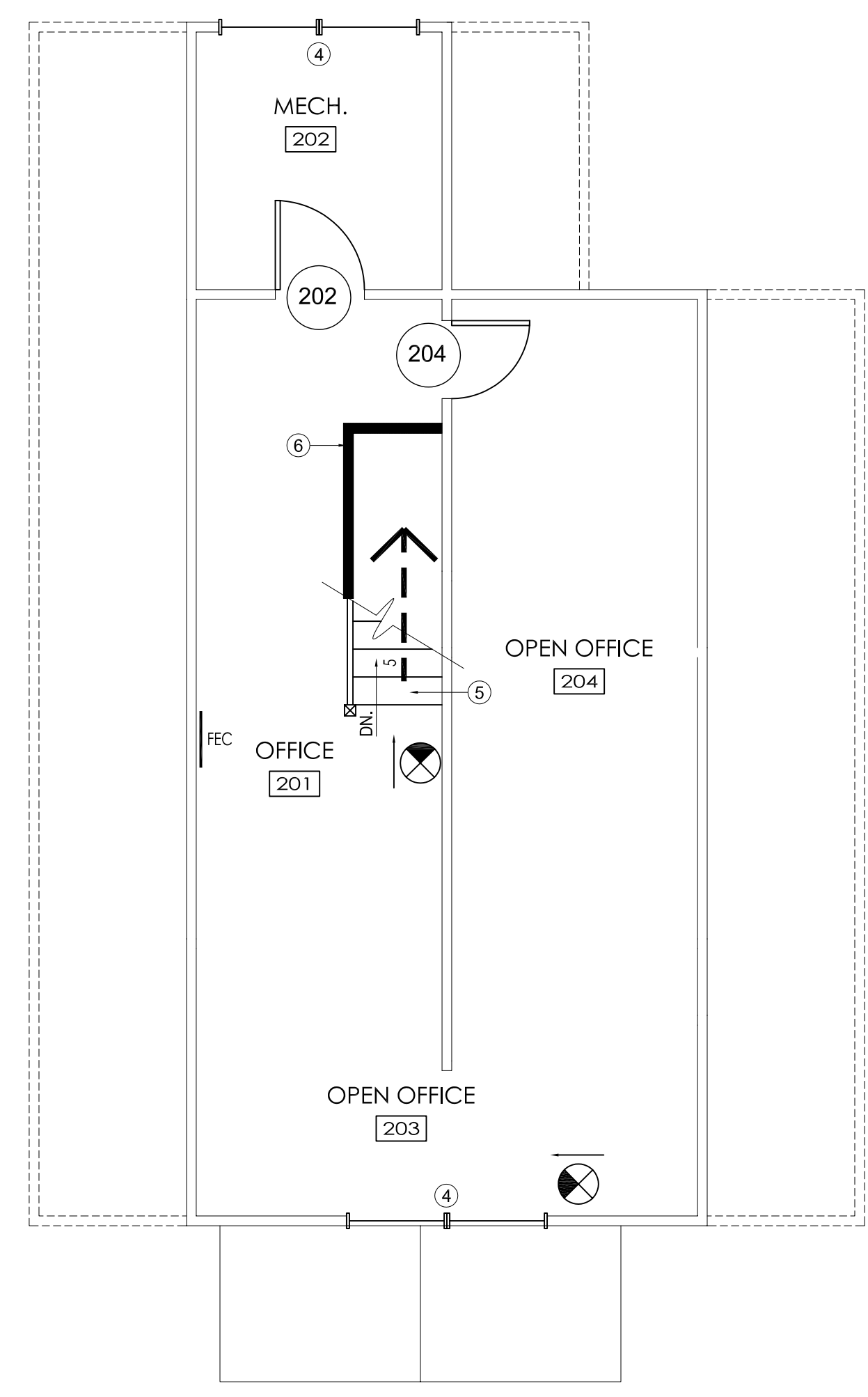
CONSTRUCTION NOTES

- NEW PT WOOD PORCH DECK, STAIRS AND RAILINGS
- NEW 8" SQ. PT WOOD BOX COLUMNS, PAINTED
- NEW PT WOOD RAMP AND RAILINGS, PAINTED
- NEW VINYL CLAD DOUBLE HUNG WINDOWS (WHITE) IN EXISTING OPENING. CONTRACTOR TO FIELD VERIFY OPENING DIMENSIONS PRIOR TO ORDERING WINDOWS. MULLION PATTERN TO BE 2 OVER 2. ALL GLAZING TO BE MIN. DP 40 WITH IMPACT GLAZING MEETING THE REQUIREMENTS OF THE LARGE MISSILE IMPACT TEST OF ASTM E 1996. (OWNER HAS THE OPTION TO INSTALL DP 40 GLAZING, NONIMPACT GLAZING, BUT MUST PROVIDE WOOD OR APPROVED MATERIAL PRECUT STRUCTURAL PANELS MIN. 7/16" THICK FOR PROTECTION OF OPENINGS. ATTACHMENT MUST BE IN ACCORDANCE WITH TABLE 1609.1.4 OF THE INTERNATIONAL BUILDING CODE 2003.) ALL NEW WOOD WINDOW TRIM AND SILLS TO MATCH EXISTING. PAINT.
- NEW WOOD STAIR AND RAILING. ALL STAIR COMPONENTS TO MEET REQUIREMENTS OF THE INTERNATIONAL BUILDING CODE 2003. RISER HEIGHTS TO BE 7" MAX., 4" MIN. TREAD DEPTHS TO BE 11" MIN. ALL STAIRWAYS SHALL HAVE HANDRAILS ON EACH SIDE. ALL HANDRAILS TO BE UNIFORM. 34"-38" ABOVE STAIR TREAD NOSINGS. TYP. HANDRAILS SHALL HAVE CIRCULAR CROSS SECTION WITH OUTSIDE DIAMETER BETWEEN 1.25" AND 2". IF HANDRAIL IS NOT CIRCULAR, IT SHALL HAVE A PERIMETER DIMENSION OF AT LEAST 4" AND NOT GREATER THAN 6.25" WITH A MAX. CROSS-SECTION DIMENSION OF 2.25". HANDRAILS SHALL BE CONTINUOUS AND RETURN TO A WALL OR WALKING SURFACE. HANDRAILS SHALL EXTEND AT LEAST 12" HORIZONTALLY BEYOND THE TOP RISER, AND SHALL CONTINUE TO SLOPE FOR THE DEPTH OF ONE TREAD BEYOND THE BOTTOM RISER, PLUS A 12" HORIZONTAL EXTENSION. ALL HANDRAILS SHALL HAVE A MIN. OF 1.5" BETWEEN RAIL AND WALL. CONTRACTOR TO FIELD VERIFY FLOOR TO FLOOR HEIGHT AND ADJUST RUN OF STAIRS ACCORDINGLY.
- 4'-0" HIGH GUARD WALL W/ PAINTED WOOD TRIM CAP
- CONCRETE LANDING AND WALK.



FIRST FLOOR PLAN

SCALE: 1/4"=1'-0"

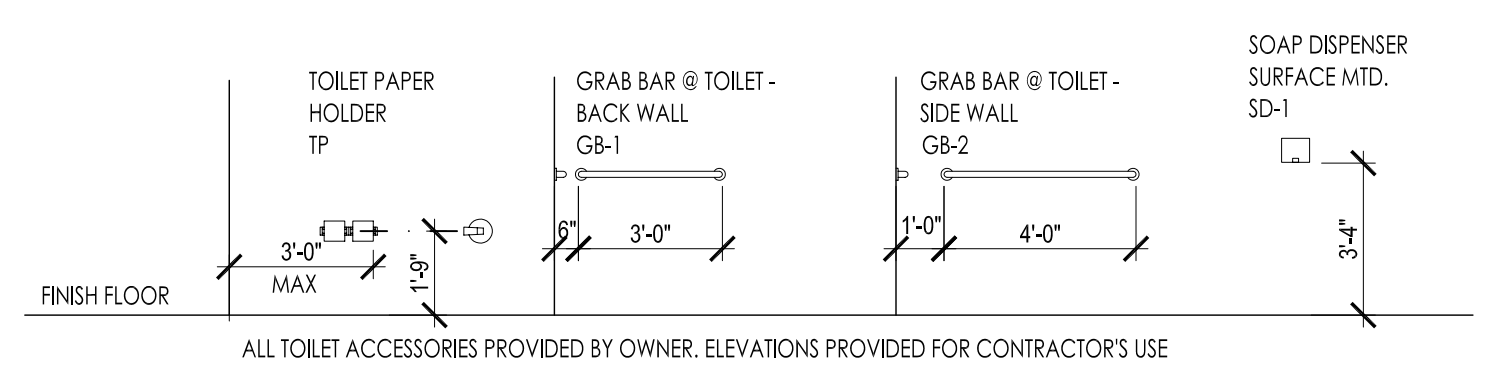


SECOND FLOOR PLAN

SCALE: 1/4"=1'-0"

FLOOR PLAN LEGEND:

- ROOM 100** ROOM NAME & NUMBER, SEE FINISH SCHEDULE THIS SHEET
- 101** DOOR TAG, SEE DOOR SCHEDULE THIS SHEET
- FEC** FIRE EXTINGUISHER, TYPE ABC DRY CHEMICAL RECESSED CABINET
- 23** EGRESS LOAD (OCC.)
- 240** EGRESS CAPACITY
- EXISTING WALL TO REMAIN
- NEW 2x4 STUD WALL W/ 5/8" GWB, EACH SIDE
- ILLUMINATED EXIT SIGN



TOILET ACCESSORY ELEVATIONS

SCALE: 1/4"=1'-0"

ROOM NO	ROOM NAME	FLOOR	Base Mat'l	WALLS				CEILING		NOTES
				N	S	E	W	MATL	HEIGHT	
101	RECEPTION	WD	PT ON WD	PT ON GWB	PT ON GWB	PT ON GWB	PT ON GWB	GWB	EXIST.	--
102	OFFICE	WD	PT ON WD	PT ON GWB	PT ON GWB	PT ON GWB	PT ON GWB	GWB	EXIST.	--
103	STORAGE	WD	PT ON WD	PT ON GWB	PT ON GWB	PT ON GWB	PT ON GWB	GWB	EXIST.	--
104	HALLWAY	WD	PT ON WD	PT ON GWB	PT ON GWB	PT ON GWB	PT ON GWB	GWB	EXIST.	--
105	OFFICE	WD	PT ON WD	PT ON GWB	PT ON GWB	PT ON GWB	PT ON GWB	GWB	EXIST.	--
106	TOILET	WD	PT ON WD	PT ON GWB2	PT ON GWB2	PT ON GWB2	PT ON GWB2	GWB2	EXIST.	--
107	OFFICE	WD	PT ON WD	PT ON GWB	PT ON GWB	PT ON GWB	PT ON GWB	GWB	EXIST.	--
108	OFFICE	WD	PT ON WD	PT ON GWB	PT ON GWB	PT ON GWB	PT ON GWB	GWB	EXIST.	--
201	OFFICE	WD	PT ON WD	PT ON GWB	PT ON GWB	PT ON GWB	PT ON GWB	GWB	EXIST.	--
202	MECH.	WD	PT ON WD	PT ON GWB	PT ON GWB	PT ON GWB	PT ON GWB	GWB	EXIST.	--
203	OFFICE	WD	PT ON WD	PT ON GWB	PT ON GWB	PT ON GWB	PT ON GWB	GWB	EXIST.	--
204	OPEN OFFICE	WD	PT ON WD	PT ON GWB	PT ON GWB	PT ON GWB	PT ON GWB	GWB	EXIST.	--

- KEY:
- GWB: GYPSUM WALL BOARD
 - GWB2: MOISTURE-RESISTANT GWB
 - PT: PAINT
 - WD: WOOD

Door No.	DOOR				FRAME				Remarks	
	Door Size (w x h t)	Thk.	Type	Glazing	Fire Rating	Detail				Hrdwr. Set No.
						Head	Jamb	Sill		
101	EXIST. W/ SIDE LIGHTS								(s. typ.)	
102A	3'-0" x 7'-0"	1 3/4"	F1	--	--	WD				
102B	3'-0" x 7'-0"	1 3/4"	F1	--	--	WD				
103	PR. 2'-0" x 7'-0" BIFOLD	1 3/4"	F1	--	--	WD				
105	3'-0" x 7'-0"	1 3/4"	F1	--	--	WD				
106	3'-0" x 7'-0"	1 3/4"	F1	--	--	WD				
107	EXIST. W/ SIDE LIGHTS									REVERSE SWING
108	PR. 2'-0" x 7'-0" BIFOLD	1 3/4"	F1	--	--	WD				
202	3'-0" x 7'-0"	1 3/4"	F1	--	--	WD				
204	3'-0" x 7'-0"	1 3/4"	F1	--	--	WD				

- NOTES:
- All hardware sets to be selected by Owner
 - All wood doors and trim to match existing

KARPUS DESIGN, LLC
P.O. Box 986
Summerville, South Carolina, 29484
ph: 843.425.4124 | fax: 843.832.7331
karpusdesign.com

Renovations to:
2097 MOUNT PLEASANT ST.
for **William J. Lynch, Jr.**
Charleston, South Carolina

PERMIT DRAWINGS
Rev. Date Description

DRAWN BY: CMK
CHECKED BY: CMK
PROJECT NUMBER: 07007
DATE: 04.12.07

SHEET TITLE:
FLOOR PLANS AND NOTES

SHEET NUMBER:
A1.1