

# 95 Reef Road, Fairfield, Connecticut



Adjacent to Town Green and Downtown Fairfield Amenities, Tran Station, Shopping, Restaurants and Theatre.

Price Reduced! For Lease: \$33.00 PSF NNN

Contact Bruce Wettenstein, SIOR

203.226.7101 ext. 2, [bruce@vidalwettenstein.com](mailto:bruce@vidalwettenstein.com)

## SPACE AVAILABLE FOR LEASE

### In the Heart of Downtown Fairfield

- 1,634 Middle Level Square Feet
- 1,729 Upper Level Square Feet
- 114' frontage
- Zone: Mixed use
- Parking Spaces: 19
- Building has been completely renovated in 2004
- Electric car charging station on site



All information from sources deemed reliable and is submitted subject to errors, omissions, change of price, rental, and property sale and withdrawal notice.



**SIOR**

Individual Members

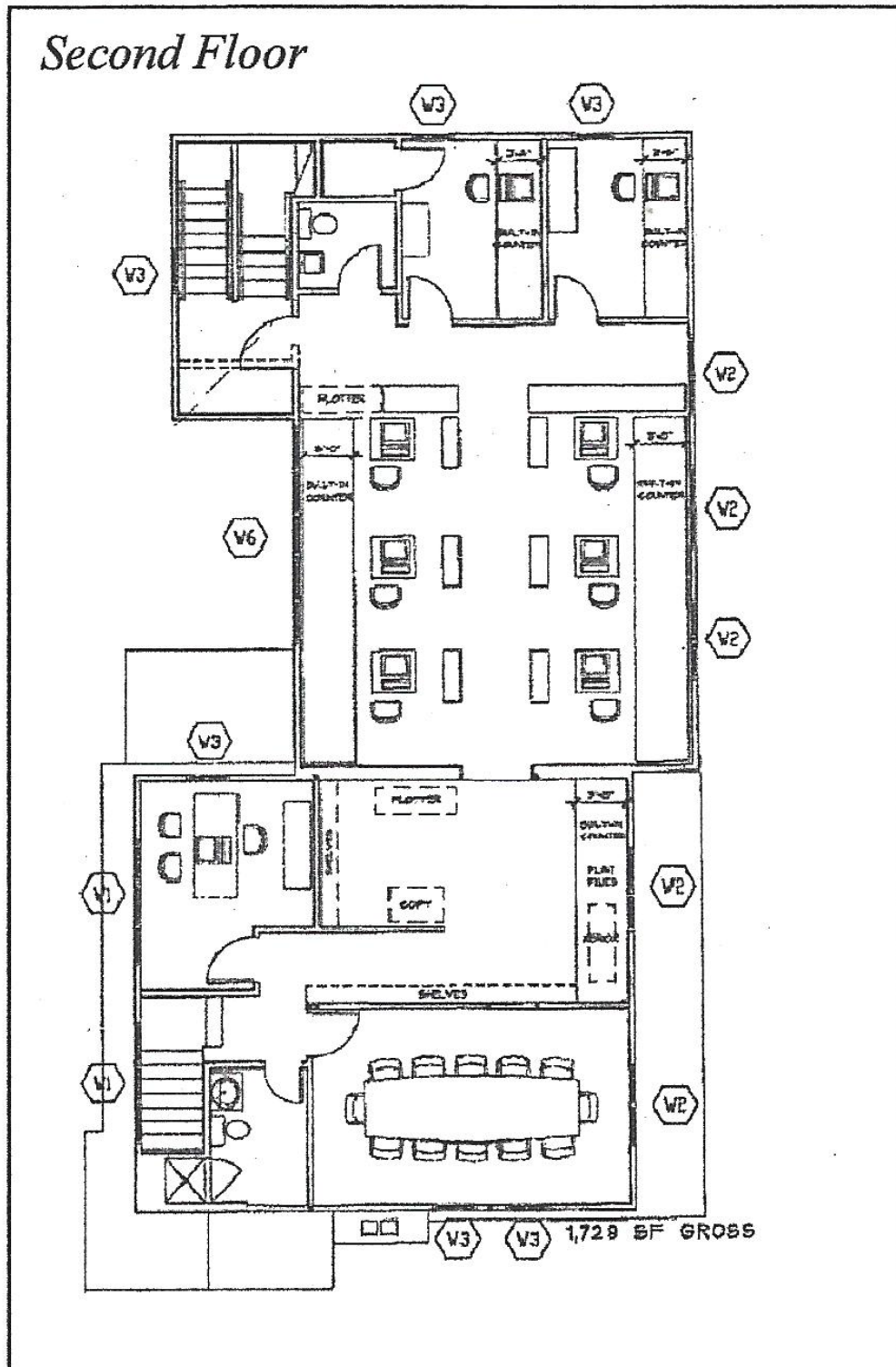
Society of Industrial and Office Realtors

## VIDAL/WETTENSTEIN, LLC

719 Post Road East, Westport, CT 06880

[www.vidalwettenstein.com](http://www.vidalwettenstein.com)

# 95 Reef Road, Fairfield, Connecticut



All information from sources deemed reliable and is submitted subject to errors omissions, change of price, rental, and property sale and withdrawal notice.

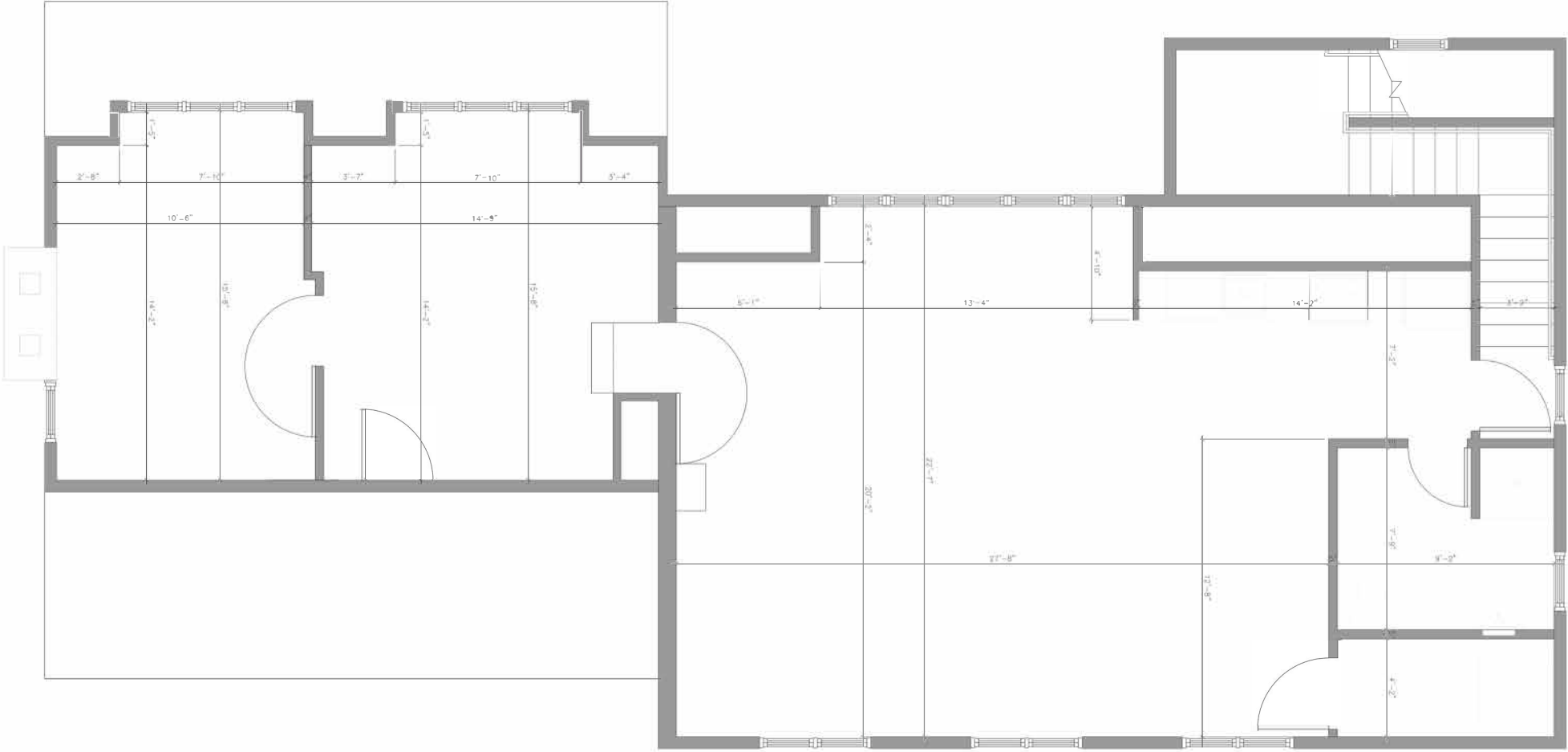


Individual Members  
Society of Industrial and Office Realtors

## VIDAL/WETTENSTEIN, LLC

719 Post Road East, Westport, CT 06880  
[www.vidalwettenstein.com](http://www.vidalwettenstein.com)

# Upper Level



DATE: 11/01/18	
SCALE: 1/2"=1'-0"	
DRAWN BY: ADK	
CHECKED BY: [Signature]	
PROJECT NO: [Redacted]	
LOCATION: 95 REEF ROAD	
DESCRIPTION: 3RD FLOOR OFFICE PLAN	
SHEET NO: A-103	