

Office Suite • 1,091 SF AVAILABLE • \$17/SF MG

# FOR LEASE

Carefree Office Center

Carefree Arizona  
Class "A"  
Garden Style Office  
Building



**LOCATED AT THE SWC OF EAST CAVE CREEK & ELBOW BEND ROADS ...**  
**15,734 SF Class A Garden-Style Office Building with a 5.3 to 1 parking ratio and excellent local amenities that include retail and restaurants in the Center of Town. Recently Renovated and Value Priced at \$17/SF FS Net Elect & Janitorial.**



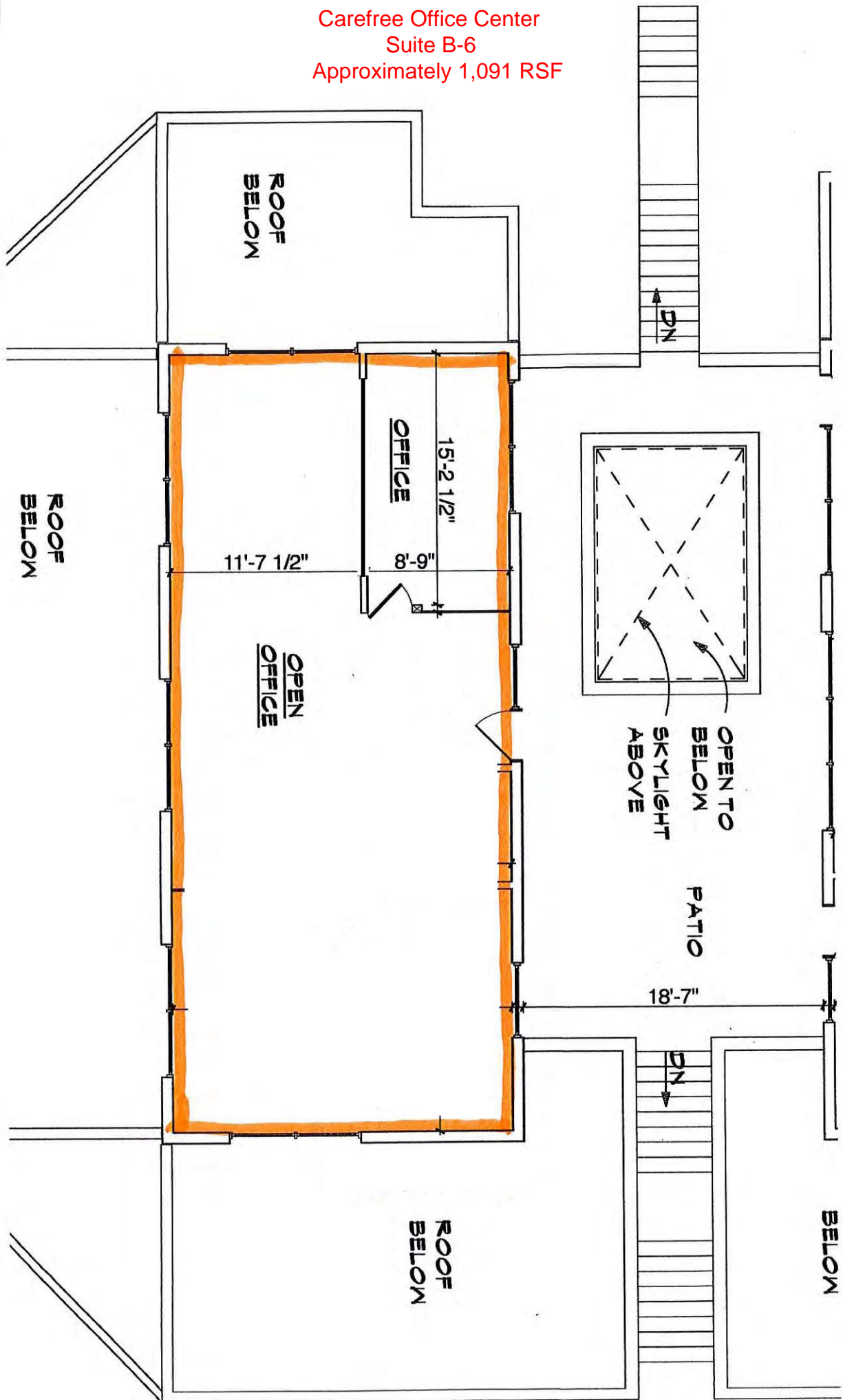
7518 E. Elbow  
Bend Rd., Carefree, AZ  
85377



**Contact: Rick Mineweaser**  
**DIAMOND PACIFIC INVESTMENTS, INC.**  
**O: 480-951-4118 / M: 602-703-4118**  
**rick@diamond-pacific.com**

[Drone Flight of the Immediate Area that You Control • Click Here](#)

Carefree Office Center  
Suite B-6  
Approximately 1,091 RSF





New Spec Build-Out  
Suite B-6 at Carefree Office Center





# Carefree Office Center



# Carefree Office Center

