

SOUTH BRIDGE

BIRMINGHAM, AL

OFFICE SPACE FOR LEASE

HARBERT
REALTY SERVICES

SOUTH BRIDGE

2000-2100 SOUTHBRIDGE PARKWAY BIRMINGHAM, AL 35209

OFFICE SPACE FOR LEASE

\$24.50 / rsf Full Service

AVAILABLE SUITES:

100 – 7,143 SF Available 5/1/20

Comes with Building Signage

205 – 685 SF	430 – 1,166 SF	525 – 2,813 SF
220 – 2,011 SF	445 – 5,218 SF	580 – 2,687 SF
305 – 1,857 SF	450 – 3,352 SF	625 – 1,085 SF
390 – 1,957 SF	513 – 2,974 SF	

- Modernized corridors and tenant common areas
- Centrally located between Central Business District, Homewood & Mountain Brook
- Free surface parking
- 24 hour key-fob access
- Walking path and outdoor eating area adjacent to building
- Building health club
- Deli on-site with catering available
- Synovus Bank; Embassy Suites Hotel; Iberia Bank; Ruth's Chris
- On-site property management provided by YMP Real Estate Management
- Easy access to major transportation arteries
- After hours security
- Common conference facility



Managed by:



HARBERT
REALTY SERVICES

The information contained herein has been obtained from sources deemed reliable, however, HRS makes no guarantees, warranties or representation as to its completeness or accuracy thereof. The presentation of this property is submitted subject to errors, omissions, change of price or conditions, prior to sale or lease or withdrawal without notice.

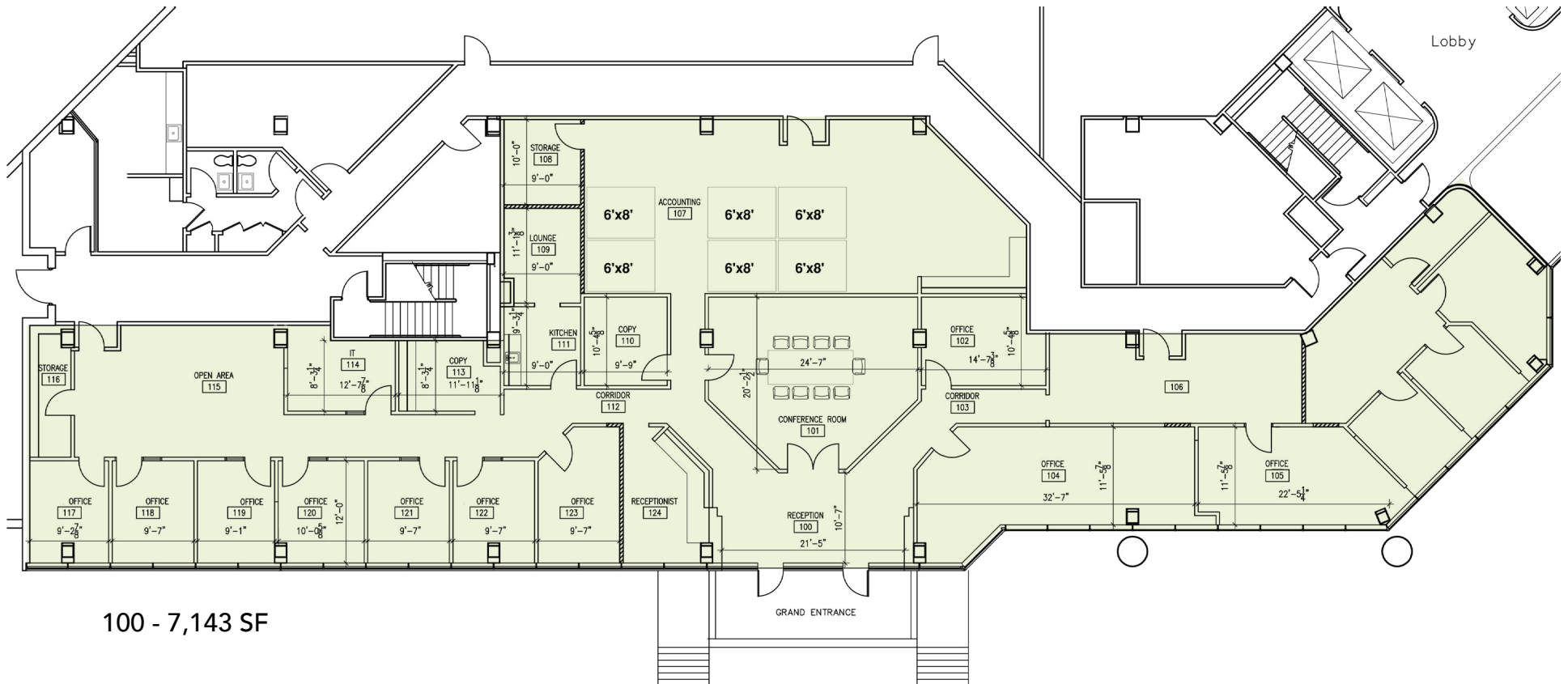
Tanner Sumners
tsumners@harbertrealty.com
205.458.8103

2 North Twentieth Street
Suite 1700
Birmingham, AL 35203

HarbertRealty.com
205.323.2020

SOUTH BRIDGE

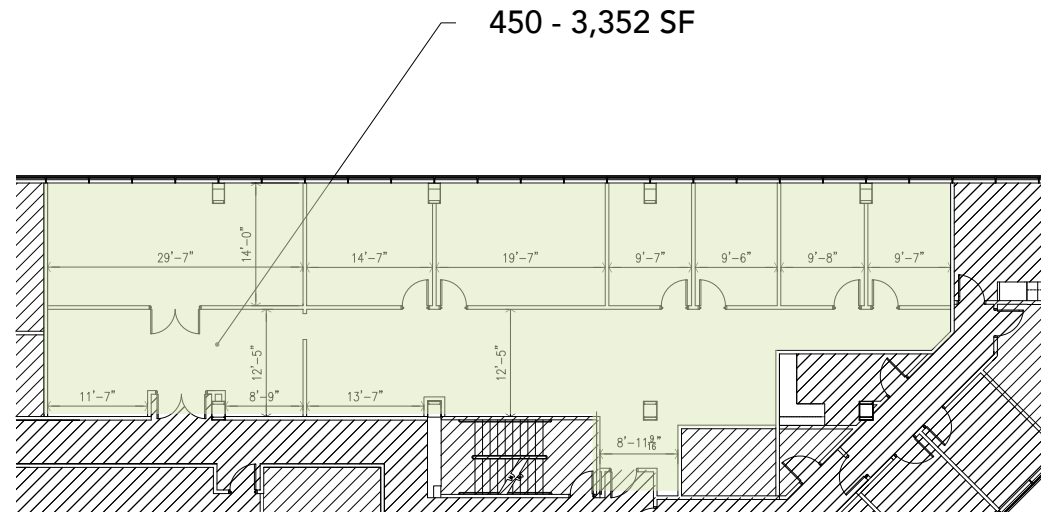
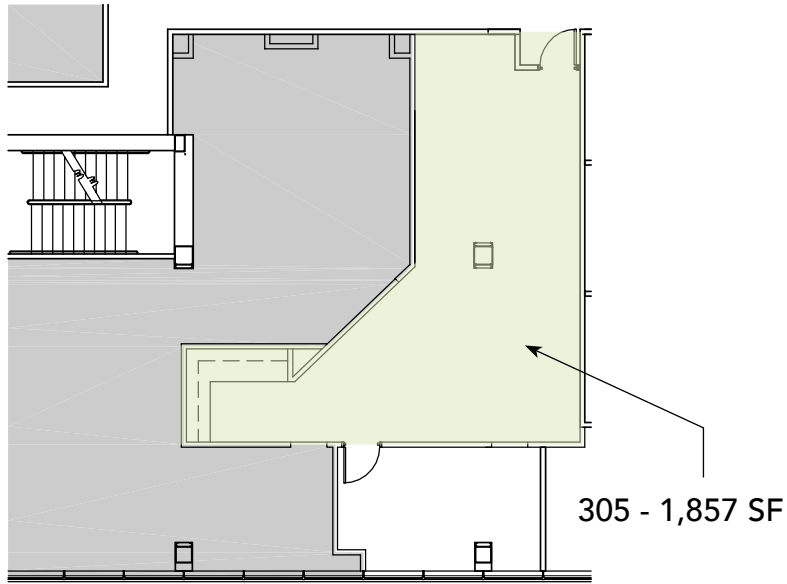
2000-2100 SOUTHBRIDGE PARKWAY BIRMINGHAM, AL 35209



100 - 7,143 SF

SOUTH BRIDGE

2000-2100 SOUTHBRIDGE PARKWAY BIRMINGHAM, AL 35209



SOUTH BRIDGE

2000-2100 SOUTHBRIDGE PARKWAY BIRMINGHAM, AL 35209

