



Available Space

±309 - 2,621 SF

Laguna Office Elk Grove

9281 Office Park Circle | Elk Grove, CA

Description

Laguna offices for lease in the heart of Elk Grove across the street from the City of Elk Grove's Campus.

Property Features

- Centrally located in Elk Grove off Hwy 99
- Generous Parking
- Adjacent to City Hall in Elk Grove
- Competitive rates
- Immediate occupancy!

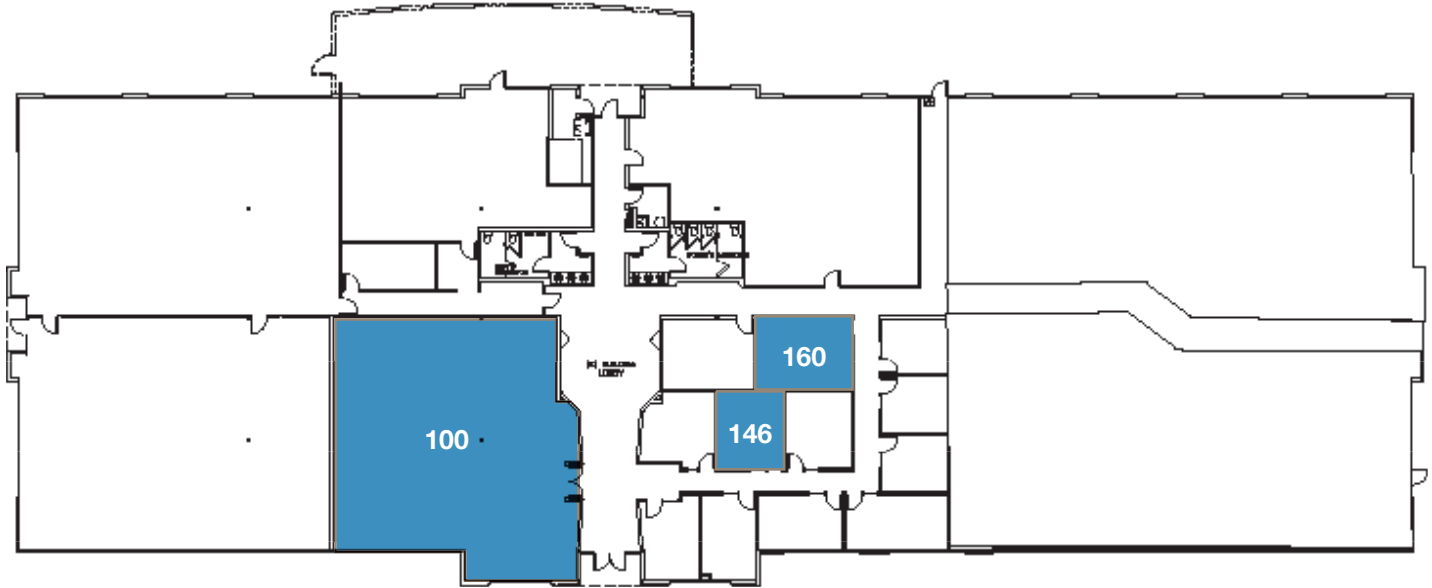


JACKSON
PROPERTIES

For further information please contact us at (916) 381-8113 or jacksonprop.com

Broker participation is invited.

The information herein is provided from reliable sources; however, Jackson Properties, Inc. assumes no liability for accuracy. The individual broker or user should confirm the physical information for themselves. Prices subject to change without notice.



9281 Office Park Circle Elk Grove

Available Units	Total Size	Monthly Rent
9281 Office Park Circle, Suite 146	309 SF	\$880.00 FS
9281 Office Park Circle, Suite 160	399 SF	\$1,140.00 FS
9281 Office Park Circle, Suite 100*	2,621 SF	Call for pricing



JACKSON
PROPERTIES

For further information please contact us at (916) 381-8113 or jacksonprop.com

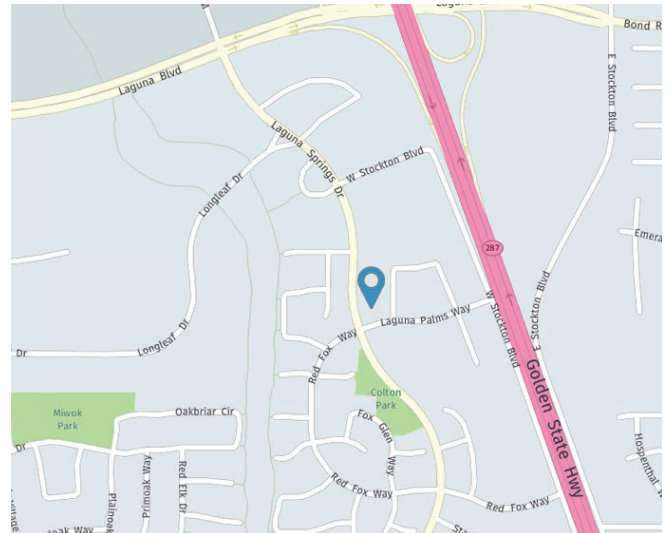
Broker participation is invited.

The information herein is provided from reliable sources; however, Jackson Properties, Inc. assumes no liability for accuracy. The individual broker or user should confirm the physical information for themselves. Prices subject to change without notice. Disclaimer for 3-5 lease rate.



Laguna Office Elk Grove

9281 Office Park Circle | Elk Grove, CA



JACKSON
PROPERTIES

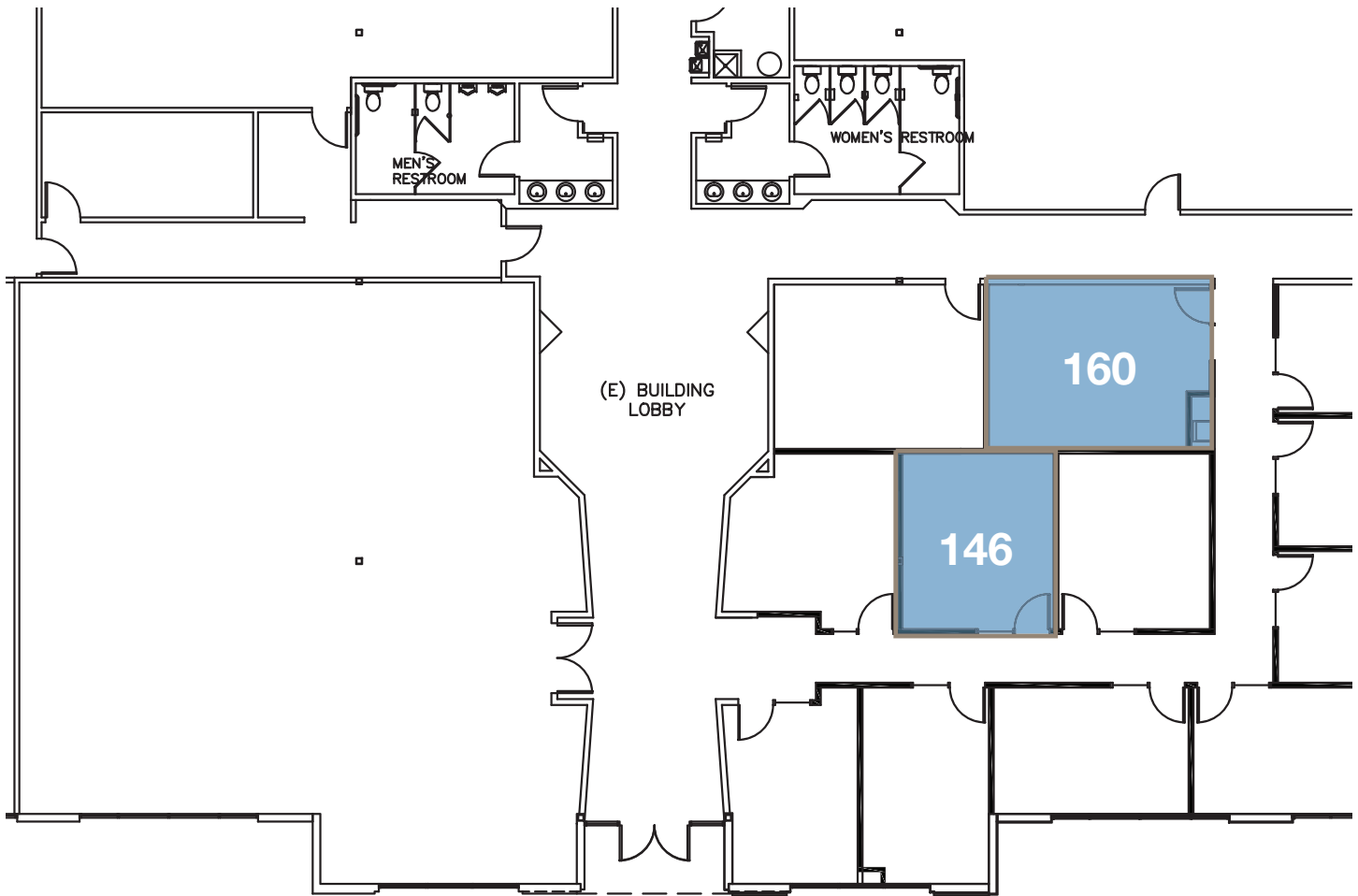
For further information please contact us at (916) 381-8113 or jacksonprop.com

9281 Office Park Circle, Elk Grove

Laguna Work Space

Suite 146 ±309 SF

Suite 160 ±399 SF



9281 Office Park Circle, Elk Grove

Suite 100 ±2,621 SF

