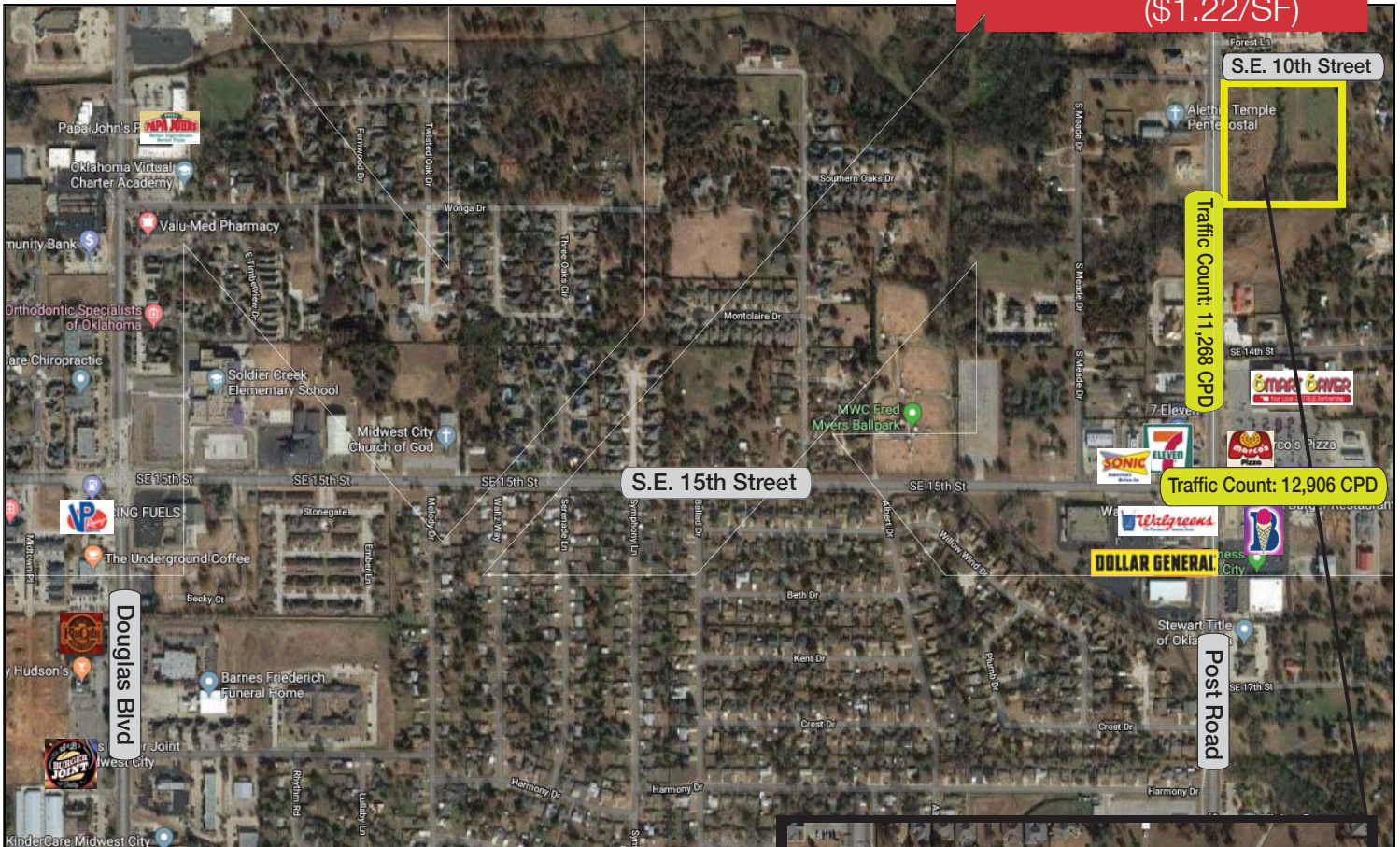


Retail Land For Sale

8.44 Acres MOL

Sales Price: \$450,000
(\$1.22/SF)



1120 S. Post Road

Midwest City, Oklahoma 73130

PROPERTY HIGHLIGHTS

- 8.44 Acres MOL, Zoned PUD-1743
- Developing Area of Midwest City
- Residential, Office & Retail Component
- Some Infrastructure Completed
- Engineering Completed

LOCATION HIGHLIGHTS

- High Growth Area of Midwest City



www.naisullivangroup.com

Bob Sullivan, CCIM

Cell: 1 405 641 9798

rsullivan@ccim.net

4045 N.W. 64th Street, Suite 340

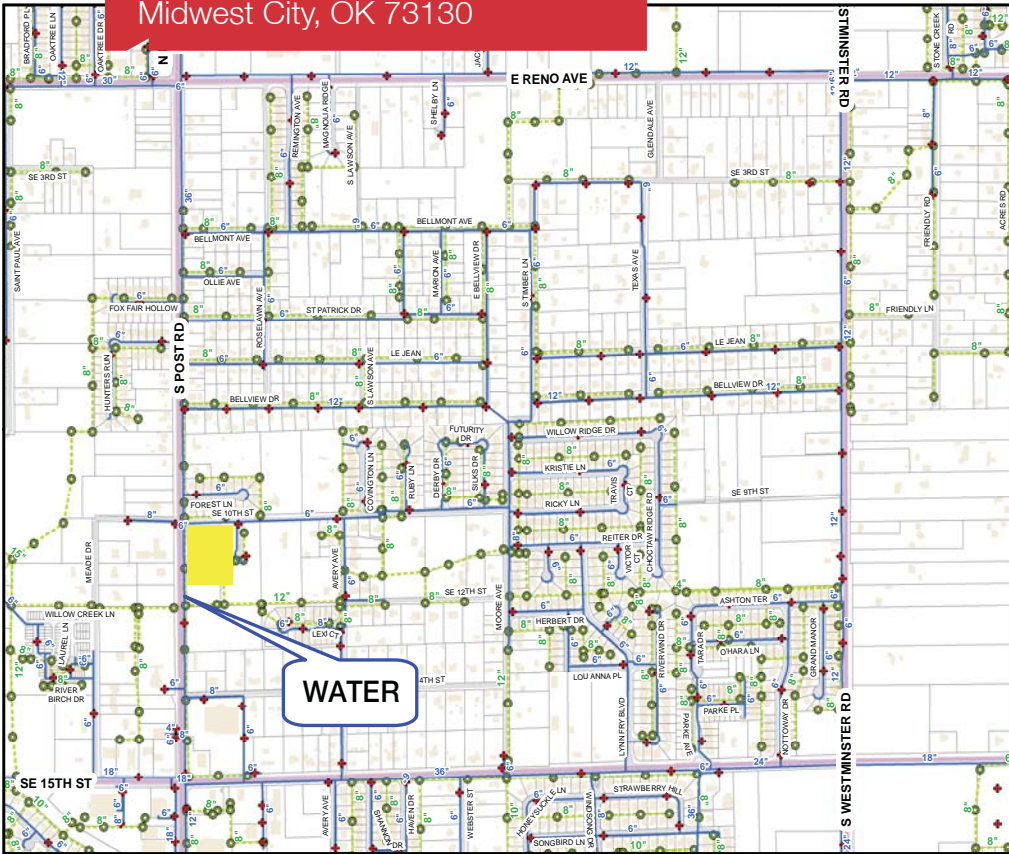
Oklahoma City, Oklahoma 73116

Office: 1 405 840 0600

Fax: 1 405 840 0610

NO WARRANTY OR REPRESENTATION, EXPRESS OR IMPLIED, IS MADE AS TO THE ACCURACY OF THE INFORMATION CONTAINED HEREIN, AND THE SAME IS SUBMITTED SUBJECT TO ERRORS, OMISSIONS, CHANGE OF PRICE, RENTAL OR OTHER CONDITIONS, PRIOR SALE, LEASE OR FINANCING, OR WITHDRAWAL WITHOUT NOTICE, AND OF ANY SPECIAL LISTING CONDITIONS IMPOSED BY OUR PRINCIPALS NO WARRANTIES OR REPRESENTATIONS ARE MADE AS TO THE CONDITION OF THE PROPERTY OR ANY HAZARDS CONTAINED THEREIN ARE ANY TO BE IMPLIED.

1120 S. Pole Road
Midwest City, OK 73130



DEMOGRAPHICS

Population

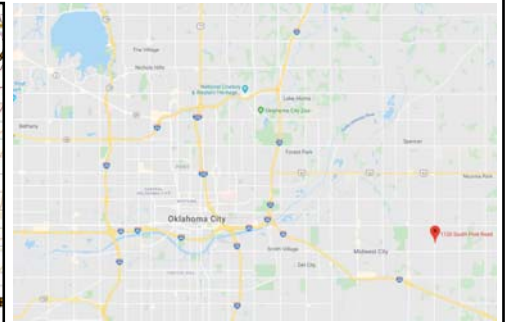
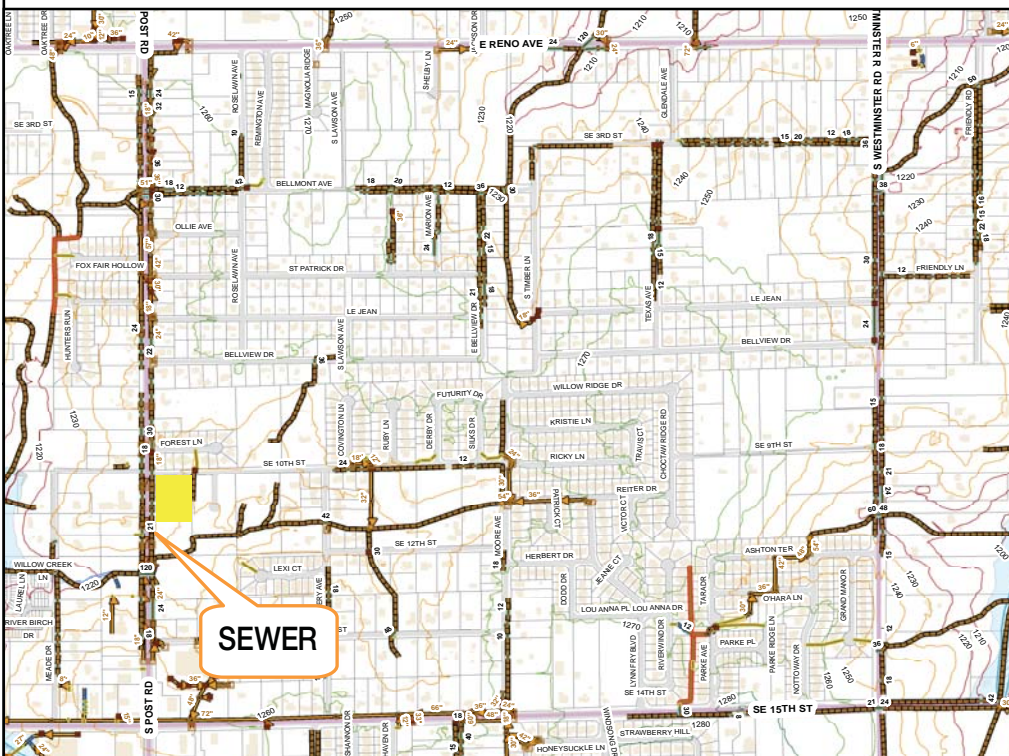
1 Mile: 5,908	3 Mile: 50,475	5 Mile: 96,976
------------------	-------------------	-------------------

Average Household Income

1 Mile: \$62,133	3 Mile: \$51,283	5 Mile: \$52,210
---------------------	---------------------	---------------------

Total Households

1 Mile: 2,384	3 Mile: 20,726	5 Mile: 38,455
------------------	-------------------	-------------------



Bob Sullivan, CCIM

Cell: 1 405 641 9798

rsullivan@ccim.net

www.naisullivangroup.com

4045 N.W. 64th Street, Suite 340
Oklahoma City, Oklahoma 73116
Office: 1 405 840 0600
Fax: 1 405 840 0610

NAISullivan Group