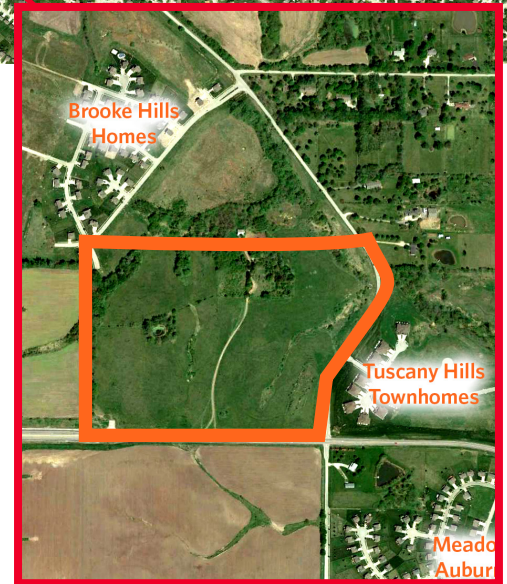


±43 Acres

Sale Price: \$4,724,082 / \$2.50 PSF

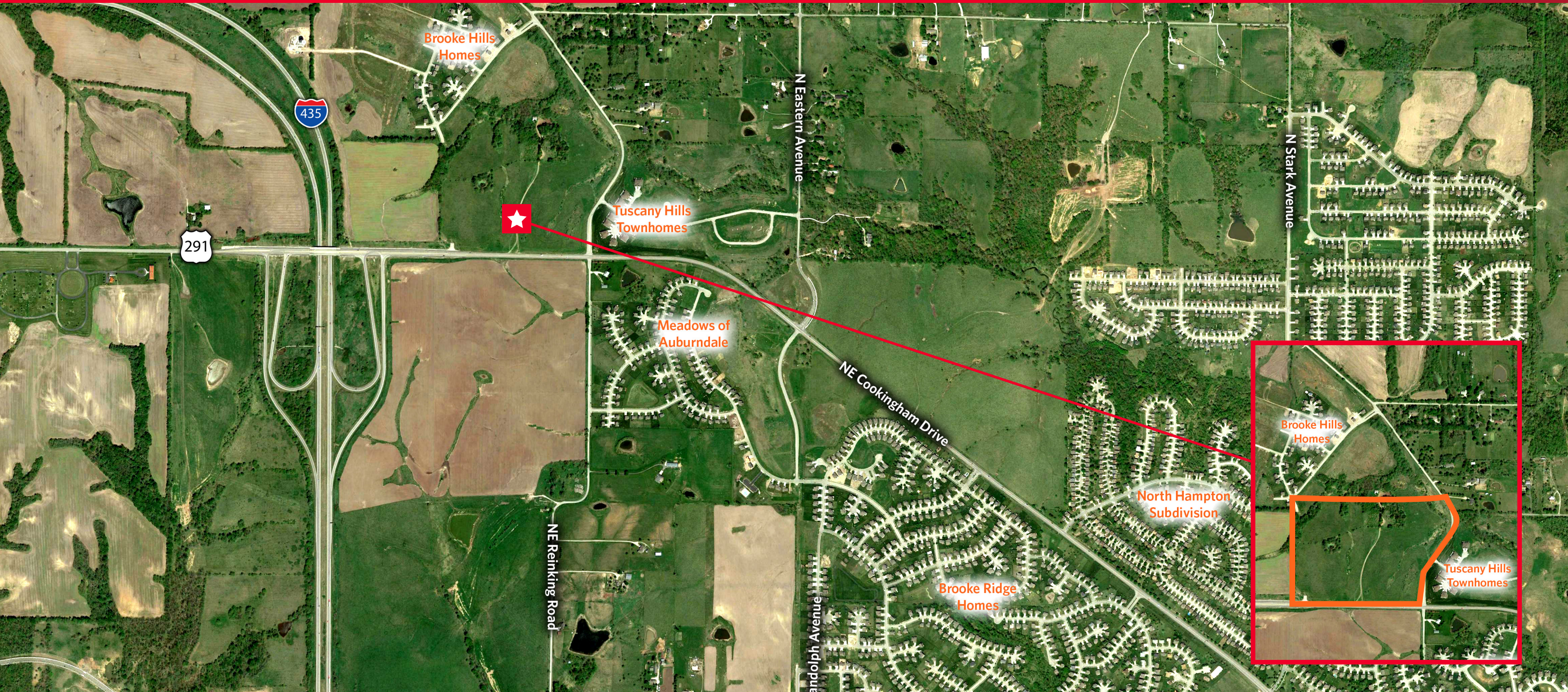
Property Highlights

- Prime commercial development
- 250,000 square feet of approved retail development
- All utilities to site
- Major interchange accessibility



Craig Kelly, SIOR
Director
+1 816 412 0279
craig.kelly@cushwake.com

4600 Madison Avenue, Suite 800
Kansas City, MO 64112
Main +1 816 221 2200
Fax +1 816 842 2798
cushmanwakefield.com



Craig Kelly, SIOR
Director
+1 816 412 0279
craig.kelly@cushwake.com

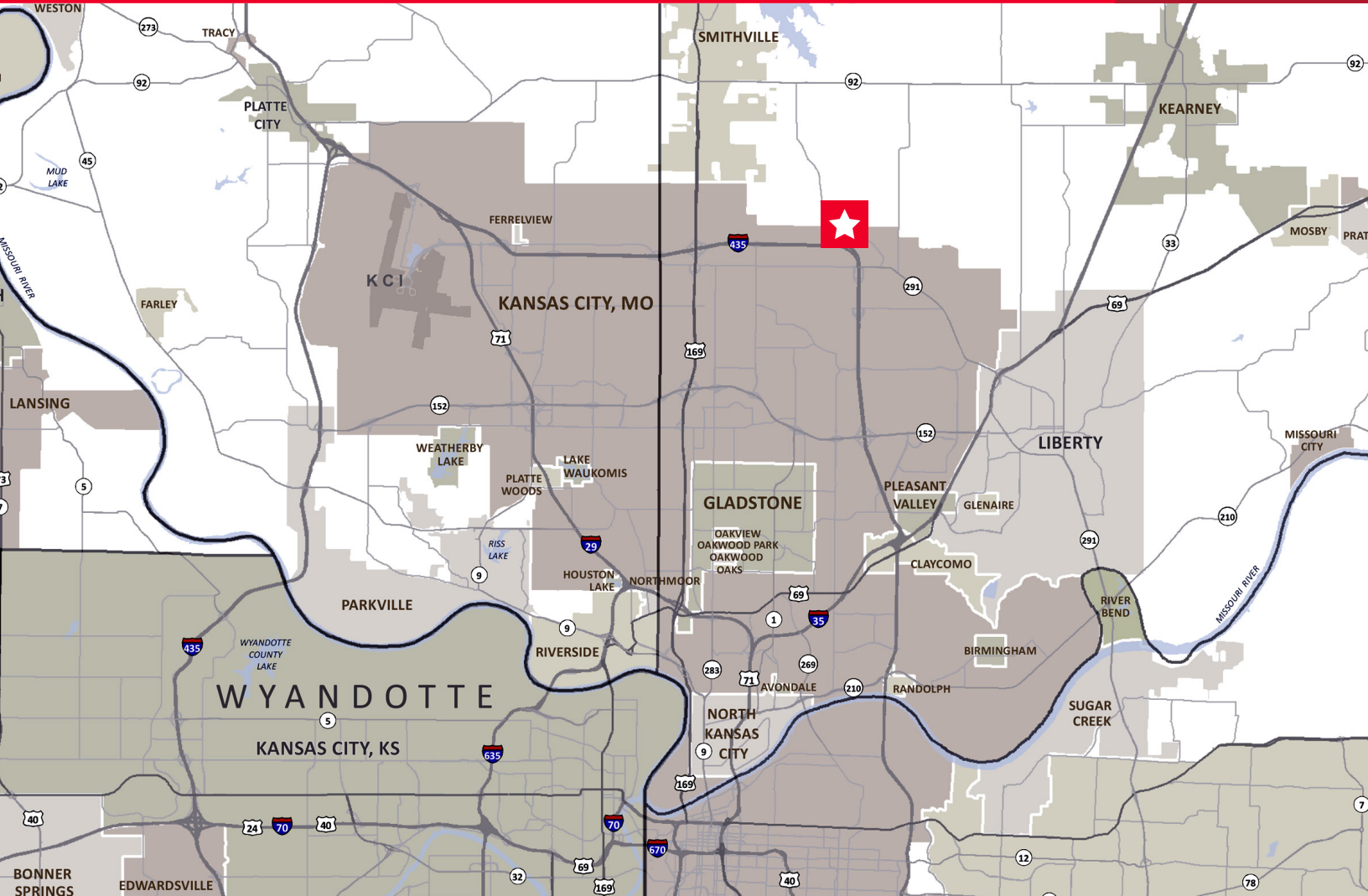
4600 Madison Avenue, Suite 800
Kansas City, MO 64112
Main +1 816 221 2200
Fax +1 816 842 2798
cushmanwakefield.com



FOR SALE

NEC 291 Highway & I-435

Kansas City, MO



Demographics

	1 Mile	3 Miles	5 Miles
Population	753	18,094	57,771
AVG. HH Income	\$100,671	\$109,660	\$104,655

Craig Kelly, SIOR
 Director
 +1 816 412 0279
 craig.kelly@cushwake.com

4600 Madison Avenue, Suite 800
 Kansas City, MO 64112
 Main +1 816 221 2200
 Fax +1 816 842 2798
cushmanwakefield.com

Cushman & Wakefield Copyright 2018. No warranty or representation, express or implied, is made to the accuracy or completeness of the information contained herein, and same is submitted subject to errors, omissions, change of price, rental or other conditions, withdrawal without notice, and to any special listing conditions imposed by the property owner(s). As applicable, we make no representation as to the condition of the property (or properties) in question.